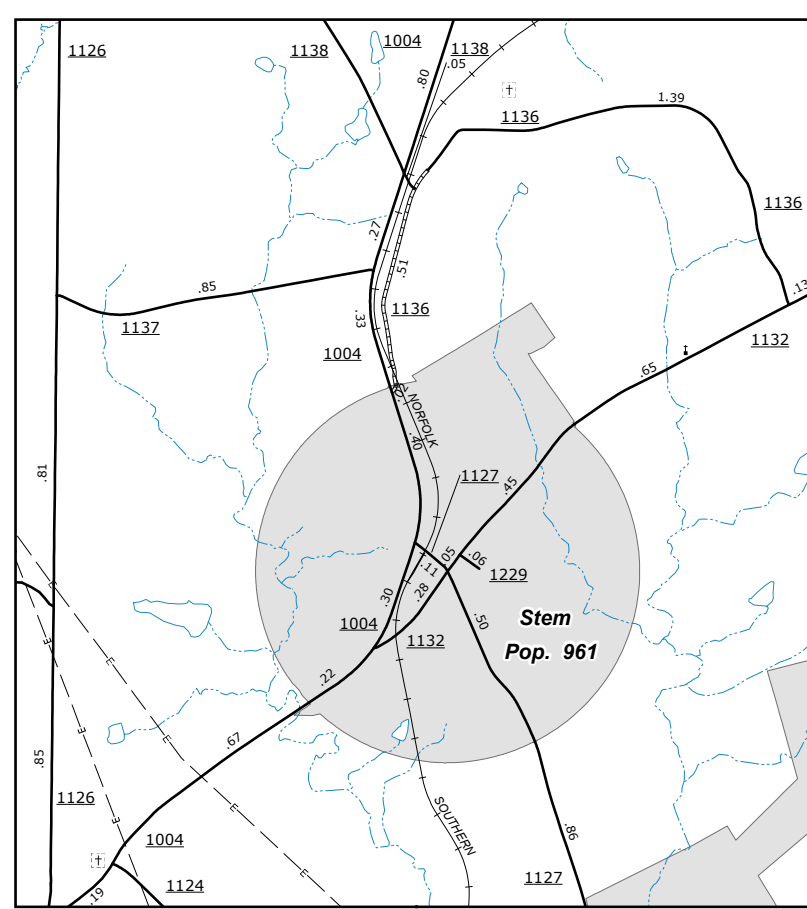
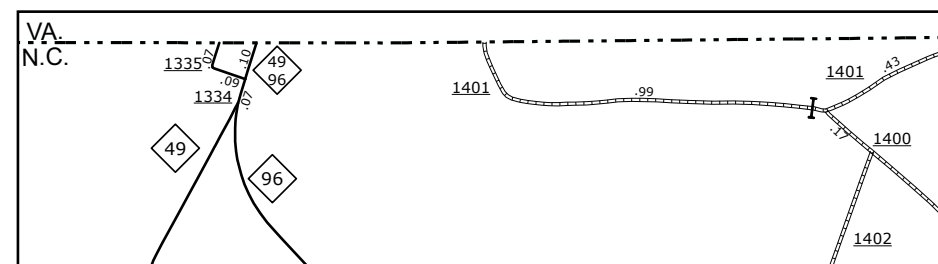


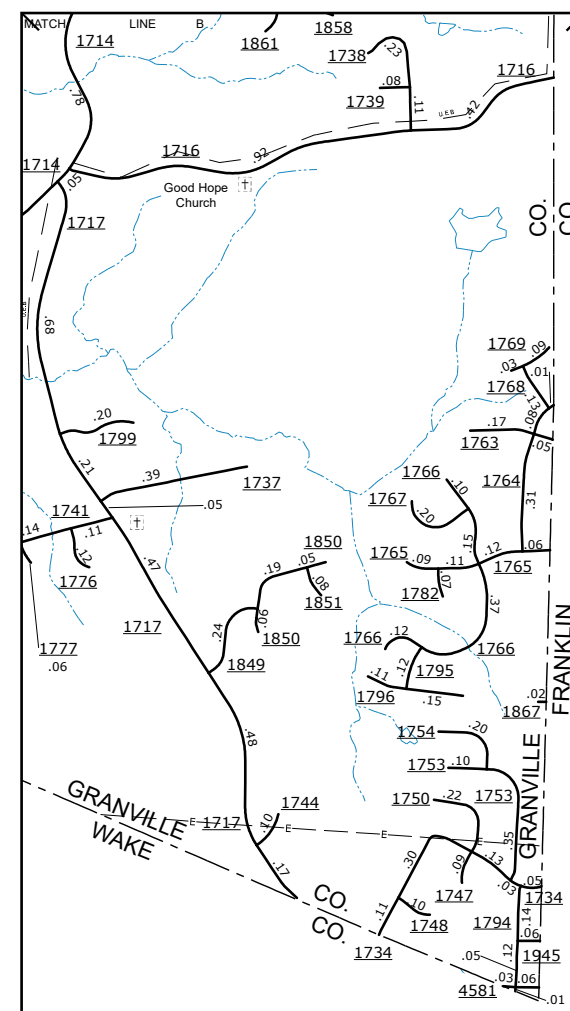
Stovall



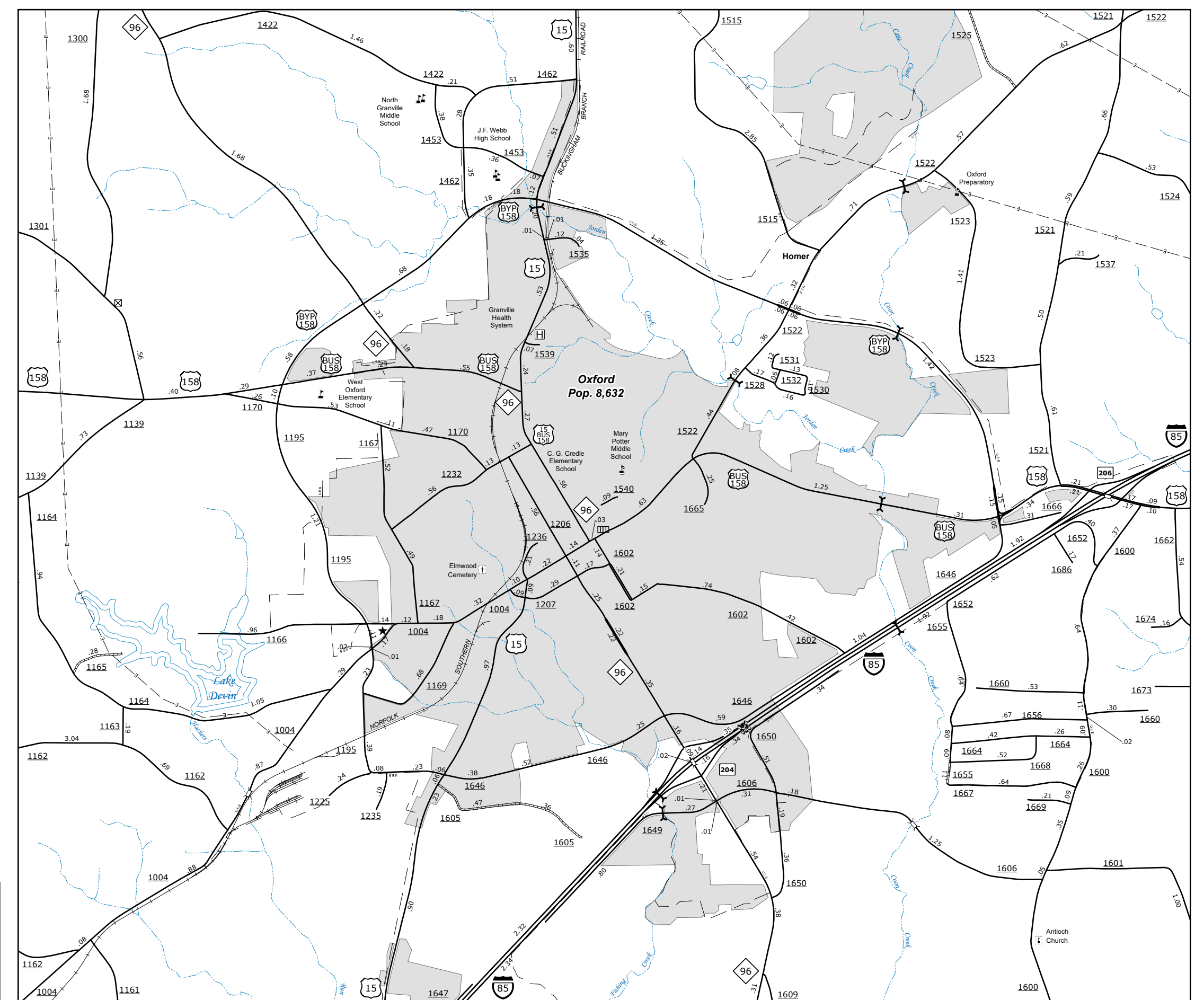
Stem



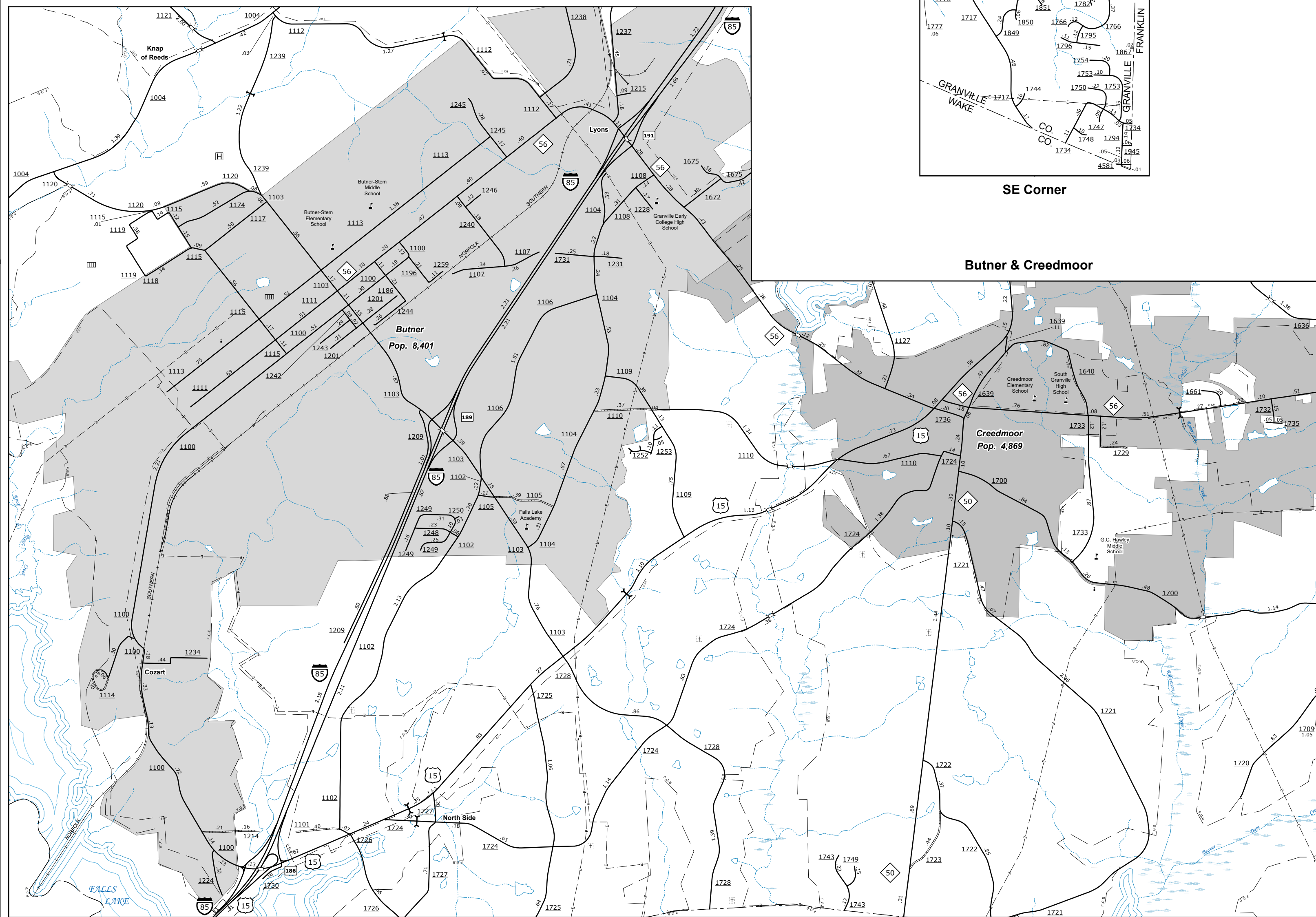
Virginia



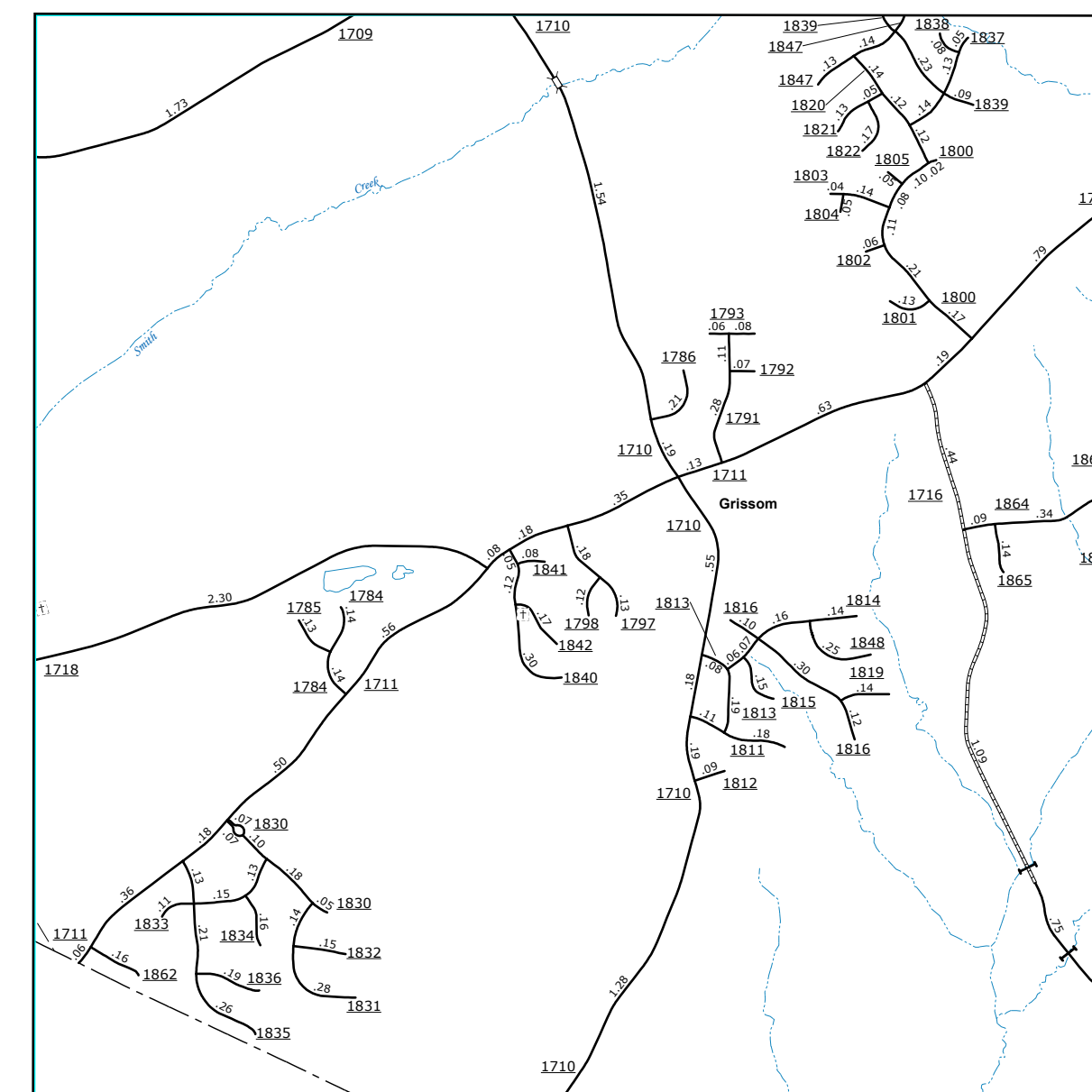
SE Corner



Oxford



Butner & Creedmoor



Grissom

The Mapping Section's goal is to provide the most accurate and current information possible. Map data is compiled from various sources including aerial photography, GIS data, and other public information. The accuracy of the information is not guaranteed. For more information, please visit our website at www.ncdot.gov/transportation/mapping and click on Data Providers or contact us by phone at (919) 855-8480.

COPIES OF THIS MAP ARE AVAILABLE FOR PURCHASE AT A PUBLIC NOMINAL COST. ADDRESS: N.C. DEPARTMENT OF TRANSPORTATION, MSAU - MAPPING SECTION, 4809 BERRY LANE, RALEIGH, NC 27609

ENLARGED MUNICIPAL AND SUBURBAN AREAS
GRANVILLE COUNTY
NORTH CAROLINA
 PREPARED BY THE
 NORTH CAROLINA DEPARTMENT OF TRANSPORTATION
 OPERATIONS PROGRAM MANAGEMENT UNIT - MAPPING SECTION
 IN COOPERATION WITH THE
 U.S. DEPARTMENT OF TRANSPORTATION
 FEDERAL HIGHWAY ADMINISTRATION

SCALE

10,000 FOOT GRID BASED ON NORTH CAROLINA PLANE COORDINATE SYSTEM
LAMBERT CONFORMAL CONIC PROJECTION