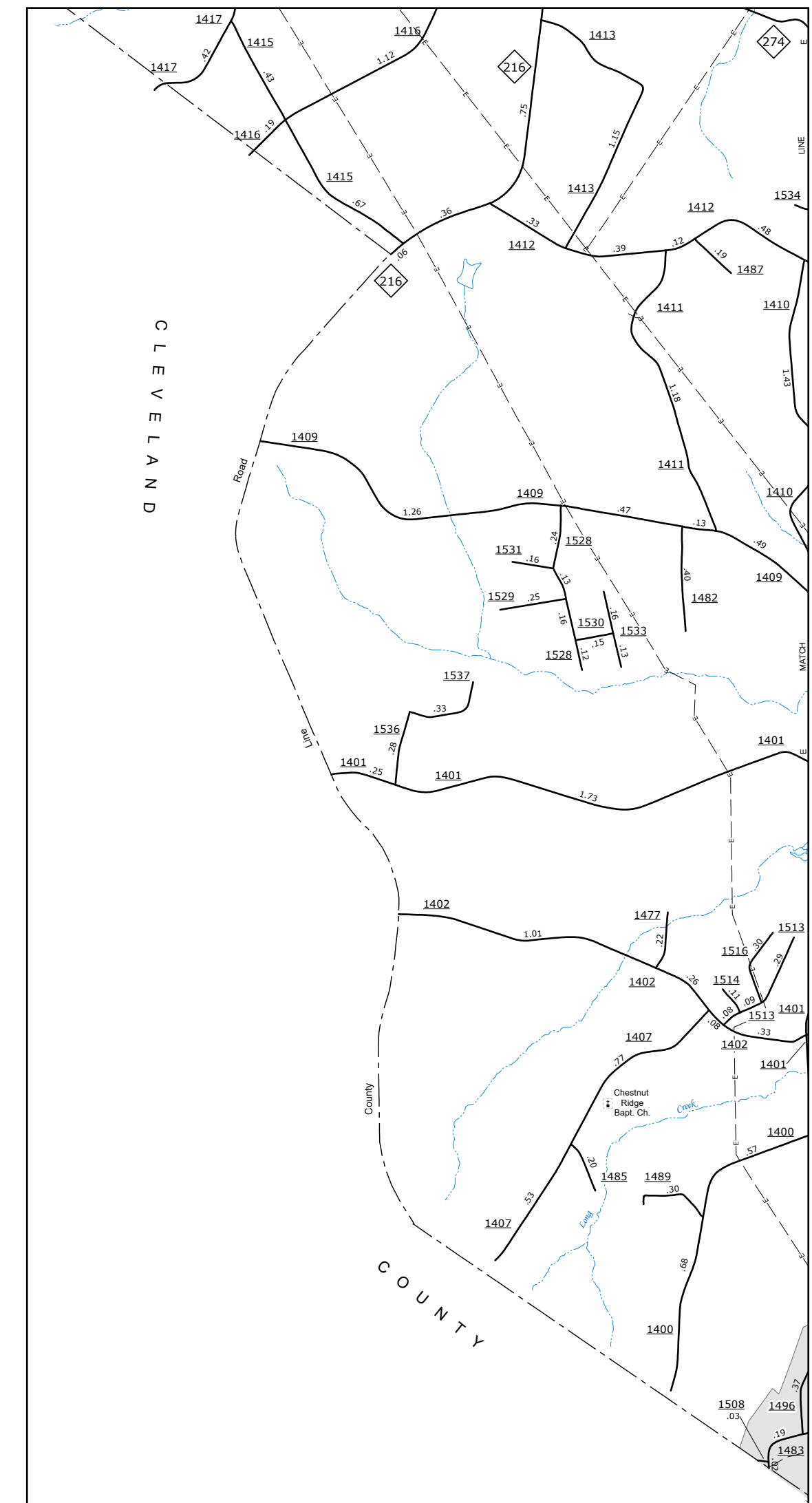




Stanley and Vicinity

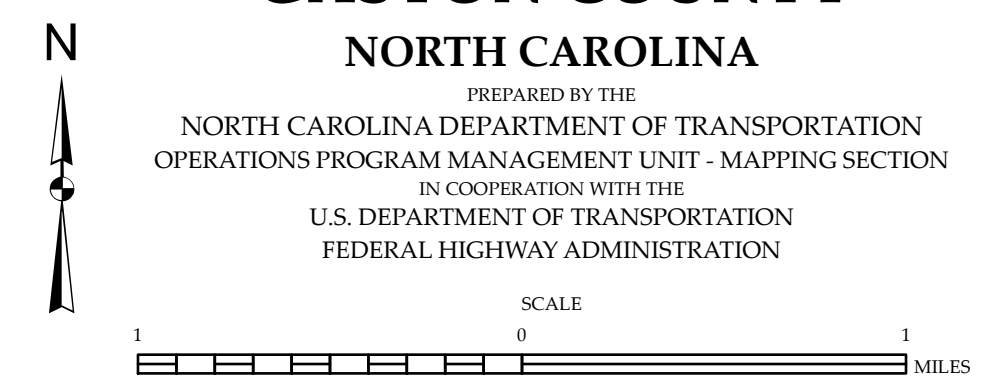


Chestnut Ridge and Vicinity

The Mapping Section's goal is to provide the most accurate and current information possible. Map data is compiled from various sources and is subject to change. The information shown on this map was last updated in July 2022. For additional information, visit <https://www.ncdot.gov/Information/Mapping> and click on Data Providers or contact us by phone at (919) 835-8480.

COPIES OF THIS MAP ARE AVAILABLE FOR PURCHASE AT A NOMINAL COST. ADDRESS: N.C. DEPARTMENT OF TRANSPORTATION, MSAU-MAPPING SECTION, 4801 BERNLI, C.D., CARRBORO, NC 27513

ENLARGED MUNICIPAL AND SUBURBAN AREAS
GASTON COUNTY
NORTH CAROLINA
 PREPARED BY THE
 NORTH CAROLINA DEPARTMENT OF TRANSPORTATION
 OPERATIONS PROGRAM MANAGEMENT UNIT - MAPPING SECTION
 IN COOPERATION WITH THE
 U.S. DEPARTMENT OF TRANSPORTATION
 FEDERAL HIGHWAY ADMINISTRATION



10,000 FOOT GRID BASED ON NORTH CAROLINA PLANE COORDINATE SYSTEM
 LAMBERT CONFORMAL CONIC PROJECTION