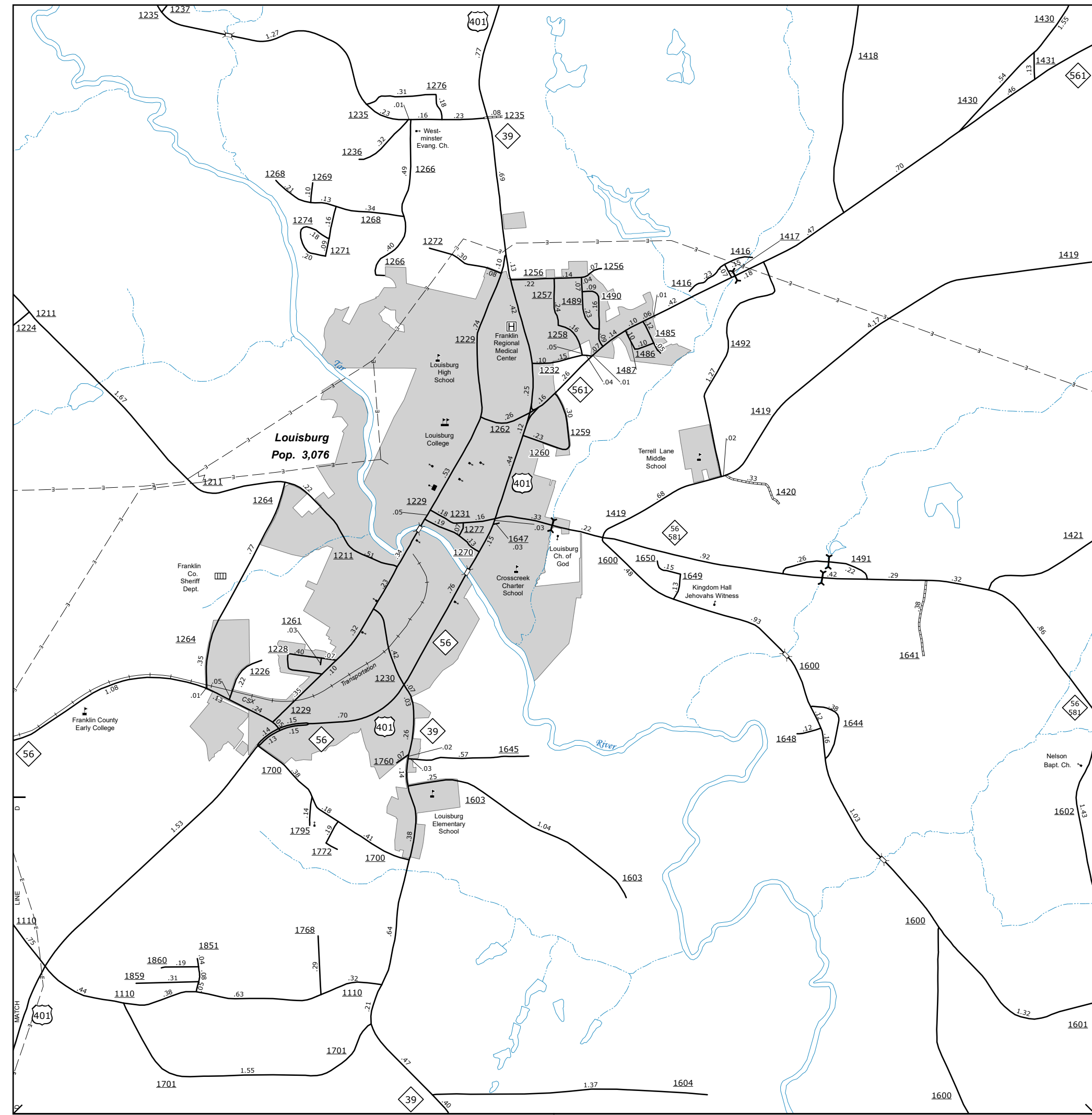
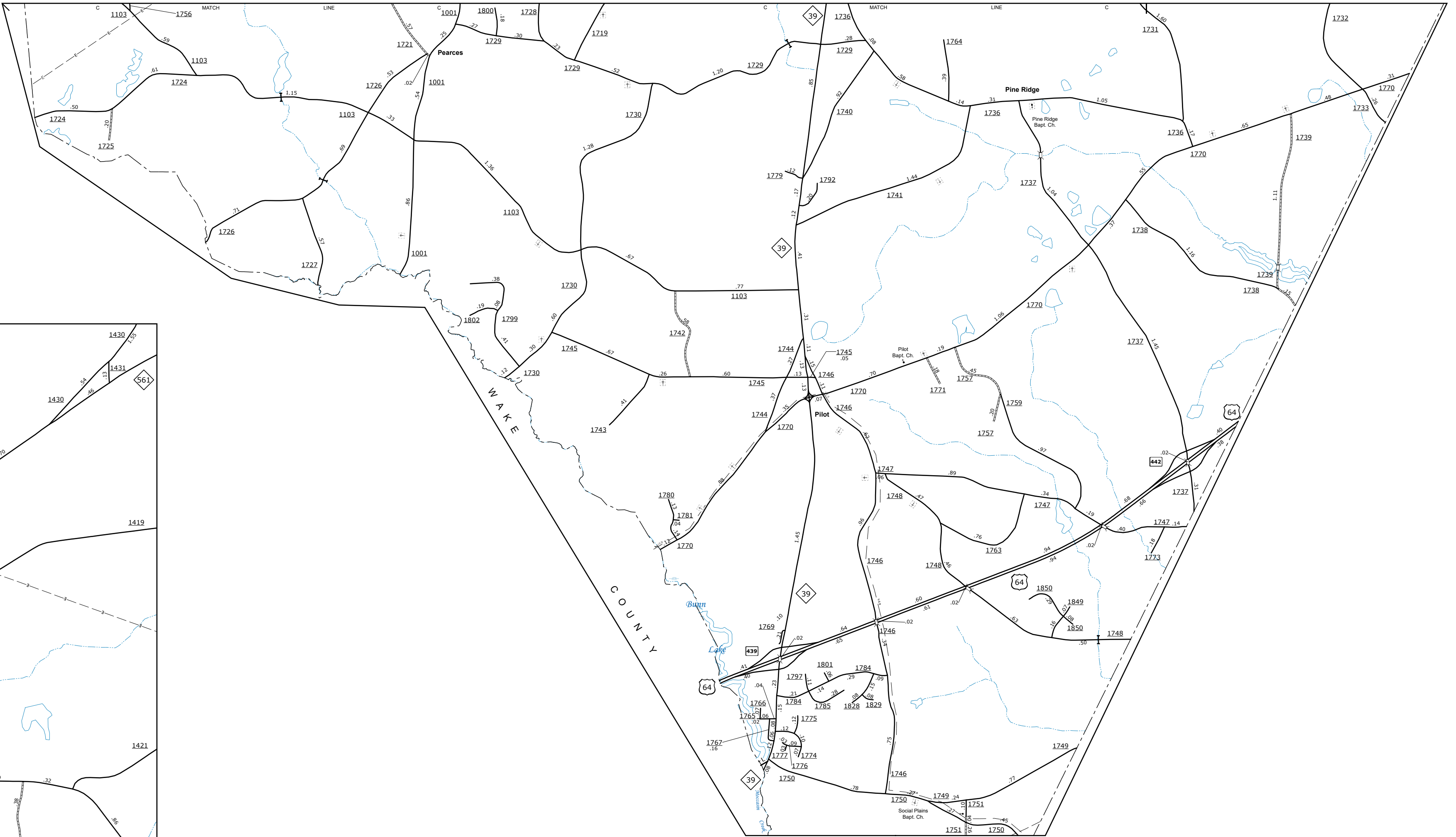


The Mapping Section's goal is to provide the most accurate and current information possible. Map data is compiled from various sources and is subject to change. The accuracy of the data is dependent on the accuracy of the source data. The accuracy of the data is not guaranteed. The accuracy of the data is not guaranteed. The accuracy of the data is not guaranteed.

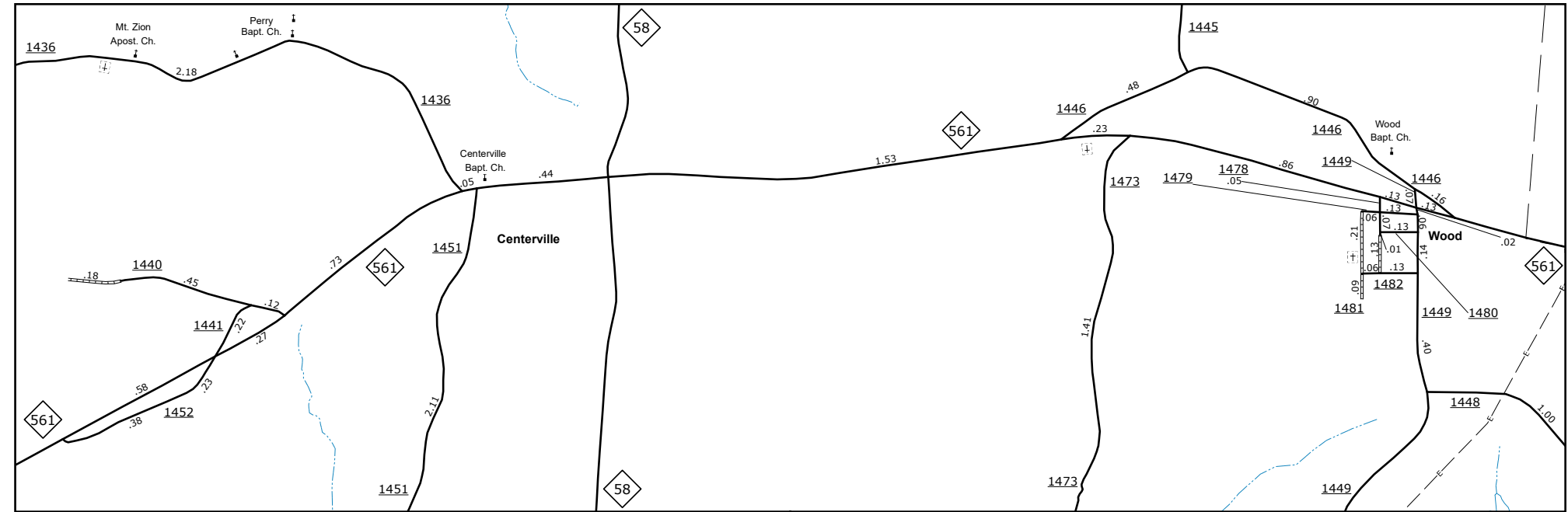
COPIES OF THIS MAP ARE AVAILABLE FROM THE NORTH CAROLINA DEPARTMENT OF TRANSPORTATION, OPERATIONS PROGRAM MANAGEMENT UNIT - MAPPING SECTION, 4809 BERNARD DRIVE, RALEIGH, NC 27606. FOR ADDITIONAL INFORMATION, CONTACT THE MAPPING SECTION AT (919) 855-8480.



Louisburg



Pilot

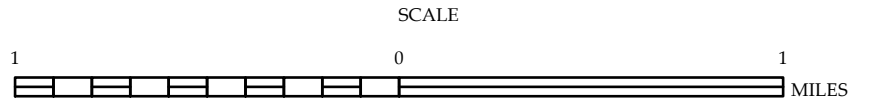


Centerville

N

**ENLARGED MUNICIPAL AND SUBURBAN AREAS**  
**FRANKLIN COUNTY**  
**NORTH CAROLINA**

PREPARED BY THE  
 NORTH CAROLINA DEPARTMENT OF TRANSPORTATION  
 OPERATIONS PROGRAM MANAGEMENT UNIT - MAPPING SECTION  
 IN COOPERATION WITH THE  
 U.S. DEPARTMENT OF TRANSPORTATION  
 FEDERAL HIGHWAY ADMINISTRATION



10,000 FOOT GRID BASED ON NORTH CAROLINA PLANE COORDINATE SYSTEM  
 LAMBERT CONFORMAL CONIC PROJECTION