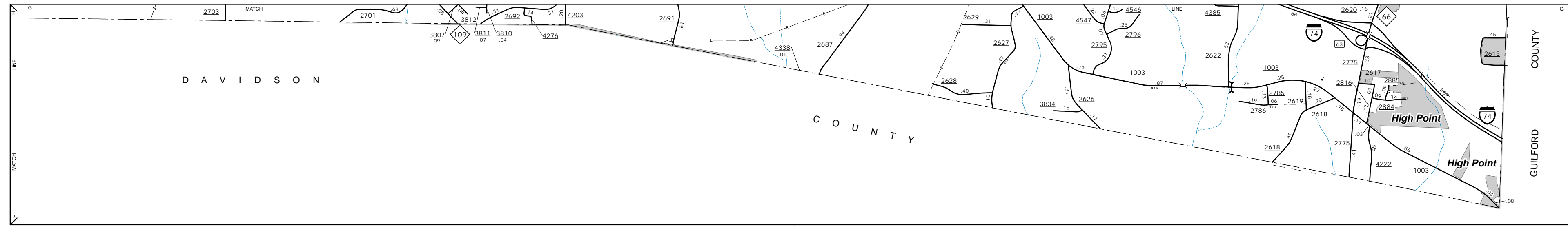


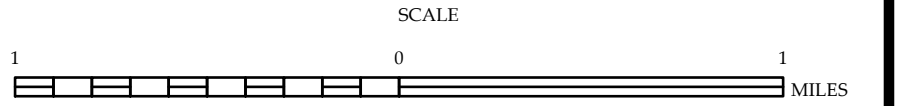
Clemmons



Inset 1



ENLARGED MUNICIPAL AND SUBURBAN AREAS
FORSYTH COUNTY
 NORTH CAROLINA
 PREPARED BY THE
 NORTH CAROLINA DEPARTMENT OF TRANSPORTATION
 OPERATIONS PROGRAM MANAGEMENT UNIT - MAPPING SECTION
 IN COOPERATION WITH THE
 U.S. DEPARTMENT OF TRANSPORTATION
 FEDERAL HIGHWAY ADMINISTRATION



10,000 FOOT GRID BASED ON NORTH CAROLINA PLANE COORDINATE SYSTEM
 LAMBERT CONFORMAL CONIC PROJECTION

SHEET 6 OF 6

The Mapping Section's goal is to provide the most accurate and current information possible. Map data is compiled from various sources, including aerial photography, ground surveys, and other data. The accuracy of the information is dependent on the quality of the data and the methods used to process it. The Mapping Section is not responsible for errors or omissions in this map. For more information, visit our website at <http://www.ncdot.gov/transportation/mapping> or contact us by phone at (919) 855-8480.

COPIES OF THIS MAP ARE AVAILABLE
 AT THE PUBLIC INFORMATION CENTER
 ADDRESS:
 N.C. DEPARTMENT OF TRANSPORTATION
 MSAU - MAPPING SECTION
 4809 BERRY LANE
 RALEIGH, NC 27699