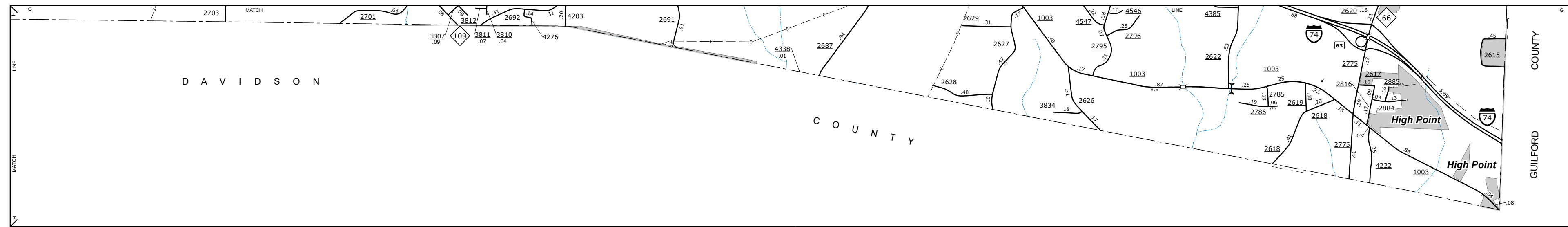


Clemmons



Inset 1



ENLARGED MUNICIPAL AND SUBURBAN AREAS

FORSYTH COUNTY NORTH CAROLINA

PREPARED BY THE
NORTH CAROLINA DEPARTMENT OF TRANSPORTATION
OPERATIONS PROGRAM MANAGEMENT UNIT - MAPPING SECTION
IN COOPERATION WITH THE
U.S. DEPARTMENT OF TRANSPORTATION
FEDERAL HIGHWAY ADMINISTRATION



10,000 FOOT GRID BASED ON NORTH CAROLINA PLANE COORDINATE SYSTEM
LAMBERT CONFORMAL CONIC PROJECTION

SHEET 6 OF 6

The Mapping Section's goal is to provide the most accurate and current information possible. Map data is compiled from various sources and is subject to change. The accuracy of the data is dependent on the accuracy of the data provided to the Mapping Section. The Mapping Section is not responsible for errors or omissions in the data. The Mapping Section is not responsible for any loss or damage resulting from the use of this map. For additional information, visit <http://www.ncdot.gov/levelofservice> and click on Data Providers or contact us by phone at (919) 855-8480.

COPIES OF THIS MAP ARE AVAILABLE
FOR PURCHASE AT A NOMINAL COST.
ADDRESS:
N.C. DEPARTMENT OF TRANSPORTATION
MSAU - MAPPING SECTION
4809 BERNI, LD.
Raleigh, NC 27695