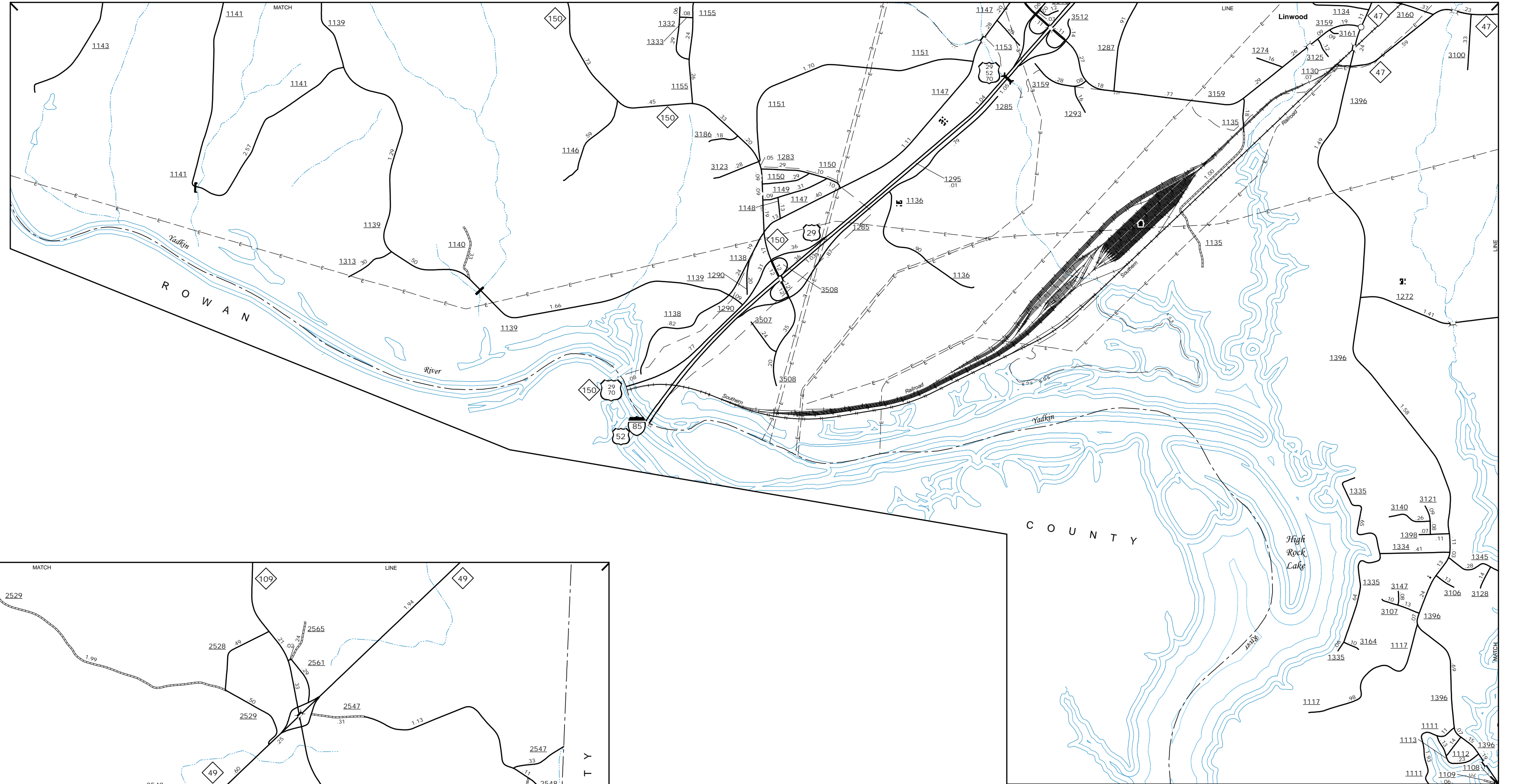
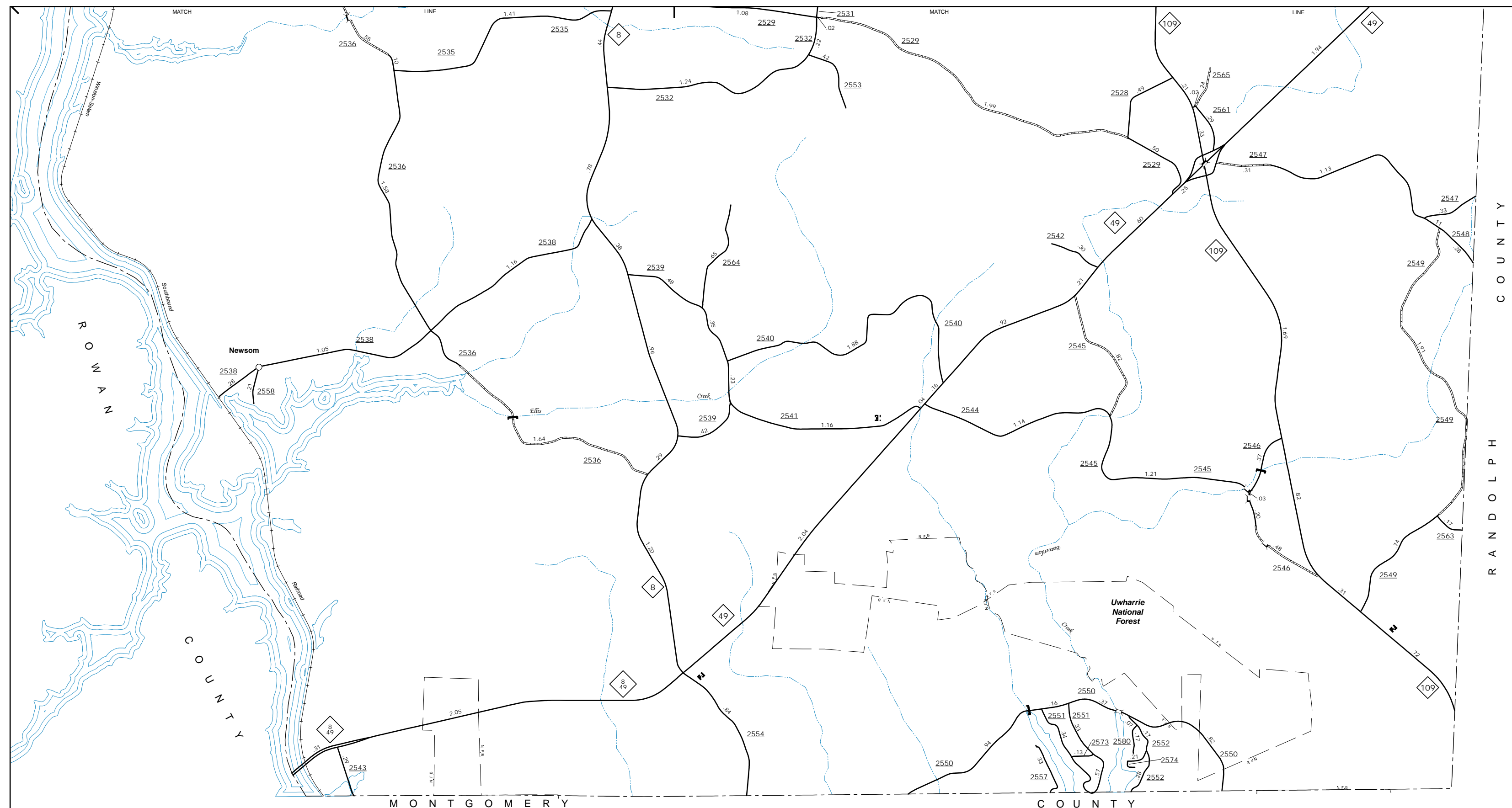


Complex, Handy and Vicinity



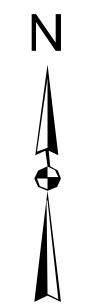
Linwood and Vicinity



Newsom and Vicinity

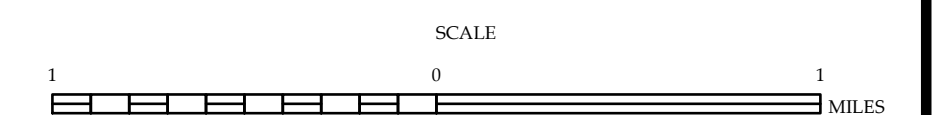
The Mapping Section's goal is to provide the most accurate and current information possible. Map data is compiled from various sources and is subject to change. The Mapping Section does not warrant the accuracy, completeness, or timeliness of the data or information provided. For additional information, visit <http://www.ncdot.gov/transportation/mau/mapping/mau.asp> and click on Data Problems or contact us by phone at (919) 835-8480.

COPIES OF THIS MAP ARE AVAILABLE
 AT A PUBLIC AT NOMINAL COST
 ADDRESS: N.C. DEPARTMENT OF TRANSPORTATION
 MAU - MAPPING SECTION
 4609 BERNLIND
 RALEIGH, NC 27606



ENLARGED MUNICIPAL AND SUBURBAN AREAS
DAVIDSON COUNTY
 NORTH CAROLINA

PREPARED BY THE
 NORTH CAROLINA DEPARTMENT OF TRANSPORTATION
 MANAGEMENT SYSTEMS AND ASSESSMENTS UNIT - MAPPING SECTION
 IN COOPERATION WITH THE
 U.S. DEPARTMENT OF TRANSPORTATION
 FEDERAL HIGHWAY ADMINISTRATION



10,000 FOOT GRID BASED ON NORTH CAROLINA PLANE COORDINATE SYSTEM
 LAMBERT CONFORMAL CONIC PROJECTION