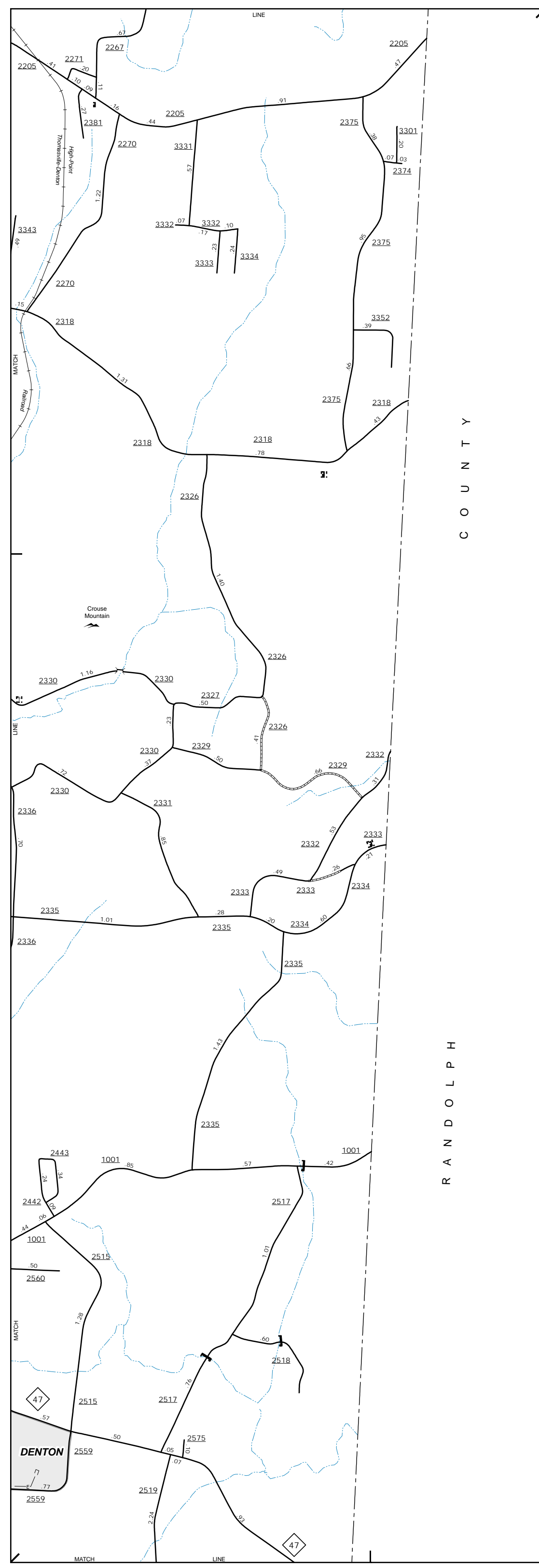


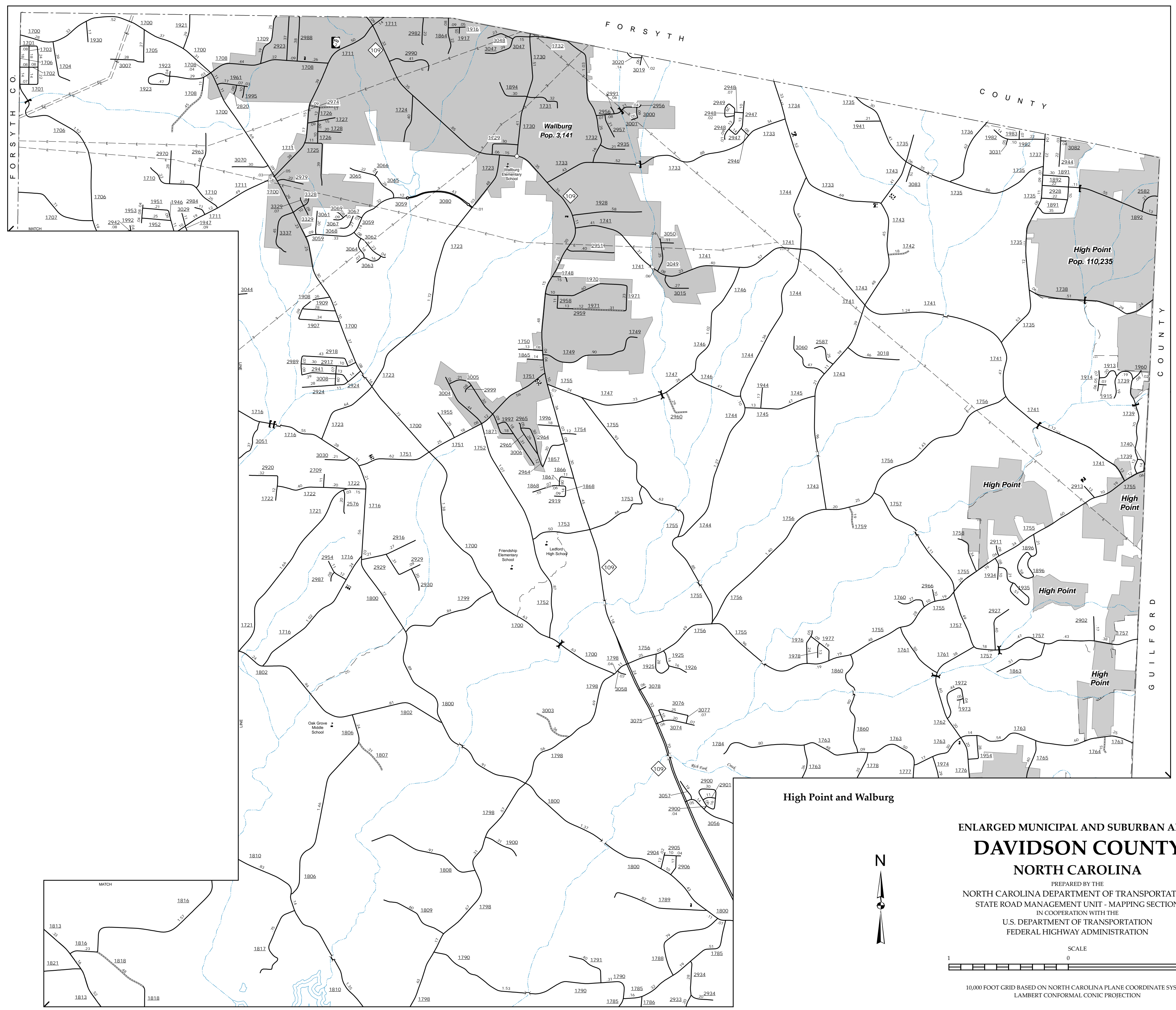
The Mapping Section's goal is to provide the most accurate and current information possible. Map data is compiled from various sources and is subject to change. It is the user's responsibility to verify the accuracy of the information shown on this map. For additional information, visit <http://www.ncdot.gov/transportation/sra/mapping/section> and click on Data Problems or contact us by phone at (919) 835-8480.

COPIES OF THIS MAP ARE AVAILABLE FOR PURCHASE AT A PUBLIC UTILITY NOMINAL COST. ADDRESS: N.C. DEPARTMENT OF TRANSPORTATION, STATE ROAD MAPPING SECTION, 4809 BERNLIE RD., RALEIGH, NC 27606



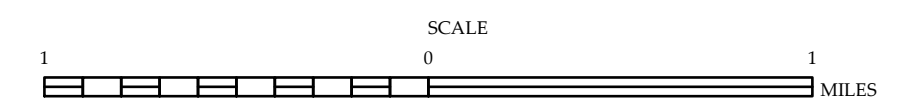
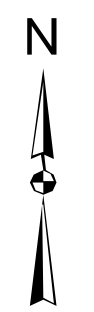
R A N D O L P H
C O U N T Y

Crouse Mountain



High Point and Walburg

ENLARGED MUNICIPAL AND SUBURBAN AREAS
DAVIDSON COUNTY
NORTH CAROLINA
PREPARED BY THE
NORTH CAROLINA DEPARTMENT OF TRANSPORTATION
STATE ROAD MANAGEMENT UNIT - MAPPING SECTION
IN COOPERATION WITH THE
U.S. DEPARTMENT OF TRANSPORTATION
FEDERAL HIGHWAY ADMINISTRATION



10,000 FOOT GRID BASED ON NORTH CAROLINA PLANE COORDINATE SYSTEM
LAMBERT CONFORMAL CONIC PROJECTION