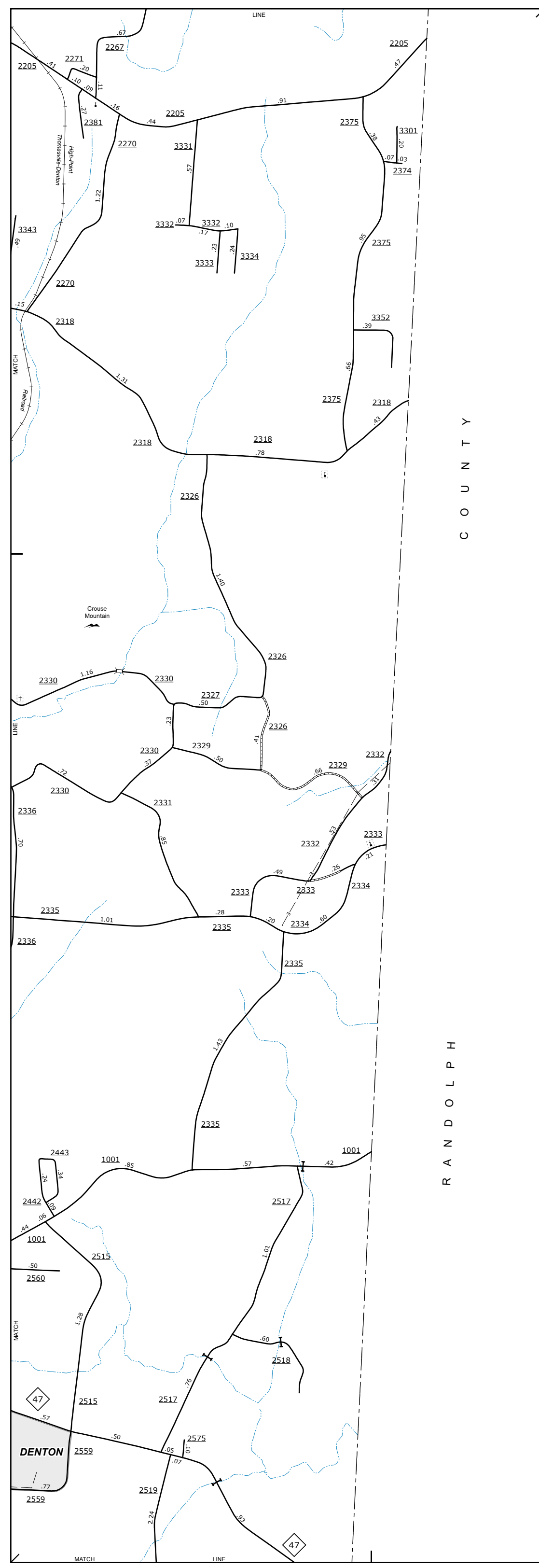


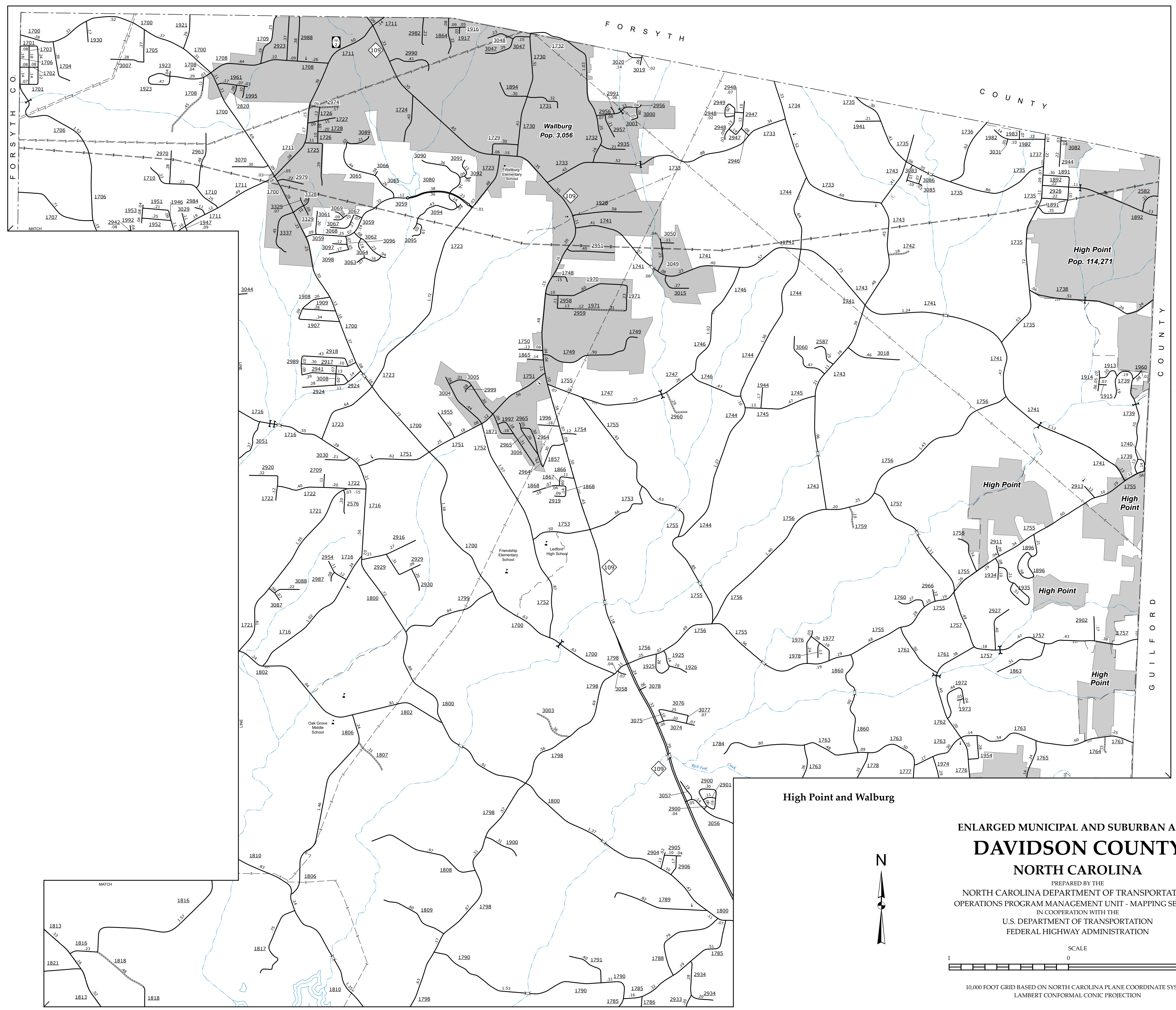
The Mapping Section's goal is to provide the most accurate and current information possible. Map data is compiled from various sources and is not a guarantee of accuracy. The accuracy of the data is dependent on the accuracy of the data provided to the Mapping Section. The Mapping Section is not responsible for errors or omissions in the data. For additional information, visit <http://www.ncdot.gov/levelofservice> and click on Data Providers or contact us by phone at (919) 855-8480.

COPIES OF THIS MAP ARE AVAILABLE TO THE PUBLIC AT NOMINAL COST. ADDRESS: N.C. DEPARTMENT OF TRANSPORTATION, SR40 - MAPPING SECTION, 4809 BERNAL RD., RALEIGH, NC 27609



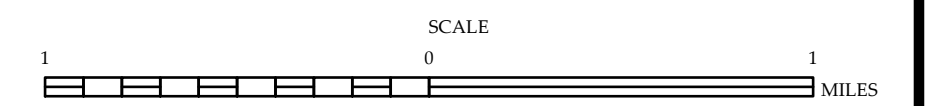
R A N D O L P H C O U N T Y

Crouse Mountain



High Point and Walburg

ENLARGED MUNICIPAL AND SUBURBAN AREAS
DAVIDSON COUNTY
 NORTH CAROLINA
 PREPARED BY THE
 NORTH CAROLINA DEPARTMENT OF TRANSPORTATION
 OPERATIONS PROGRAM MANAGEMENT UNIT - MAPPING SECTION
 IN COOPERATION WITH THE
 U.S. DEPARTMENT OF TRANSPORTATION
 FEDERAL HIGHWAY ADMINISTRATION



10,000 FOOT GRID BASED ON NORTH CAROLINA PLANE COORDINATE SYSTEM
 LAMBERT CONFORMAL CONIC PROJECTION