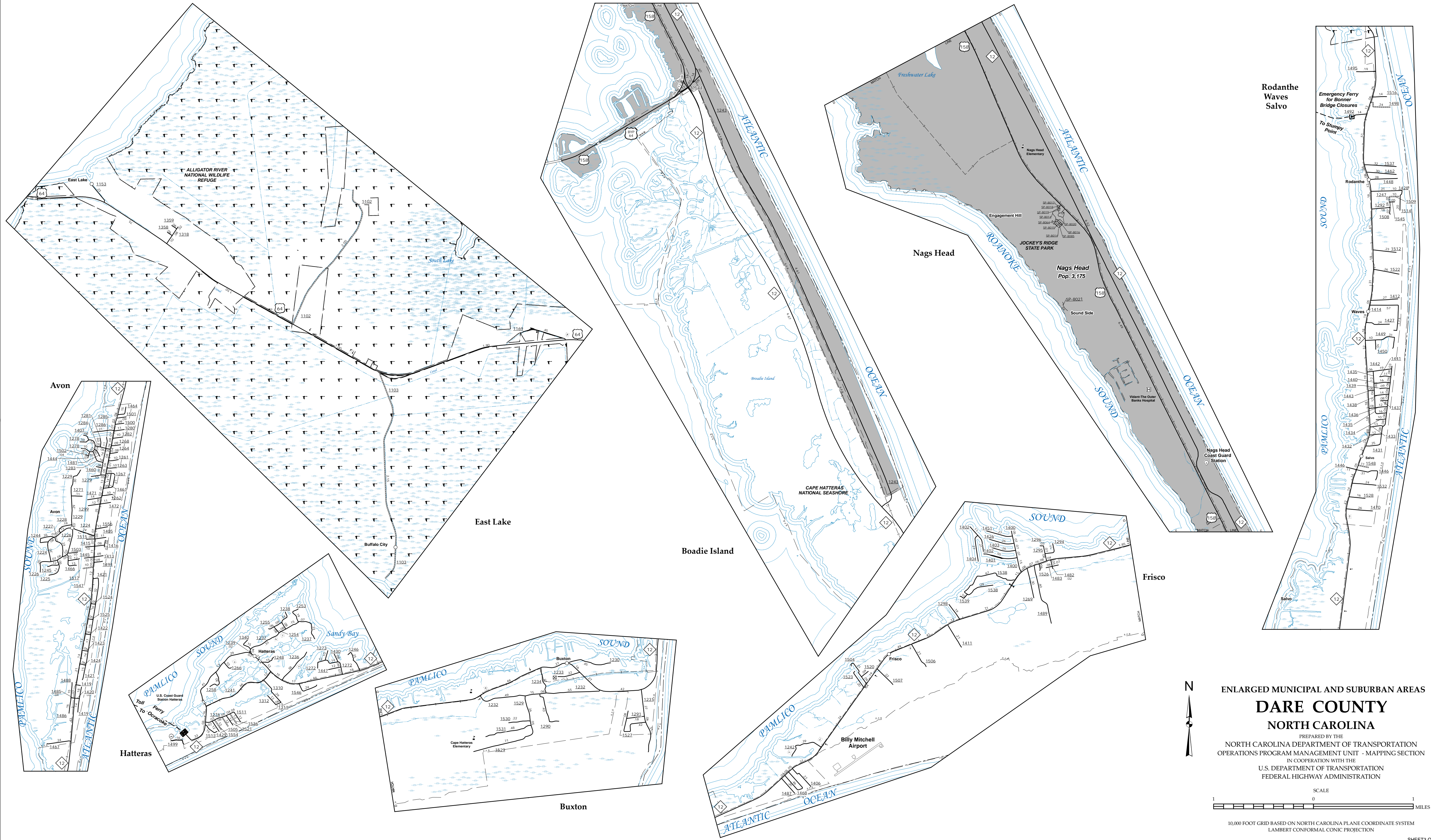


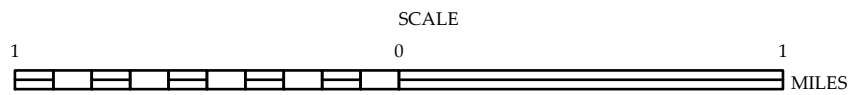
The Mapping Section's goal is to provide the most accurate and current information possible. Map data is compiled from numerous sources with varying degrees of precision and accuracy. As a result, the accuracy of the information shown on this map may vary. The map includes information that is not a part of the official non-system roads. The information shown on this map was last updated in June 2022. For additional information, visit <http://www.dcd.state.nc.gov/transportation/mapping> and click on Data Providers or contact us by phone at (919) 856-9480.

COPIES OF THIS MAP ARE AVAILABLE  
FOR PURCHASE AT A NOMINAL COST.  
ADDRESS:  
N.C. DEPARTMENT OF TRANSPORTATION  
SKALA - MAPPING SECTION  
4809 BERT RD  
RALEIGH, NC 27608



ENLARGED MUNICIPAL AND SUBURBAN AREAS  
**DARE COUNTY**  
**NORTH CAROLINA**

PREPARED BY THE  
NORTH CAROLINA DEPARTMENT OF TRANSPORTATION  
OPERATIONS PROGRAM MANAGEMENT UNIT - MAPPING SECTION  
IN COOPERATION WITH THE  
U.S. DEPARTMENT OF TRANSPORTATION  
FEDERAL HIGHWAY ADMINISTRATION



10,000 FOOT GRID BASED ON NORTH CAROLINA PLANE COORDINATE SYSTEM  
LAMBERT CONFORMAL CONIC PROJECTION