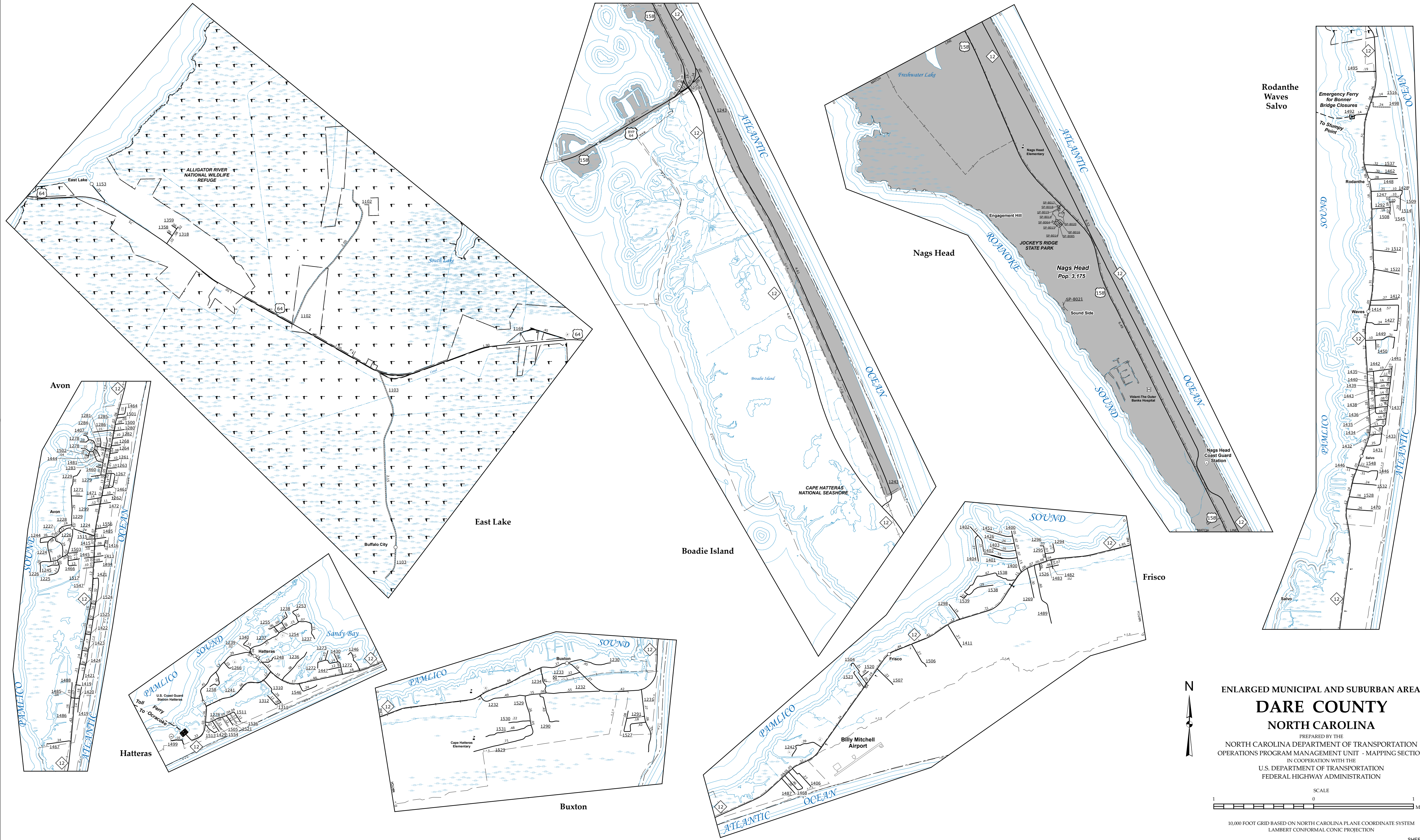


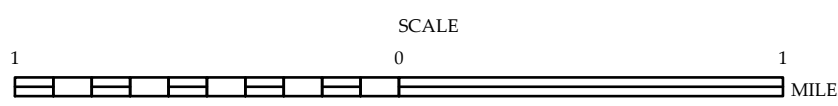
The Mapping Section's goal is to provide the most accurate and current information possible. Map data is compiled from numerous sources with varying degrees of detail and accuracy. As a result, the accuracy of the information shown on this map is not guaranteed. The map includes information that is not important non-system roads.

The information shown on this map was last updated in June 2022. For additional information, visit <http://www.dotd.gov/travel/infomaps> and click on Data Providers or contact us by phone at (919) 855-9480.

COPIES OF THIS MAP ARE AVAILABLE
FOR PURCHASE AT A PUBLIC AT NOMINAL COST.
ADDRESS: N.C. DEPARTMENT OF TRANSPORTATION
MAILING ADDRESS: N.C. DEPARTMENT OF TRANSPORTATION
4809 BERT RD
RALEIGH, NC 27609



ENLARGED MUNICIPAL AND SUBURBAN AREAS
DARE COUNTY
NORTH CAROLINA
PREPARED BY THE
NORTH CAROLINA DEPARTMENT OF TRANSPORTATION
OPERATIONS PROGRAM MANAGEMENT UNIT - MAPPING SECTION
IN COOPERATION WITH THE
U.S. DEPARTMENT OF TRANSPORTATION
FEDERAL HIGHWAY ADMINISTRATION



10,000 FOOT GRID BASED ON NORTH CAROLINA PLANE COORDINATE SYSTEM
LAMBERT CONFORMAL CONIC PROJECTION