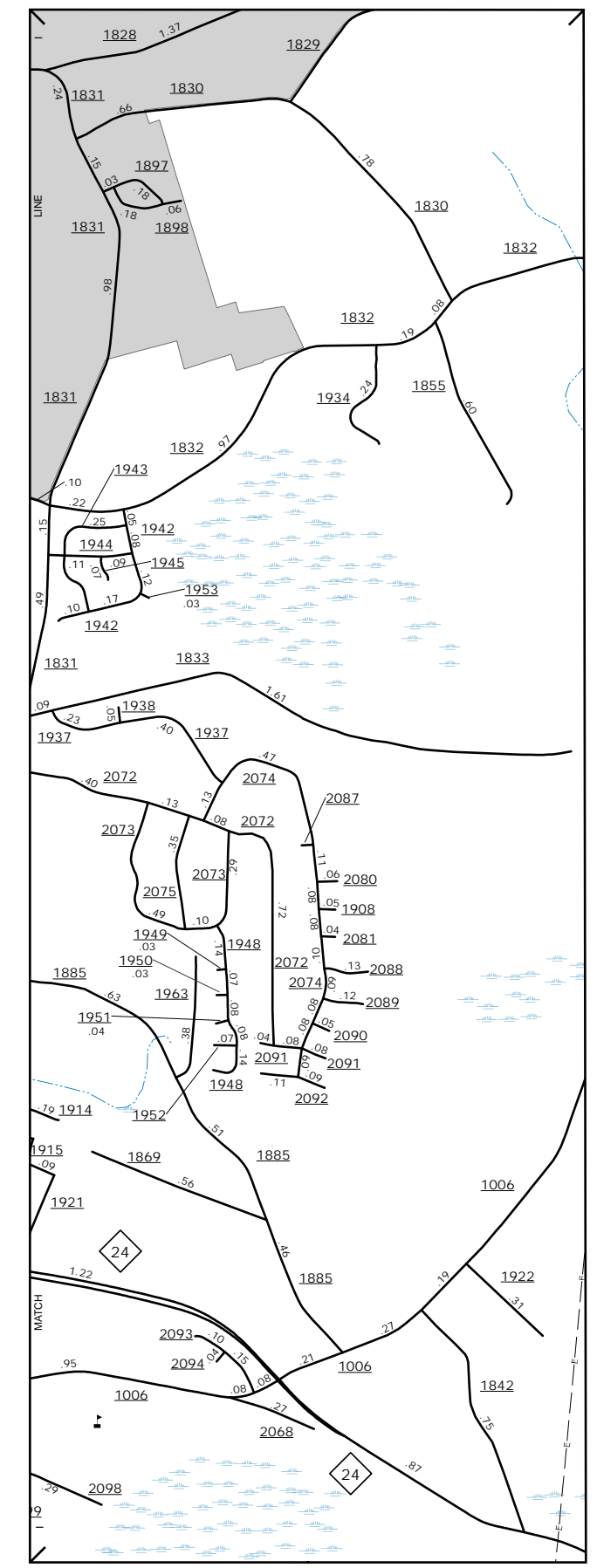
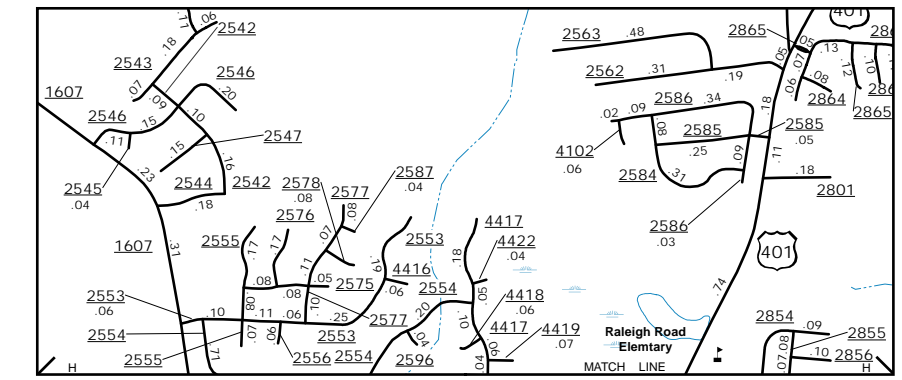


The Mapping Section's goal is to provide the most accurate and current information possible. Map data is compiled from numerous sources including aerial photography, ground surveys, and other data. While every effort is made to ensure accuracy, the user should be aware that the information is not guaranteed. For additional information, visit <http://www.ncdot.gov/transportation/mapping> and click on Data Providers or contact us by phone at (919) 855-8480.

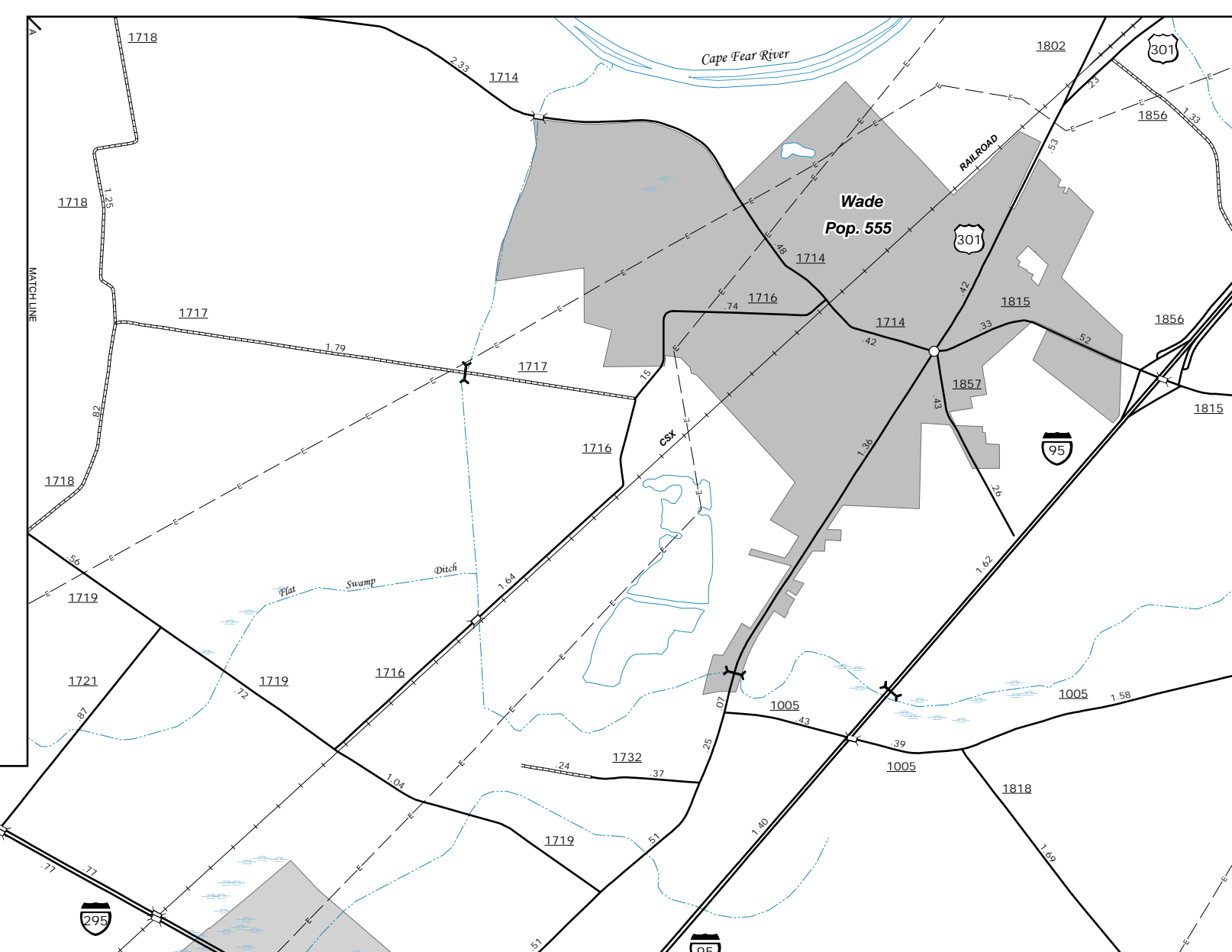
COPIES OF THIS MAP ARE AVAILABLE
 FROM THE
 N.C. DEPARTMENT OF TRANSPORTATION
 ADDRESS: MSAU-MAPPING SECTION
 4809 BERNAL RD.
 RALEIGH, NC 27606



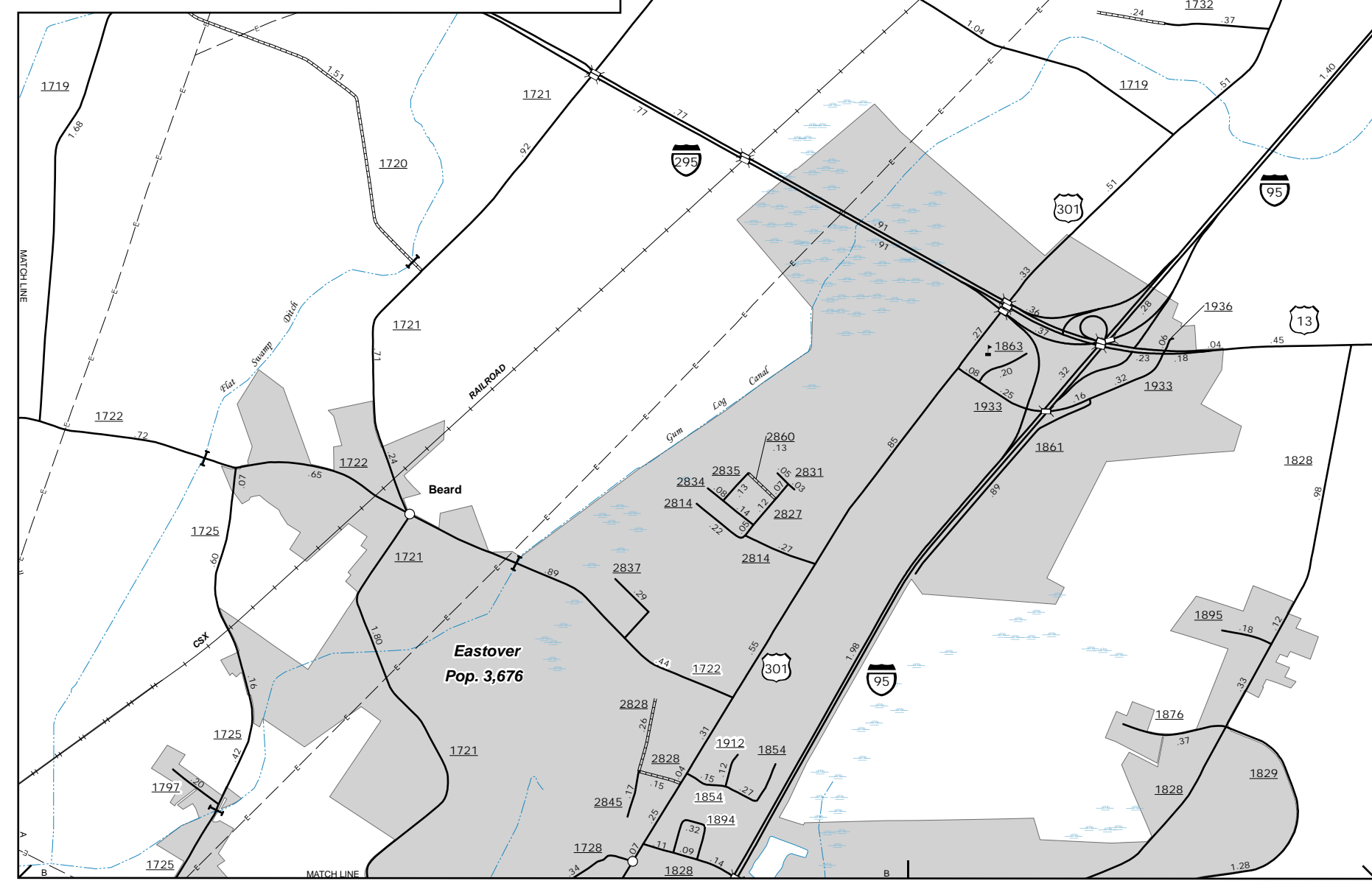
East Fayetteville



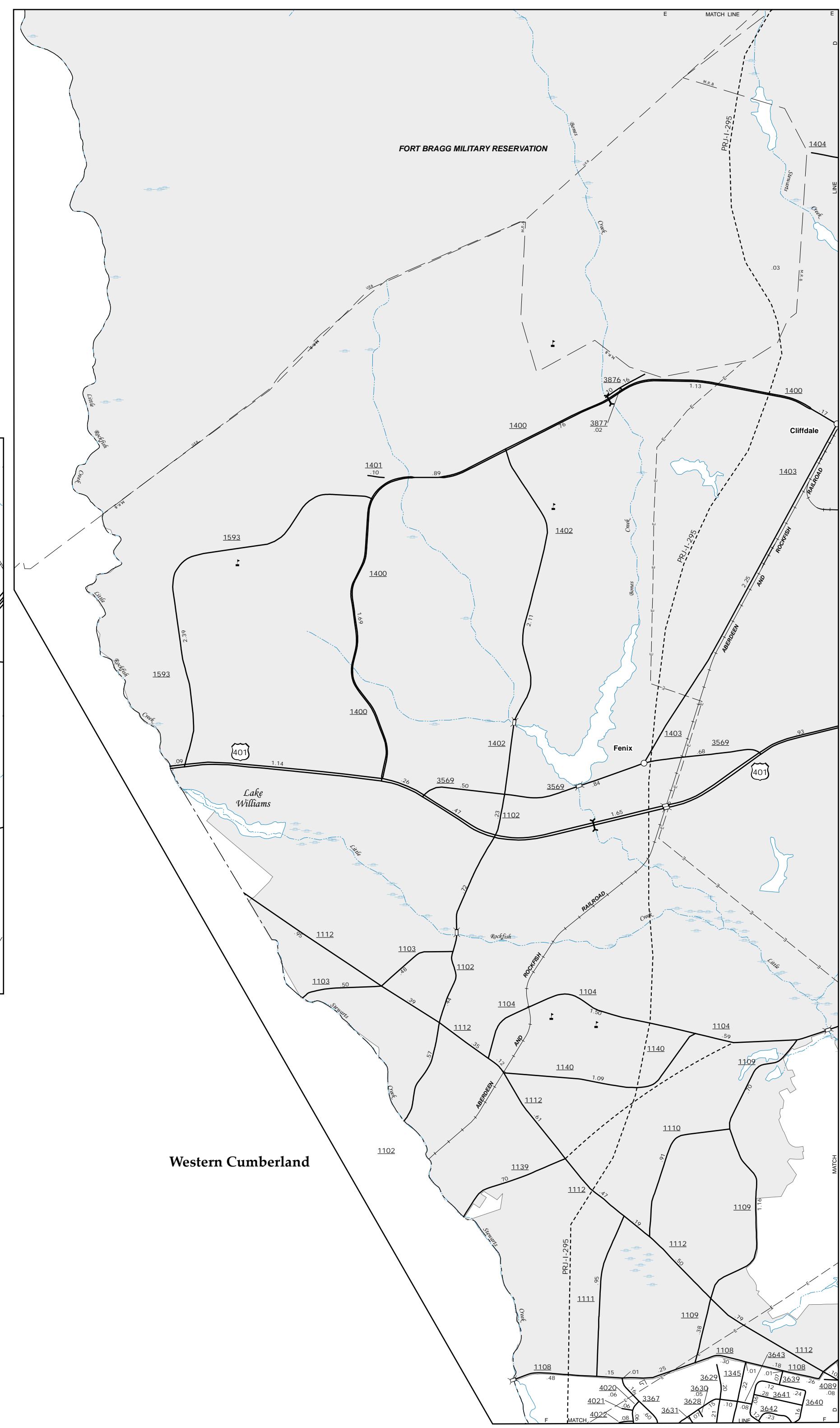
Inset 2



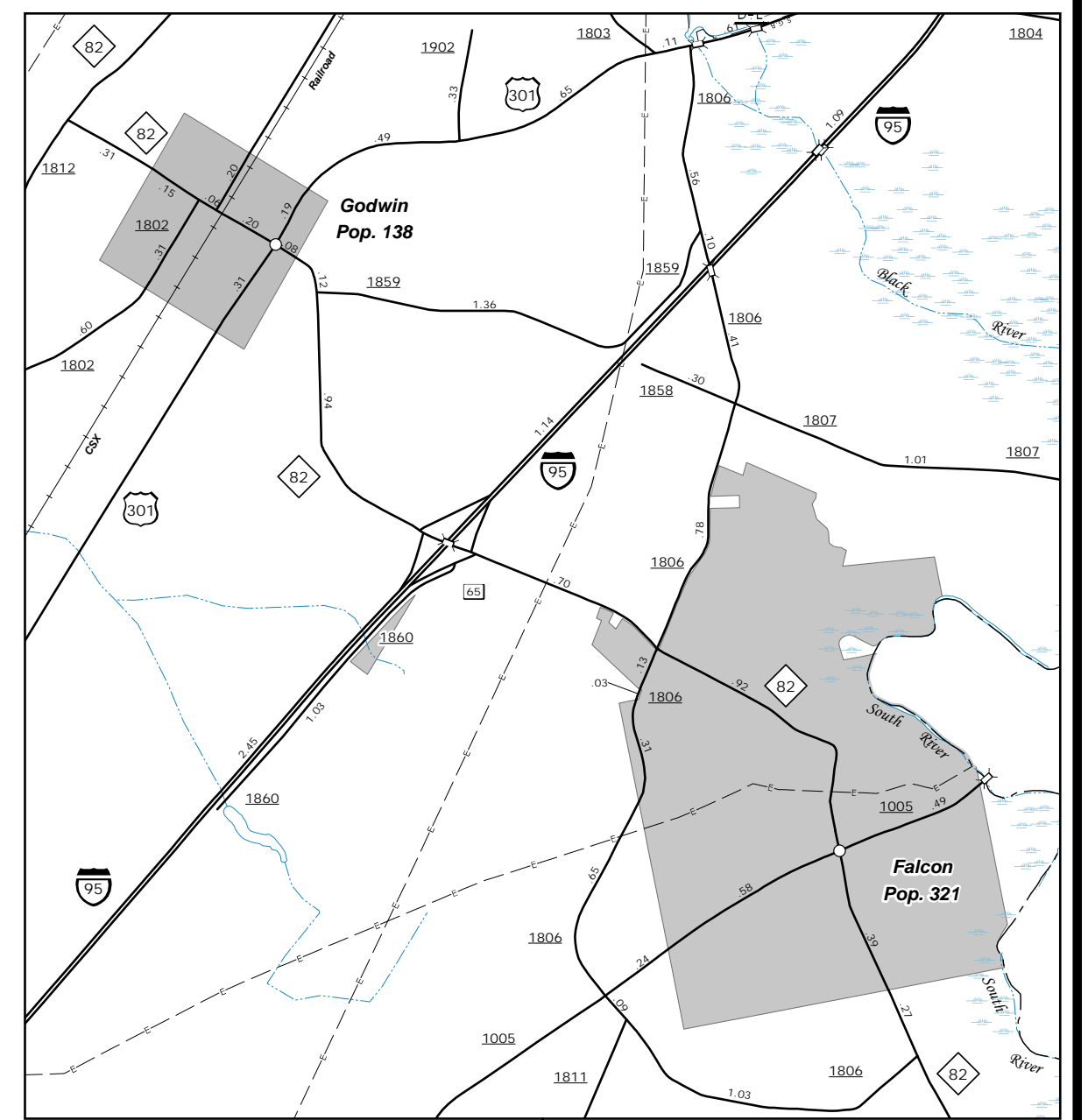
Wade



**Eastover
 Pop. 3,676**

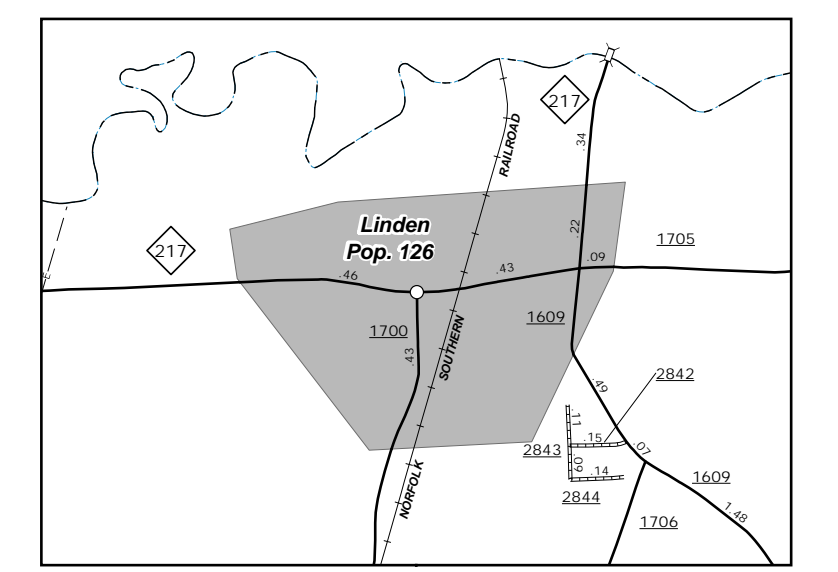


Western Cumberland



**Godwin
 Pop. 138**

**Falcon
 Pop. 321**

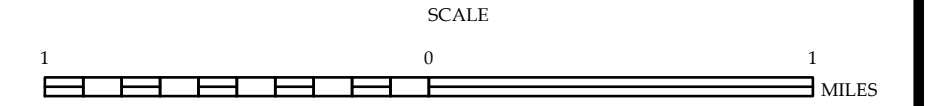


**Linden
 Pop. 126**



**ENLARGED MUNICIPAL AND SUBURBAN AREAS
 CUMBERLAND COUNTY
 NORTH CAROLINA**

PREPARED BY THE
 NORTH CAROLINA DEPARTMENT OF TRANSPORTATION
 MANAGEMENT SYSTEMS AND ASSESSMENTS UNIT - MAPPING SECTION
 IN COOPERATION WITH THE
 U.S. DEPARTMENT OF TRANSPORTATION
 FEDERAL HIGHWAY ADMINISTRATION



10,000 FOOT GRID BASED ON NORTH CAROLINA PLANE COORDINATE SYSTEM
 LAMBERT CONFORMAL CONIC PROJECTION