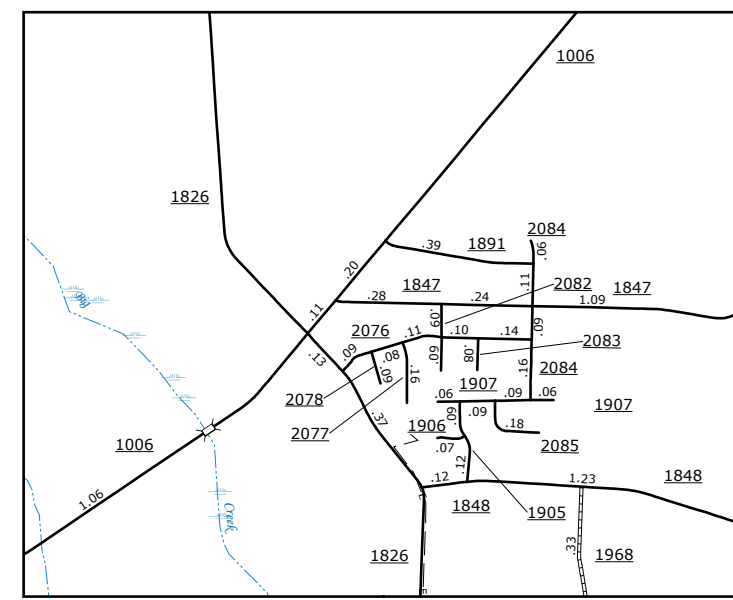
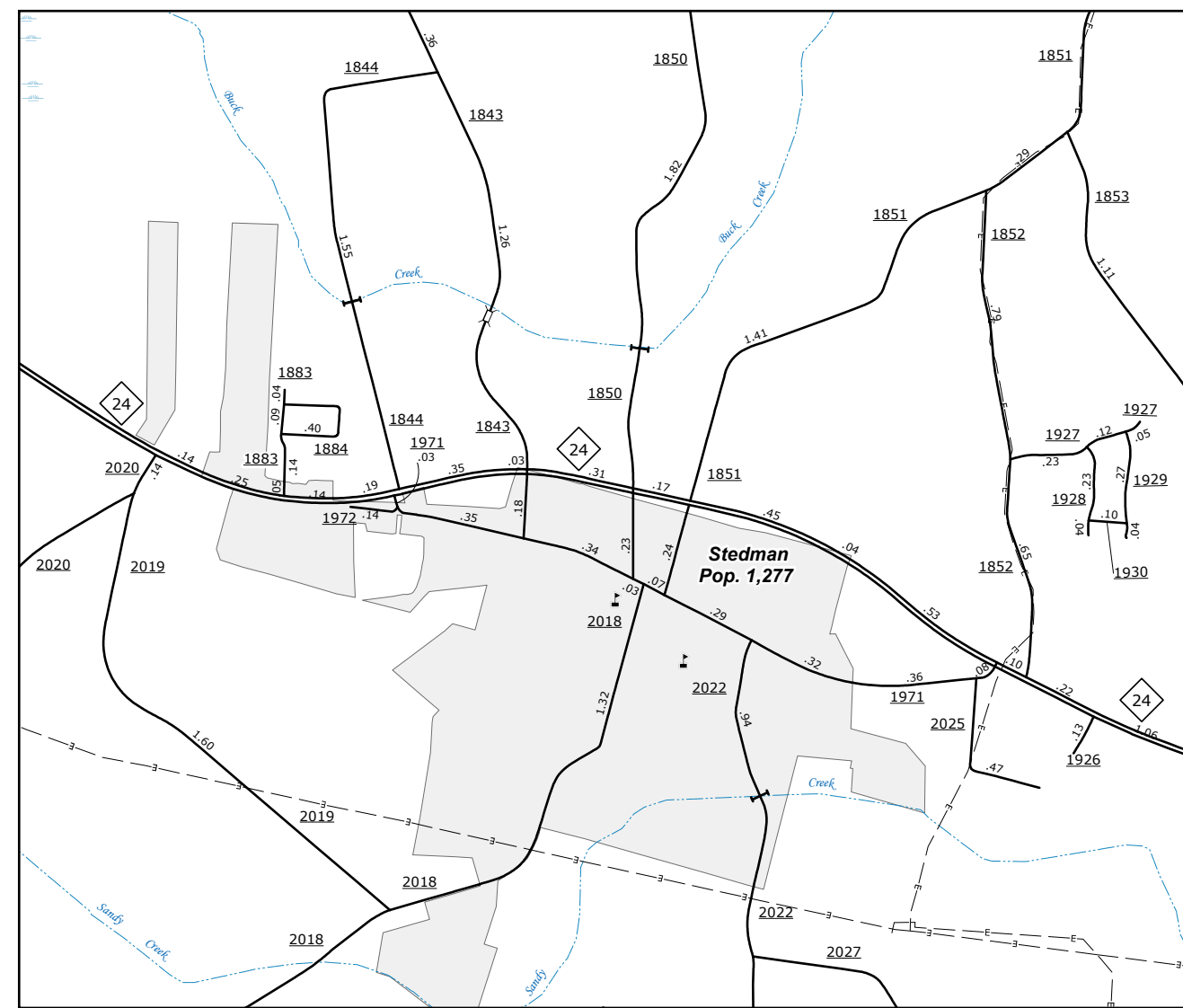
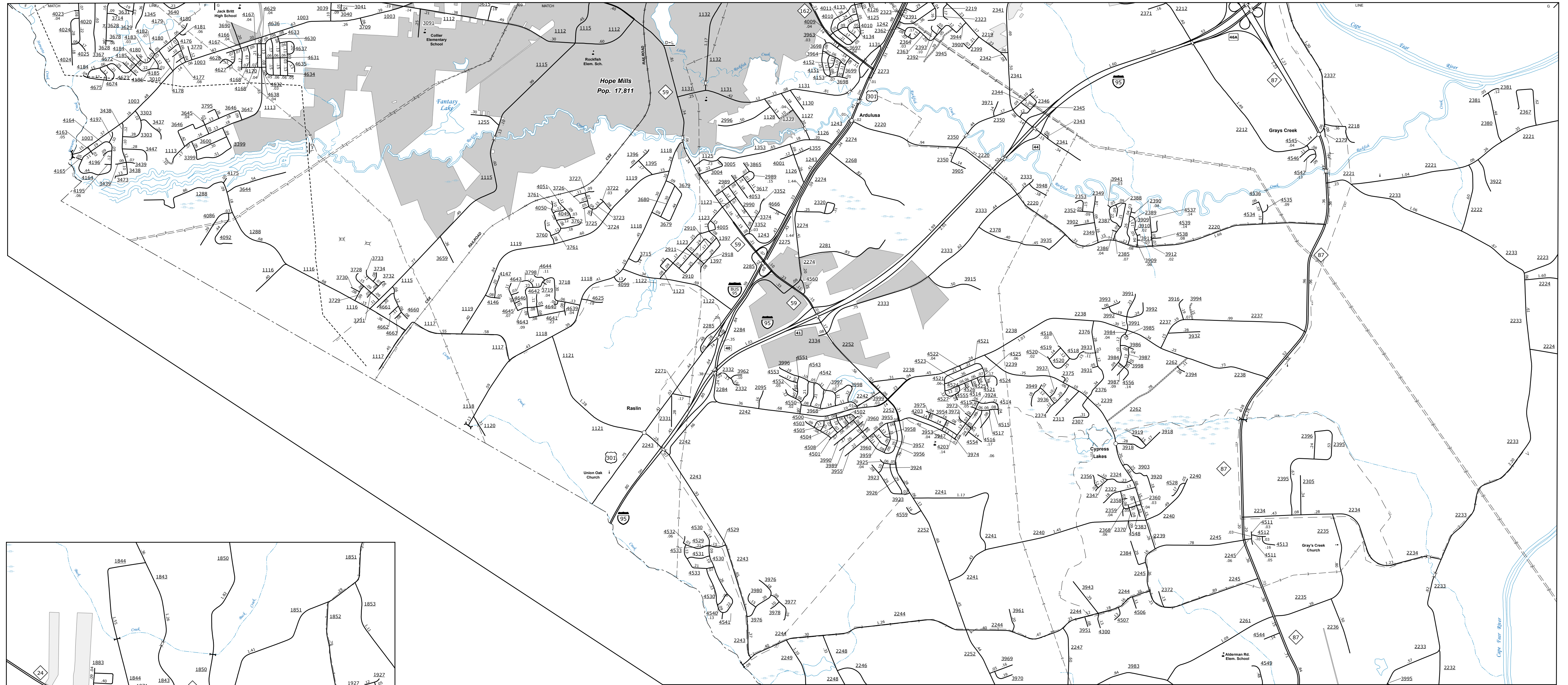


The Mapping Section's goal is to provide the most accurate and current information possible. Map data is compiled from numerous sources with varying degrees of accuracy. The primary source of information is the county's official GIS database. Other sources include aerial photography, field surveys, and other maps. The accuracy of the information is not guaranteed. For additional information, visit <http://www.ncdot.gov/transportation/mapping> and click on Data Providers or contact us by phone at (919) 835-6480.

COPIES OF THIS MAP ARE AVAILABLE FOR PURCHASE AT A LIMITED PUBLIC NOMINAL COST. ADDRESS: N.C. DEPARTMENT OF TRANSPORTATION, MSAU - MAPPING SECTION, 6809 BERRY RD, RALEIGH, NC 27695

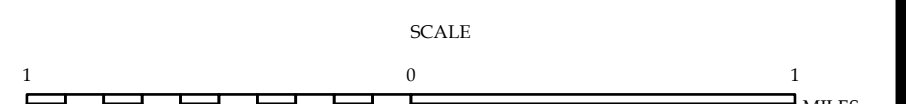


Hope Mills



ENLARGED MUNICIPAL AND SUBURBAN AREAS
CUMBERLAND COUNTY
 NORTH CAROLINA

PREPARED BY THE
 NORTH CAROLINA DEPARTMENT OF TRANSPORTATION
 OPERATIONS PROGRAM MANAGEMENT UNIT - MAPPING SECTION
 IN COOPERATION WITH THE
 U.S. DEPARTMENT OF TRANSPORTATION
 FEDERAL HIGHWAY ADMINISTRATION



10,000 FOOT GRID BASED ON NORTH CAROLINA PLANE COORDINATE SYSTEM
 LAMBERT CONFORMAL CONIC PROJECTION