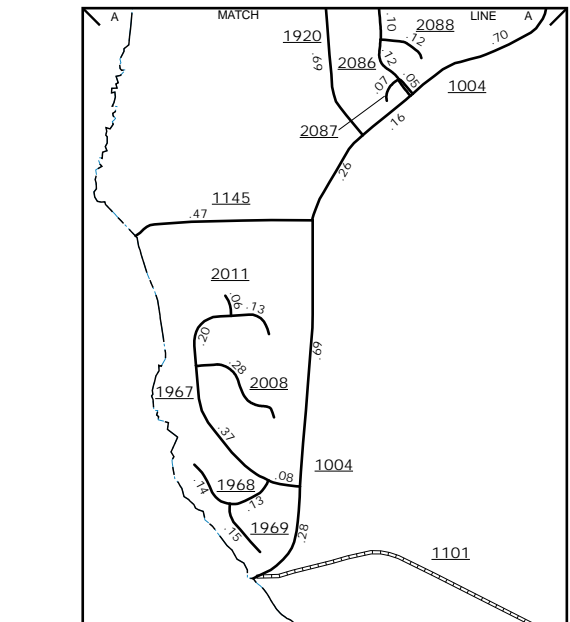
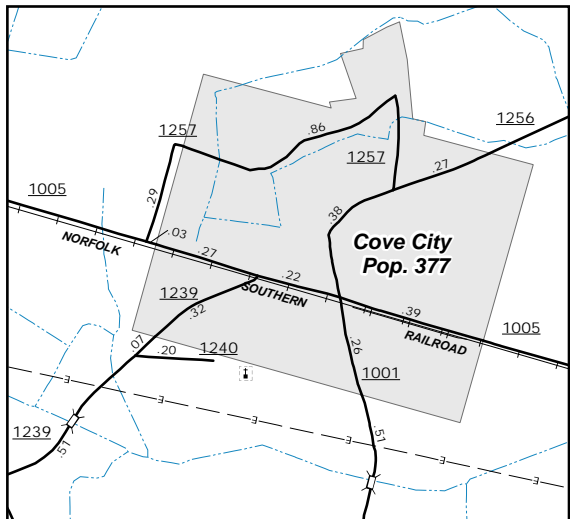
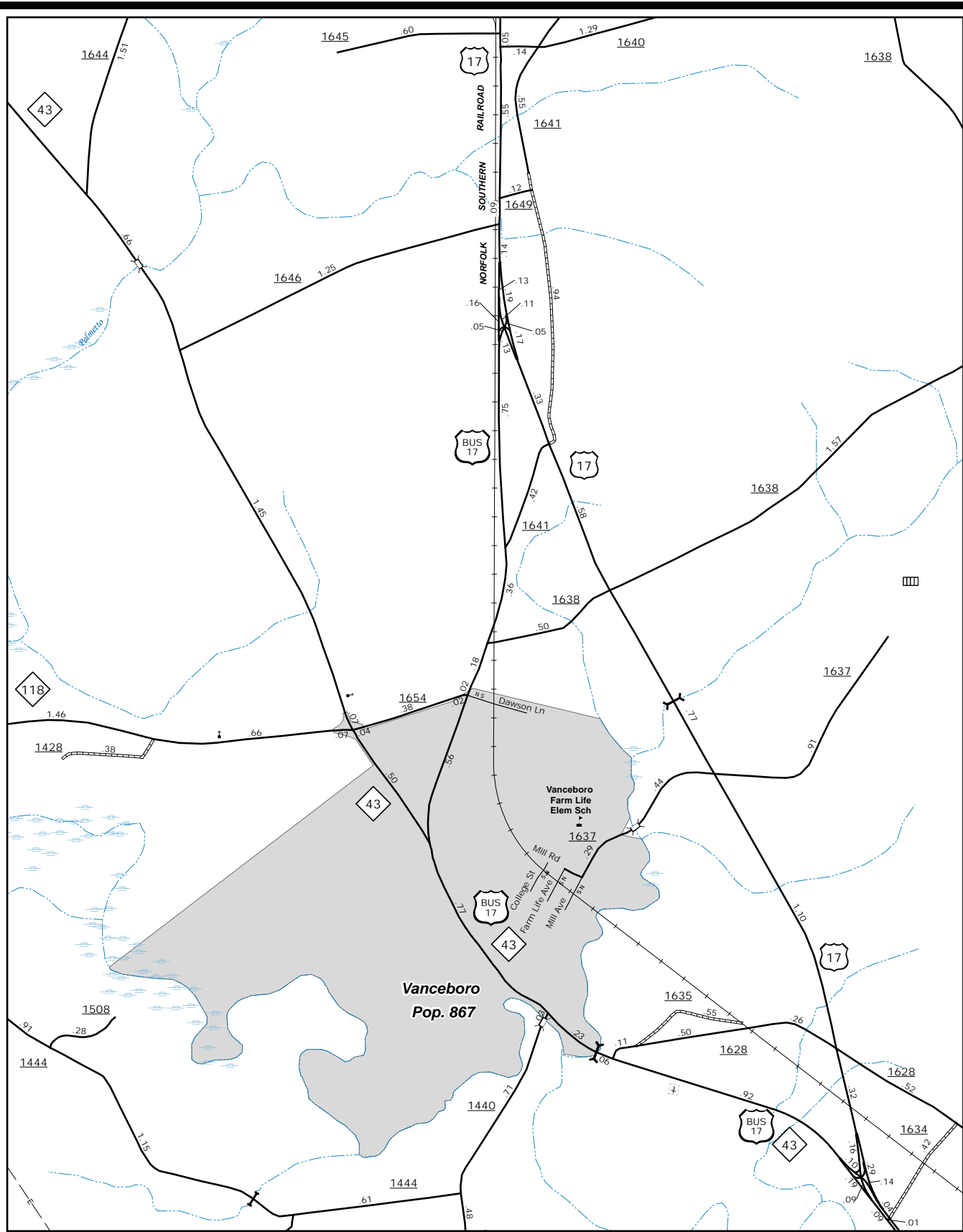
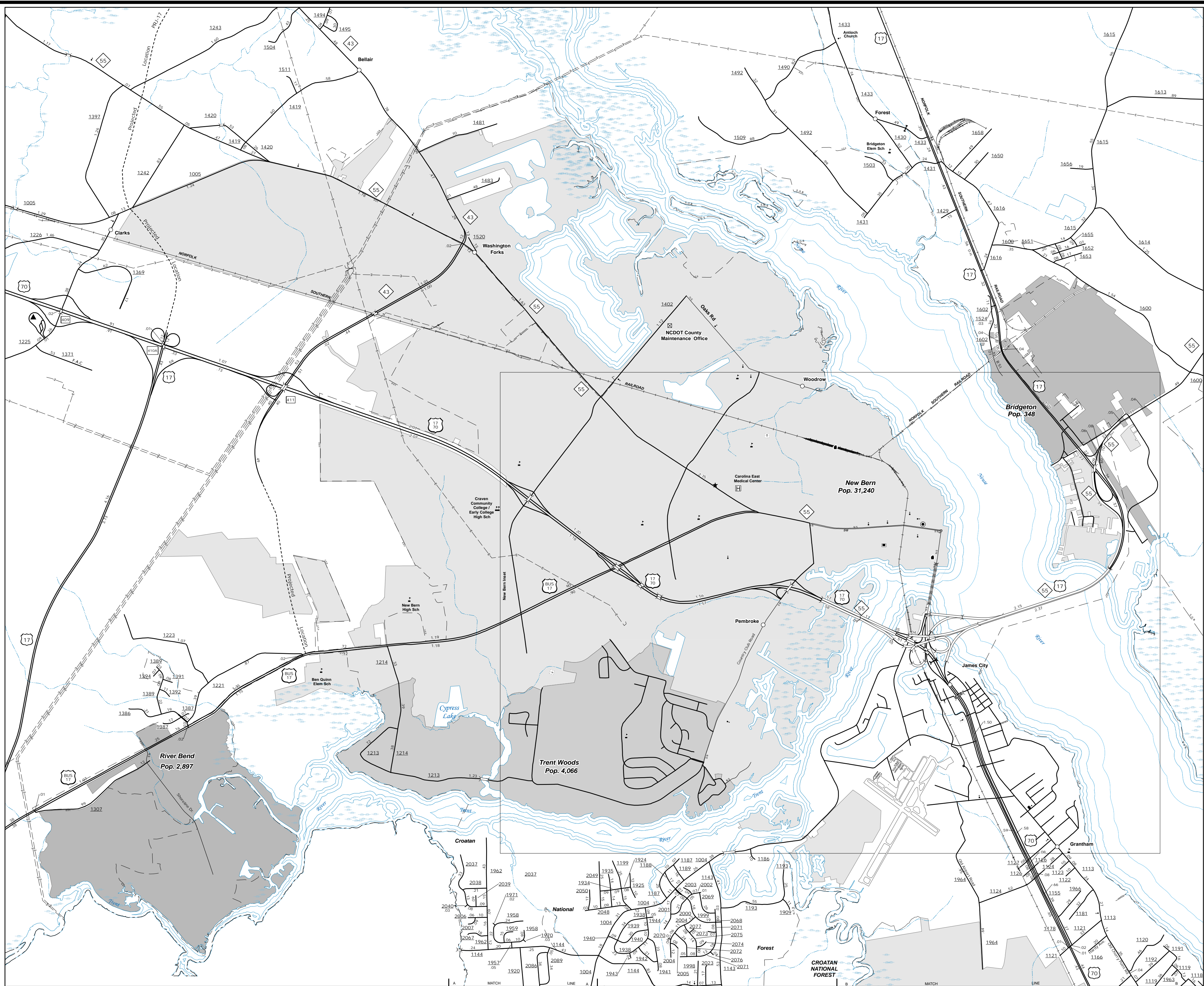
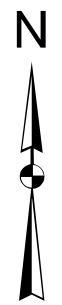


The Mapping Section's goal is to provide the most accurate and current information possible. Map data is compiled from numerous sources and is subject to change without notice. The mapping section is not responsible for the accuracy of information published on this map. The mapping section is not responsible for the accuracy of information published on this map. The mapping section is not responsible for the accuracy of information published on this map.

COPIES OF THIS MAP ARE AVAILABLE
FROM THE NORTH CAROLINA
ADDRESS-MAPPING SECTION
4809 BERN LANE
RAVENHILL, NC 27068



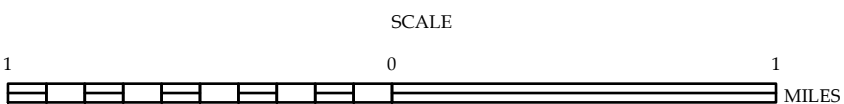
Vanceboro
Cove City



ENLARGED MUNICIPAL AND SUBURBAN AREAS

Craven County North Carolina

PREPARED BY THE
NORTH CAROLINA DEPARTMENT OF TRANSPORTATION
OPERATIONS PROGRAM MANAGEMENT UNIT - MAPPING SECTION
IN COOPERATION WITH THE
U.S. DEPARTMENT OF TRANSPORTATION
FEDERAL HIGHWAY ADMINISTRATION



10,000 FOOT GRID BASED ON NORTH CAROLINA PLANE COORDINATE SYSTEM
LAMBERT CONFORMAL CONIC PROJECTION

SHEET 2 OF 4