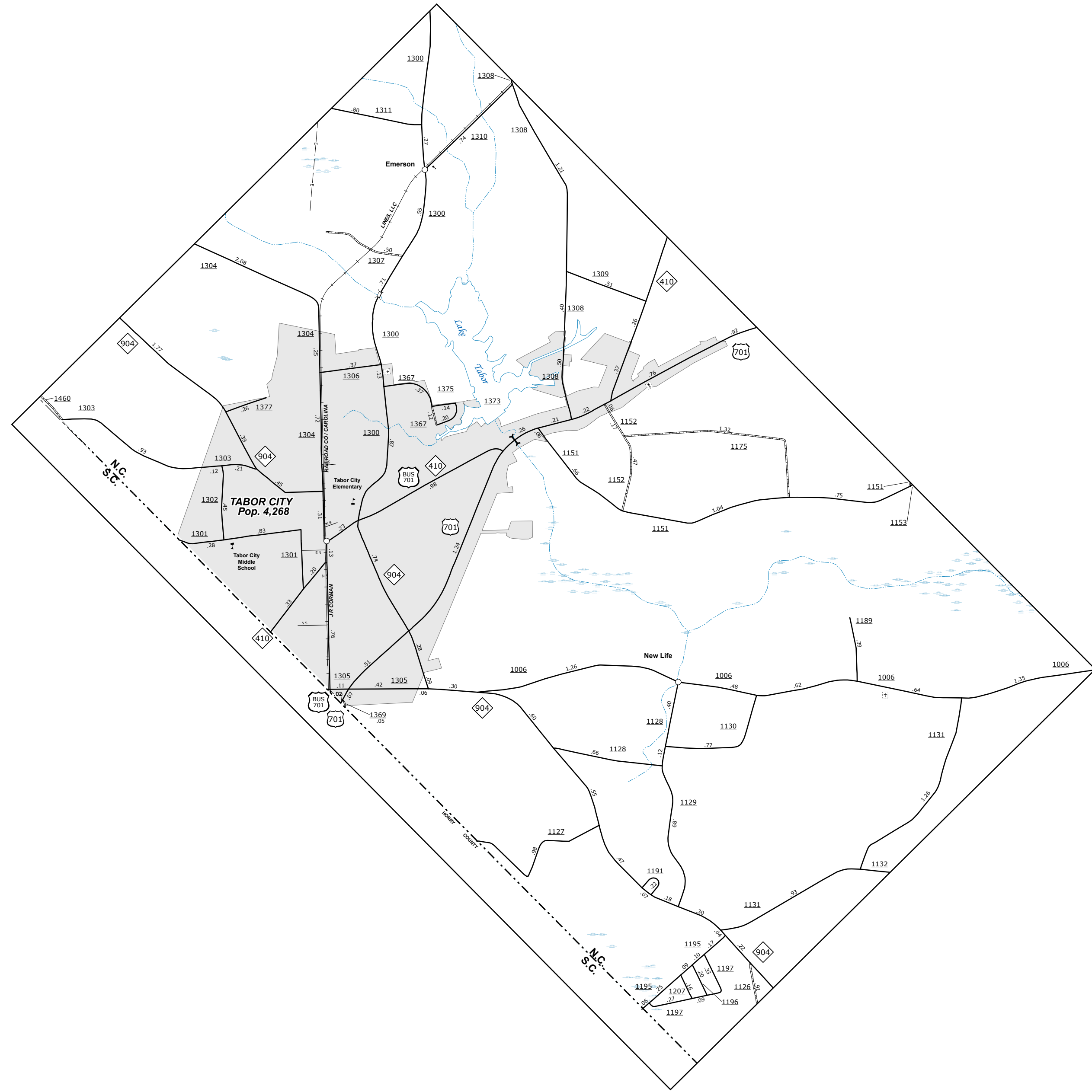
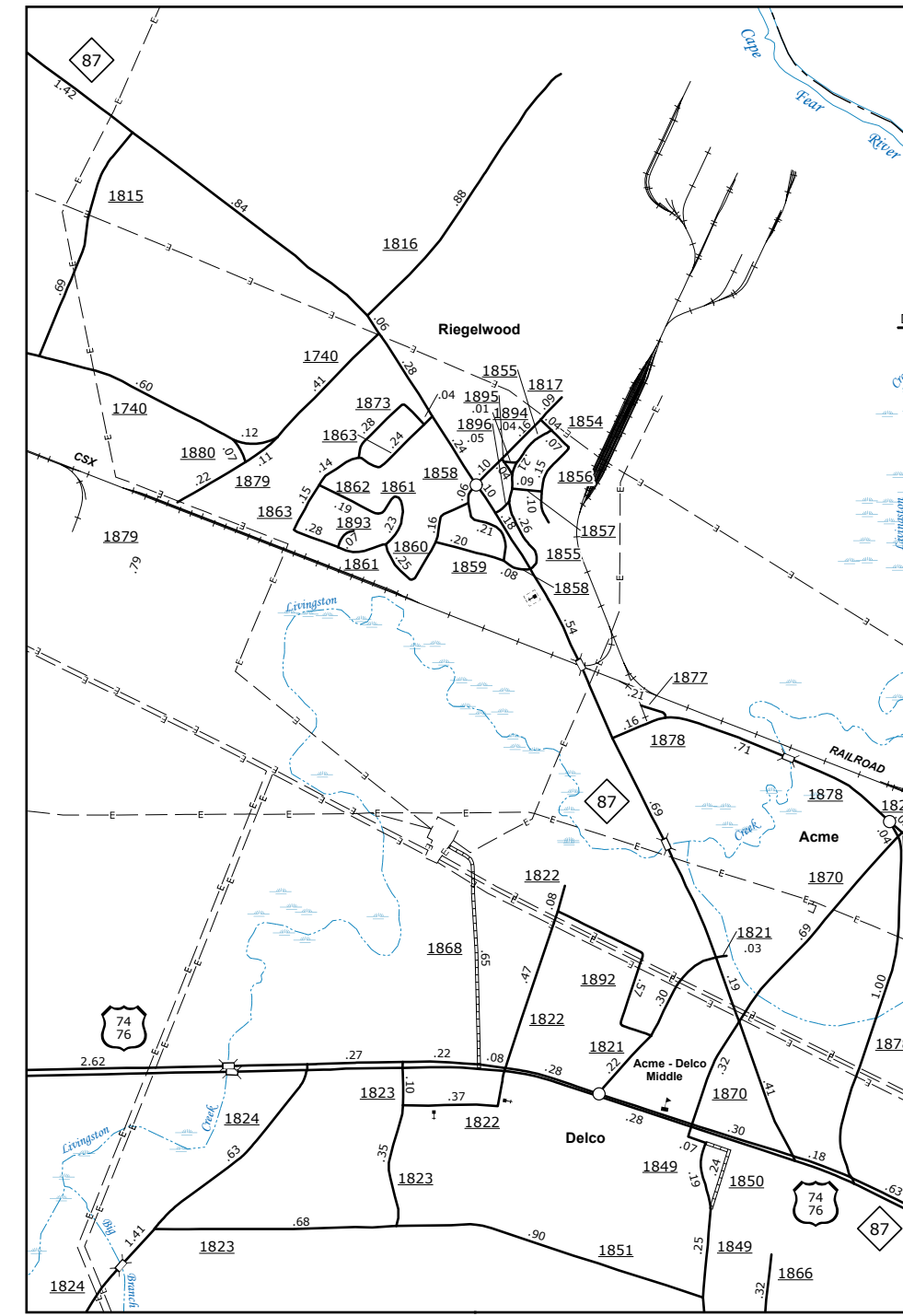


The Mapping Section's goal is to provide the most accurate and current information possible. Map data is compiled from various sources and is not guaranteed to be 100% accurate. The accuracy of the data is dependent on the accuracy of the data sources used. This map includes address information that is not guaranteed to be 100% accurate. For more information, visit www.ncdot.gov/transportation/mapping and click on Data Provision or contact us by phone at (919) 835-8480.

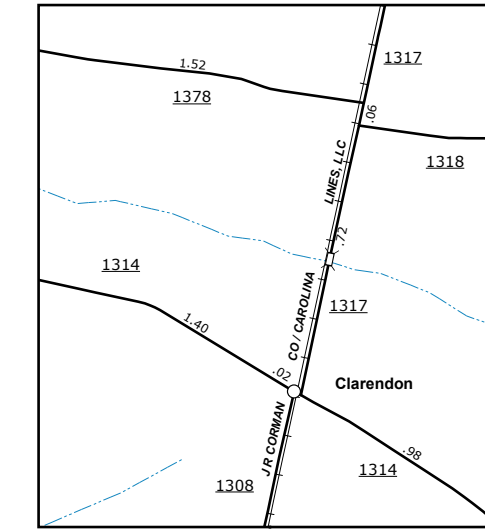
COPIES OF THIS MAP ARE AVAILABLE
 PUBLIC AT NOMINAL COST.
 ADDRESS
 N.C. DEPARTMENT OF TRANSPORTATION
 MSAU/MAPPING SECTION
 4809 BERRY RD
 RALEIGH, NC 27699



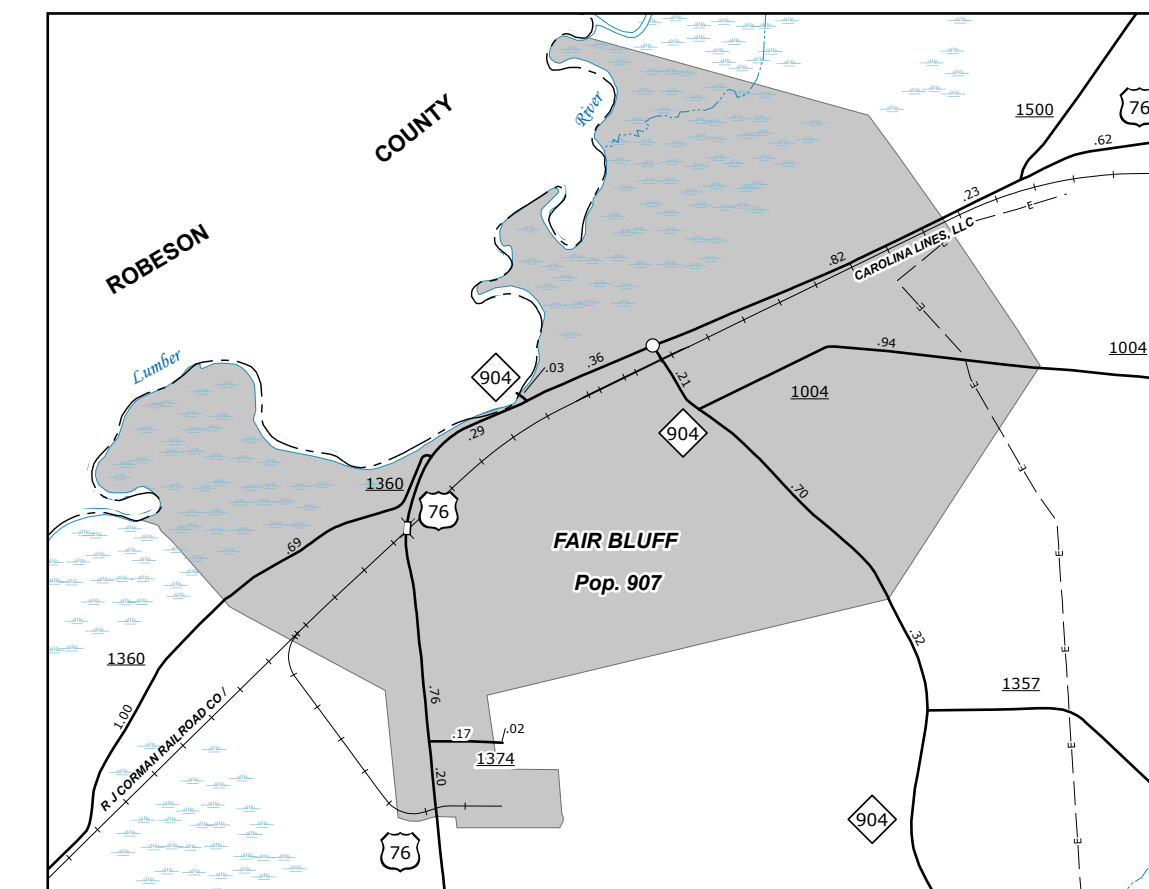
Tabor City



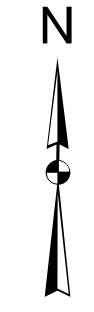
Acme



Clarendon

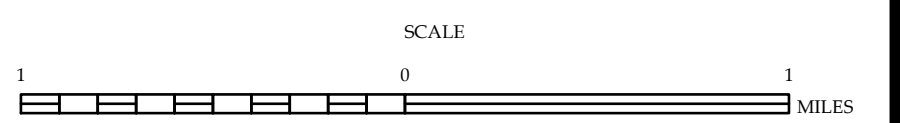


Fair Bluff



ENLARGED MUNICIPAL AND SUBURBAN AREAS
COLUMBUS COUNTY
 NORTH CAROLINA

PREPARED BY THE
 NORTH CAROLINA DEPARTMENT OF TRANSPORTATION
 OPERATIONS PROGRAM MANAGEMENT UNIT - MAPPING SECTION
 IN COOPERATION WITH THE
 U.S. DEPARTMENT OF TRANSPORTATION
 FEDERAL HIGHWAY ADMINISTRATION



10,000 FOOT GRID BASED ON NORTH CAROLINA PLANE COORDINATE SYSTEM
 LAMBERT CONFORMAL CONIC PROJECTION