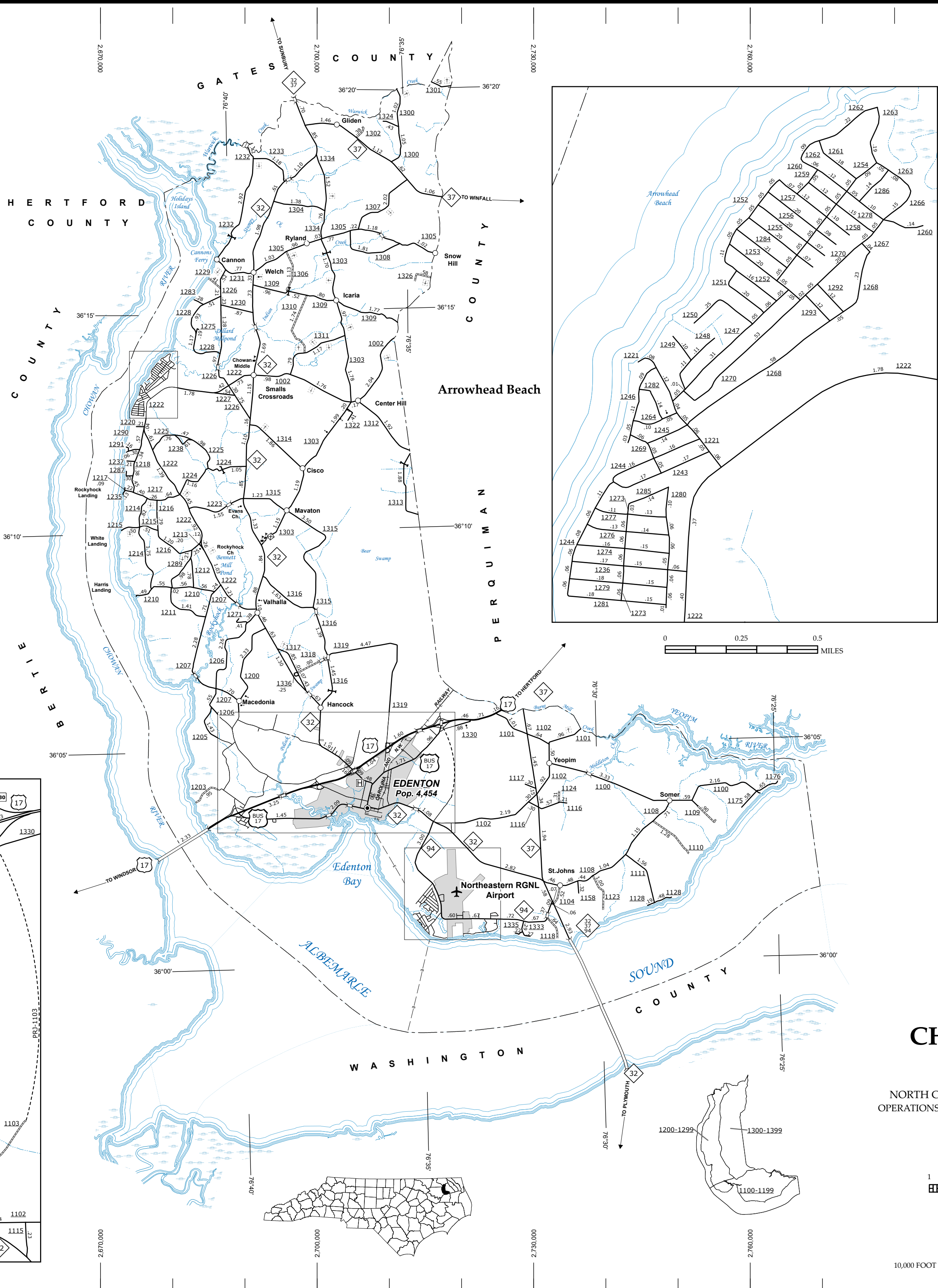
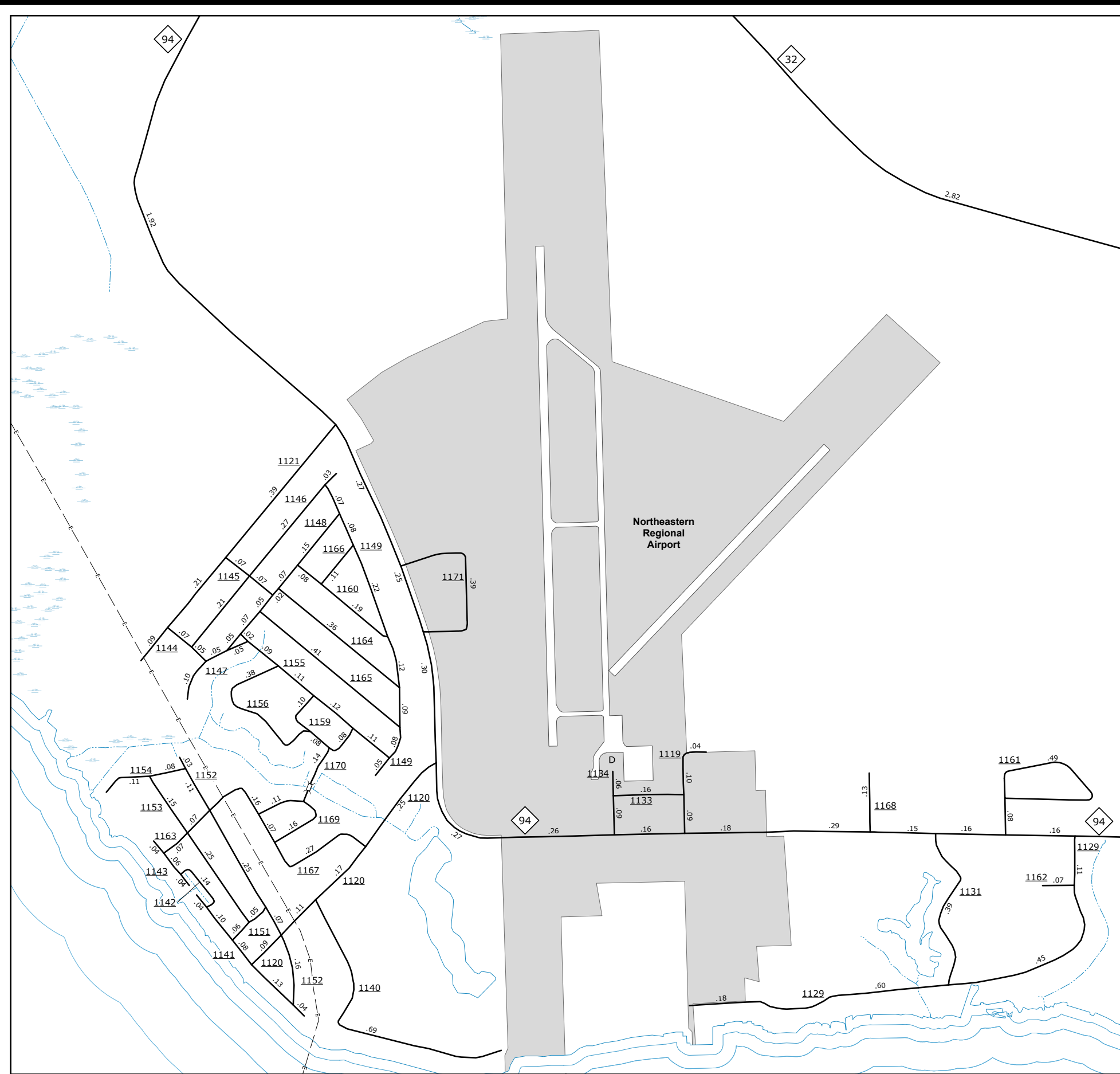
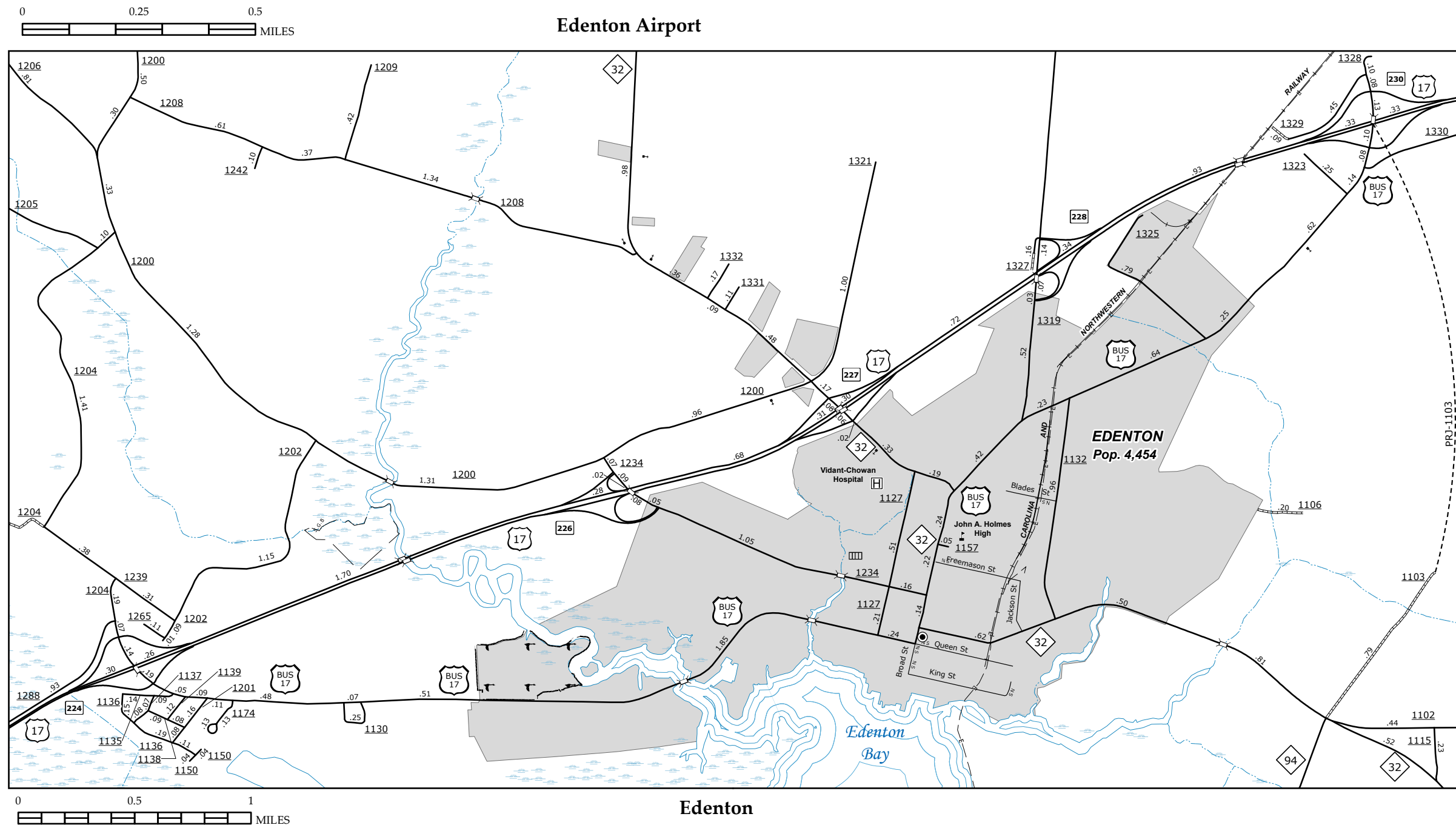


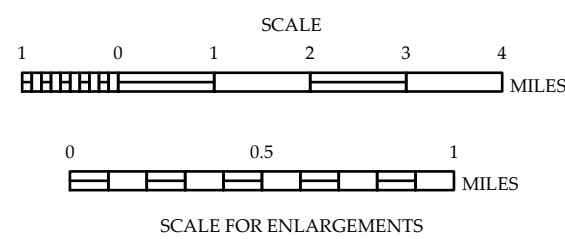
The Mapping Section's goal is to provide the most accurate and current information possible. Map data is compiled from numerous sources including aerial photography, ground surveys, and other reliable sources. As a result, the accuracy of the information shown on this map is not guaranteed. The information shown on this map was last updated in June 2022. For additional information, visit <http://www.ncdot.gov/travel/infomaps/> and click on Data Providers or contact us by phone at (919) 855-9480.

COPIES OF THIS MAP ARE AVAILABLE
FROM THE NORTH CAROLINA DEPARTMENT OF TRANSPORTATION
ADDRESS: N.C. DEPARTMENT OF TRANSPORTATION
MS&U - MAPING SECTION
4809 BERNI, RD.
RALEIGH, NC 27609



CHOWAN COUNTY NORTH CAROLINA

PREPARED BY THE
NORTH CAROLINA DEPARTMENT OF TRANSPORTATION
OPERATIONS PROGRAM MANAGEMENT UNIT - MAPPING SECTION
IN COOPERATION WITH THE
U.S. DEPARTMENT OF TRANSPORTATION
FEDERAL HIGHWAY ADMINISTRATION



10,000 FOOT GRID BASED ON NORTH CAROLINA PLANE COORDINATE SYSTEM
LAMBERT CONFORMAL CONIC PROJECTION