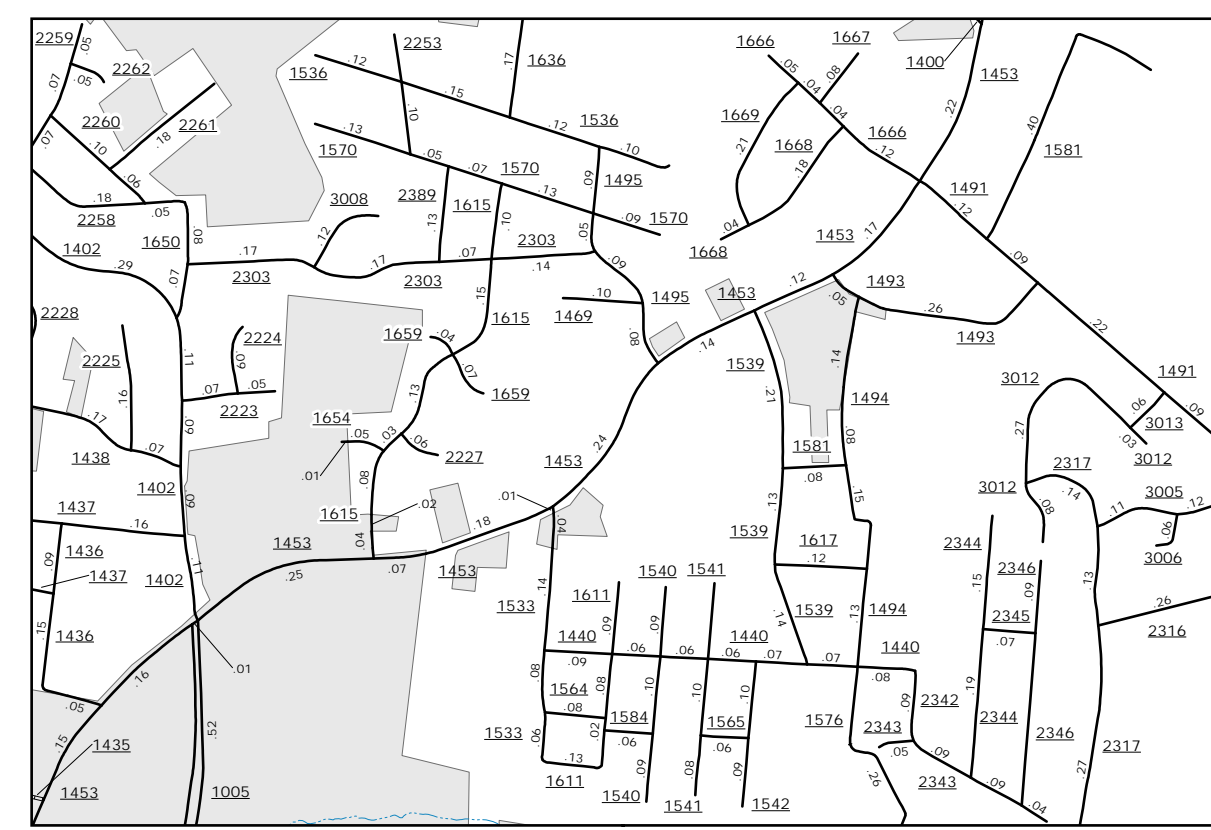
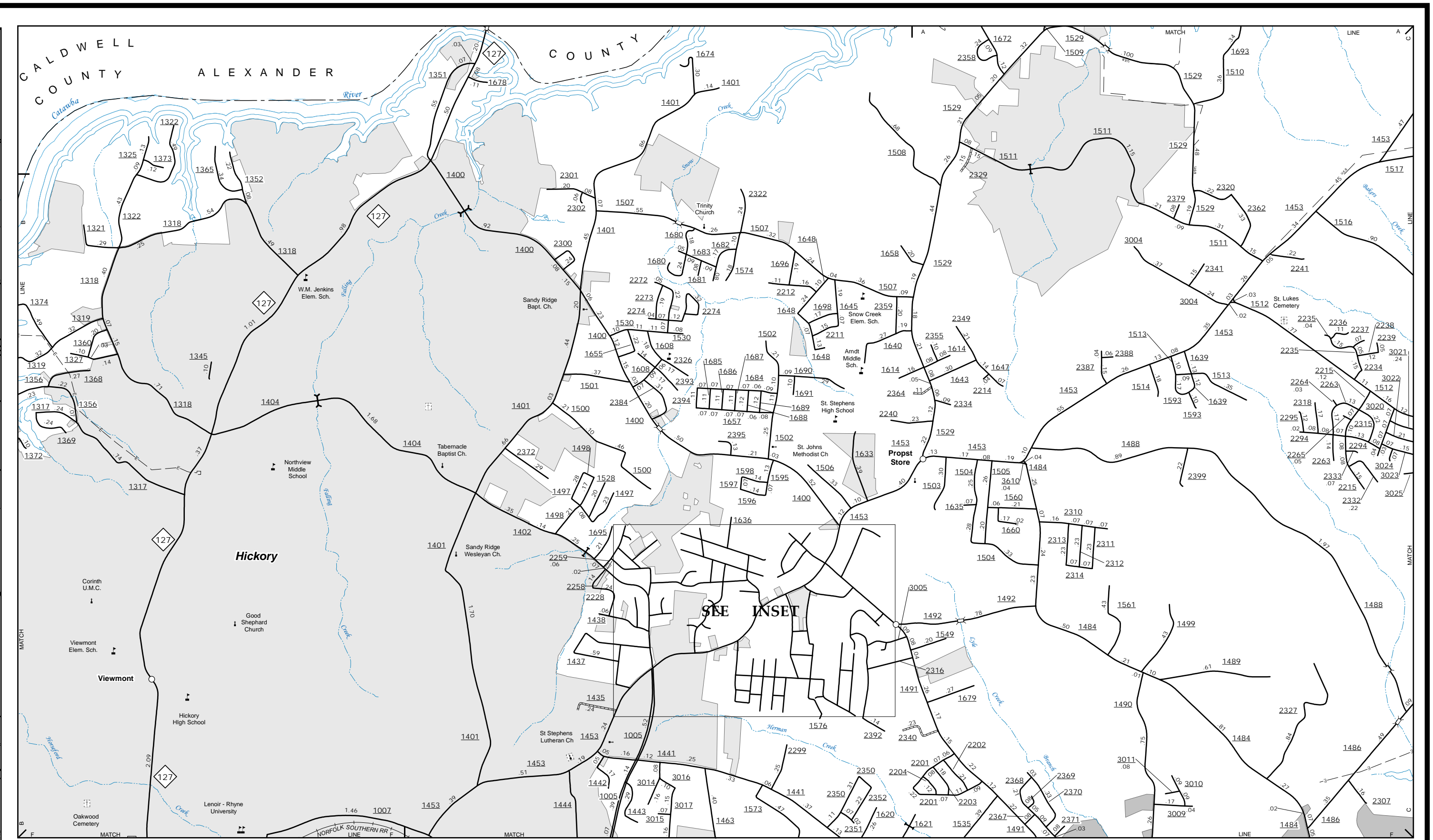
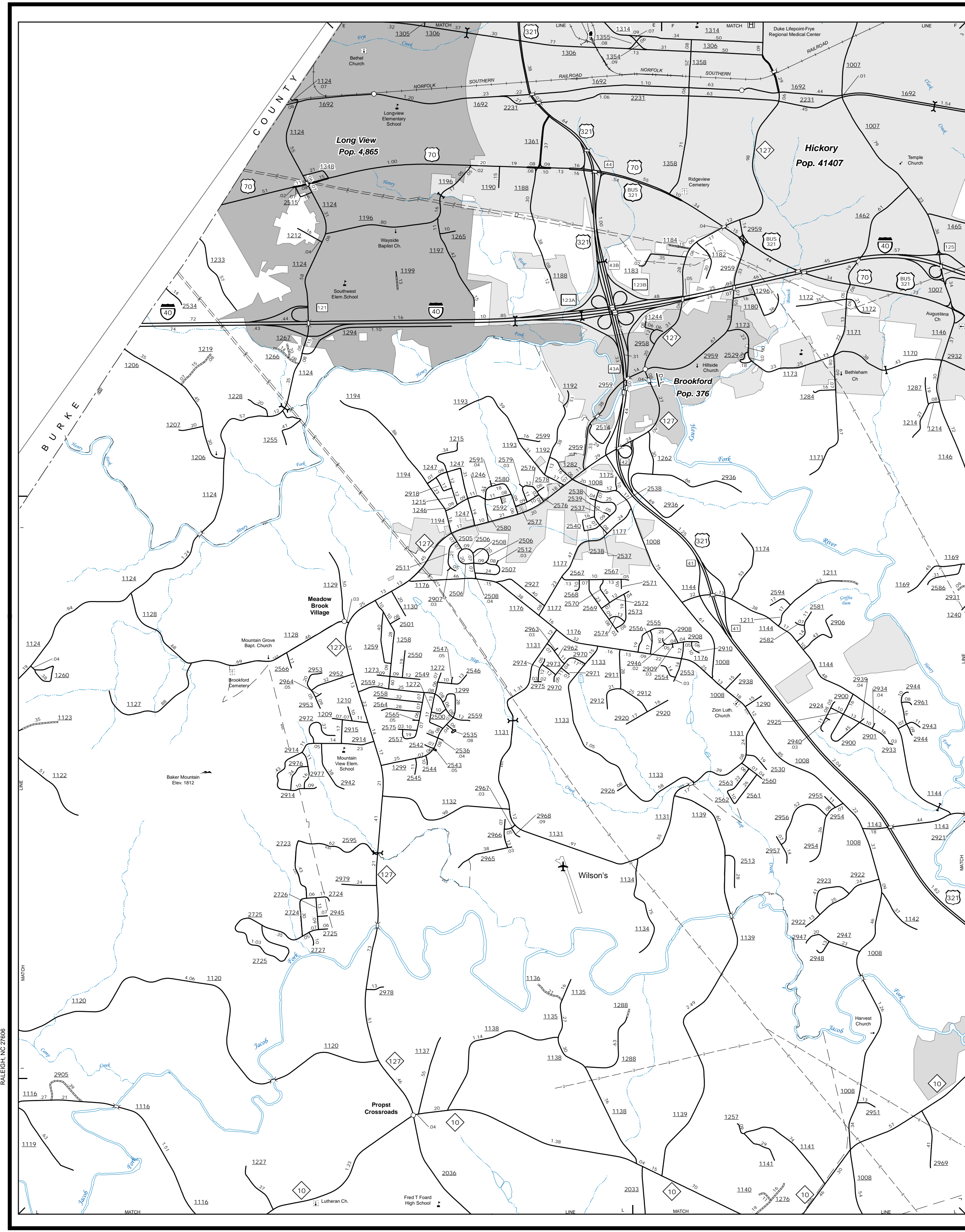


The Mapping Section's goal is to provide the most accurate and current information possible. Map data is compiled from various sources and is subject to change. The information shown on this map was last updated in September 2021. For additional information, visit <http://www.ncdot.gov/transportation/mapping> and click on Data Providers or contact us by phone at (819) 836-8480.

COPIES OF THIS MAP ARE AVAILABLE AT A PUBLIC NOMINAL COST. ADDRESS: N.C. DEPARTMENT OF TRANSPORTATION, MSAU-MAPPING SECTION, 4809 BERNI, LENOIR, NC 28649, (819) 836-8480



Saint Stephens Inset  
0 0.25 0.5 MILES

Saint Stephens and Vicinity

Northern Long View

### ENLARGED MUNICIPAL AND SUBURBAN AREAS CATAWBA COUNTY NORTH CAROLINA

PREPARED BY THE  
NORTH CAROLINA DEPARTMENT OF TRANSPORTATION  
OPERATIONS PROGRAM MANAGEMENT UNIT - MAPPING SECTION  
IN COOPERATION WITH THE  
U.S. DEPARTMENT OF TRANSPORTATION  
FEDERAL HIGHWAY ADMINISTRATION

