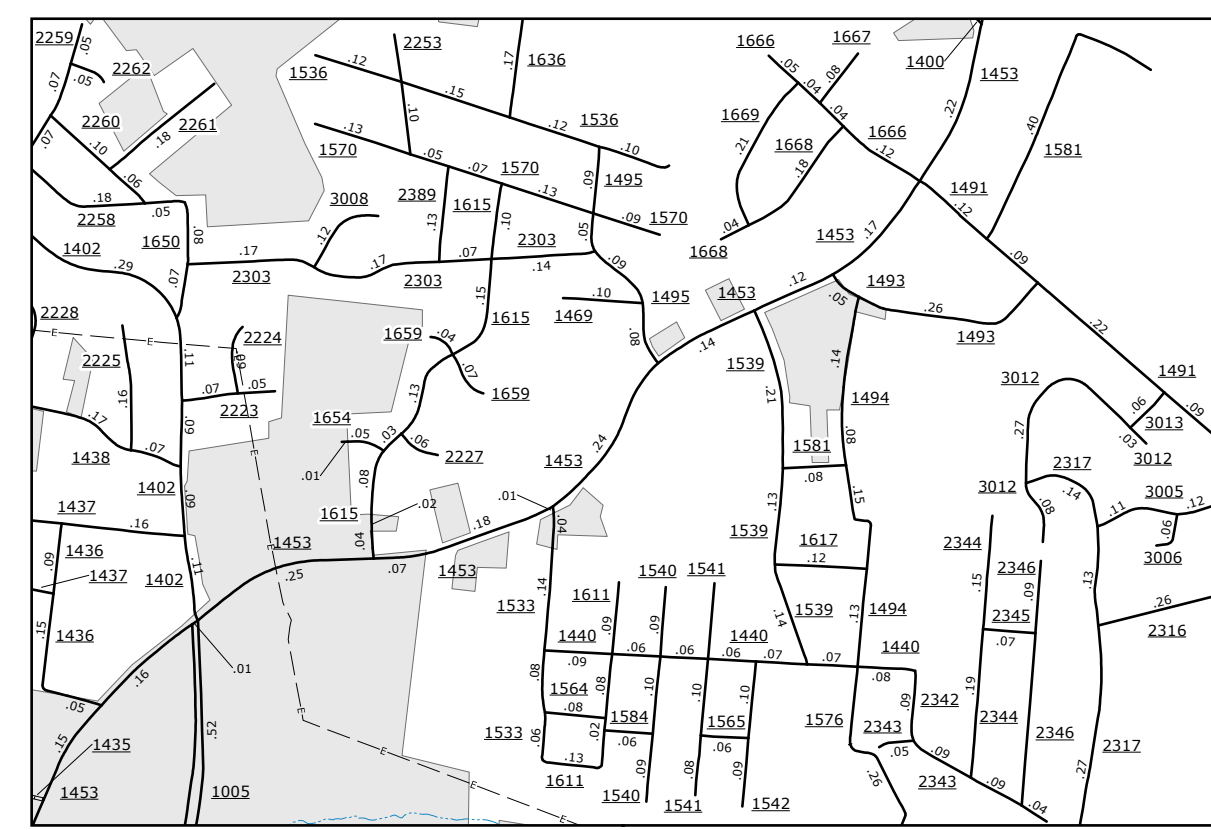
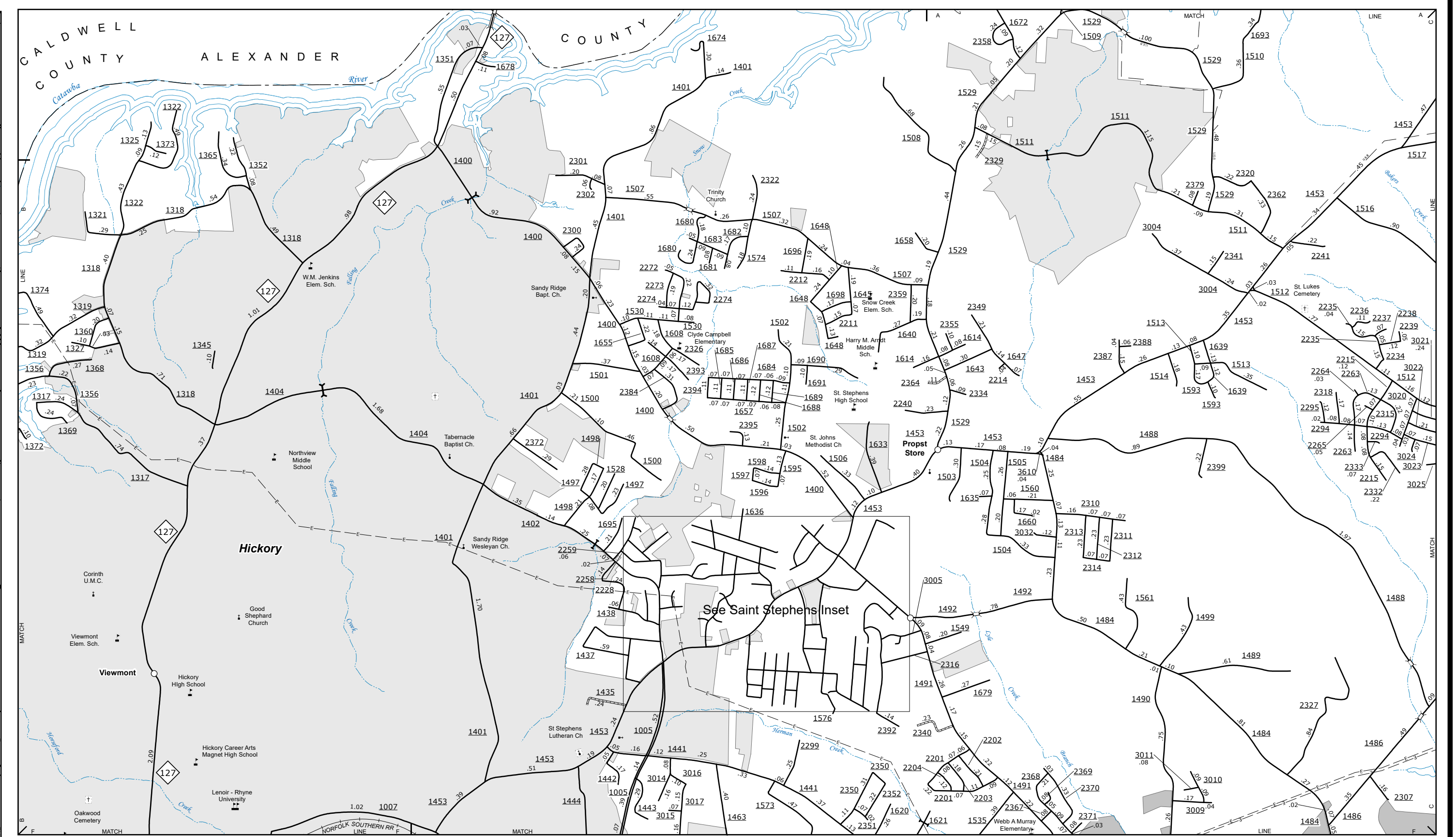
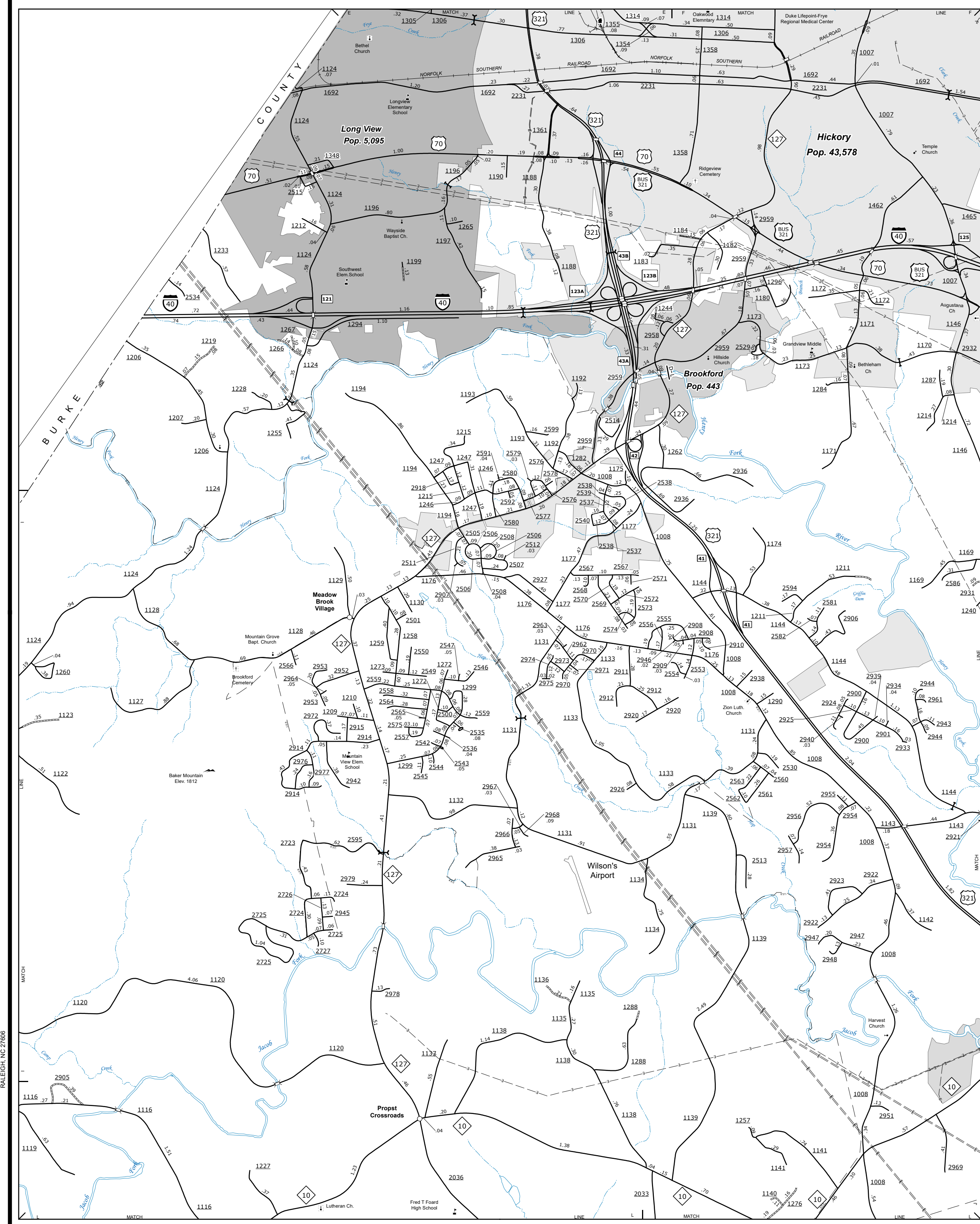


The Mapping Section's goal is to provide the most accurate and current information possible. Map data is compiled from various sources including aerial photography, ground surveys, and other data. The information shown on this map was last updated in July 2022. For additional information, visit <http://www.ncdot.gov/Information/MapData/MapData.aspx> and click on Data Providers or contact us by phone at (919) 855-8480.

COPIES OF THIS MAP ARE AVAILABLE  
 PUBLIC INFORMATION COST  
 ADDRESS: N.C. DEPARTMENT OF TRANSPORTATION  
 4801 BERRY RD.  
 RALEIGH, NC 27689



**Saint Stephens Inset**  
 0 0.25 0.5 MILES

**Saint Stephens and Vicinity**

**Northern Long View**



**ENLARGED MUNICIPAL AND SUBURBAN AREAS  
 CATAWBA COUNTY  
 NORTH CAROLINA**

PREPARED BY THE  
 NORTH CAROLINA DEPARTMENT OF TRANSPORTATION  
 OPERATIONS PROGRAM MANAGEMENT UNIT - MAPPING SECTION  
 IN COOPERATION WITH THE  
 U.S. DEPARTMENT OF TRANSPORTATION  
 FEDERAL HIGHWAY ADMINISTRATION

SCALE  
 1 0 1 MILES  
 10,000 FOOT GRID BASED ON NORTH CAROLINA PLANE COORDINATE SYSTEM  
 LAMBERT CONFORMAL CONIC PROJECTION