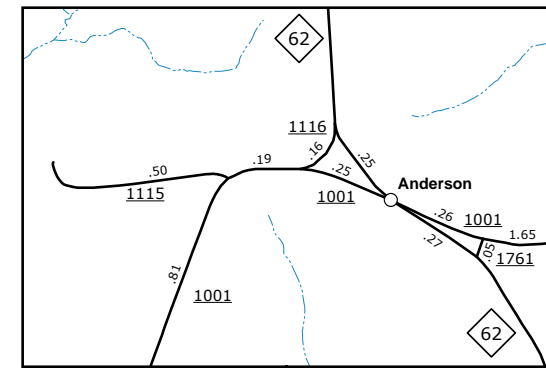
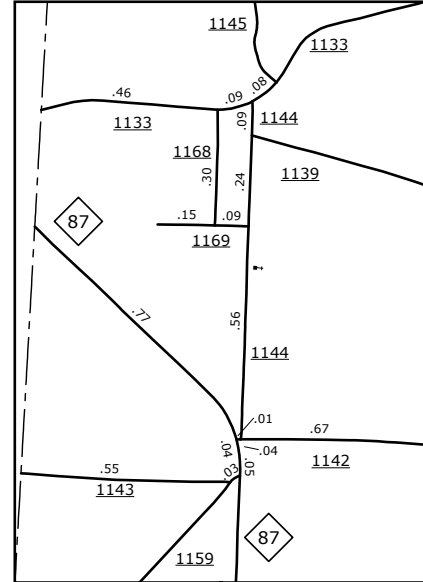
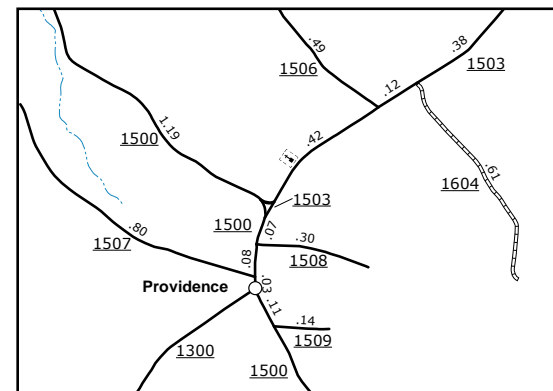
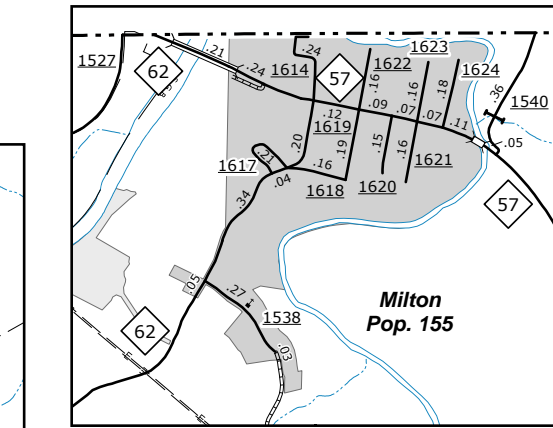
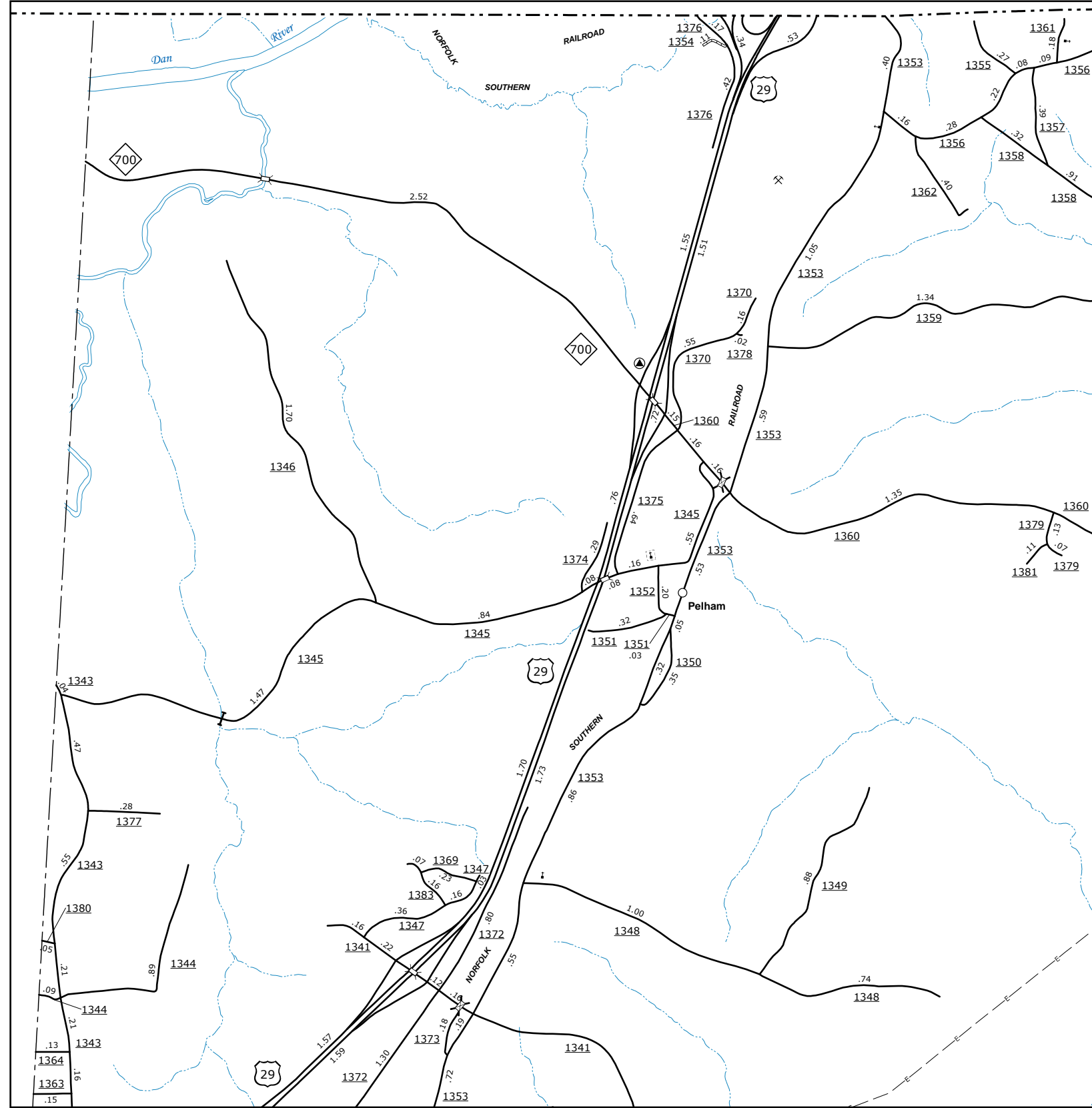
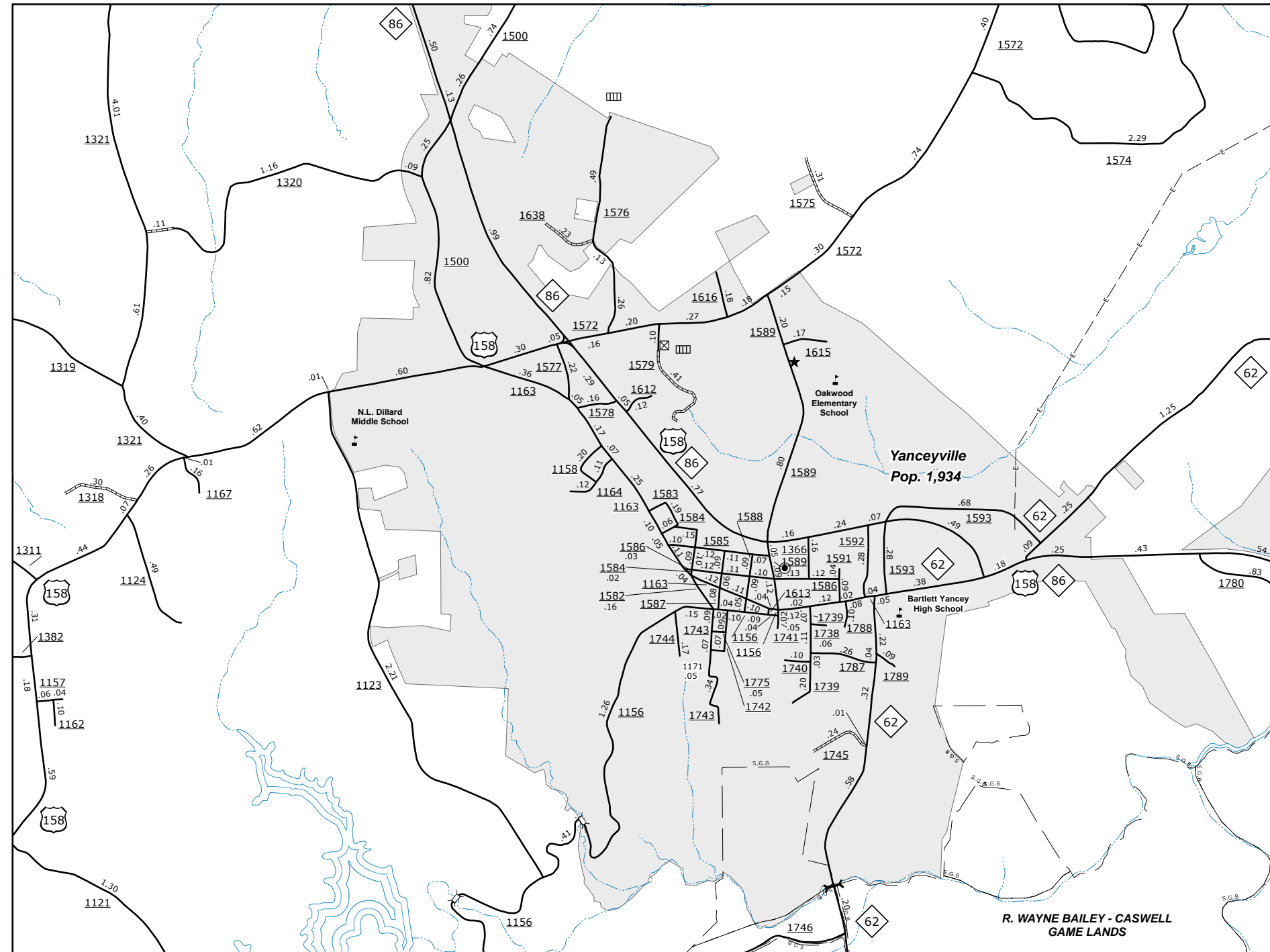


The Mapping Section's goal is to provide the most accurate and current information possible. Map data is compiled from numerous sources and is subject to change. The Department of Transportation does not warrant the accuracy of the information provided. This map was last updated in June, 2020. For additional information, visit <http://www.ncdot.gov/transportation/mapping>, and click on Data Providers or contact us by phone at (919) 855-8490.

COPIES OF THIS MAP ARE AVAILABLE
FOR PURCHASE AT A PUBLIC UTILITY NOMINAL COST.
ADDRESS: N.C. DEPARTMENT OF TRANSPORTATION
4809 BERNI RD.
RALEIGH, NC 27609

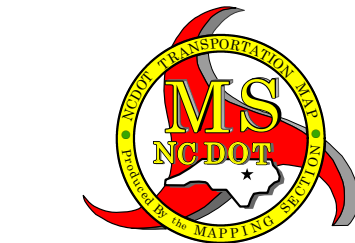


Yanceyville

Milton

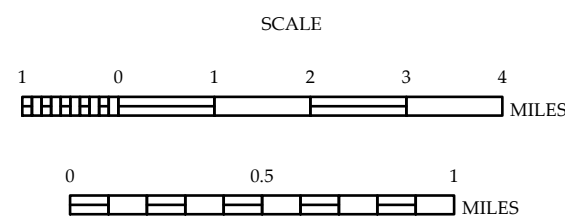
Providence

Inset 1



CASWELL COUNTY NORTH CAROLINA

PREPARED BY THE
NORTH CAROLINA DEPARTMENT OF TRANSPORTATION
OPERATIONS PROGRAM MANAGEMENT UNIT - MAPPING SECTION
IN COOPERATION WITH THE
U.S. DEPARTMENT OF TRANSPORTATION
FEDERAL HIGHWAY ADMINISTRATION



10,000 FOOT GRID BASED ON NORTH CAROLINA PLANE COORDINATE SYSTEM
LAMBERT CONFORMAL CONIC PROJECTION