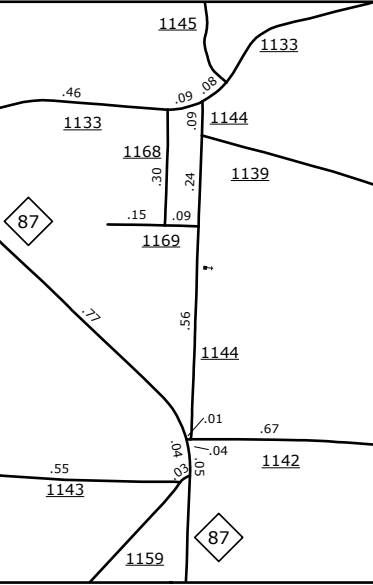
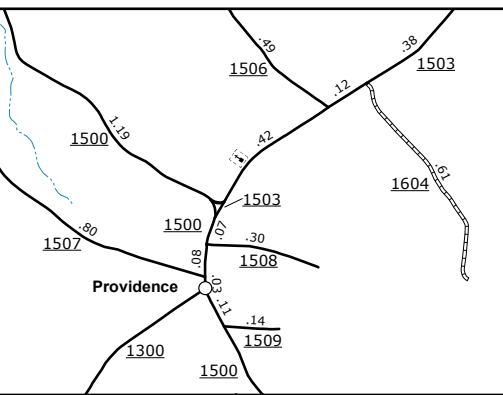
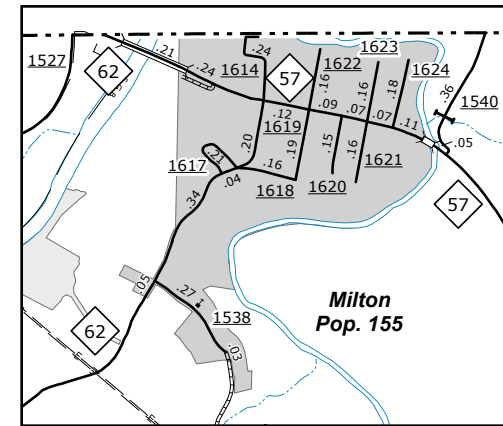
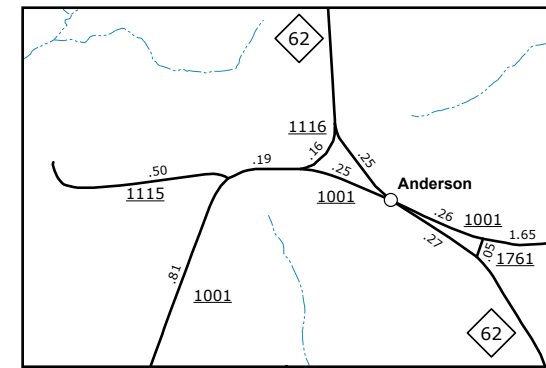
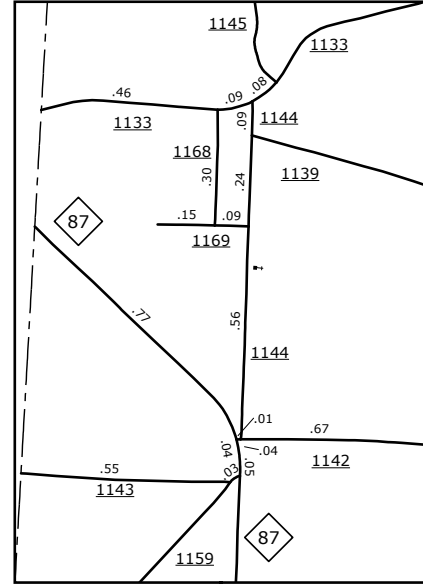
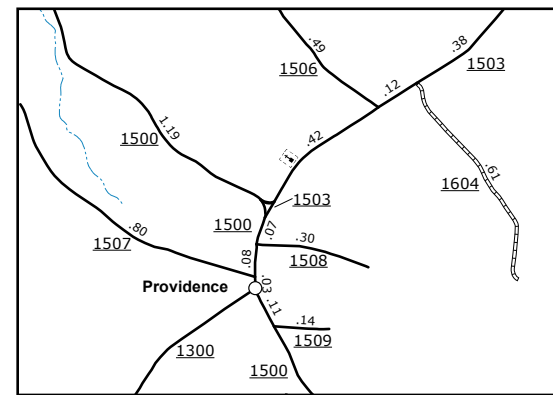
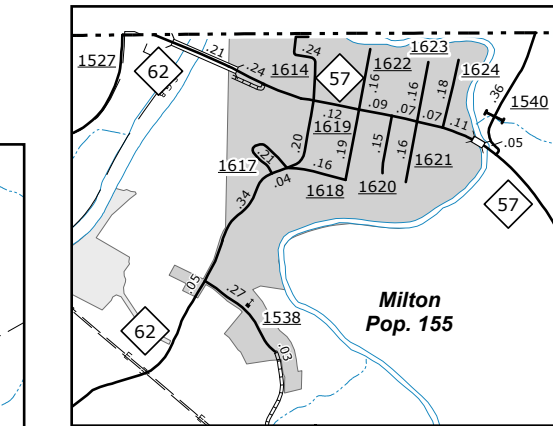
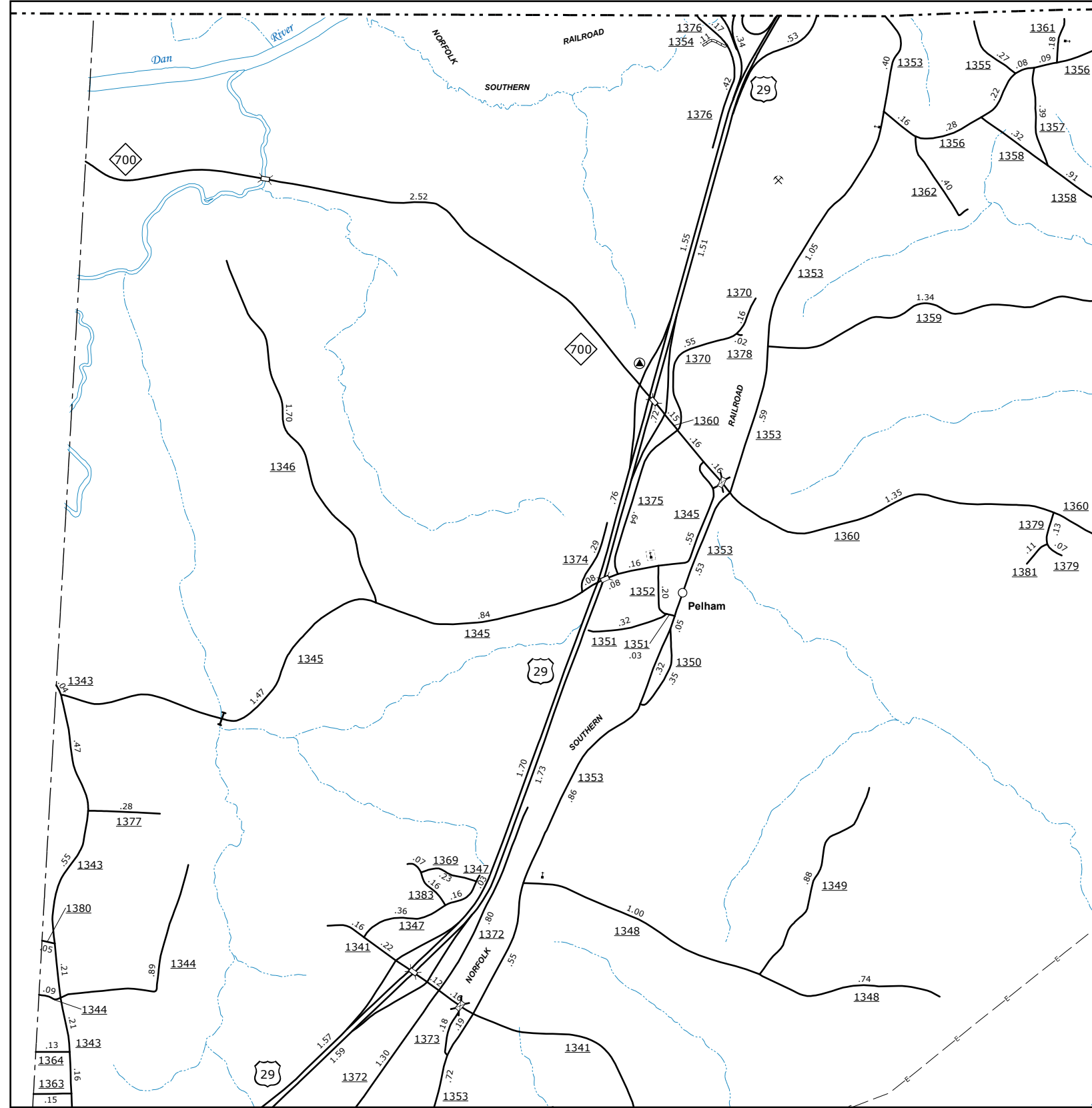
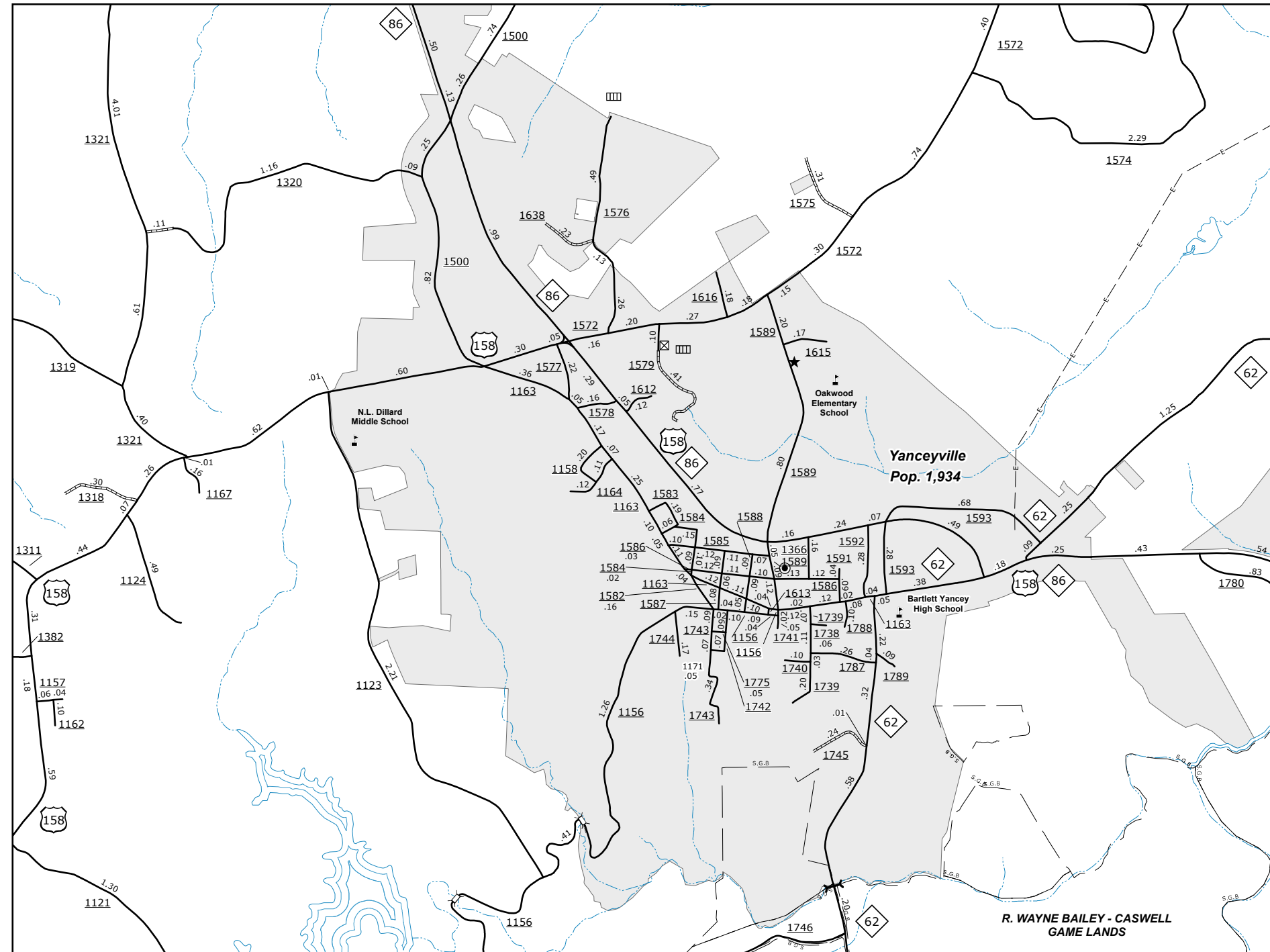


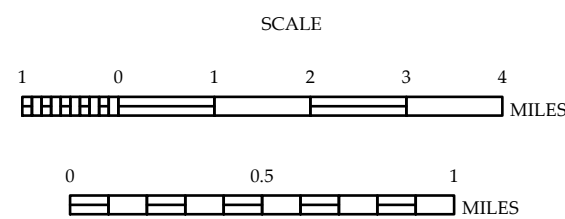
The Mapping Section's goal is to provide the most accurate and current information possible. Map data is compiled from numerous sources and is subject to change without notice. The accuracy of the information is not guaranteed. The information is provided for informational purposes only. For additional information, visit <http://www.ncdot.gov/transportation/mapping> and click on Data Providers or contact us by phone at (919) 835-8490.

COPIES OF THIS MAP ARE AVAILABLE  
FOR PURCHASE AT A PUBLIC UTILITY COST.  
ADDRESS: N.C. DEPARTMENT OF TRANSPORTATION  
4809 BERNI RD.  
RALEIGH, NC 27609



## CASWELL COUNTY NORTH CAROLINA

PREPARED BY THE  
NORTH CAROLINA DEPARTMENT OF TRANSPORTATION  
OPERATIONS PROGRAM MANAGEMENT UNIT - MAPPING SECTION  
IN COOPERATION WITH THE  
U.S. DEPARTMENT OF TRANSPORTATION  
FEDERAL HIGHWAY ADMINISTRATION



10,000 FOOT GRID BASED ON NORTH CAROLINA PLANE COORDINATE SYSTEM  
LAMBERT CONFORMAL CONIC PROJECTION