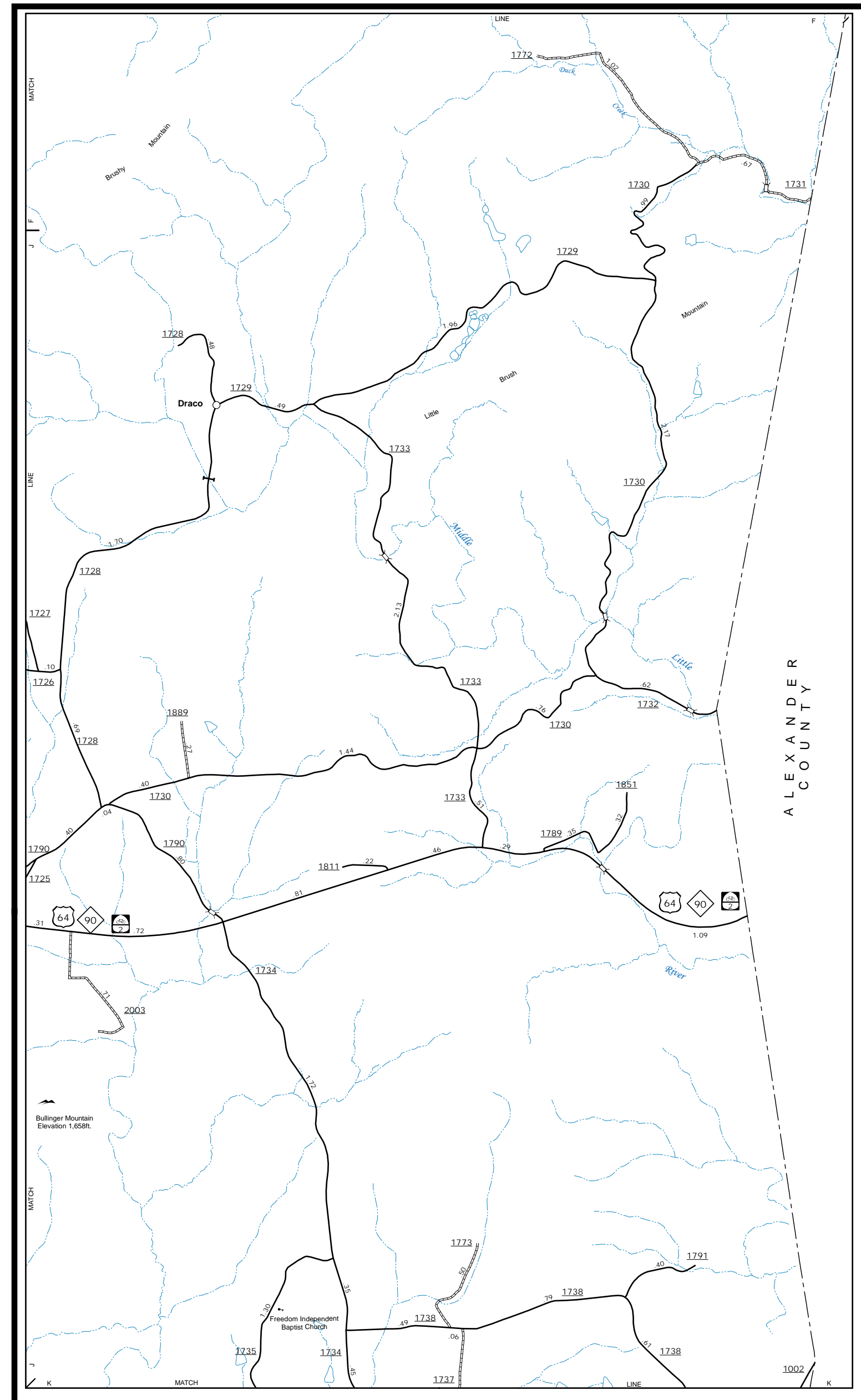
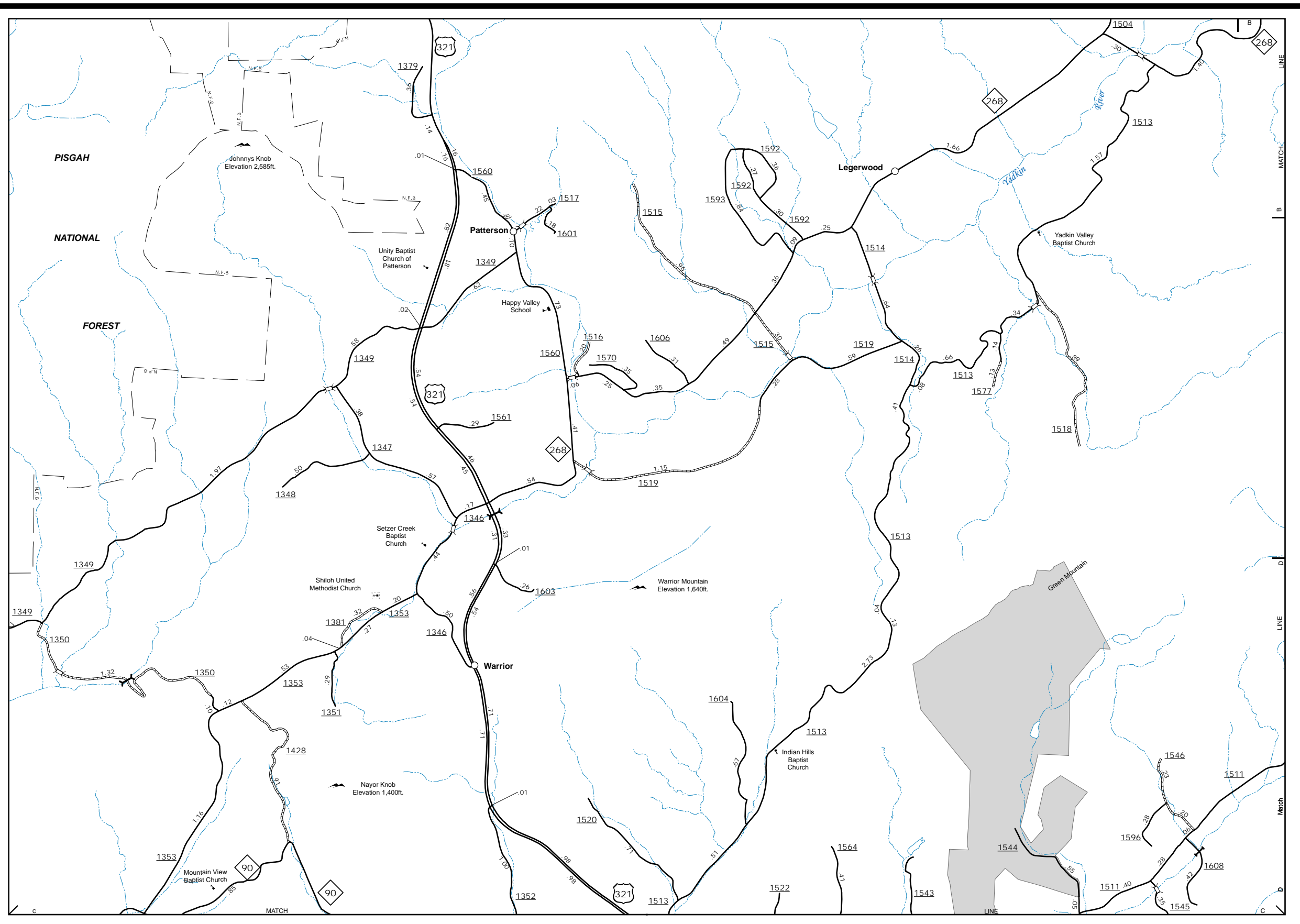


The Mapping Section's goal is to provide the most accurate and current information possible. Map data is compiled from various sources and is not guaranteed to be 100% accurate. The information is provided for informational purposes only. The user should verify the accuracy of the information before using it for any purpose. For additional information, visit [www.ncdot.gov/transportation/mapping](http://www.ncdot.gov/transportation/mapping) and click on Data Providers or contact us by phone at (919) 855-8480.

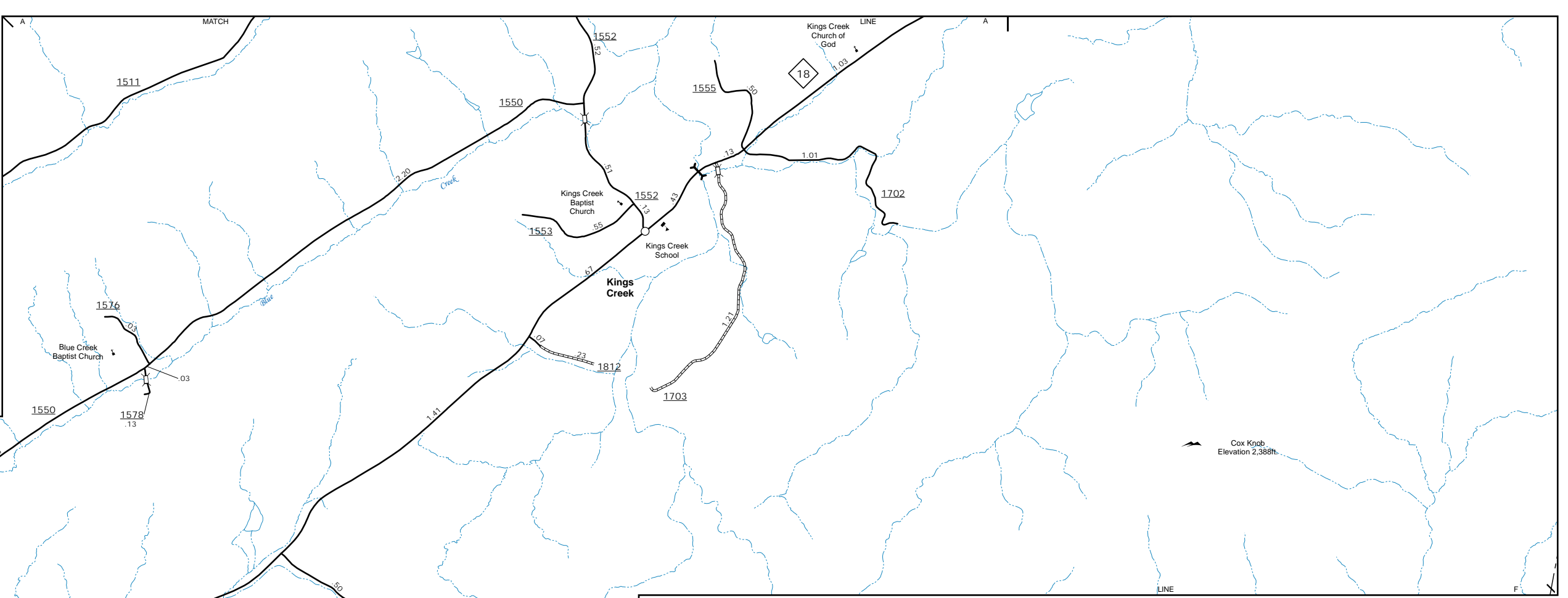
COPIES OF THIS MAP ARE AVAILABLE FOR PURCHASE AT A NOMINAL COST. ADDRESS: NORTH CAROLINA DEPARTMENT OF TRANSPORTATION, MSAU - MAPPING SECTION, 4809 BERRY LANE, RALEIGH, NC 27606



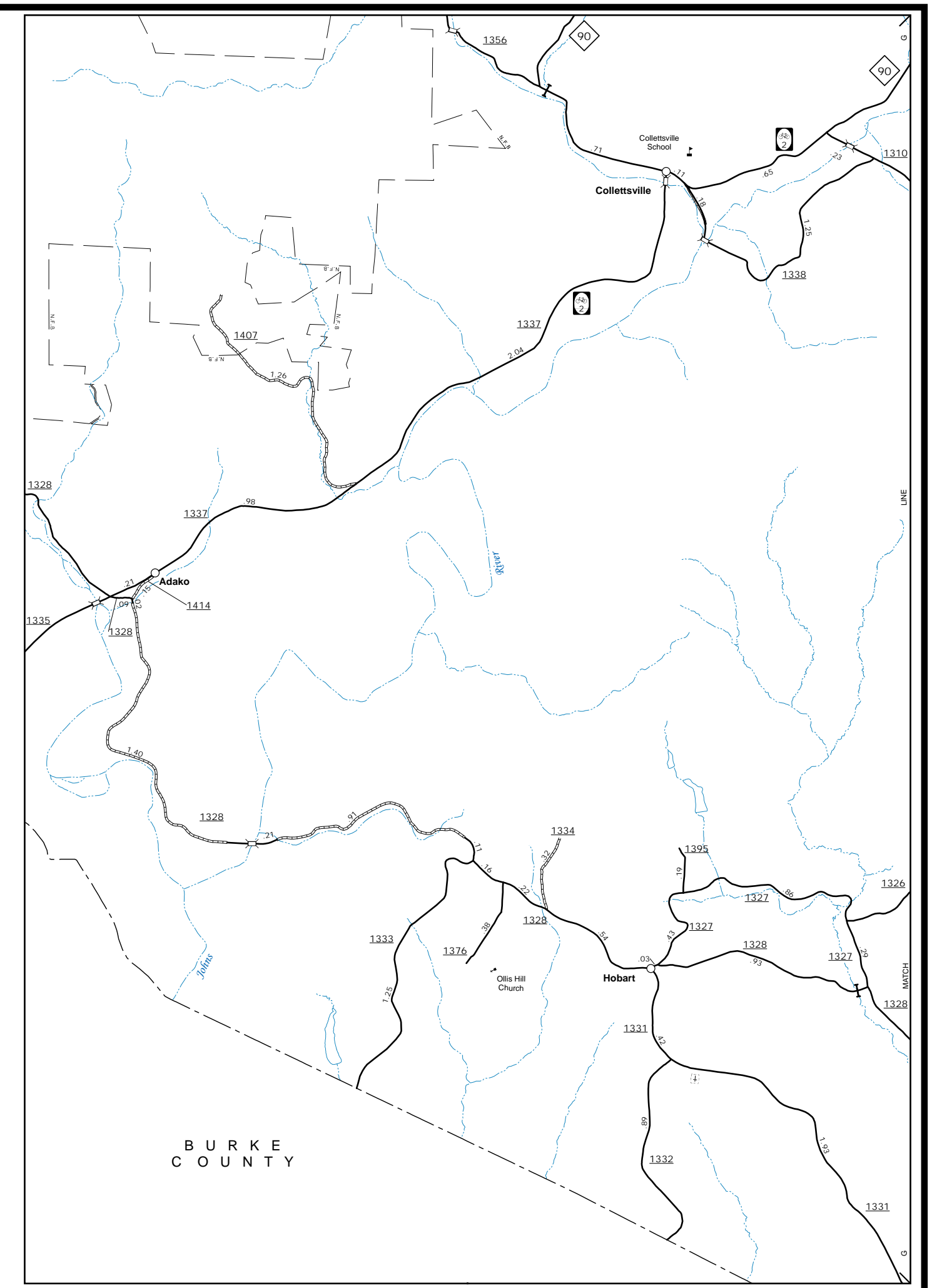
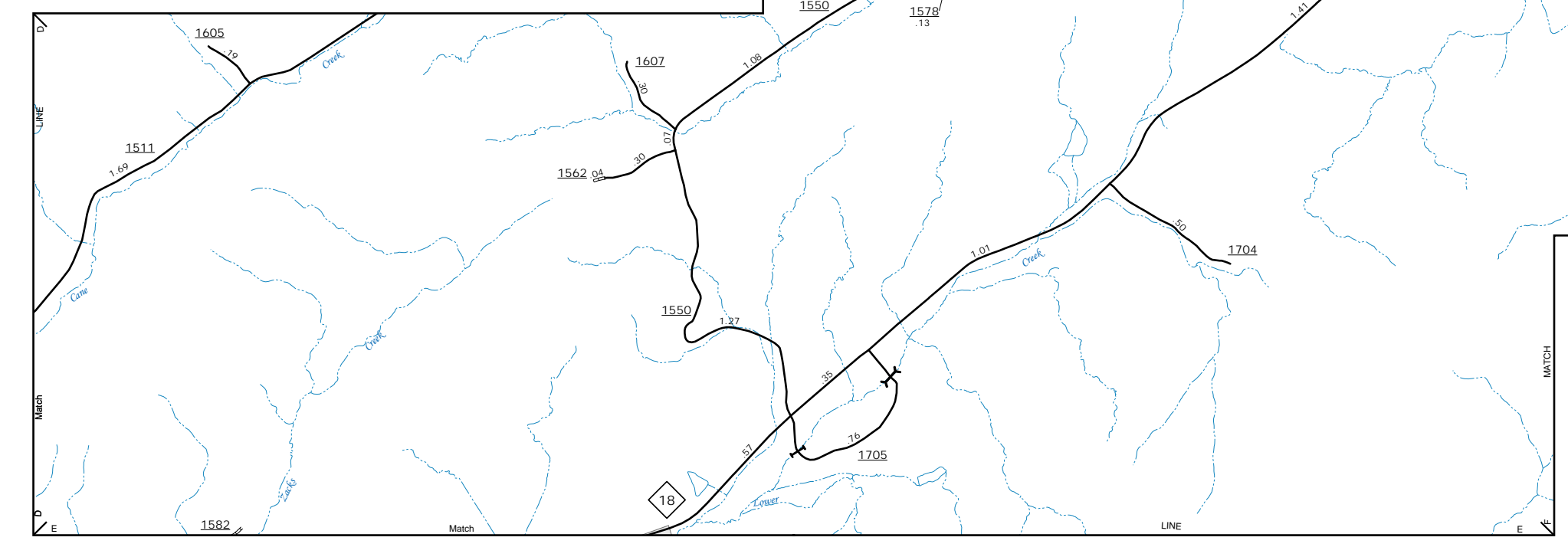
Draco



Legerwood, Patterson & Warrior



Kings Creek

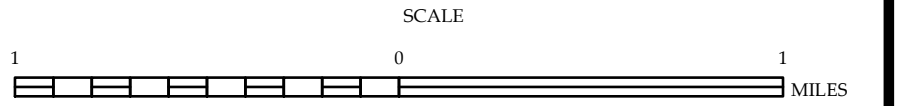


Adako, Collettsville & Hobart



ENLARGED MUNICIPAL AND SUBURBAN AREAS  
**CALDWELL COUNTY**  
NORTH CAROLINA

PREPARED BY THE  
NORTH CAROLINA DEPARTMENT OF TRANSPORTATION  
OPERATIONS PROGRAM MANAGEMENT UNIT - MAPPING SECTION  
IN COOPERATION WITH THE  
U.S. DEPARTMENT OF TRANSPORTATION  
FEDERAL HIGHWAY ADMINISTRATION



10,000 FOOT GRID BASED ON NORTH CAROLINA PLANE COORDINATE SYSTEM  
LAMBERT CONFORMAL CONIC PROJECTION