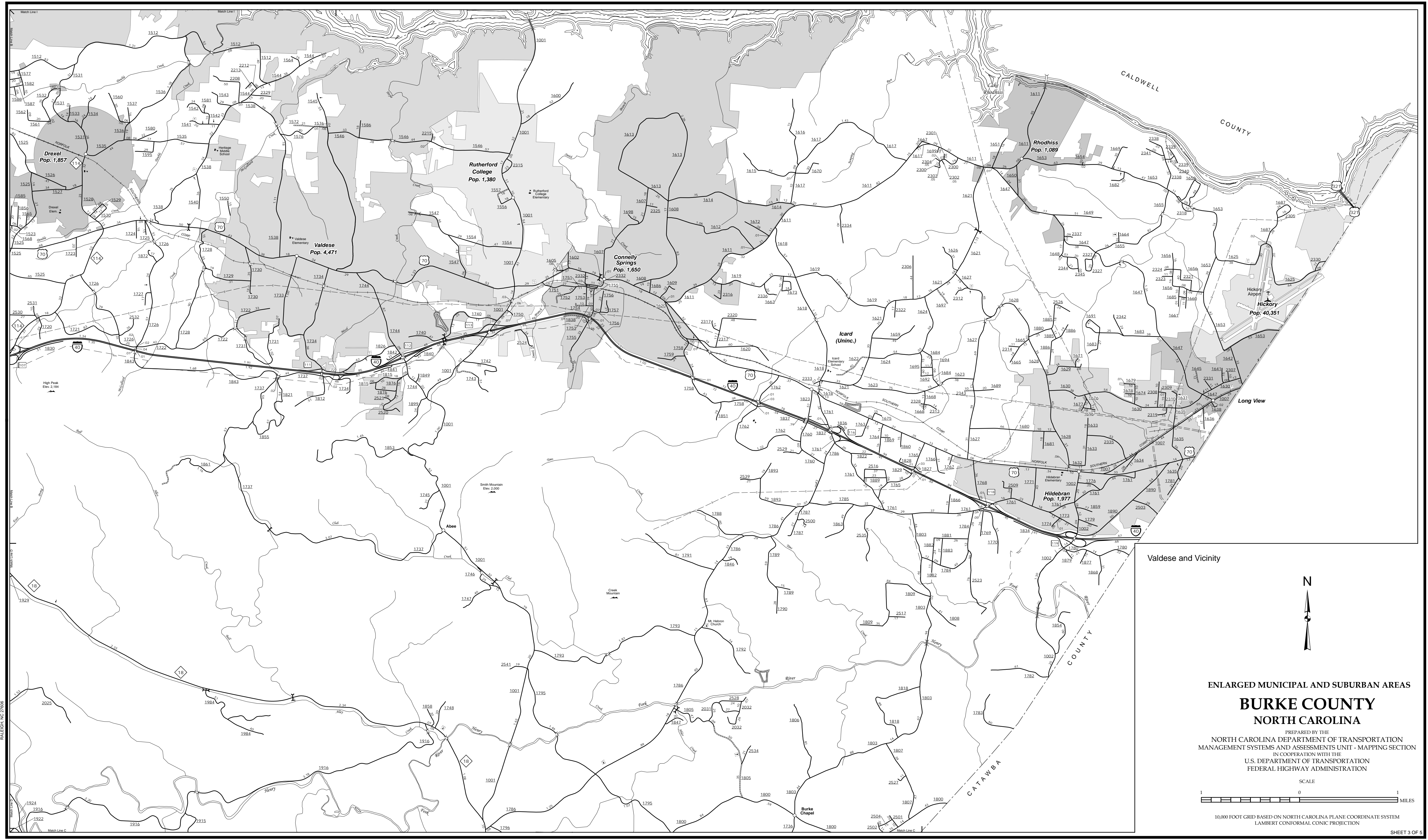


The Mapping Section's goal is to provide the most accurate and current information possible. Map data is compiled from various sources and is not a guarantee of accuracy. The information is provided as a service to the public and is not intended to be used for any purpose other than that for which it was intended. As a result, the user assumes all responsibility for any errors or omissions. For additional information, visit <http://www.ncdot.gov/transportation/mapping> and click on Data Providers or contact us by phone at (919) 855-8480.

COPIES OF THIS MAP ARE AVAILABLE TO THE PUBLIC AT NOMINAL COST. ADDRESS: N.C. DEPARTMENT OF TRANSPORTATION, MAU-MAPPING SECTION, 4809 BERRY LANE, RALEIGH, NC 27606



Valdese and Vicinity

ENLARGED MUNICIPAL AND SUBURBAN AREAS  
**BURKE COUNTY**  
NORTH CAROLINA  
PREPARED BY THE  
NORTH CAROLINA DEPARTMENT OF TRANSPORTATION  
MANAGEMENT SYSTEMS AND ASSESSMENTS UNIT - MAPPING SECTION  
IN COOPERATION WITH THE  
U.S. DEPARTMENT OF TRANSPORTATION  
FEDERAL HIGHWAY ADMINISTRATION

SCALE  
1 0 1 MILES

10,000 FOOT GRID BASED ON NORTH CAROLINA PLANE COORDINATE SYSTEM  
LAMBERT CONFORMAL CONIC PROJECTION