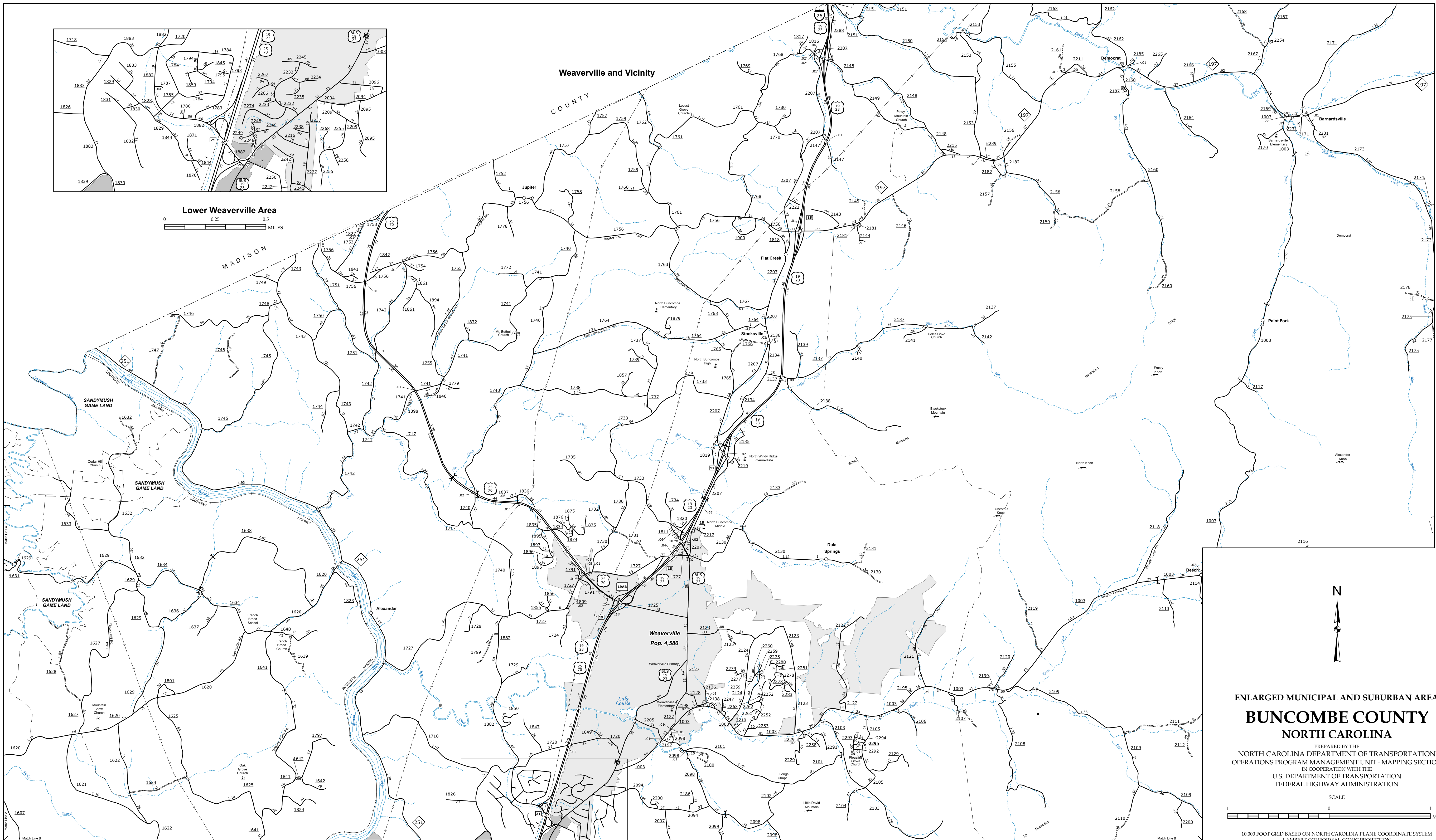


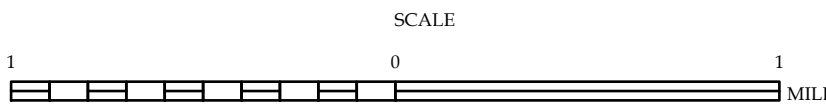
The Mapping Section's goal is to provide the most accurate and current information possible. Map data is compiled from numerous sources and is subject to change without notice. The mapping data is not intended to be used for any purpose other than general information. For more information, please contact the Mapping Section at (919) 835-8480. For additional information, visit <http://www.ncdot.gov/transportation/operations/program-management/unit-mapping-section/> and click on Data Providers or contact us by phone at (919) 835-8480.

COPIES OF THIS MAP ARE AVAILABLE TO THE PUBLIC AT NOMINAL COST. ADDRESS: NORTH CAROLINA DEPARTMENT OF TRANSPORTATION OPERATIONS PROGRAM MANAGEMENT UNIT - MAPPING SECTION 4809 BERNI RD. FAYETTEVILLE, NC 28408



ENLARGED MUNICIPAL AND SUBURBAN AREAS  
**BUNCOMBE COUNTY**  
**NORTH CAROLINA**

PREPARED BY THE  
NORTH CAROLINA DEPARTMENT OF TRANSPORTATION  
OPERATIONS PROGRAM MANAGEMENT UNIT - MAPPING SECTION  
IN COOPERATION WITH THE  
U.S. DEPARTMENT OF TRANSPORTATION  
FEDERAL HIGHWAY ADMINISTRATION



10,000 FOOT GRID BASED ON NORTH CAROLINA PLANE COORDINATE SYSTEM  
LAMBERT CONFORMAL CONIC PROJECTION