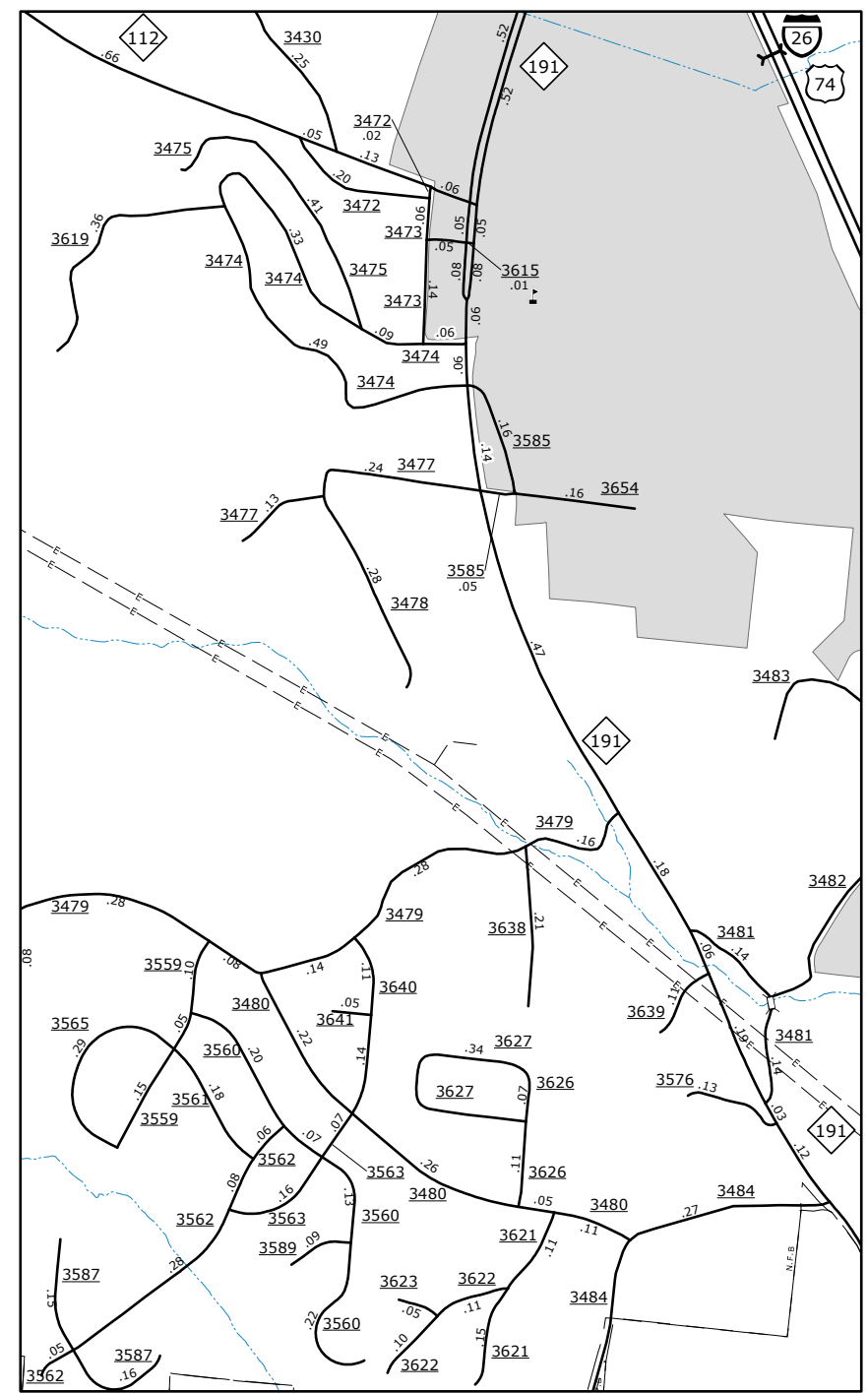
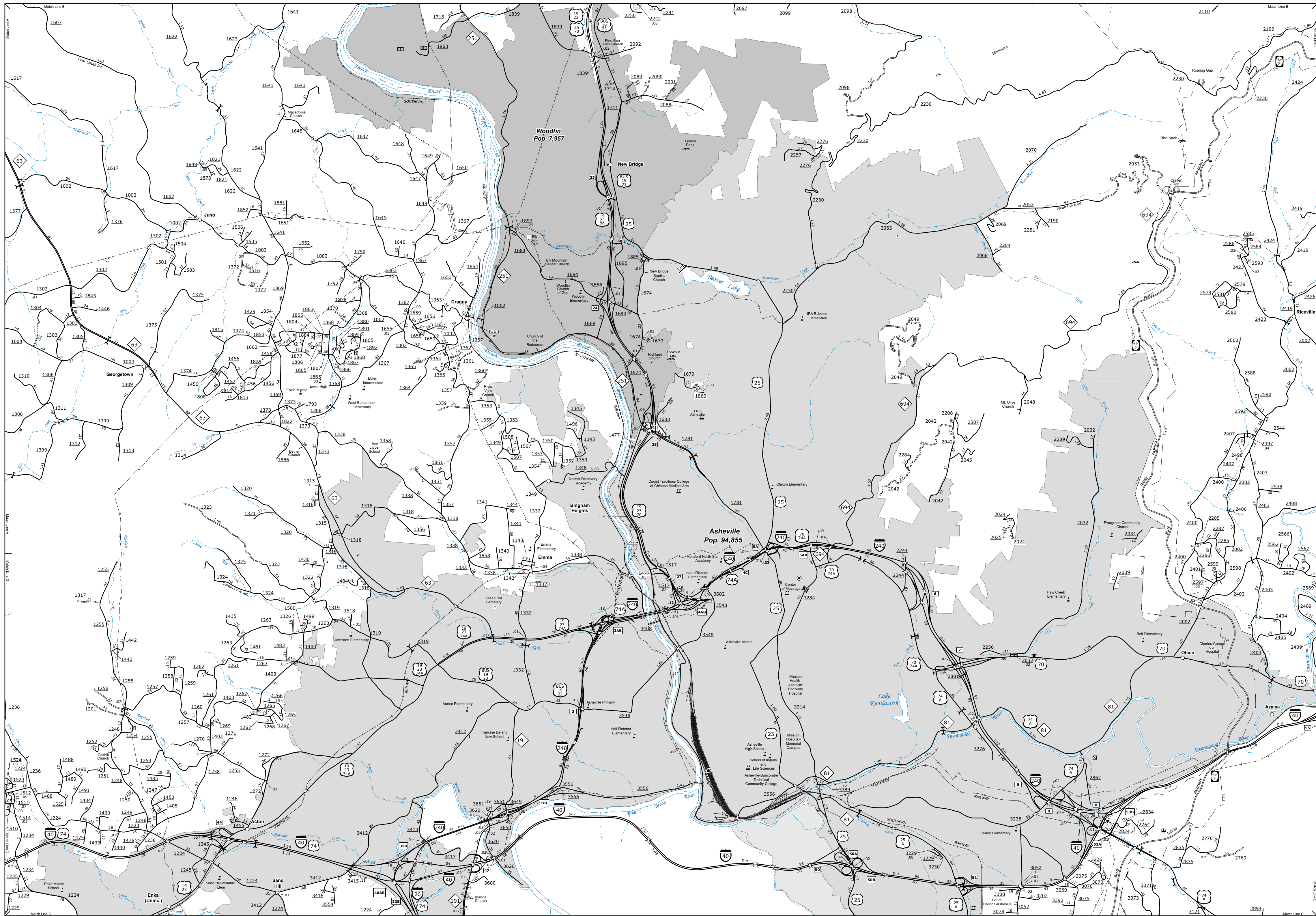


The Mapping Section's goal is to provide the most accurate and current information possible. Map data is compiled from numerous sources including aerial photography, ground surveys, and other reliable sources. While every effort is made to ensure the accuracy of the information, the user assumes all responsibility for its use. For additional information, visit <http://www.ncdot.gov/transportation/mapping> and click on Data Providers or contact us by phone at (919) 835-8480.

COPIES OF THIS MAP ARE AVAILABLE  
FOR PURCHASE AT A PUBLIC UTILITY  
ADDRESS  
N.C. DEPARTMENT OF TRANSPORTATION  
MSAU-MAPPING SECTION  
4800 BERNI RD.  
RALEIGH, NC 27609



NC 112 & NC 191 Area  
0 0.25 0.5  
MILES

Asheville and Vicinity



ENLARGED MUNICIPAL AND SUBURBAN AREAS  
**BUNCOMBE COUNTY**  
NORTH CAROLINA

PREPARED BY THE  
NORTH CAROLINA DEPARTMENT OF TRANSPORTATION  
OPERATIONS PROGRAM MANAGEMENT UNIT - MAPPING SECTION  
IN COOPERATION WITH THE  
U.S. DEPARTMENT OF TRANSPORTATION  
FEDERAL HIGHWAY ADMINISTRATION

SCALE  
1 0 1  
MILES

10,000 FOOT GRID BASED ON NORTH CAROLINA PLANE COORDINATE SYSTEM  
LAMBERT CONFORMAL CONIC PROJECTION

SHEET 2 OF 7