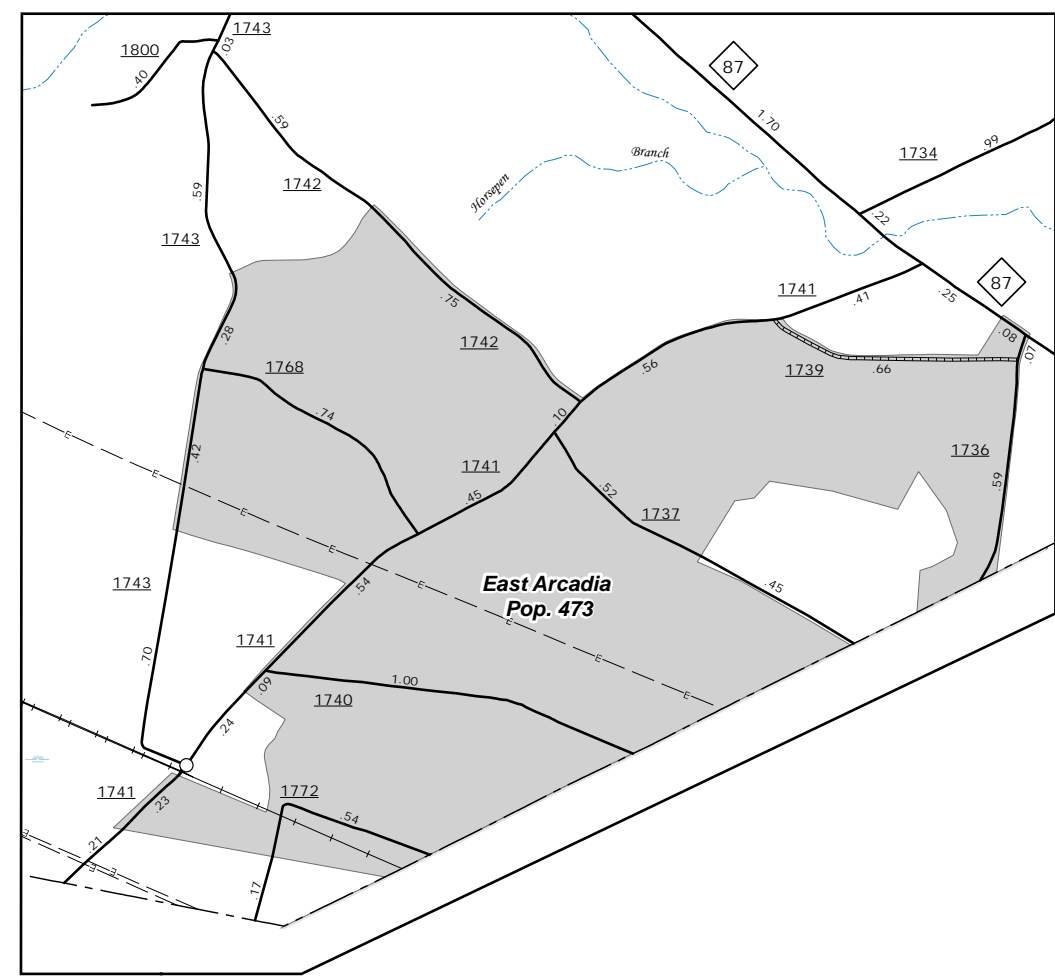
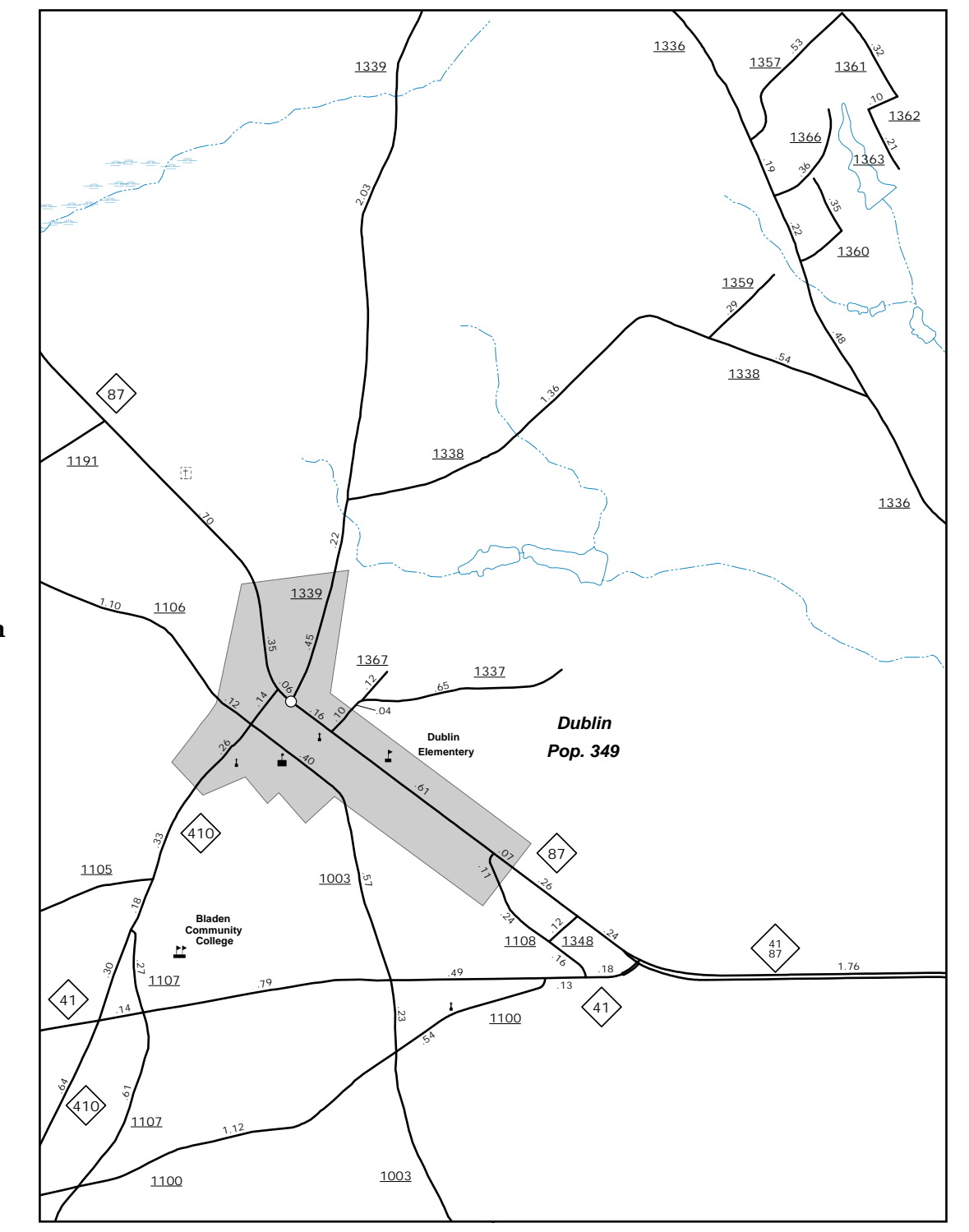


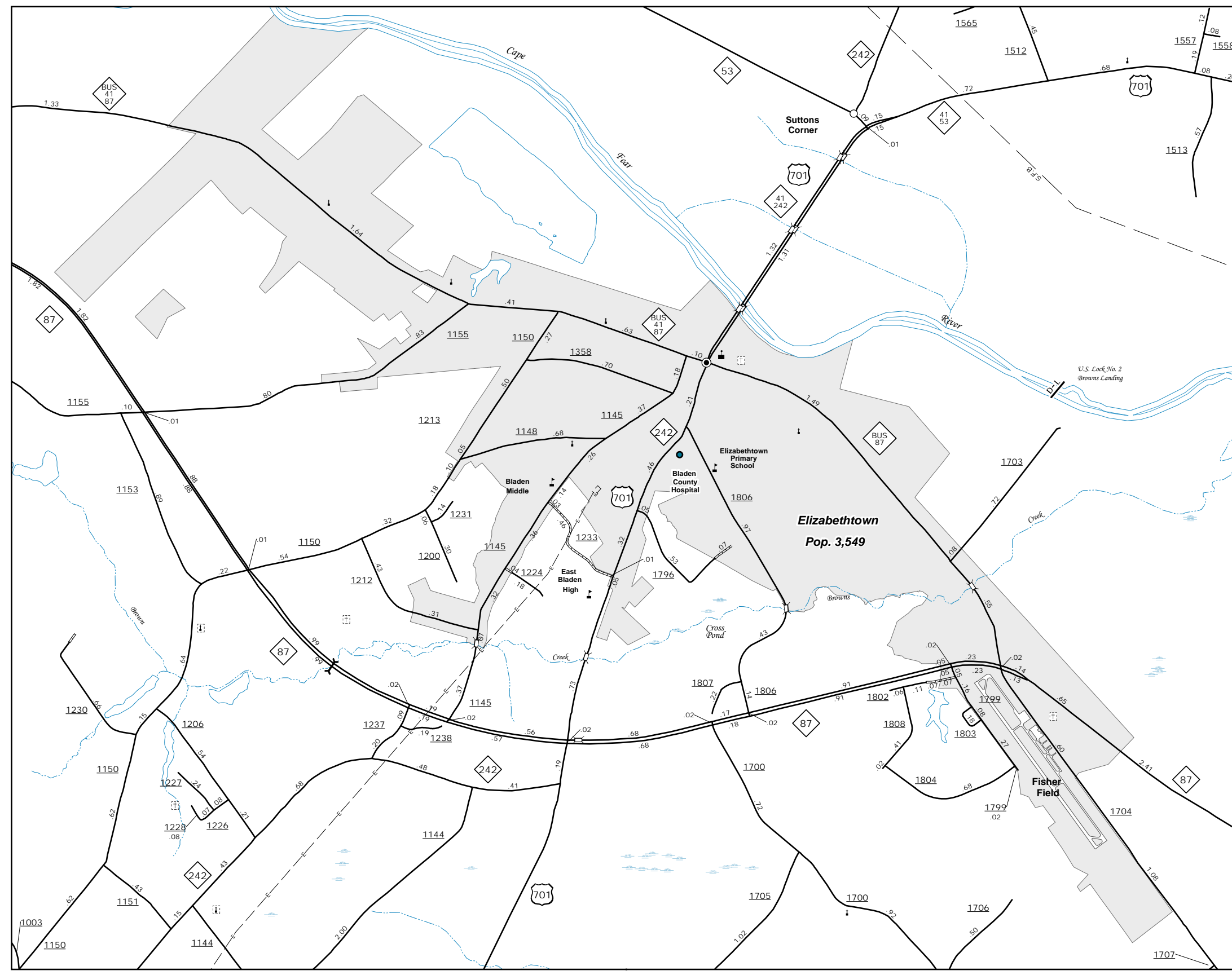
Clarkton  
Pop. 812



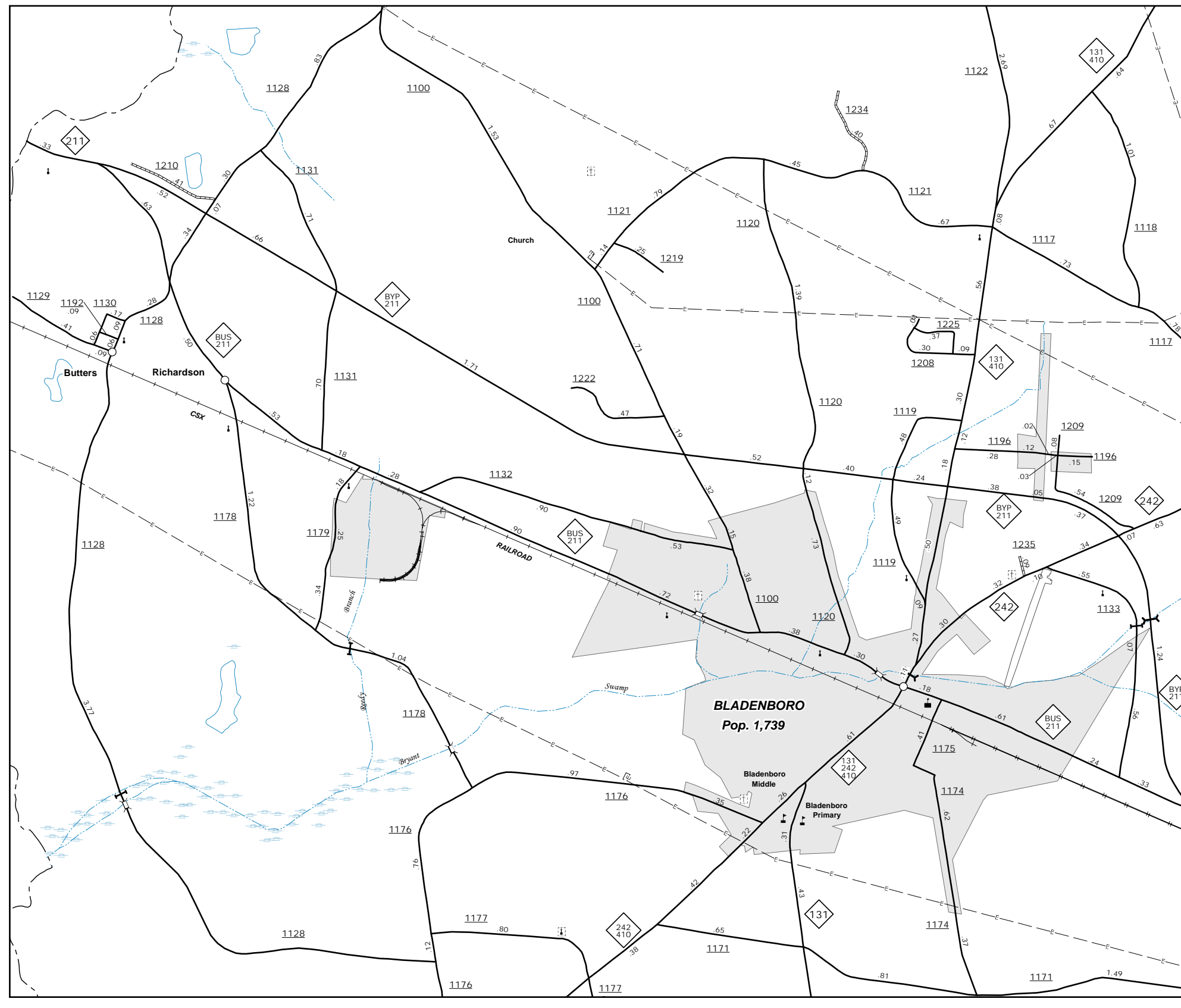
East Arcadia  
Pop. 473



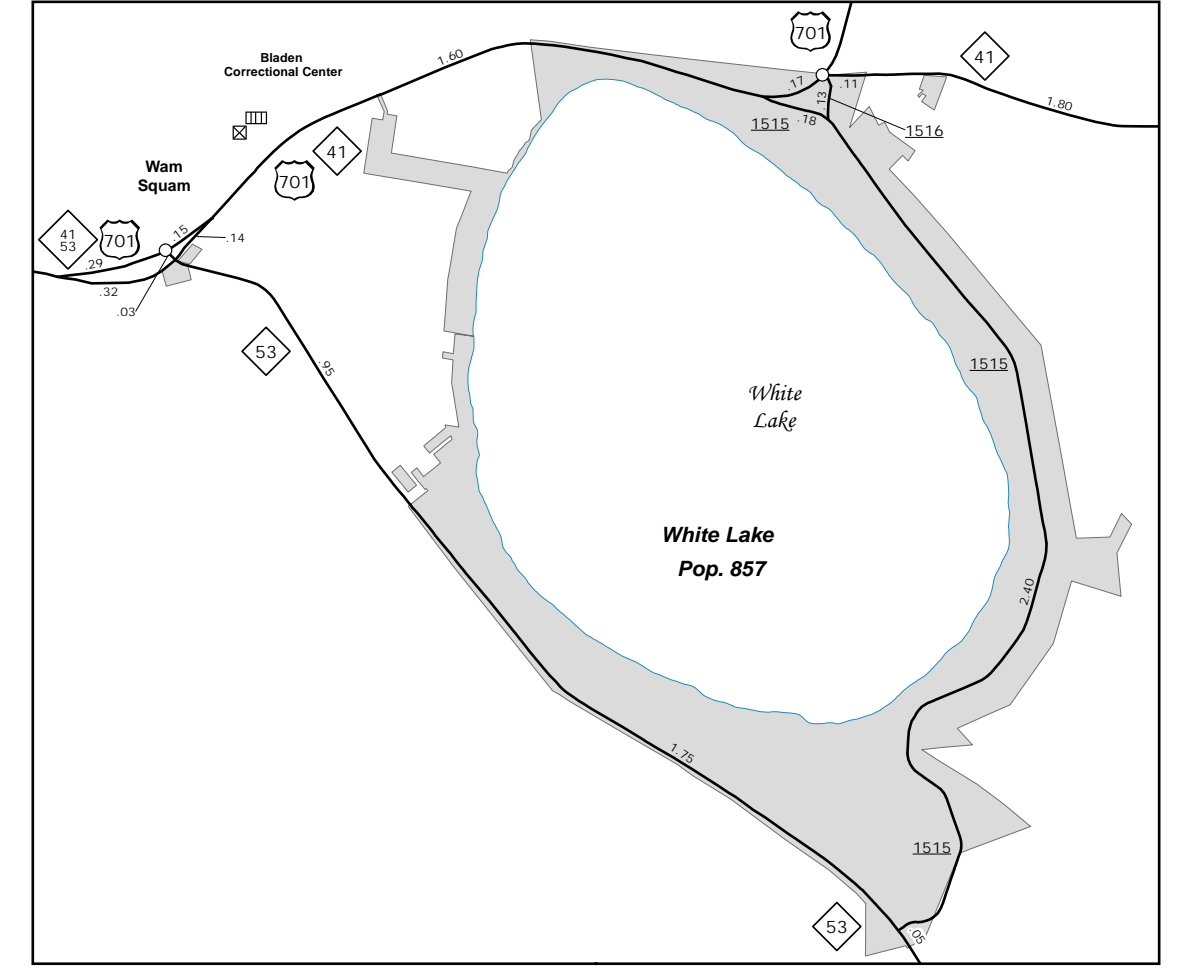
Dublin  
Pop. 349



Elizabethtown  
Pop. 3,549



Bladenboro  
Pop. 1,739



White Lake  
Pop. 857

The Mapping Section's goal is to provide the most accurate and current information possible. Map data is compiled from various sources including aerial photography, ground surveys, and other data. The Mapping Section is responsible for the accuracy and completeness of the data. For additional information, visit <http://www.ncdot.gov/transportation/mapping> and click on Data Providers or contact us by phone at (919) 855-8480.

COPIES OF THIS MAP ARE AVAILABLE FOR PURCHASE AT A PUBLIC UTILITY COST. ADDRESS: N.C. DEPARTMENT OF TRANSPORTATION, MAPPING SECTION, 4001 BERNI LANE, RALEIGH, NC 27606



**White Lake**  
**ENLARGED MUNICIPAL AND SUBURBAN AREAS**  
**BLADEN COUNTY**  
**NORTH CAROLINA**  
 PREPARED BY THE  
 NORTH CAROLINA DEPARTMENT OF TRANSPORTATION  
 MANAGEMENT SYSTEMS AND ASSESSMENTS UNIT - MAPPING SECTION  
 IN COOPERATION WITH THE  
 U.S. DEPARTMENT OF TRANSPORTATION  
 FEDERAL HIGHWAY ADMINISTRATION  
 SCALE  
  
 10,000 FOOT GRID BASED ON NORTH CAROLINA PLANE COORDINATE SYSTEM  
 LAMBERT CONFORMAL CONIC PROJECTION