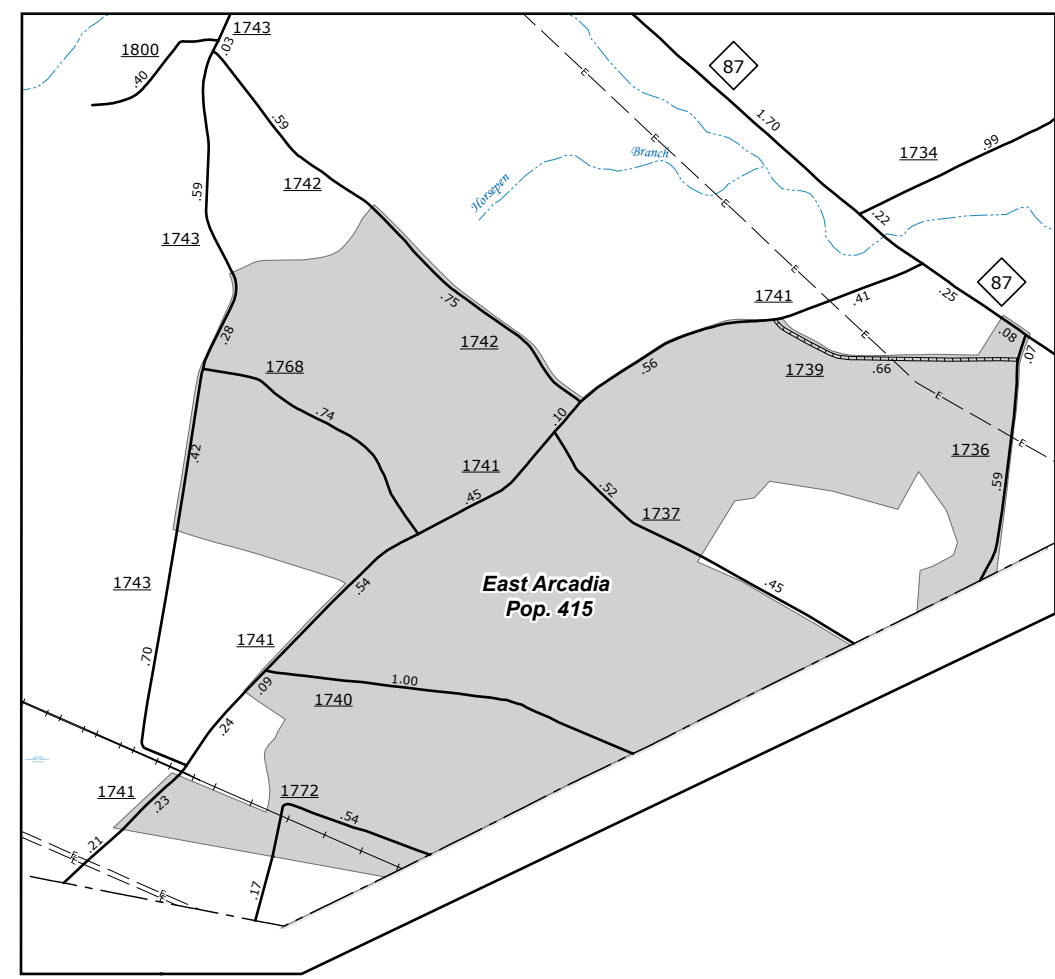
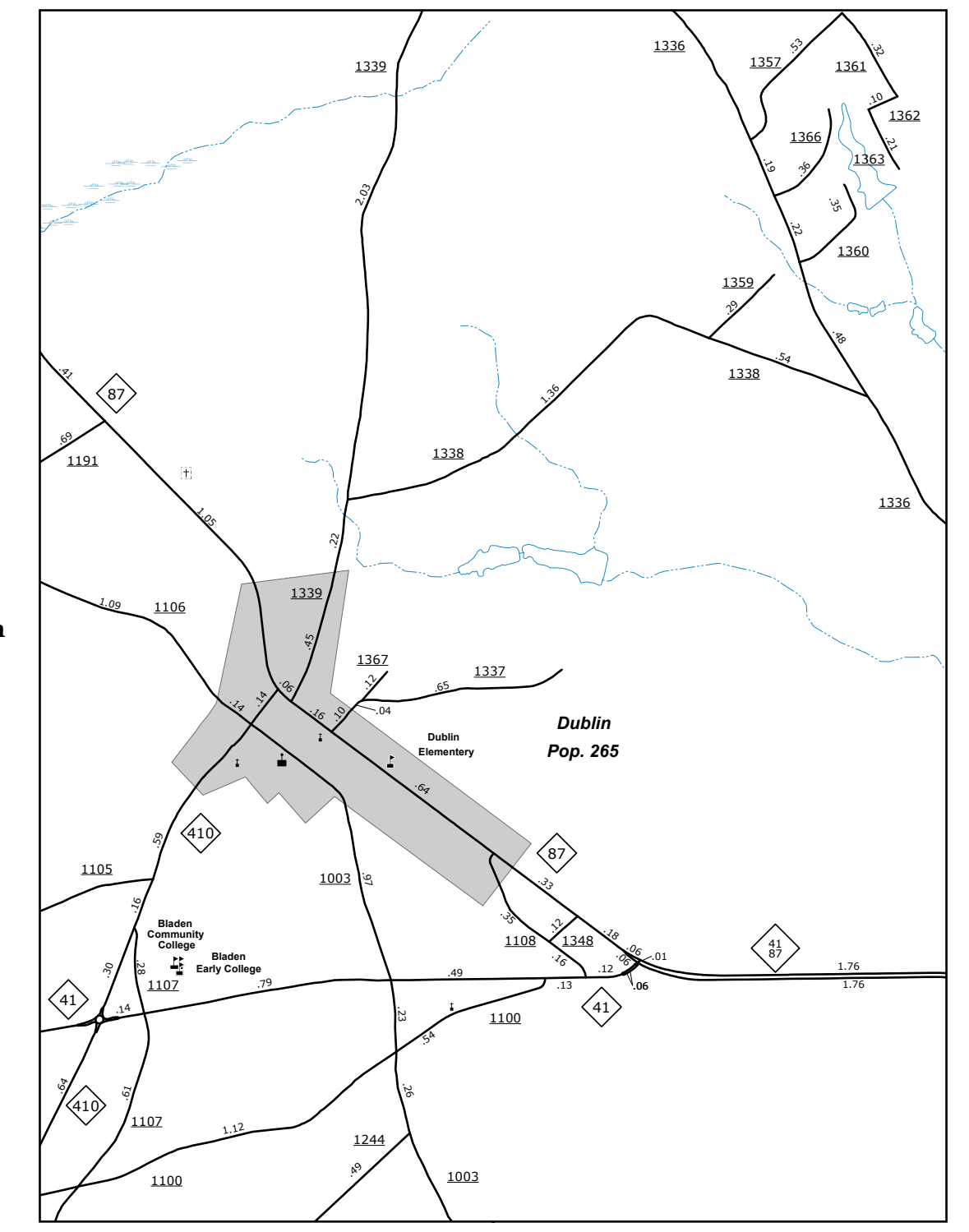


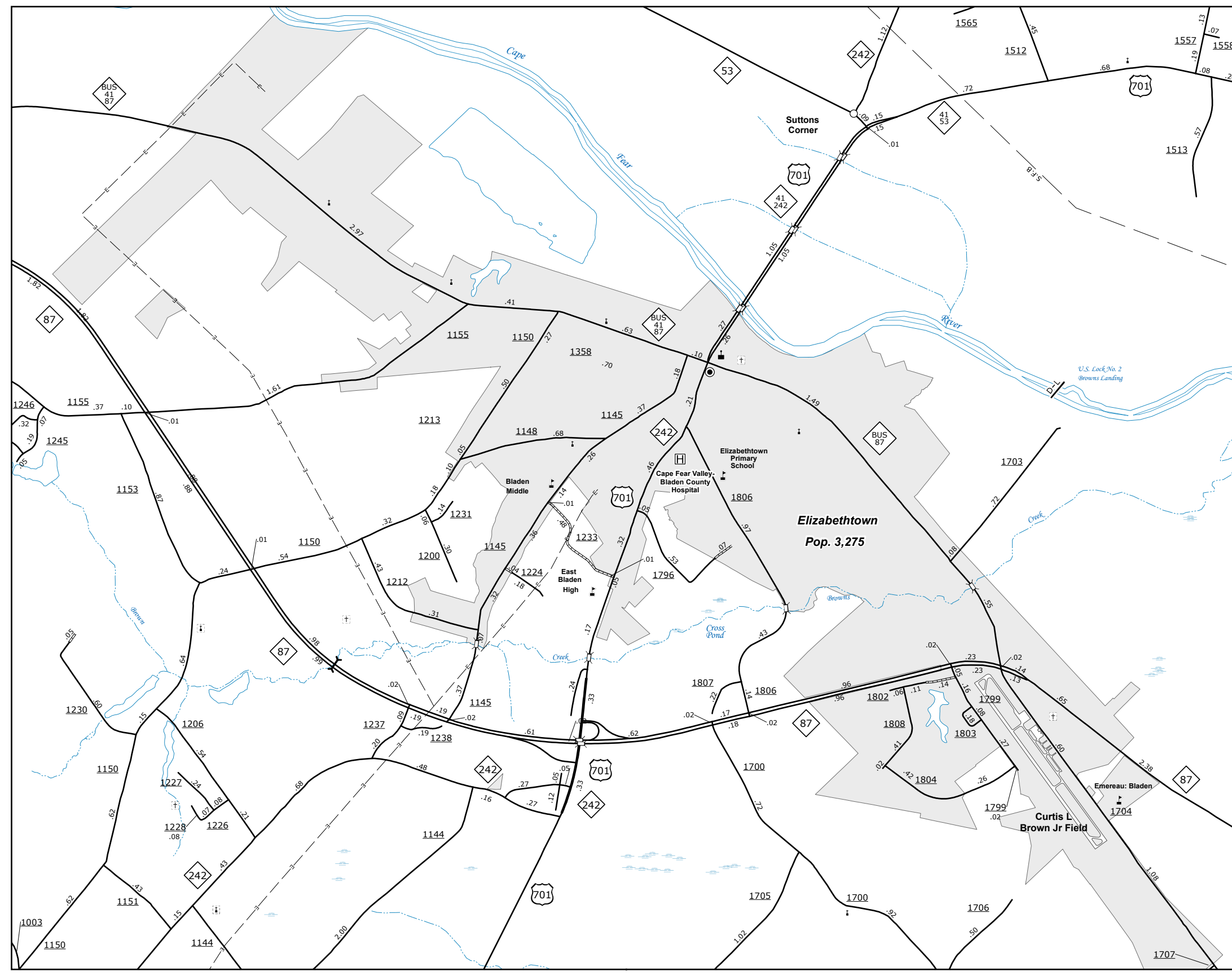
Clarkton
Pop. 610



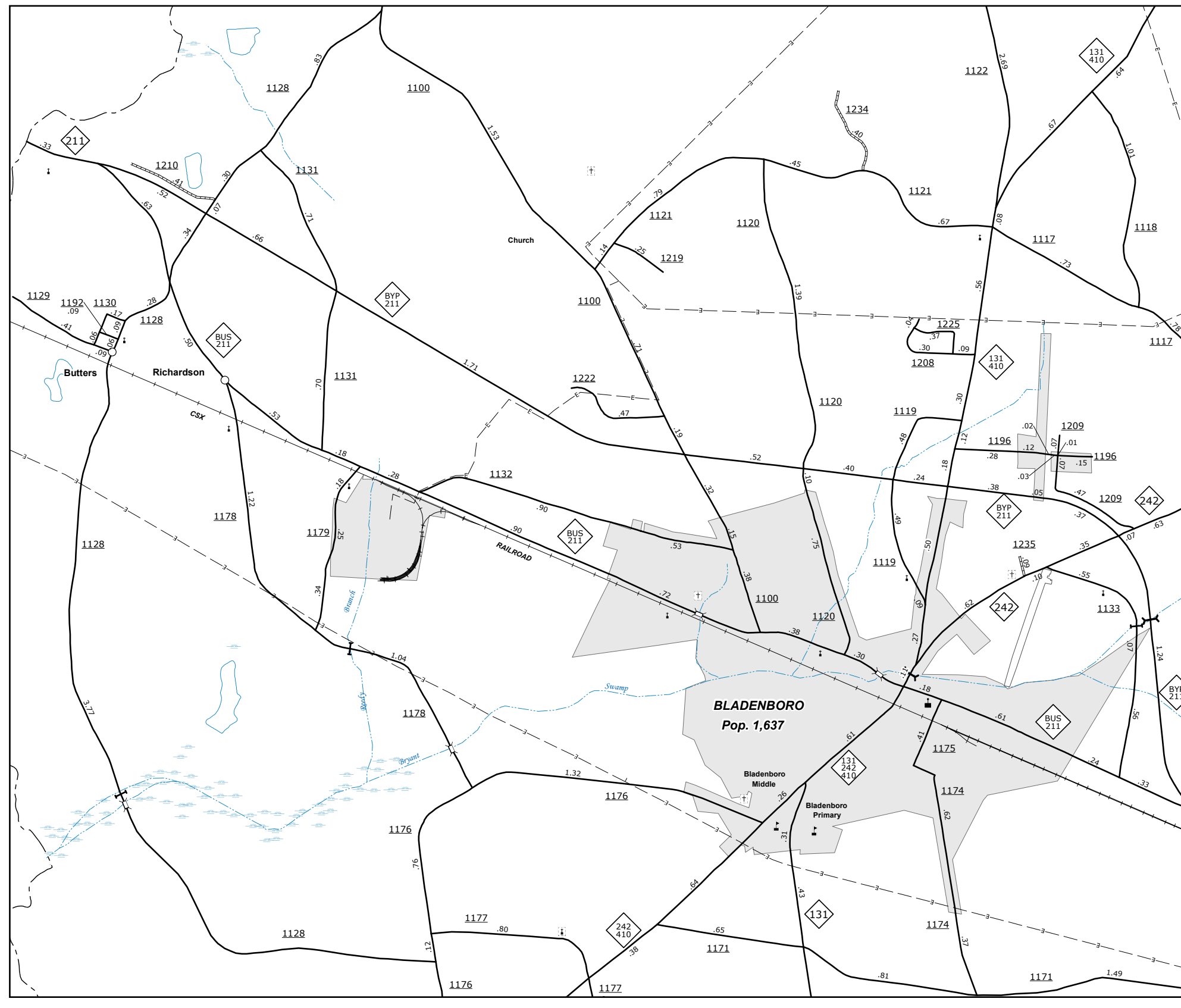
East Arcadia
Pop. 415



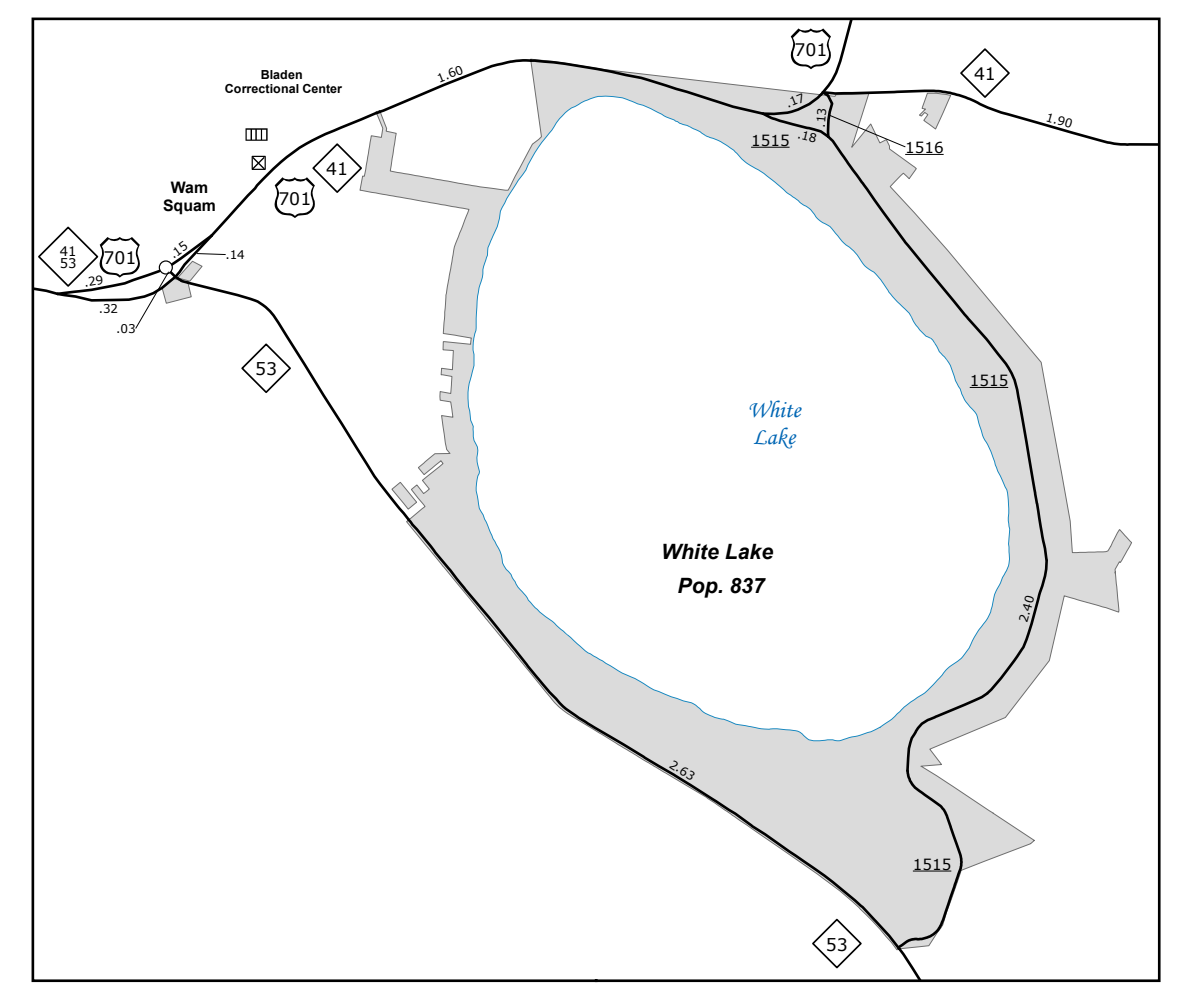
Dublin
Pop. 265



Elizabethtown
Pop. 3,275



Bladenboro
Pop. 1,637



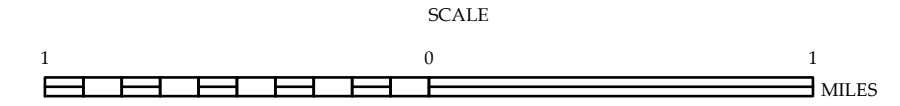
White Lake
Pop. 837

The Mapping Section's goal is to provide the most accurate and current information possible. Map data is compiled from various sources and is not guaranteed to be 100% accurate. The accuracy of the data is dependent on the accuracy of the data provided to the Mapping Section. The Mapping Section is not responsible for any errors or omissions in the data. For more information, visit www.nc.gov or call the Mapping Section at (919) 835-8480.

COPIES OF THIS MAP ARE AVAILABLE FROM THE N.C. DEPARTMENT OF TRANSPORTATION, ADDRESS MAPPING SECTION, 6899 BERRY RD, RALEIGH, NC 27695



ENLARGED MUNICIPAL AND SUBURBAN AREAS
BLADEN COUNTY
 NORTH CAROLINA
 PREPARED BY THE
 NORTH CAROLINA DEPARTMENT OF TRANSPORTATION
 OPERATIONS PROGRAM MANAGEMENT UNIT - MAPPING SECTION
 IN COOPERATION WITH THE
 U.S. DEPARTMENT OF TRANSPORTATION
 FEDERAL HIGHWAY ADMINISTRATION



10,000 FOOT GRID BASED ON NORTH CAROLINA PLANE COORDINATE SYSTEM
 LAMBERT CONFORMAL CONIC PROJECTION