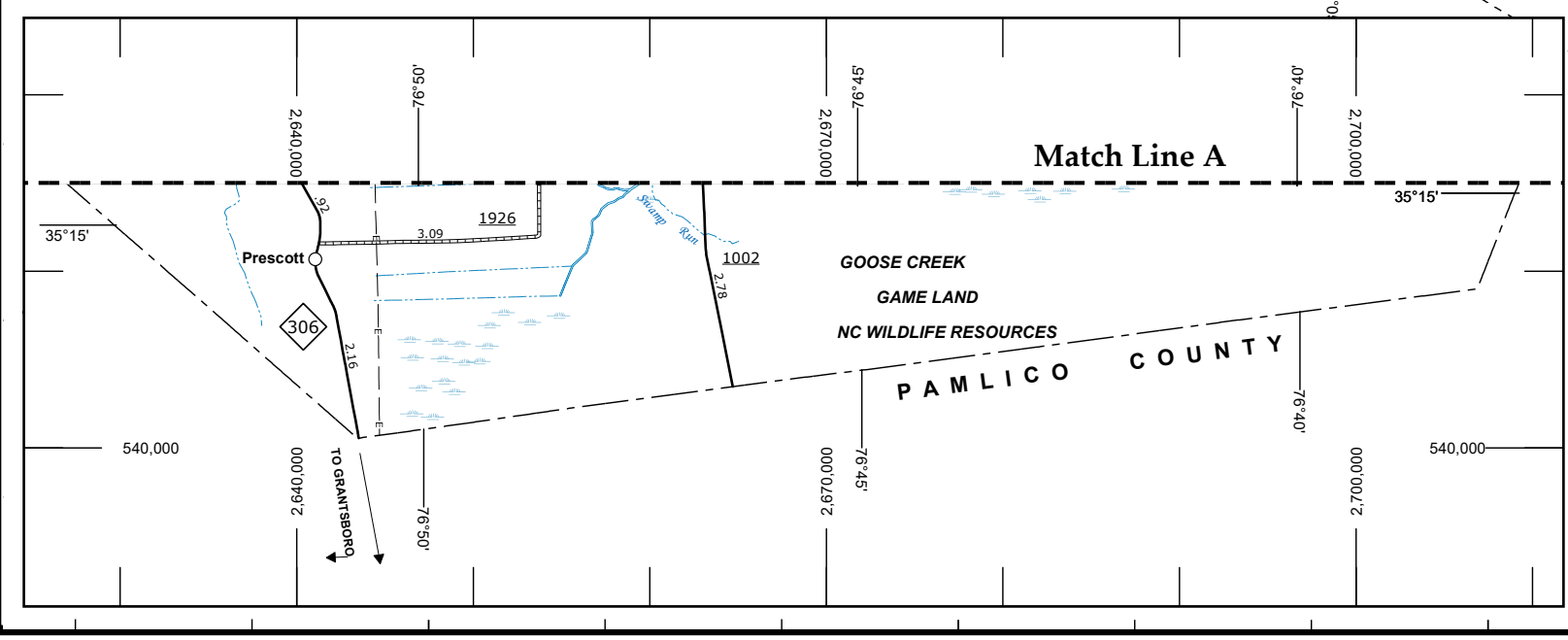


LEGEND

- UNPAVED SURFACED ROAD
- HARD SURFACED ROAD
- NON-SYSTEM ROADS
- DIVIDED HIGHWAY WITH FRONTAGE ROADS
- PROTECTED LOCATION
- BLUE BRIDGE PARKWAY
- INTERSECTION DISTANCE
- TRAFFIC CIRCLE
- DETAILED HIGHWAY INTERCHANGE
- HIGHWAY BRIDGE
- RAILROAD BRIDGE
- DRAW SPAN ON BRIDGE
- PEDESTRIAN WALKWAY
- PEDESTRIAN UNDERPASS
- VEHICULAR UNDERPASS
- FORD
- TUNNEL
- CULVERT
- PIPE
- INTERSTATE HIGHWAY
- U.S. NUMBERED HIGHWAY
- N.C. NUMBERED HIGHWAY
- U.S. NUMBERED BICYCLE ROUTE
- N.C. NUMBERED BICYCLE ROUTE
- INTERSTATE INTERCHANGE NUMBER
- SECONDARY ROAD NUMBER
- UTILITY LINES
- RAILROAD
- RAILROAD STATION
- GRADE CROSSING
- INSET AREA
- NATIONAL FOREST BOUNDARY
- RESERVATION OR PARK BOUNDARY
- STATE FOREST BOUNDARY
- STATE GAMELAND BOUNDARY
- FEDERAL GAMELAND BOUNDARY
- MILITARY RESERVATION BOUNDARY
- STATE LINE
- COUNTY LINE
- CITY LIMIT
- FERRY ROUTE
- NARROW CREEK OR STREAM
- WIDE RIVER OR CREEK
- RESERVOIR, POND OR LAKE W/ ISLAND
- DAM OR DAM WITH LOCK
- WATERFALL
- SWAMP
- COMMUNITY, TOWN OR CITY CENTER
- COUNTY SEAT
- STATE CAPITAL
- SCHOOL
- COLLEGE OR UNIVERSITY
- HOSPITAL
- COAST GUARD STATION
- CHURCH
- CHURCH WITH CEMETERY
- CEMETERY
- PATROL STATION
- CORRECTION OR PENAL INSTITUTION
- QUARRY
- MINI OR PIT
- HIGHWAY GARAGE OR MAINT. YARD
- HIGHWAY DRV. OR DIST. OFFICE
- MILITARY POST
- WILDLIFE REFUGE
- WEIGH STATION
- FAIRGROUNDS
- HISTORICAL SITE
- POINTS OF INTEREST
- STATE FOREST
- LIGHTHOUSE
- MOUNTAIN SUMMIT
- OVERLOOK
- CRESTIC MARKER
- BEST AREA
- VISITOR CTR/REST AREA
- WELCOME CTR/REST AREA
- AIRPORT
- MILITARY AIRPORT
- HELIPORT

The Mapping Section's goal is to provide the most accurate and current information possible. Map data is compiled from various sources including aerial photography, ground surveys, and other data. This map is for informational purposes only and does not constitute a warranty of any kind. The user assumes all responsibility for the use of this map. For more information, visit www.ncdot.gov or call 1-800-368-6848.

COPIES OF THIS MAP ARE AVAILABLE FOR PURCHASE AT A PUBLIC INFORMATION COST. ADDRESS: N.C. DEPARTMENT OF TRANSPORTATION, MSAU-MAPPING SECTION, 4801 BERNI, CO., CARRBORO, NC 27513



BEAUFORT COUNTY NORTH CAROLINA

PREPARED BY THE
NORTH CAROLINA DEPARTMENT OF TRANSPORTATION
OPERATIONS PROGRAM MANAGEMENT UNIT - MAPPING SECTION
IN COOPERATION WITH THE
U.S. DEPARTMENT OF TRANSPORTATION
FEDERAL HIGHWAY ADMINISTRATION

SCALE

0 1 2 3 4
MILES

10,000 FOOT GRID BASED ON NORTH CAROLINA PLANE COORDINATE SYSTEM
LAMBERT CONFORMAL CONIC PROJECTION

