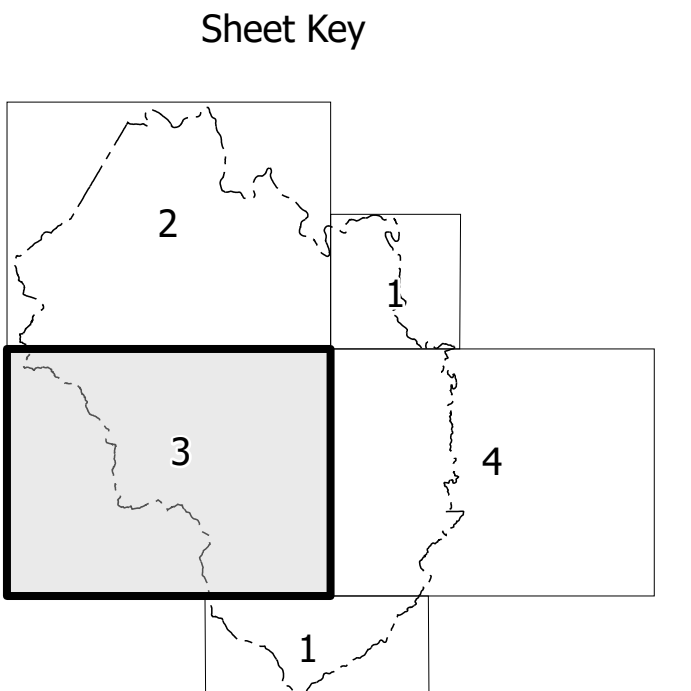
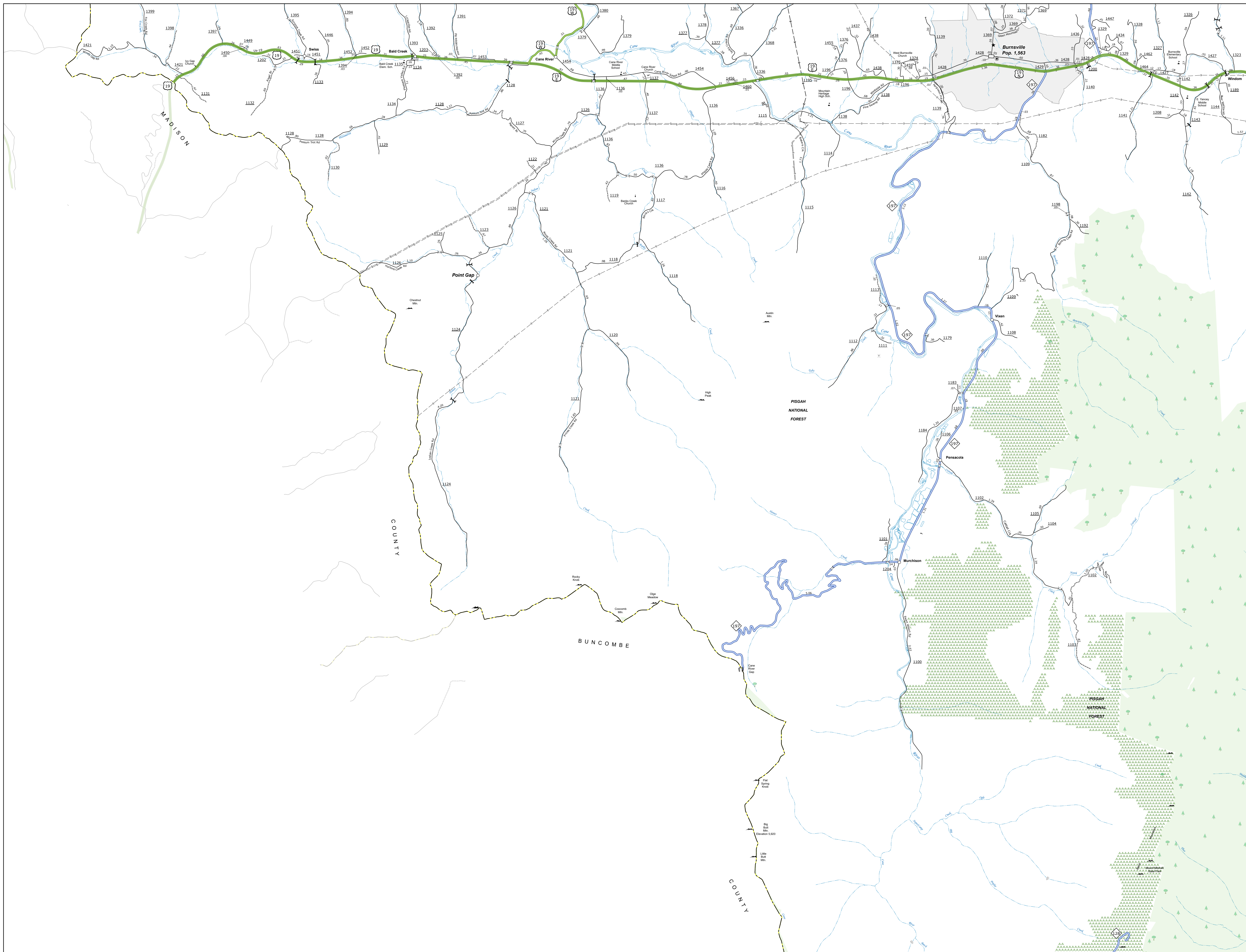


COPIES OF THIS MAP ARE AVAILABLE TO THE PUBLIC AT THE YANCEY COUNTY COURTHOUSE, 100 N. MARKET STREET, YANCEYVILLE, NC 28784. THE INFORMATION CONTAINED HEREIN IS UNCLASSIFIED EXCEPT WHERE SHOWN OTHERWISE. DATE OF CLASSIFICATION: 10/01/2011. AUTHORITY: 48 CFR 101.116. THE INFORMATION CONTAINED HEREIN IS UNCLASSIFIED EXCEPT WHERE SHOWN OTHERWISE. DATE OF CLASSIFICATION: 10/01/2011. AUTHORITY: 48 CFR 101.116.



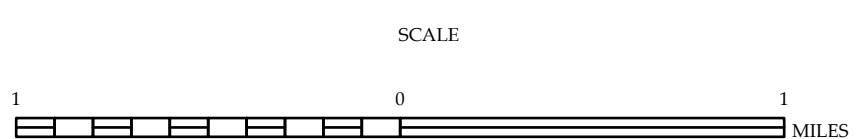
LEGEND

- INTERSTATE US NC
- DIVIDED HWY
- BLUE RIDGE PARKWAY
- UNPAVED SURFACE ROAD
- HARD SURFACE ROAD
- NON-POSTAL ROAD
- PROPOSED/LEGALLY DRAWN ROAD
- FUTURE TRAIL OR PATH
- INTERSECTION DISTANCE
- STANDARD ROAD BRIDGE
- RAILROAD BRIDGE
- DRAWN OVER BRIDGE
- PEDESTRIAN BRIDGE
- PEDESTRIAN WALKWAY
- PEDESTRIAN OVERPASS
- VEHICULAR UNDERPASS
- TUNNEL
- CULVERT
- PIP
- INTERSTATE HIGHWAY
- U.S. NUMBERED HIGHWAY
- N.C. NUMBERED HIGHWAY
- U.S. NUMBERED BI-CYCLE ROUTE
- N.C. NUMBERED BI-CYCLE ROUTE
- INTERSTATE INTERCHANGE NUMBER
- SECONDARY ROAD NUMBER
- HIGHWAY UNDERPASS
- HIGHWAY OVERPASS
- RAILROAD STATION
- RAILROAD LINE
- RAILROAD BRIDGE
- RAILROAD CROSSING
- STATE LINE
- COUNTY LINE
- CITY LIMITS
- UNINCORPORATED SETTLEMENT BOUNDARIES
- CITY LIMITS
- FERRY ROUTE AND RAMP
- NARROW GULCH OR STREAM
- WIDE SWALE OR GULCH
- RESERVOIR, POND OR LAKE W/ ISLAND
- DAM OR DAM WITH LOCK
- NATURAL
- SWAMP
- COMMUNITY
- COUNTY SEAT
- SCHOOL
- COLLEGE OR UNIVERSITY
- HOSPITAL
- GOLF COURSE
- CHURCH
- CHURCH WITH CEMETERY
- CEMETERY
- FISHING STATION
- CORRECTIONAL INSTITUTION
- QUARRY
- MEN OR BIT
- HIGHWAY GARAGE OR MAINT. YARD
- HIGHWAY DEP. OR DIST. OFFICE
- MILITARY POST
- WEIGH STATION
- FARMSTAND
- HISTORICAL SITE
- PUNYA OF INTEREST
- POST OFFICE
- STATE FOREST
- LIGHTHOUSE
- MOUNTAIN GAP
- OVERLOOK
- REST AREA
- STATE REST AREA
- WELL-OID CTREST AREA
- AIRPORT
- MILITARY AIRPORT
- NATIONAL STATE FOREST BOUNDARY
- WILDLIFE REFUGE
- NATIONAL STATE PARK BOUNDARY
- GAME LANDS BOUNDARY
- MILITARY RESERVATION BOUNDARY
- BOKAN RESERVATION BOUNDARY



YANCEY COUNTY NORTH CAROLINA

PREPARED BY THE
NORTH CAROLINA DEPARTMENT OF TRANSPORTATION
OPERATIONS PROGRAM MANAGEMENT UNIT - MAPPING SECTION
IN COOPERATION WITH THE
U.S. DEPARTMENT OF TRANSPORTATION
FEDERAL HIGHWAY ADMINISTRATION



NORTH CAROLINA PLANE COORDINATE SYSTEM
LAMBERT CONFORMAL CONIC PROJECTION