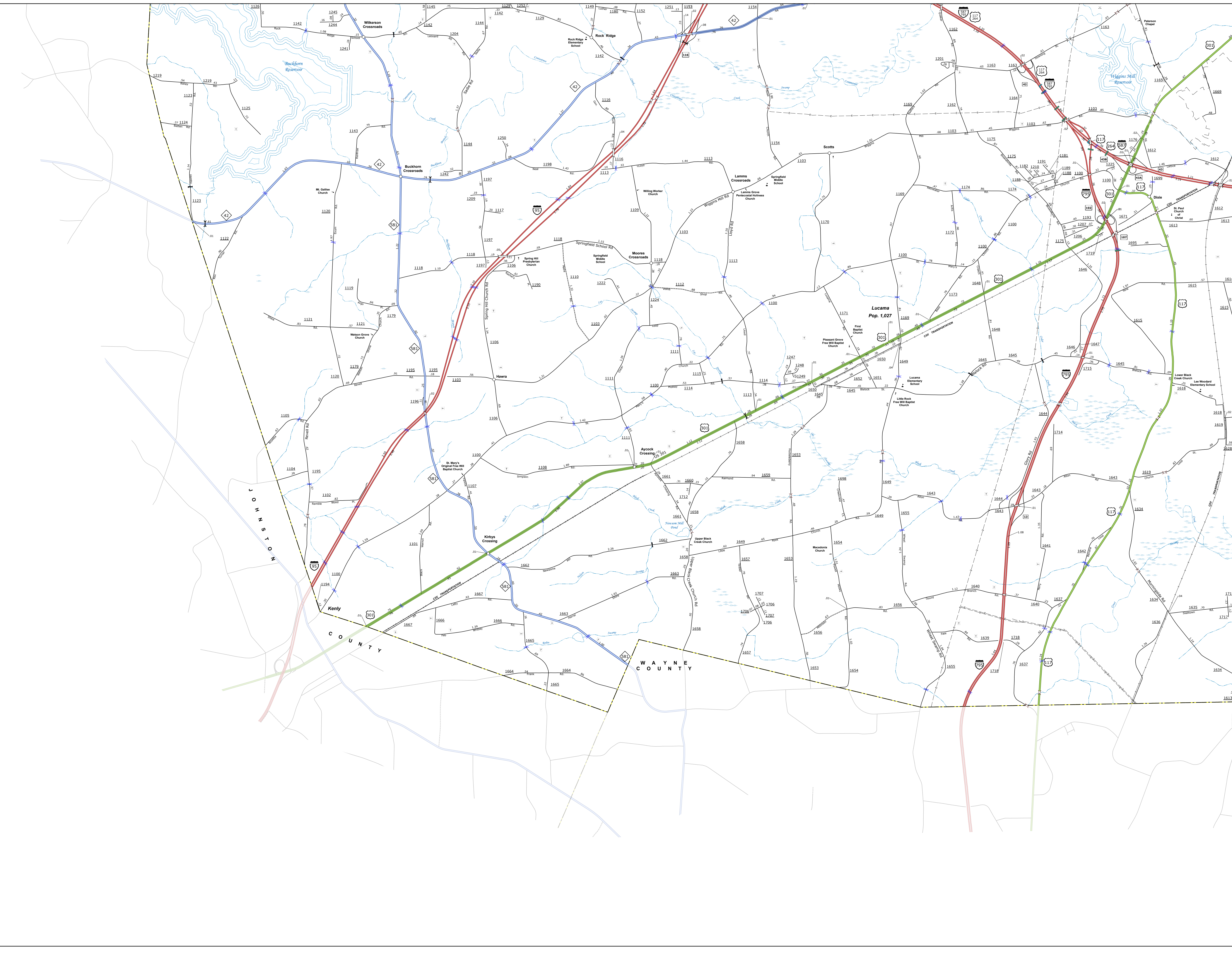
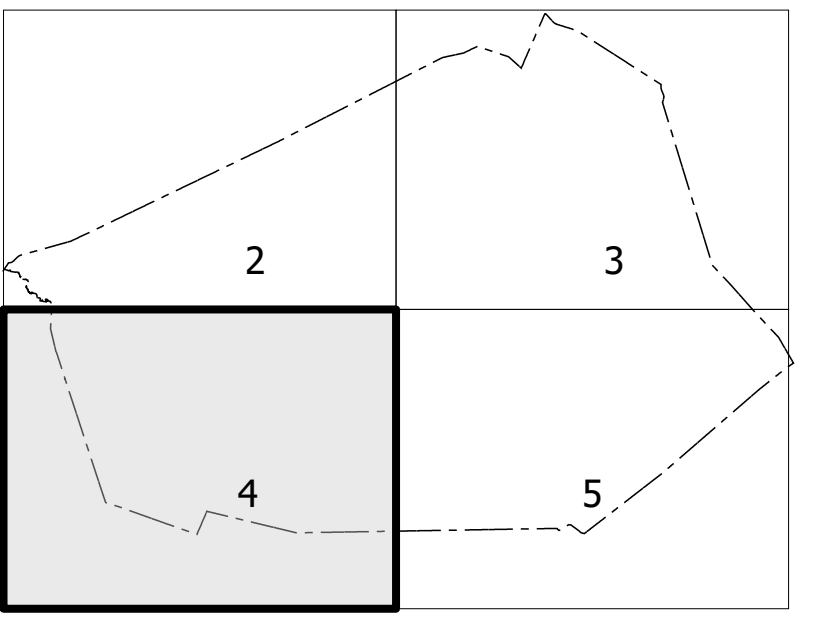


TERMS OF USE: The Mapping Section's goal is to provide the most accurate and current information possible. Map data is compiled from numerous sources with varying degrees of precision and timeliness. As a result, the accuracy, currency, and completeness of this information cannot be guaranteed. The information shown on this map was updated in April 2024. Any map data shown on this map that is not shown on this map cannot be considered to be legal documents. The information shown on this map was updated in April 2024. Any map data shown on this map that is not shown on this map cannot be considered to be legal documents.

COPIES OF THIS MAP ARE AVAILABLE TO THE PUBLIC AT NOMINAL COST. CONTACT US TO ORDER: 919-733-6462



Sheet Key



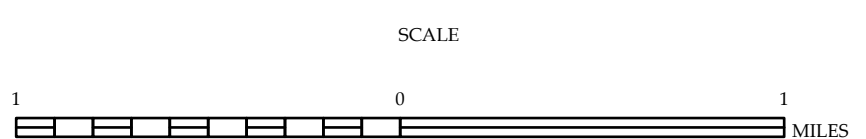
LEGEND

- INTERSTATE US NC
- STATE HIGHWAY US NC
- US NUMBERED HIGHWAY
- NC NUMBERED HIGHWAY
- NC NUMBERED BI-CYCLE ROUTE
- INTERSTATE INTERCHANGE NUMBER
- SECONDARY ROAD NUMBER
- UTILITY LINES
- RAILROAD LINE
- RAILROAD STATION
- RAILROAD CROSSING
- STATE LINE
- COUNTY LINE
- CITY LINE
- FERRY ROUTE
- NARROW CREEK OR STREAM
- WIDE RIVER OR CREEK
- RESERVOIR, POND OR LAKE W/ ISLAND
- DAM OR DAM WITH LAKE
- WATERFALL
- SWAMP
- COMMUNITY TOWN OR CITY CENTER
- COUNTY SEAT
- SCHOOL
- COLLEGE OR UNIVERSITY
- HOSPITAL
- COAST GUARD STATION
- CHURCH
- CHURCH WITH CEMETERY
- CEMETERY
- PARK STATION
- CORRECTION OR PENAL INSTITUTION
- QUARRY
- IN COOPERATION WITH THE
- HIGHWAY GARAGE OR MAINT. YARD
- HIGHWAY DIST. OR DIST. OFFICE
- MILITARY POST
- WATER STATION
- FARGO STATION
- HISTORICAL SITE
- PROPERTY OF INTEREST
- STATE FOREST
- BOOTHING
- MONSIEUR SUMMIT
- REST AREA
- VIEWER CTR REST AREA
- WELCOME CTR REST AREA
- AIRPORT
- MILITARY AIRPORT
- FIELD POST
- NATIONAL STATE FOREST BOUNDARY
- WILDLIFE REFUGE
- IN COOPERATION WITH THE
- NATIONAL STATE PARK BOUNDARY
- GAME LANDS BOUNDARY
- MILITARY RESERVATION BOUNDARY
- INDIAN RESERVATION BOUNDARY



WILSON COUNTY  
NORTH CAROLINA

PREPARED BY THE  
NORTH CAROLINA DEPARTMENT OF TRANSPORTATION  
OPERATIONS PROGRAM MANAGEMENT UNIT - MAPPING SECTION  
IN COOPERATION WITH THE  
U.S. DEPARTMENT OF TRANSPORTATION  
FEDERAL HIGHWAY ADMINISTRATION



SCALE  
NORTH CAROLINA PLANE COORDINATE SYSTEM  
LAMBERT CONFORMAL CONIC PROJECTION