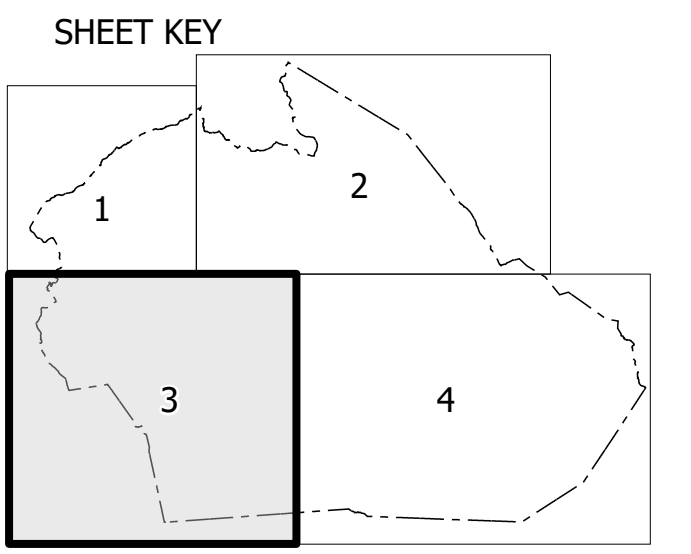
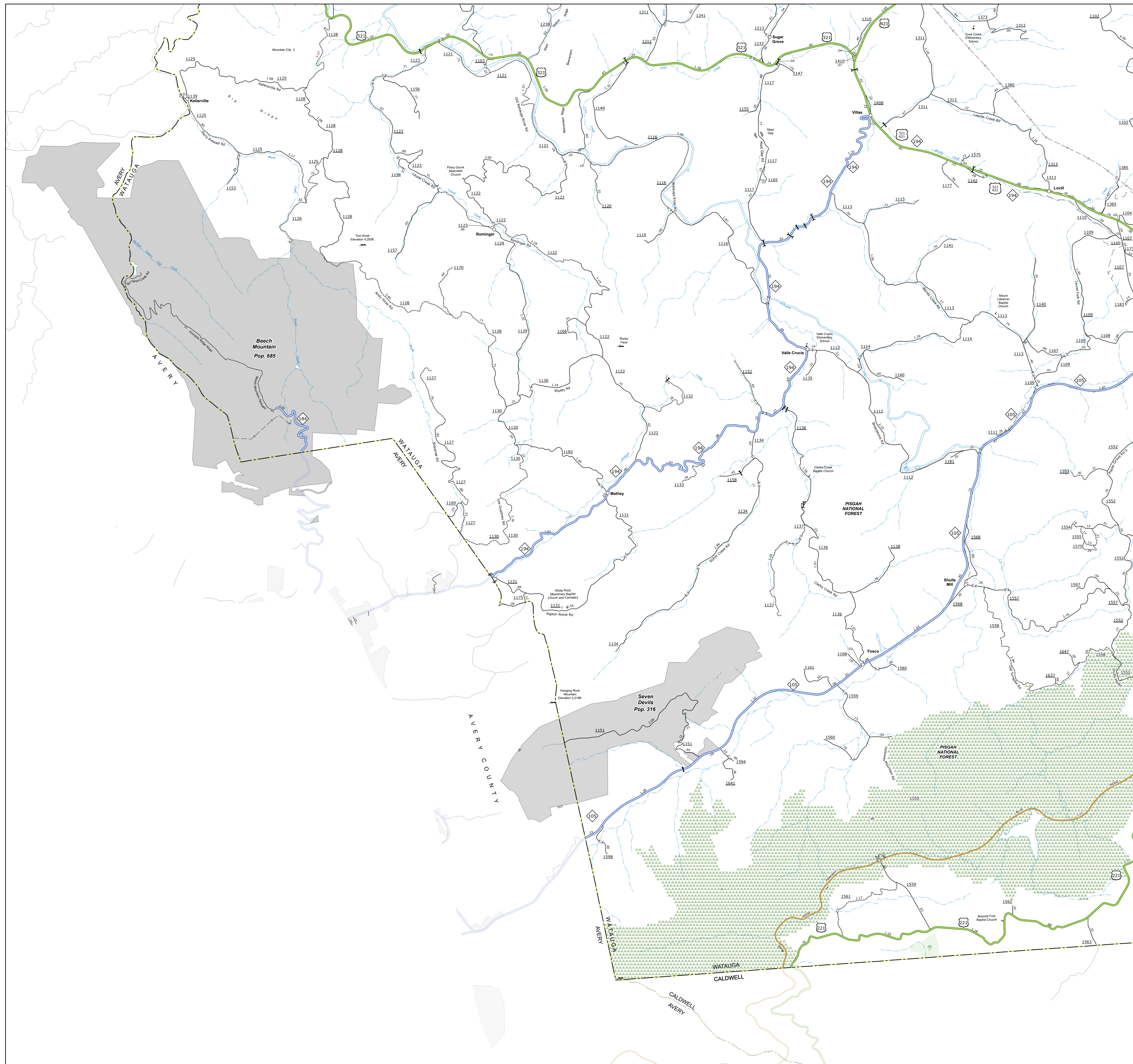
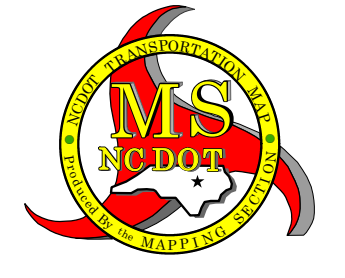
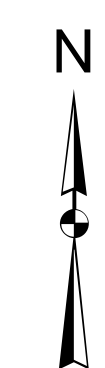


THE STATE OF NORTH CAROLINA, BEING THE COUNTY OF WATAUGA, HAS CAUSED THIS MAP TO BE MADE AND TO BE PUBLISHED BY THE NORTH CAROLINA DEPARTMENT OF TRANSPORTATION, IN COOPERATION WITH THE FEDERAL HIGHWAY ADMINISTRATION. THE ORIGINAL COPY OF THIS MAP IS KEPT IN THE OFFICE OF THE STATE ENGINEER, RALEIGH, NORTH CAROLINA.



- LEGEND**
- INTERSTATE US NC
 - UNPAVED SURFACED ROAD
 - HARD SURFACED ROAD
 - NON-SYSTEM ROAD
 - PROVISIONALLY DRAWN ROAD
 - PROJECTED LOCATION
 - INTERSECTION DISTANCE
 - STANDARD ROAD BRIDGE
 - RAILROAD BRIDGE
 - DRAW SPAN ON BRIDGE
 - PEDESTRIAN BRIDGE
 - PEDESTRIAN WALKWAY
 - PEDESTRIAN UNDERPASS
 - VEHICULAR UNDERPASS
 - TUNNEL
 - CULVERT
 - PIPE
 - INTERSTATE HIGHWAY
 - U.S. NUMBERED HIGHWAY
 - N.C. NUMBERED HIGHWAY
 - U.S. NUMBERED BICYCLE ROUTE
 - N.C. NUMBERED BICYCLE ROUTE
 - INTERSTATE INTERCHANGE NUMBER
 - SECONDARY ROAD NUMBER
 - UTILITY LINES
 - RAILROAD LINE
 - RAILROAD STATION
 - INSET AREA
 - STATE LINE
 - COUNTY LINE
 - SMOOTHED URBAN BOUNDARIES
 - CITY LIMITS
 - FERRY ROUTE AND RAMP
 - NARROW CREEK OR STREAM
 - WIDE RIVER OR CREEK
 - RESERVOIR, POND OR LAKE W/ ISLAND
 - DAM OR DAM WITH LOCK
 - WATERFALL
 - SWAMP
 - COMMUNITY
 - COUNTY SEAT
 - SCHOOL
 - COLLEGE OR UNIVERSITY
 - HOSPITAL
 - COAST GUARD STATION
 - CHURCH
 - CHURCH WITH CEMETERY
 - CEMETERY
 - PATROL STATION
 - CORRECTION OR PENAL INSTITUTION
 - QUARRY
 - MINE OR PIT
 - HIGHWAY GARAGE OR MAINT. YARD
 - HIGHWAY DIV. OR DIST. OFFICE
 - MILITARY POST
 - WEIGH STATION
 - FAIRGROUNDS
 - HISTORICAL SITE
 - POINTS OF INTEREST
 - POST OFFICE
 - STATE FOREST
 - LIGHTHOUSE
 - MOUNTAIN SUMMIT
 - MOUNTAIN GAP
 - OVERLOOK
 - REST AREA
 - VISITOR CTR. REST AREA
 - WELCOME CTR. REST AREA
 - AIRPORT
 - MILITARY AIRPORT
 - NATIONAL / STATE FOREST BOUNDARY
 - WILDLIFE REFUGE
 - NATIONAL / STATE PARK BOUNDARY
 - GAME LANDS BOUNDARY
 - MILITARY RESERVATION BOUNDARY
 - INDIAN RESERVATION BOUNDARY



WATAUGA COUNTY

NORTH CAROLINA

PREPARED BY THE
NORTH CAROLINA DEPARTMENT OF TRANSPORTATION
OPERATIONS PROGRAM MANAGEMENT UNIT - MAPPING SECTION
IN COOPERATION WITH THE
U.S. DEPARTMENT OF TRANSPORTATION
FEDERAL HIGHWAY ADMINISTRATION



NORTH CAROLINA PLANE COORDINATE SYSTEM
LAMBERT CONFORMAL CONIC PROJECTION