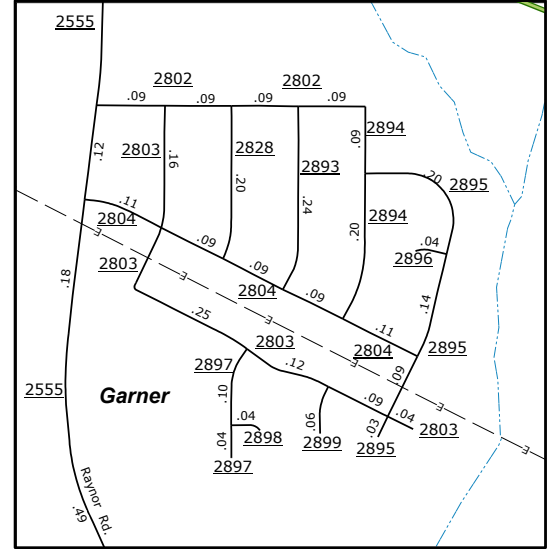
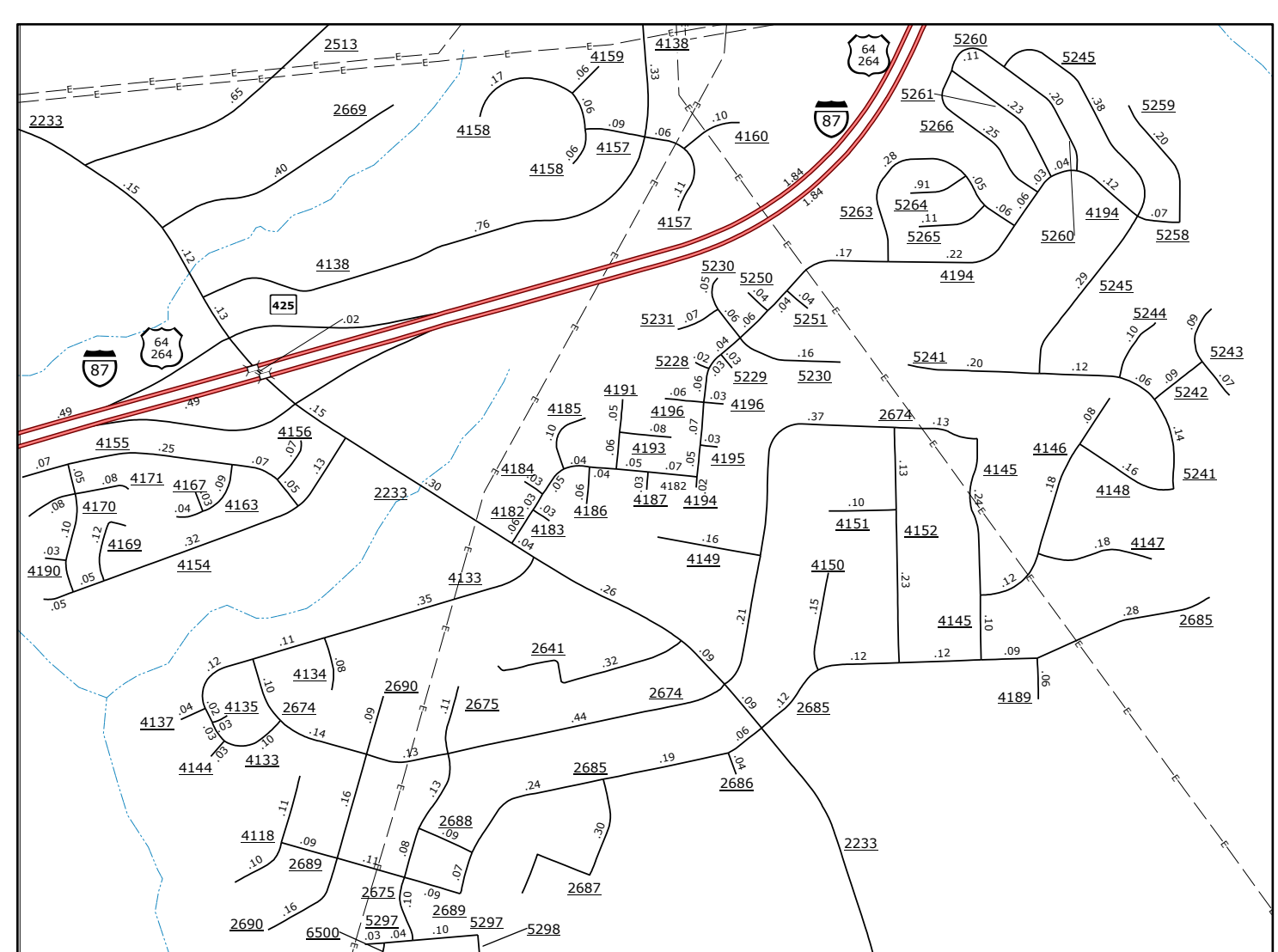


TERMS OF USE: The Mapping Section's goal is to provide the most accurate and current information possible. Map data is compiled from numerous sources and is not guaranteed to be 100% accurate. The user assumes all responsibility for any errors or omissions. The user agrees to hold the Mapping Section harmless for any damages, including consequential damages, arising from the use of this map. The user agrees to indemnify and hold the Mapping Section harmless for any damages, including consequential damages, arising from the use of this map.

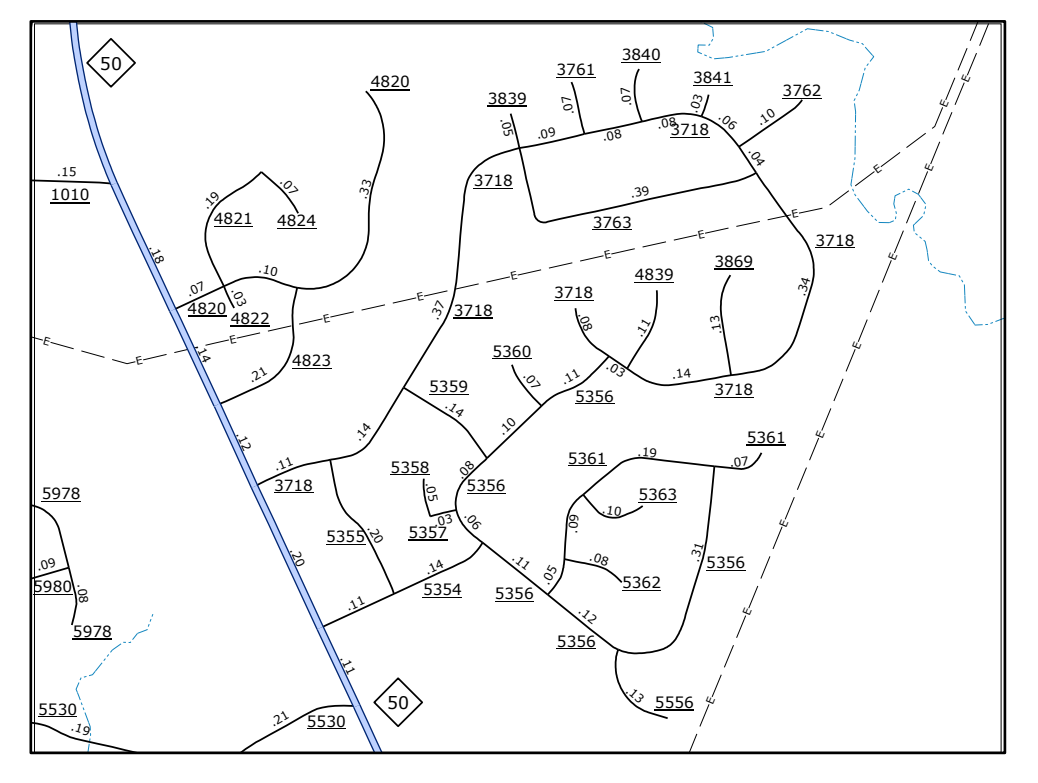
COPIES OF THIS MAP ARE AVAILABLE TO THE PUBLIC FOR NOMINAL COST. CONTACT US TO ORDER: (919) 857-1234



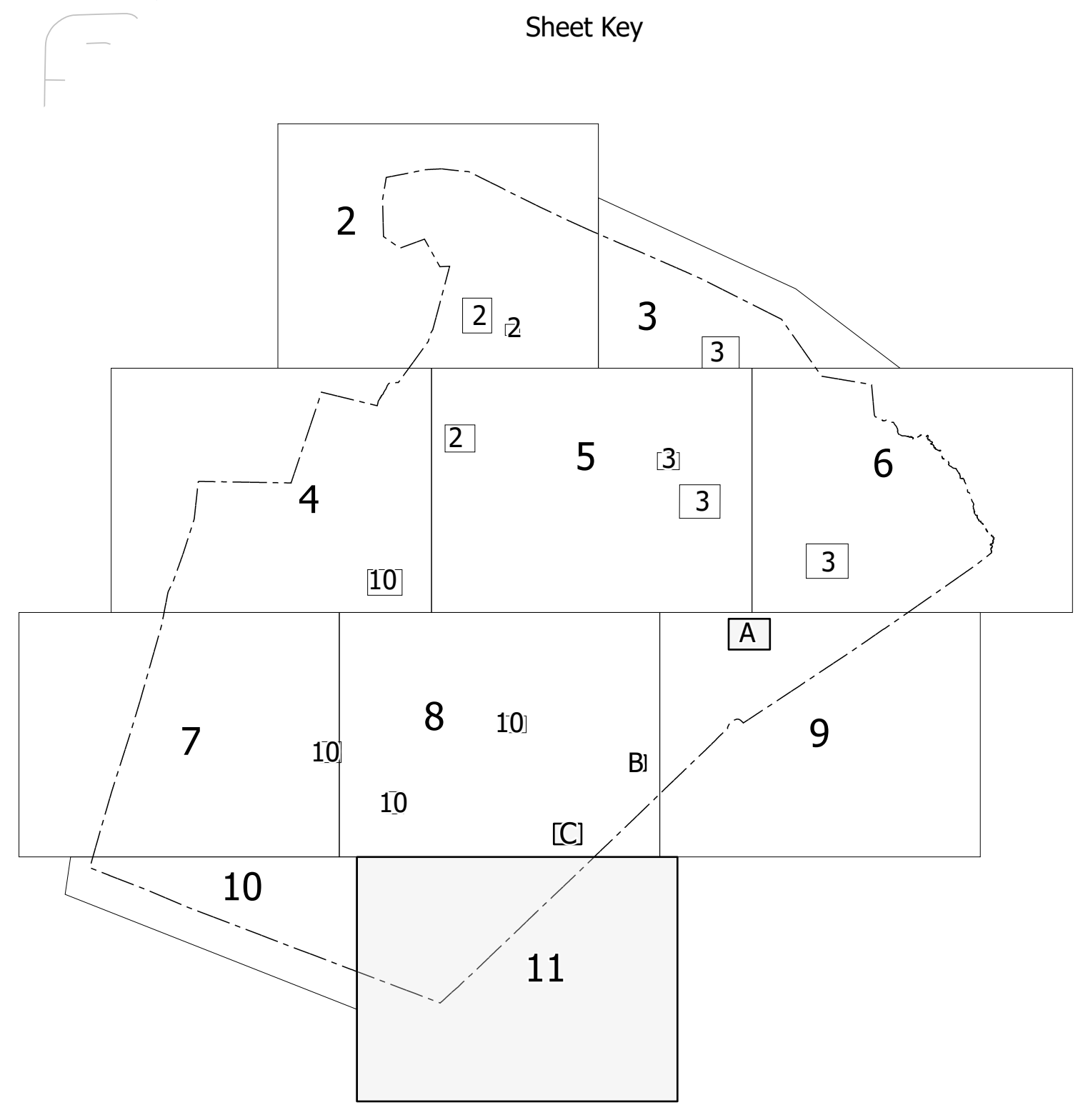
B



A



C



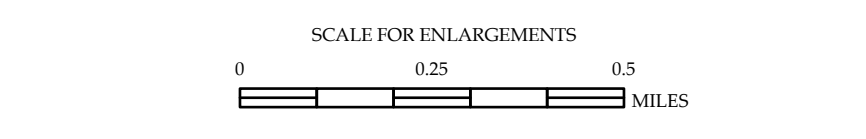
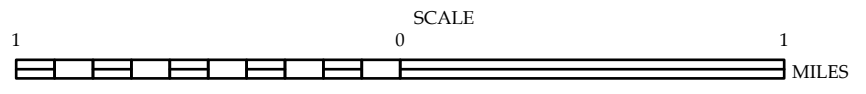
Sheet Key

- LEGEND**
- INTERSTATE US NC Divided Hwy Undivided Hwy
  - BLUE RIDGE PARKWAY
  - SNOW-BLENDED ROAD
  - HARD SURFACE ROAD
  - NON-SYSTEM ROAD
  - PROVISIONALLY OPEN ROAD
  - PROJECTED LOCATION
  - INTERSECTION INSTANT
  - STANDARD ROAD BRIDGE
  - RAILROAD BRIDGE
  - DRAW SPAN ON BRIDGE
  - PEDESTRIAN BRIDGE
  - PEDESTRIAN WALKWAY
  - PEDESTRIAN UNDERPASS
  - VEHICLE UNDERPASS
  - TUNNEL
  - CULVERT
  - POB
  - INTERSTATE HIGHWAY
  - US NUMBERED HIGHWAY
  - NC NUMBERED HIGHWAY
  - US NUMBERED BICYCLE ROUTE
  - NC NUMBERED BICYCLE ROUTE
  - INTERSTATE INTERCHANGE NUMBER
  - SECONDARY ROAD NUMBER
  - UTILITY LINES
  - RAILROAD LINE
  - RAILROAD STATION
  - INLET AREA
  - STATE LINE
  - COUNTY LINE
  - CITY LIMITS
  - FERRY ROUTE
  - NARROW CREEK OR STREAM
  - WIDE RIVER OR CREEK
  - RESERVOIR, POND OR LAKE W/ ISLAND
  - DAM OR DAM WITH LOCK
  - WATERFALL
  - SWAMP
  - COMMUNITY
  - COUNTY SEAT
  - SCHOOL
  - COLLEGE OR UNIVERSITY
  - FEDERAL COAST GUARD STATION
  - CHURCH
  - CHURCH WITH CEMETERY
  - CEMETERY
  - PARK STATION
  - CORRECTION OR PENAL INSTITUTION
  - QUARRY
  - MINE OR PIT
  - HIGHWAY GARAGE OR MAINT. YARD
  - HIGHWAY INV. OR DIST. OFFICE
  - MILITARY POST
  - WEIGH STATION
  - FARROWING
  - HISTORICAL SITE
  - POINTS OF INTEREST
  - LIGHTHOUSE
  - MOUNTAIN SUMMIT
  - OVERLOOK
  - REST AREA
  - VISITOR CENTER AREA
  - WELCOME CENTER AREA
  - BARBICUE
  - MILITARY AIRPORT
  - HILLTOP
  - NATIONAL / STATE FOREST BOUNDARY
  - WILDLIFE REFUGE
  - NATIONAL / STATE PARK BOUNDARY
  - GAME LANDS BOUNDARY
  - MILITARY RESERVATION BOUNDARY
  - INDIAN RESERVATION BOUNDARY



**WAKE COUNTY  
NORTH CAROLINA**

PREPARED BY THE  
NORTH CAROLINA DEPARTMENT OF TRANSPORTATION  
OPERATIONS PROGRAM MANAGEMENT UNIT - MAPPING SECTION  
IN COOPERATION WITH THE  
U.S. DEPARTMENT OF TRANSPORTATION  
FEDERAL HIGHWAY ADMINISTRATION



NORTH CAROLINA PLANE COORDINATE SYSTEM  
LAMBERT CONFORMAL CONIC PROJECTION