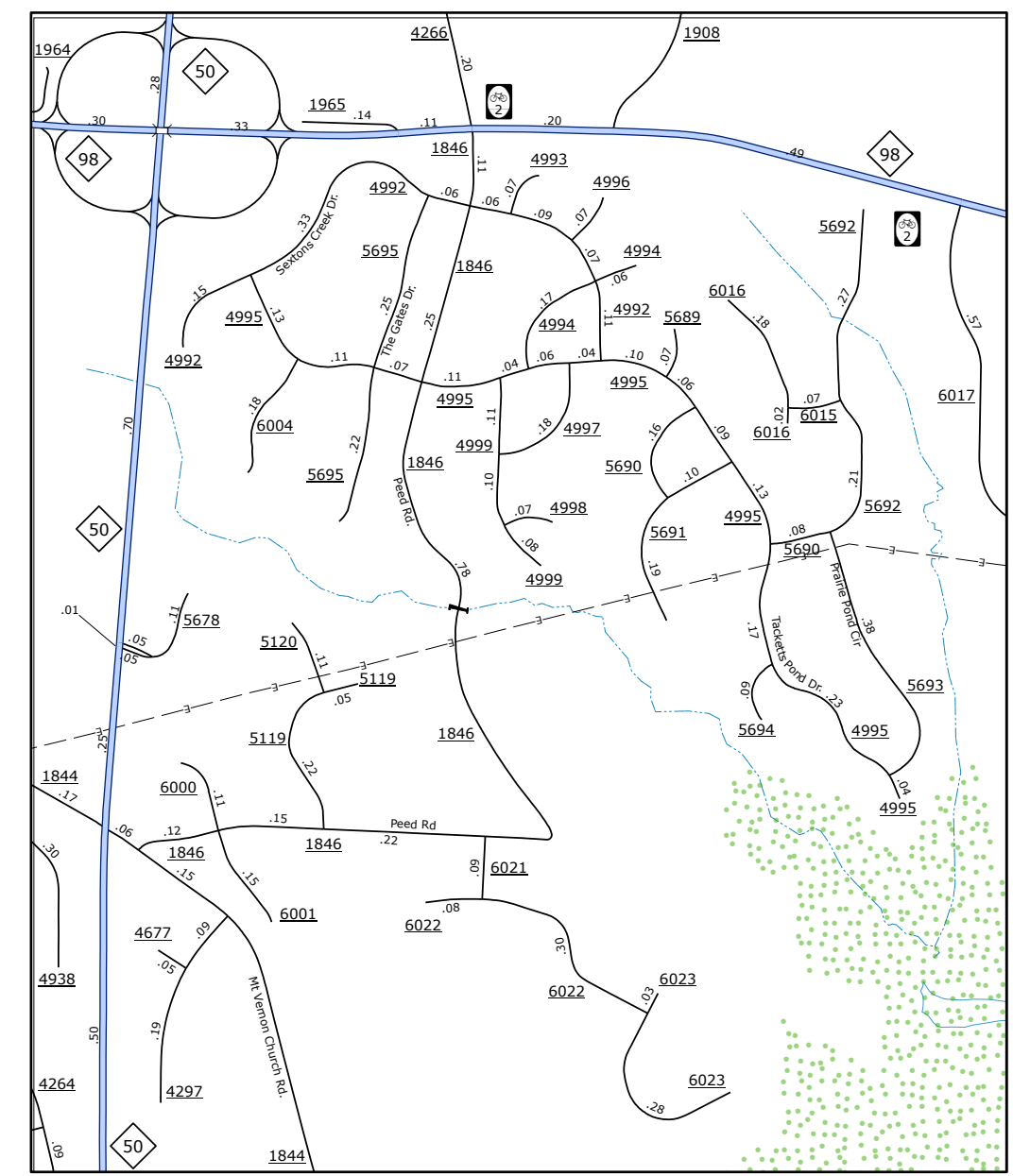
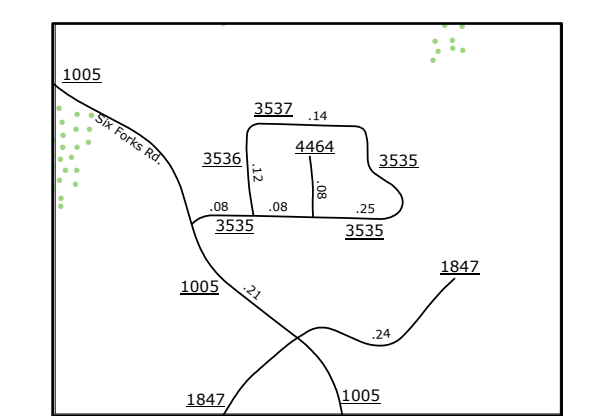


TERMS OF USE: The Mapping Section's goal is to provide the most accurate and current information possible. Map data is compiled from numerous sources including aerial photography, ground surveys, and other data. The Mapping Section is not responsible for errors or omissions. The user assumes all liability for any use of this information. This information is provided on an "as is" basis and is not intended to be used for any purpose other than that for which it was intended. The user assumes all liability for any use of this information.

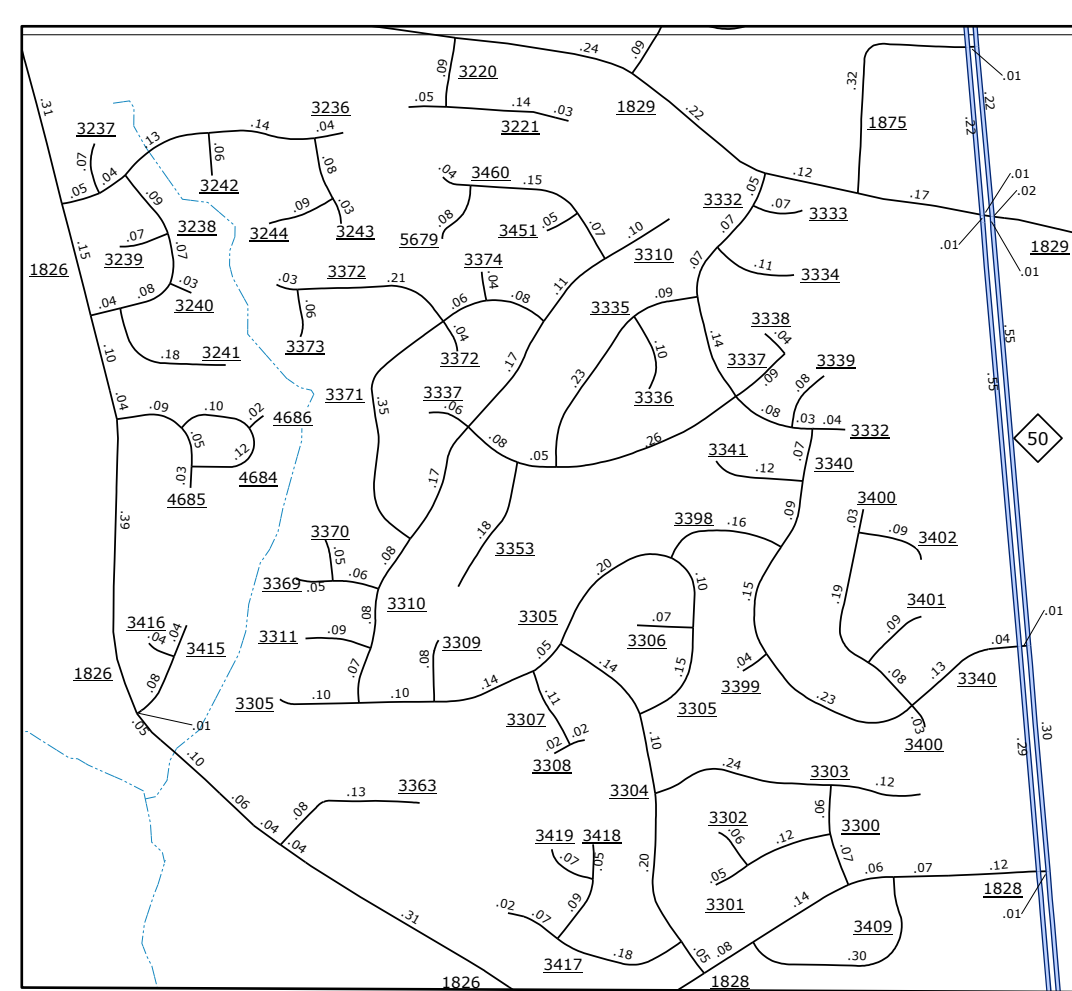
COPIES OF THIS MAP ARE AVAILABLE TO THE PUBLIC AT NO CHARGE. CONTACT US TO ORDER: (919) 857-2222 OR VISIT OUR WEBSITE: www.ncdot.gov



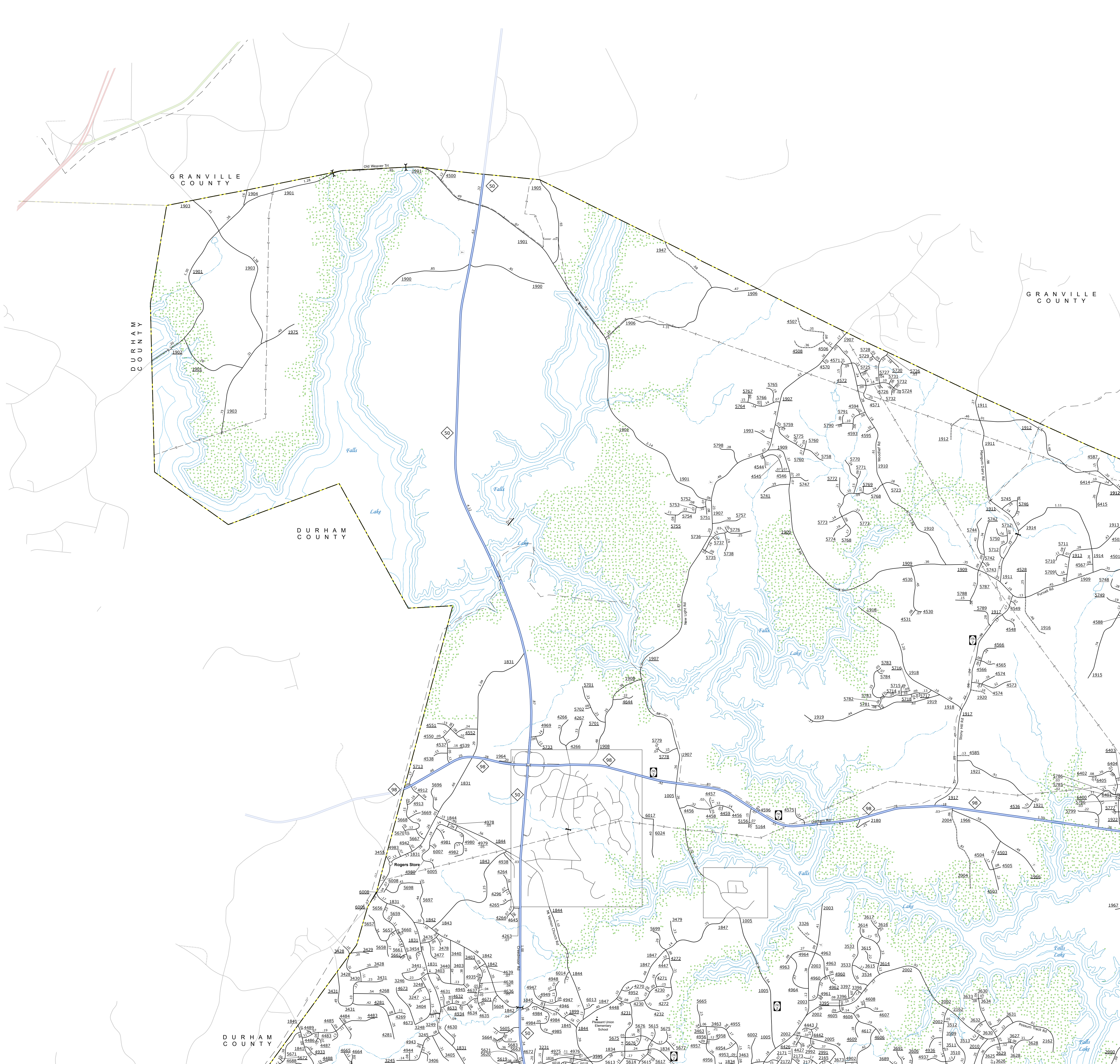
A



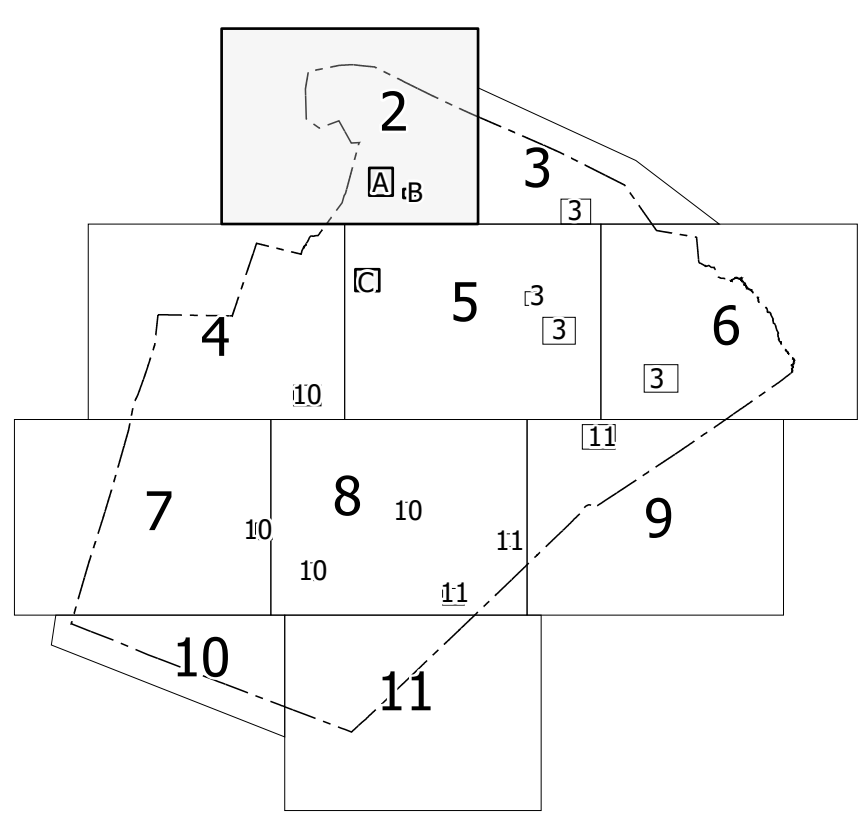
B



C



Sheet Key



LEGEND

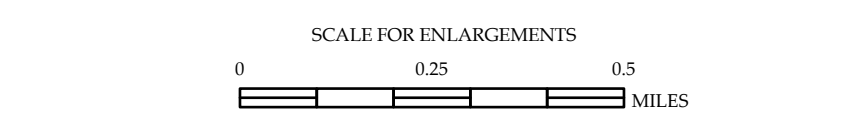
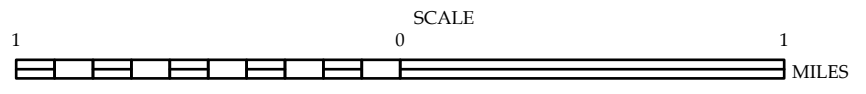
- INTERSTATE US NC Divided Hwy Undivided Hwy
- BLUE RIDGE PARKWAY
- SNOW-BLENDED ROAD
- HARD SURFACE ROAD
- NON-SYSTEM ROAD
- PROVISIONALLY OPEN ROAD
- PROJECTED LOCATION
- INTERSECTION DISTANCE
- STANDARD ROAD BRIDGE
- RAILROAD BRIDGE
- DRAW SPAN ON BRIDGE
- PEDESTRIAN BRIDGE
- PEDESTRIAN WALKWAY
- PEDESTRIAN UNDERPASS
- VEHICLE UNDERPASS
- TUNNEL
- CULVERT
- PIPS
- INTERSTATE HIGHWAY
- U.S. NUMBERED HIGHWAY
- N.C. NUMBERED HIGHWAY
- U.S. NUMBERED BICYCLE ROUTE
- N.C. NUMBERED BICYCLE ROUTE
- INTERSTATE INTERCHANGE NUMBER
- SECONDARY ROAD NUMBER
- RAILROAD LINE
- RAILROAD STATION
- POST OFFICE
- STATE LINE
- COUNTY LINE
- CITY LIMITS
- FERRY ROUTE
- NARROW CREEK OR STREAM
- WIDE RIVER OR CREEK
- RESERVOIR, POND OR LAKE W/ ISLAND
- DAM OR DAM WITH LOCK
- WATERFALL
- SWAMP
- COMMUNITY
- COUNTY SEAT
- SCHOOL
- COLLEGE OR UNIVERSITY
- FEDERAL COAST GUARD STATION
- CHURCH
- CHURCH WITH CEMETERY
- CEMETERY
- PARK STATION
- CORRECTION OR PENAL INSTITUTION
- QUARRY
- HOME OR FT. HIGHWAY GARAGE OR MAINT. YARD
- HIGHWAY INV. OR DIST. OFFICE
- MILITARY POST
- WEIGH STATION
- FABRIQUONDS
- HISTORICAL SITE
- POINTS OF INTEREST
- LIGHTHOUSE
- MOUNTAIN SUMMIT
- OVERLOOK
- REST AREA
- VISITOR CENTER AREA
- WILDCOM-CTR REST AREA
- AIRPORT
- MILITARY AIRPORT
- HILLPORT

- NATIONAL / STATE FOREST BOUNDARY
- WILDLIFE REFUGE
- NATIONAL / STATE PARK BOUNDARY
- GAME LANDS BOUNDARY
- MILITARY RESERVATION BOUNDARY
- INDIAN RESERVATION BOUNDARY



WAKE COUNTY NORTH CAROLINA

PREPARED BY THE NORTH CAROLINA DEPARTMENT OF TRANSPORTATION OPERATIONS PROGRAM MANAGEMENT UNIT - MAPPING SECTION IN COOPERATION WITH THE U.S. DEPARTMENT OF TRANSPORTATION FEDERAL HIGHWAY ADMINISTRATION



NORTH CAROLINA PLANE COORDINATE SYSTEM LAMBERT CONFORMAL CONIC PROJECTION