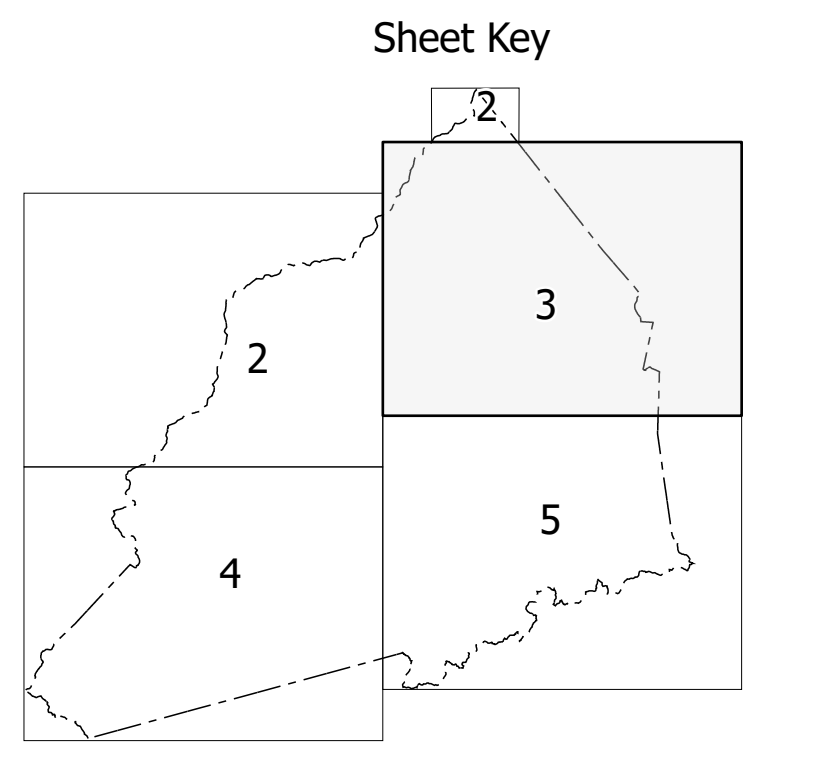
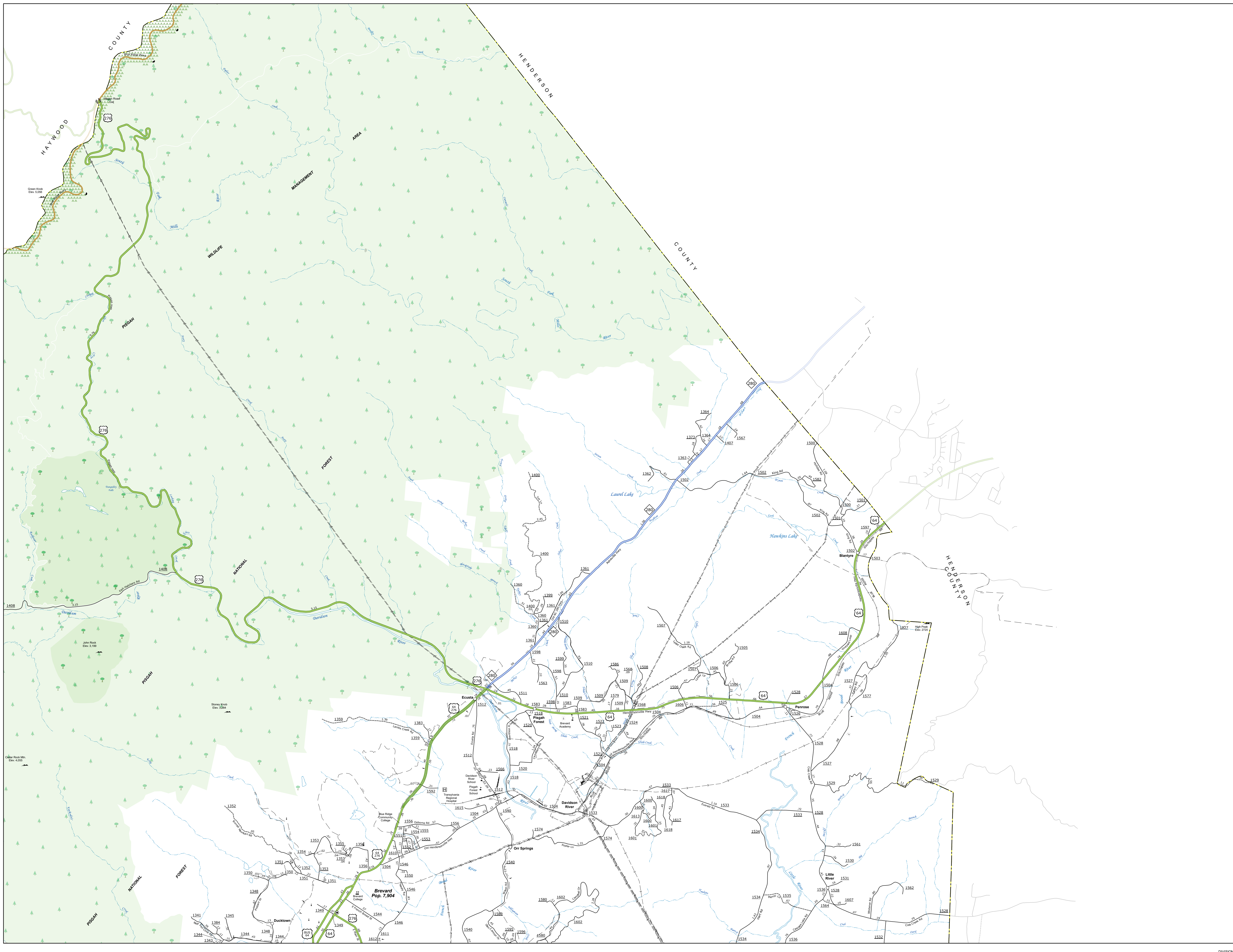


TERMS OF USE: The Mapping Section's goal is to provide the most accurate and current information possible. Map data is compiled from the most current available data. The North Carolina Department of Transportation does not warrant the accuracy of the information shown on this map. The user assumes all liability for any use of the information shown on this map. For digital copies of this map or additional map products, visit <http://www.ncdot.gov/transportation/mapping>.

COPIES OF THIS MAP ARE AVAILABLE TO THE PUBLIC. CONTACT US TO ORDER: maps@ncdot.gov or call 1-800-368-6848.



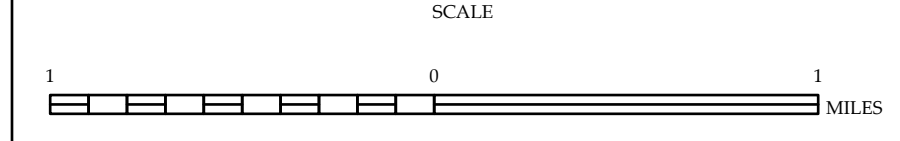
LEGEND

	INTERSTATE - US		Decided Hwy
	INTERSTATE - NC		Undecided Hwy
	BLUE RIDGE PARKWAY		PROPOSED/REPAVED ROAD
	CORNERED/REPAVED ROAD		HARD SURFACED ROAD
	NON-SYSTEM ROAD		PROFESSIONALLY DRAWN ROAD
	INTERSECTION/INTERCHANGE		PROJECTED LOCATION
	STANDARD ROAD BRIDGE		RAILROAD BRIDGE
	RAILROAD BRIDGE		DRAW SPAN ON BRIDGE
	PEDESTRIAN BRIDGE		PEDESTRIAN WALKWAY
	PEDESTRIAN UNDERPASS		VEHICLE UNDERPASS
	TUNNEL		FLUVENT
	RAILROAD		RAILROAD STATION
	STATE LINE		COUNTY LINE
	CITY LINE		FERRY ROUTE
	NARROW CREEK OR STREAM		WIDE RIVER OR CREEK
	RESERVOIR, POND OR LAKE W/ ISLAND		DAM OR DAM WITH LAKE
	WATERFALL		SWAMP
	COMMUNITY, TOWN OR CITY CENTER		COUNTY SEAT
	SCHOOL		COLLEGE OR UNIVERSITY
	HOSPITAL		COAST GUARD STATION
	CHURCH		CHURCH WITH CEMETERY
	CEMETERY		PARK STATION
	CORRECTION OR JAIL INSTITUTION		QUARRY
	NEW OR FEI		HIGHWAY GARAGE OR MAINT. YARD
	HIGHWAY DIST. OR DIST. OFFICE		MILITARY POST
	HISTORICAL SITE		PARAGRAPH
	PROVINCE OF INTEREST		STATE FOREST
	STATE FOREST		FOUNTAIN
	MOUNTAIN SUMMIT		REST AREA
	OVERLOOK		WINDOR CTR. REST AREA
	REST AREA		WELFARE CTR. REST AREA
	WINDOR CTR. REST AREA		AIRPORT
	MILITARY AIRPORT		FIELDPOST
	NATIONAL STATE FOREST BOUNDARY		
	WILDLIFE REFUGE		
	NATIONAL STATE PARK BOUNDARY		
	GAME LANDS BOUNDARY		
	MILITARY RESERVATION BOUNDARY		
	INDIAN RESERVATION BOUNDARY		



TRANSYLVANIA COUNTY NORTH CAROLINA

PREPARED BY THE
NORTH CAROLINA DEPARTMENT OF TRANSPORTATION
OPERATIONS PROGRAM MANAGEMENT UNIT - MAPPING SECTION
IN COOPERATION WITH THE
U.S. DEPARTMENT OF TRANSPORTATION
FEDERAL HIGHWAY ADMINISTRATION



NORTH CAROLINA PLANE COORDINATE SYSTEM
LAMBERT CONFORMAL CONIC PROJECTION