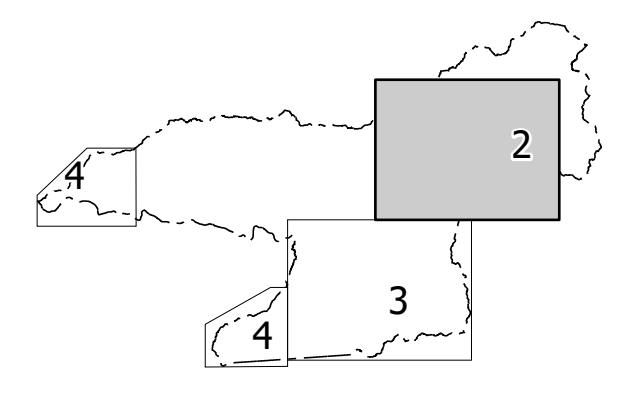


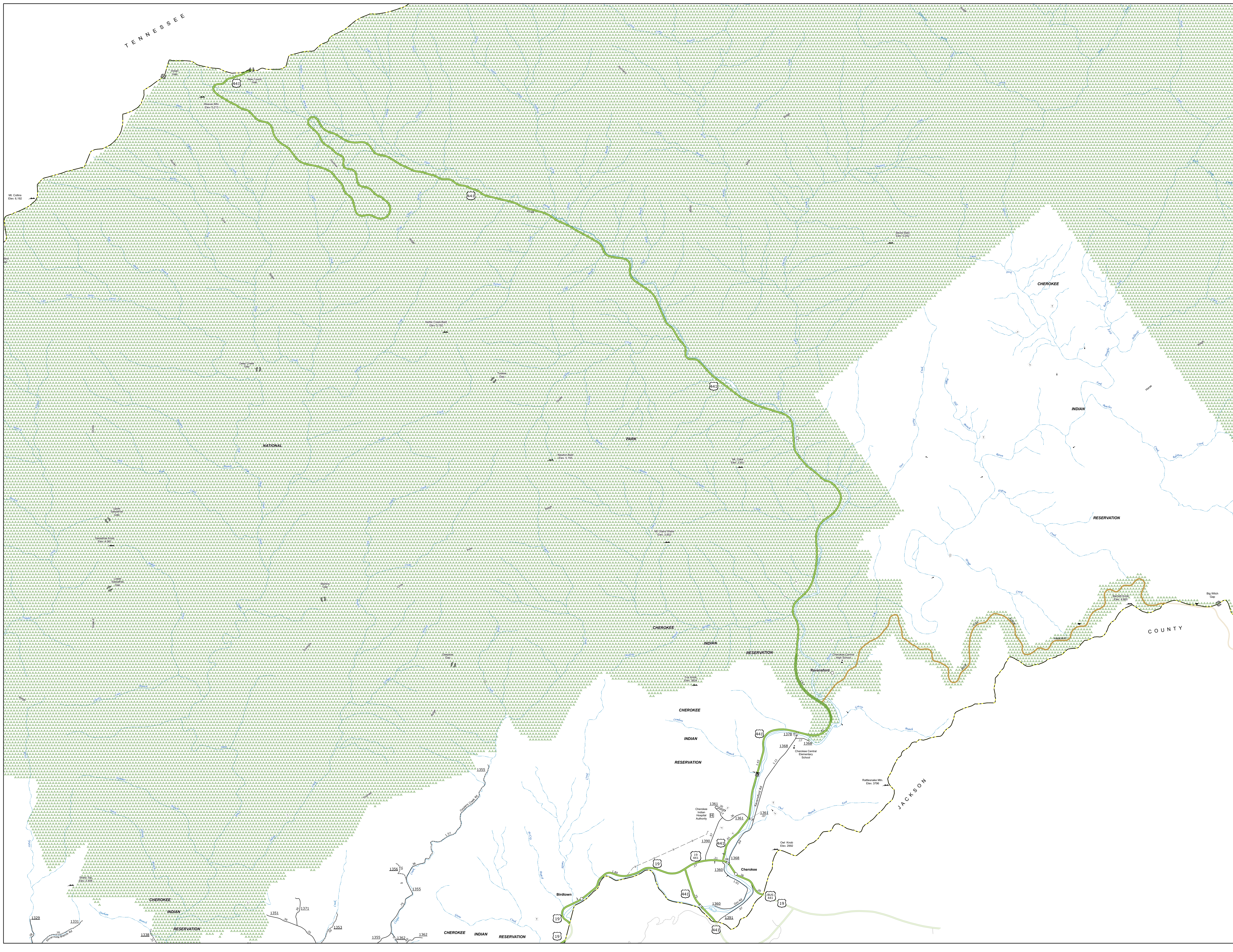
TENNESSEE

Sheet Key



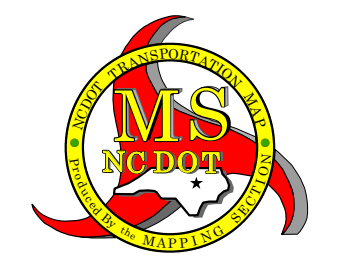
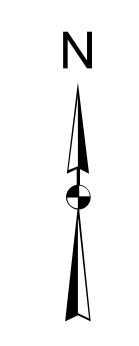
TERMS OF USE: The Mapping Section's goal is to provide the most accurate and current information possible. Map data is compiled from various sources and is not guaranteed to be 100% accurate. The user assumes all responsibility for any errors or omissions. The user agrees to indemnify and hold the State of North Carolina harmless from any and all claims, damages, and expenses, including reasonable attorneys' fees, arising from the use of this map.

COPIES OF THIS MAP ARE AVAILABLE TO THE PUBLIC AT NO CHARGE. CONTACT US TO ORDER: 919.733.3333 OR WWW.STATEMAPS.COM



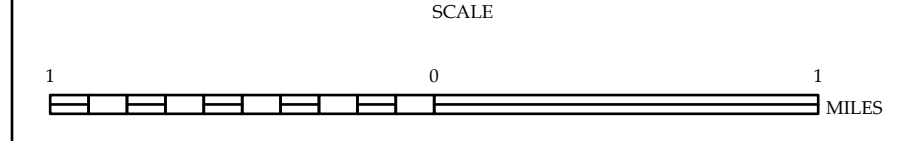
LEGEND

- INTERSTATE US NC
- Decided Hwy
- Undecided Hwy
- HULE RIDGE PARKWAY
- CONCRETE PAVED ROAD
- HARD SURFACED ROAD
- SOFT SURFACED ROAD
- NON-SYSTEM ROAD
- PROFESSIONALLY DRAWN ROAD
- PROJECTED LOCATION
- INTERSECTION BREAK
- STANDARD ROAD BRIDGE
- RAILROAD BRIDGE
- DRAW SPAN BRIDGE
- PIEDMONT BRIDGE
- PIEDMONT UNDERPASS
- PIEDMONT UNDERPASS
- TRUCK LANE UNDERPASS
- TUNNEL
- FLUYERT
- PIE
- INTERSTATE HIGHWAY
- U.S. NUMBERED HIGHWAY
- U.S. NUMBERED HIGHWAY
- U.S. NUMBERED BI-CYCLE ROUTE
- U.S. NUMBERED BI-CYCLE ROUTE
- INTERSTATE INTERCHANGE NUMBER
- SECONDARY ROAD NUMBER
- UTILITY LINES
- RAILROAD LINE
- RAILROAD STATION
- POST AREA
- STATE LINE
- COUNTY LINE
- CITY BOUNDARY
- FERRY ROUTE
- NARROW CREEK OR STREAM
- WIDE RIVER OR CREEK
- RESERVOIR, POND OR LAKE W/ ISLAND
- DAM OR DAM WITH LAKE
- WATERFALL
- SWAMP
- COMMUNITY, TOWN OR CITY CENTER
- COUNTY SEAT
- SCHOOL
- COLLEGE OR UNIVERSITY
- HOSPITAL
- COAST GUARD STATION
- CHURCH
- CHURCH WITH CEMETERY
- CEMETERY
- PARK STATION
- CORRECTION OR PENAL INSTITUTION
- QUARRY
- MINING SITE
- HIGHWAY GARAGE OR MAINT. YARD
- HIGHWAY DIST. OR DIST. OFFICE
- SILVER POST
- WATER STATION
- FARGO STATION
- HISTORICAL SITE
- POINT OF INTEREST
- STATE FOREST
- BOOTHING
- MOUNTAIN SUMMIT
- OVERLOOK
- REST AREA
- VISITOR CTR. REST AREA
- WILDLIFE CTR. REST AREA
- AIRPORT
- MILITARY AIRPORT
- HELIPORT
- NATIONAL STATE FOREST BOUNDARY
- WILDLIFE REFUGE
- NATIONAL STATE PARK BOUNDARY
- GAME LANDS BOUNDARY
- MILITARY RESERVATION BOUNDARY
- INDIAN RESERVATION BOUNDARY



SWAIN COUNTY NORTH CAROLINA

PREPARED BY THE NORTH CAROLINA DEPARTMENT OF TRANSPORTATION OPERATIONS PROGRAM MANAGEMENT UNIT - MAPPING SECTION IN COOPERATION WITH THE U.S. DEPARTMENT OF TRANSPORTATION FEDERAL HIGHWAY ADMINISTRATION



NORTH CAROLINA PLANE COORDINATE SYSTEM LAMBERT CONFORMAL CONIC PROJECTION