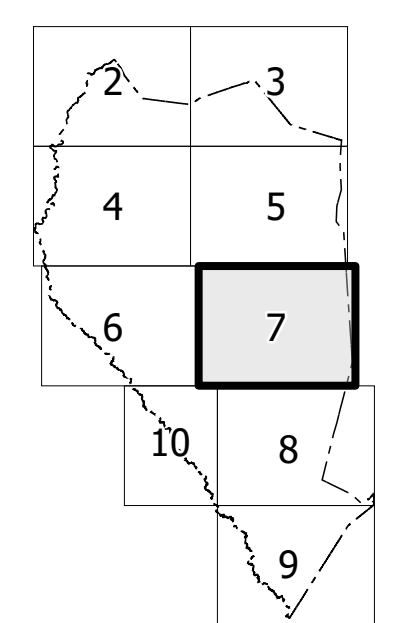


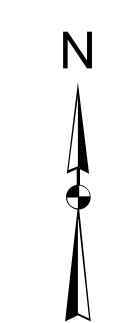
TERMS OF USE: The Mapping Section's goal is to provide the most accurate and current information possible. Map data is compiled from the area provided and may vary. The North Carolina Department of Transportation does not have liability for any errors in the map data. This map is for informational purposes only. For original content of this map, visit [www.ncdot.gov](http://www.ncdot.gov).

COPIES OF THIS MAP ARE AVAILABLE TO THE PUBLIC AT THE NORTH CAROLINA DEPARTMENT OF TRANSPORTATION, 1000 EAST 7TH STREET, RALEIGH, NC 27601.

Sheet Key

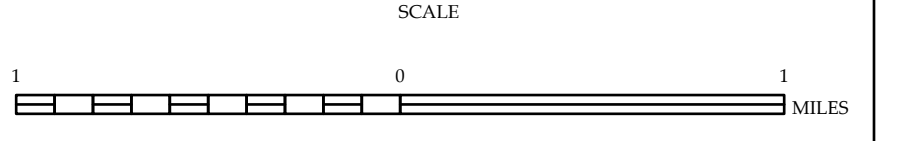


- LEGEND**
- INTERSTATE US SC
  - Divided Hwy
  - Blue Ridge Parkway
  - Unimproved Surface Road
  - Non-System Road
  - Proposed Interchange
  - Proposed Interchange
  - Standard Road Bridge
  - Road Road Bridge
  - Beam-Span Bridge
  - Pedestrian Bridge
  - Pedestrian Walkway
  - Vertical Underpass
  - Tunnel
  - Culvert
  - PPR
  - INTERSTATE BRIDGEWAY
  - U.S. NUMBERED HIGHWAY
  - N.C. NUMBERED HIGHWAY
  - U.S. NUMBERED BIWAYLE ROUTE
  - N.C. NUMBERED BIWAYLE ROUTE
  - INTERSTATE INTERCHANGE NUMBER
  - SECONDARY ROAD NUMBER
  - UTILITY LINES
  - RAILROAD LINE
  - RAILROAD STATION
  - RAILROAD CROSSING
  - STATE LINE
  - CITY LINE
  - SAMPSON COUNTY BOUNDARIES
  - CITY LIMITS
  - PERMITS AND ROAD
  - NARROW GULCH OR STREAM
  - WIDE RIVER OR CREEK
  - BELOW OR ABOVE LAKE W/ INLAND
  - DAM OR DAM WITH LOCK
  - WATERFALL
  - SWAMP
  - COMMUNITY
  - COUNTY SEAT
  - SCHOOL
  - COLLEGE OR UNIVERSITY
  - HOSPITAL
  - CONGREGATION
  - CHURCH
  - CEMETERY
  - PRISON
  - CORRECTIONAL INSTITUTION
  - QUARRY
  - MINE OR PIT
  - BIWAYWAY GARAGE OR MAINT. YARD
  - BIWAYWAY DEP. OR POST OFFICE
  - MILITARY POST
  - WATER STATION
  - FABRICATION
  - HISTORICAL SITE
  - POND OR RESERVOIR
  - POST OFFICE
  - STATE FOREST
  - LIGHTHOUSE
  - MOUNTAIN CABIN
  - MOUNTAIN GAP
  - OVERLOOK
  - REST AREA
  - VISITOR CENTER AREA
  - WILSON CENTER AREA
  - AIRPORT
  - MILITARY AIRPORT
  - NATIONAL STATE FOREST BOUNDARY
  - WILDLIFE REFUGE
  - NATIONAL STATE PARK BOUNDARY
  - GAME LANDS BOUNDARY
  - MILITARY RESERVATION BOUNDARY
  - BIWAYWAY RESERVATION BOUNDARY



**SAMPSON COUNTY  
NORTH CAROLINA**

PREPARED BY THE  
NORTH CAROLINA DEPARTMENT OF TRANSPORTATION  
OPERATIONS PROGRAM MANAGEMENT UNIT - MAPPING SECTION  
IN COOPERATION WITH THE  
U.S. DEPARTMENT OF TRANSPORTATION  
FEDERAL HIGHWAY ADMINISTRATION



NORTH CAROLINA PLANE COORDINATE SYSTEM  
LAMBERT CONFORMAL CONIC PROJECTION