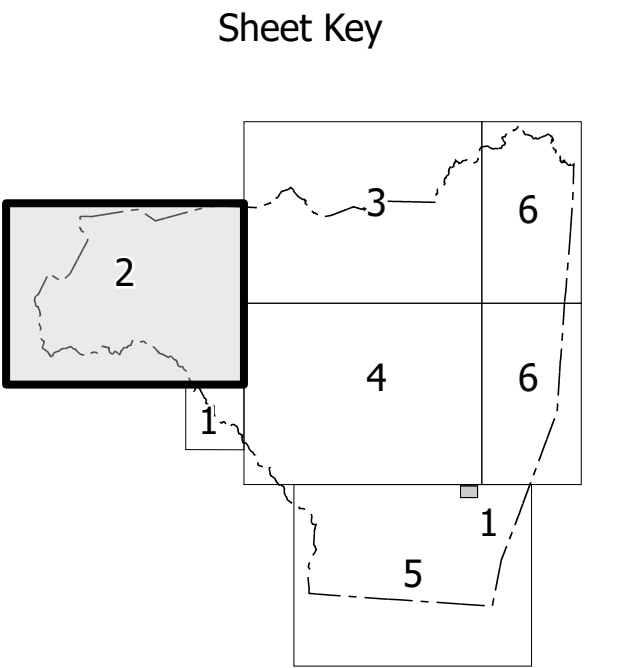
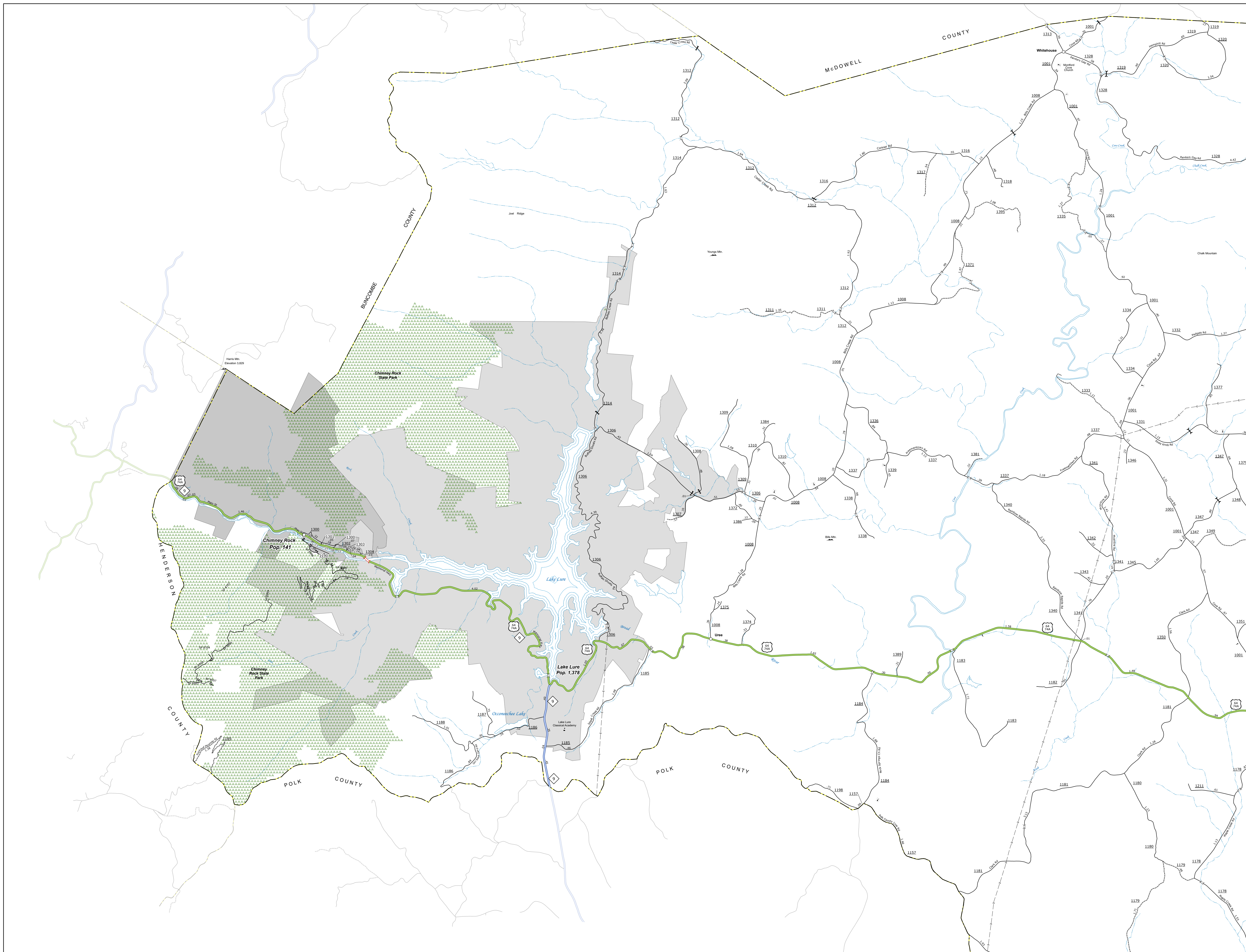
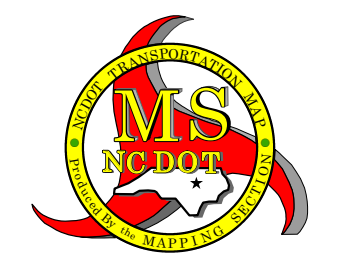
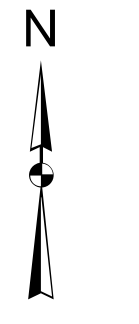


TERMS OF USE: The Mapping Section's goal is to provide the most accurate and current information possible. Map data is compiled from various sources including aerial photography, ground surveys, and other data. The user assumes all responsibility for any errors or omissions on this map. The user agrees to indemnify and hold the State of North Carolina Department of Transportation harmless from any and all claims, damages, and expenses, including reasonable attorneys' fees, arising from the use of this map. For a full copy of these terms and conditions, visit <http://www.ncdot.gov/Information/About/MapData/MapDataTerms.htm>.

COPIES OF THIS MAP ARE AVAILABLE TO THE PUBLIC. FOR MORE INFORMATION, CONTACT US TO ORDER. PHONE: 919.874.2000. FAX: 919.874.2001. WWW: www.ncdot.gov/Information/About/MapData/MapDataTerms.htm.

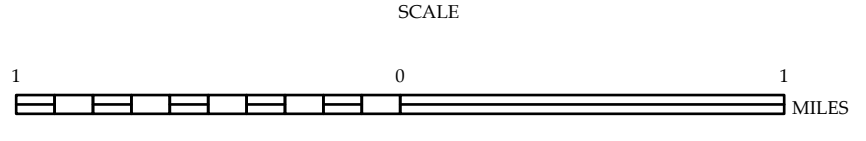


- LEGEND**
- INTERSTATE US NC Divided Hwy Undivided Hwy
 - BLUE RIDGE PARKWAY
 - INNOVATIVE STREET ROAD
 - HANDS REACHED ROAD
 - NON-STEEL ROAD
 - PROVISIONALLY DRAWN ROAD
 - PROPOSED TRAIL OR ALLEY
 - INTEREST POINT DISTANCE
 - STANDARD ROAD BRIDGE
 - RAILROAD BRIDGE
 - TRUSS SPAN ON BRIDGE
 - PEDESTRIAN BRIDGE
 - PEDESTRIAN WALKWAY
 - PEDESTRIAN UNDERPASS
 - VEHICLE UNDERPASS
 - TUNNEL
 - CULVERT
 - PIPE
 - INTERSTATE HIGHWAY
 - US NUMBERED HIGHWAY
 - NC NUMBERED HIGHWAY
 - US NUMBERED BICYCLE ROUTE
 - NC NUMBERED BICYCLE ROUTE
 - INTERSTATE INTERSECTION NUMBER
 - SECONDARY ROAD NUMBER
 - UTILITY LINE
 - RAILROAD LINE
 - RAILROAD STATION
 - PORT AREA
 - STATE LINE
 - COUNTY LINE
 - MUNICIPALITY BOUNDARIES
 - CITY LIMITS
 - TOWN WITH ABBREVIATED NAME
 - SARROCK CREEK OR STREAM
 - WATER BODY OR CREEK
 - RESERVOIR, POND, LAKE, W/ BE AND DAM OR DAM WITH LOCK
 - WATERFALL
 - SWAMP
 - COMMUNITY
 - COUNTY HEAD
 - SCHOOL
 - COLLEGE OR UNIVERSITY
 - HOSPITAL
 - COAST GUARD STATION
 - CEREBE
 - CEREBE WITH CEMETERY
 - CEMETERY
 - PARK STATION
 - CORRECTION OR PENAL INSTITUTION
 - SQUARE
 - SEWAGE TREATMENT PLANT
 - INDUSTRIAL GARAGE OR MAIN YARD
 - HOUSING DEV. OR DIST. OFFICE
 - MILITARY POST
 - WEIR STATION
 - FABRICATION
 - HISTORICAL SITE
 - POINTS OF INTEREST
 - POST OFFICE
 - STATE FOREST
 - LIGHTHOUSE
 - MOUNTAIN SUMMIT
 - SOON INTERLAP
 - OVERLOOK
 - REST AREA
 - VISION CTR. REST AREA
 - WELCOME CTR. REST AREA
 - AIRPORT
 - MILITARY AIRPORT
 - NATIONAL STATE FOREST BOUNDARY
 - WILDLIFE REFUGE
 - NATIONAL STATE PARK BOUNDARY
 - GAME LANDS BOUNDARY
 - MILITARY RESERVATION BOUNDARY
 - INDIAN RESERVATION BOUNDARY



RUTHERFORD COUNTY
NORTH CAROLINA

PREPARED BY THE
NORTH CAROLINA DEPARTMENT OF TRANSPORTATION
OPERATIONS PROGRAM MANAGEMENT UNIT - MAPPING SECTION
IN COOPERATION WITH THE
U.S. DEPARTMENT OF TRANSPORTATION
FEDERAL HIGHWAY ADMINISTRATION



NORTH CAROLINA PLANE COORDINATE SYSTEM
LAMBERT CONFORMAL CONIC PROJECTION