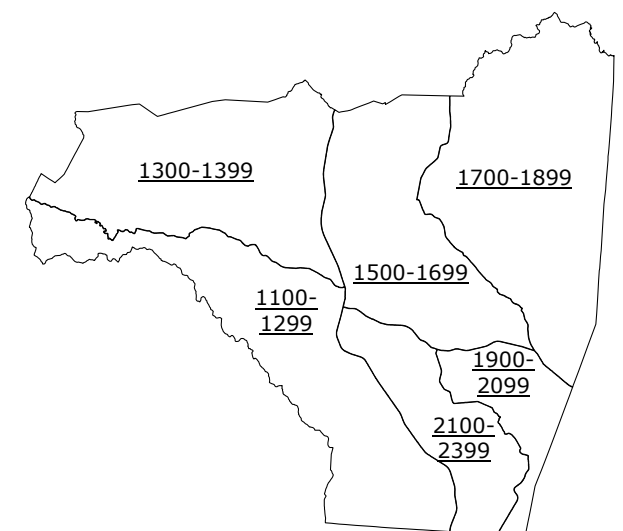


Caroleen  
0.5 0  
MILES

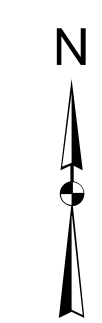


West of Rutherford



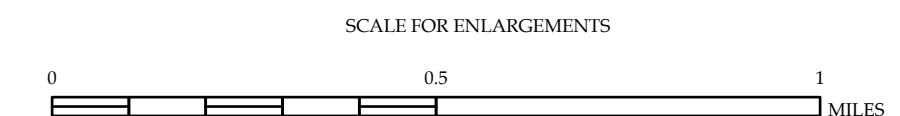
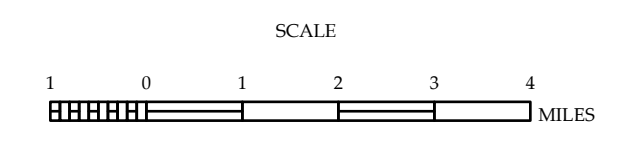
LEGEND

- INTERSTATE US NC Double Fly Undeveloped Fly
- US NUMBERED HIGHWAY
- NC NUMBERED HIGHWAY
- US NUMBERED BI-CYCLE ROUTE
- NC NUMBERED BI-CYCLE ROUTE
- INTERSTATE INTERCHANGE NUMBER
- SECONDARY ROAD NUMBER
- TILITY LINES
- RAILROAD LINE
- RAILROAD STATION
- RAILROAD BRIDGE
- STATE LINE
- COUNTY LINE
- UNINCORPORATED URBAN BOUNDARIES
- CITY LIMITS
- FERRY ROUTE AND RAMP
- NARROW RIVER OR STREAM
- WIDE RIVER OR STREAM
- RESERVOIR, POND OR LAKE W/ ISLAND
- DAM OR DAM WITH LOCK
- WATERFALL
- SWAMP
- COMBUNITY
- COUNTY SEAT
- SCHOOL
- COLLEGE OR UNIVERSITY
- HOSPITAL
- COAST GUARD STATION
- CHURCH
- CHURCH WITH CEMETERY
- CEMETERY
- PARK STATION
- CORRECTION OR PENAL INSTITUTION
- GUARDY
- MEN OR PIT
- HIGHWAY SIGNAL OR SIGNAL YARD
- HIGHWAY DIV. OR REST OFFICE
- MILITARY POST
- WELDER STATION
- FARMHOUSES
- RECREATIONAL SITE
- POINTS OF INTEREST
- POST OFFICE
- STATE FOREST
- LEAD MINES
- MOUNTAIN SUMMIT
- MOUNTAIN GAP
- OVERLOOK
- REST AREA
- VIEWING OR REST AREA
- WELCOME CENTER AREA
- SHRINE
- MILITARY AIRPORT
- NATIONAL STATE FOREST BOUNDARY
- WILDLIFE REFUGE
- NATIONAL STATE PARK BOUNDARY
- GAME LANDS BOUNDARY
- MILITARY RESERVATION BOUNDARY
- INDIAN RESERVATION BOUNDARY



RUTHERFORD COUNTY  
NORTH CAROLINA

PREPARED BY THE  
NORTH CAROLINA DEPARTMENT OF TRANSPORTATION  
OPERATIONS PROGRAM MANAGEMENT UNIT - MAPPING SECTION  
IN COOPERATION WITH THE  
U.S. DEPARTMENT OF TRANSPORTATION  
FEDERAL HIGHWAY ADMINISTRATION



COPIES OF THIS MAP ARE AVAILABLE TO THE  
PUBLIC AT NOMINAL COST. CONTACT US TO ORDER:  
[mapping.northcarolina.gov](http://mapping.northcarolina.gov)  
<http://connect.ncdot.gov/resources/State-Mapping/Pages/Ordering-Maps.aspx>  
(919) 834-4480

TERMS OF USE: The Mapping Section's goal is to provide the most accurate and current information possible. Map data is compiled from numerous sources with varying dates of publication and map accuracy standards. As a result, the accuracy, currency, and completeness of the data provided will vary. The North Carolina Department of Transportation shall not be held liable for any errors in the map data. This map is printed and contained to be a legal document. The information shown on this map was last updated in May 2024. For digital copies of this map or additional map products, visit <http://connect.ncdot.gov/resources/State-Mapping>.

NORTH CAROLINA PLANE COORDINATE SYSTEM  
LAMBERT CONFORMAL CONIC PROJECTION