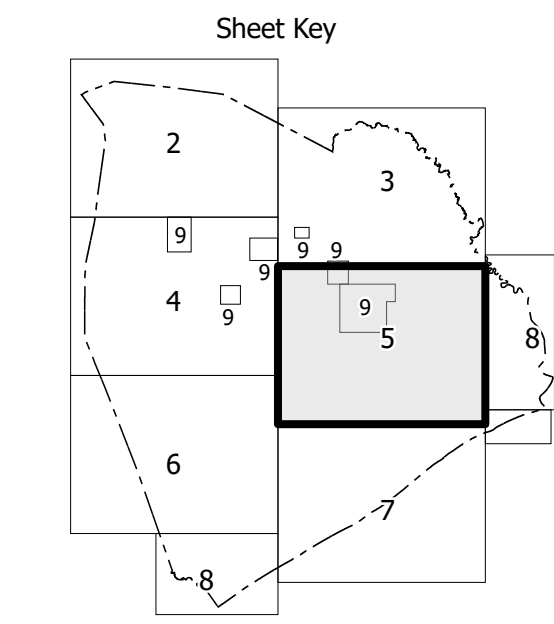
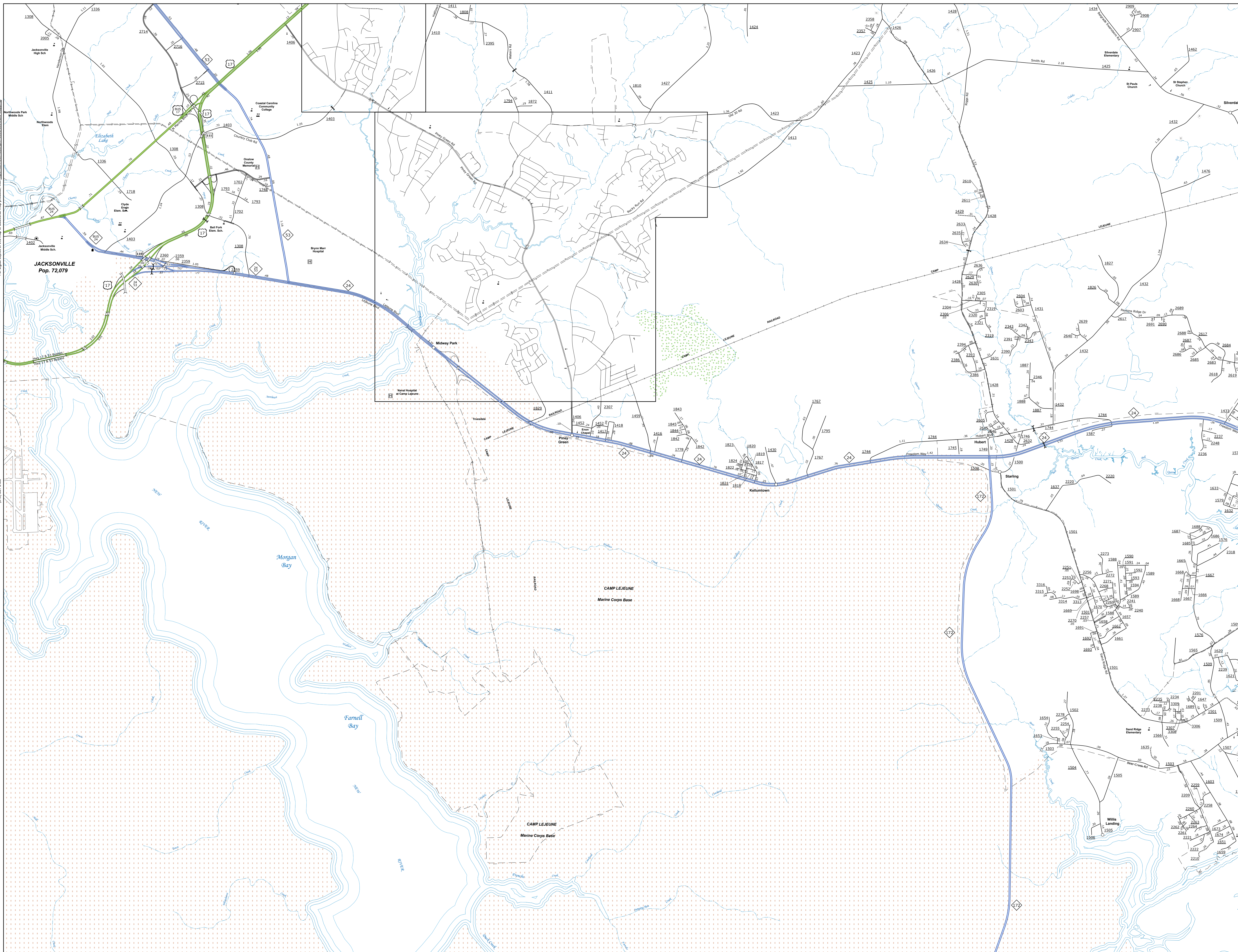


TERMS OF USE: The Mapping Section's goal is to provide the most accurate and current information possible. Map data is compiled from the data provided by users. The North Carolina Department of Transportation does not have liability for any errors or omissions in the map data. This map is for informational purposes only. For additional map products, visit www.ncdot.gov/transportation/Mapping/Products/Products.aspx.

COPYIES OF THIS MAP ARE AVAILABLE TO THE PUBLIC. FOR MORE INFORMATION, CONTACT US AT: maps@ncdot.gov OR CALL 1-800-368-6888.



- LEGEND**
- INTERSTATE US NC
 - DECIDED HWY
 - UNDECIDED HWY
 - ROUTE 17
 - ROUTE 24
 - ROUTE 53
 - ROUTE 98
 - ROUTE 111
 - ROUTE 124
 - ROUTE 142
 - ROUTE 170
 - ROUTE 223
 - ROUTE 225
 - ROUTE 230
 - ROUTE 231
 - ROUTE 232
 - ROUTE 233
 - ROUTE 234
 - ROUTE 235
 - ROUTE 236
 - ROUTE 237
 - ROUTE 238
 - ROUTE 239
 - ROUTE 240
 - ROUTE 241
 - ROUTE 242
 - ROUTE 243
 - ROUTE 244
 - ROUTE 245
 - ROUTE 246
 - ROUTE 247
 - ROUTE 248
 - ROUTE 249
 - ROUTE 250
 - ROUTE 251
 - ROUTE 252
 - ROUTE 253
 - ROUTE 254
 - ROUTE 255
 - ROUTE 256
 - ROUTE 257
 - ROUTE 258
 - ROUTE 259
 - ROUTE 260
 - ROUTE 261
 - ROUTE 262
 - ROUTE 263
 - ROUTE 264
 - ROUTE 265
 - ROUTE 266
 - ROUTE 267
 - ROUTE 268
 - ROUTE 269
 - ROUTE 270
 - ROUTE 271
 - ROUTE 272
 - ROUTE 273
 - ROUTE 274
 - ROUTE 275
 - ROUTE 276
 - ROUTE 277
 - ROUTE 278
 - ROUTE 279
 - ROUTE 280
 - ROUTE 281
 - ROUTE 282
 - ROUTE 283
 - ROUTE 284
 - ROUTE 285
 - ROUTE 286
 - ROUTE 287
 - ROUTE 288
 - ROUTE 289
 - ROUTE 290
 - ROUTE 291
 - ROUTE 292
 - ROUTE 293
 - ROUTE 294
 - ROUTE 295
 - ROUTE 296
 - ROUTE 297
 - ROUTE 298
 - ROUTE 299
 - ROUTE 300
 - ROUTE 301
 - ROUTE 302
 - ROUTE 303
 - ROUTE 304
 - ROUTE 305
 - ROUTE 306
 - ROUTE 307
 - ROUTE 308
 - ROUTE 309
 - ROUTE 310
 - ROUTE 311
 - ROUTE 312
 - ROUTE 313
 - ROUTE 314
 - ROUTE 315
 - ROUTE 316
 - ROUTE 317
 - ROUTE 318
 - ROUTE 319
 - ROUTE 320
 - ROUTE 321
 - ROUTE 322
 - ROUTE 323
 - ROUTE 324
 - ROUTE 325
 - ROUTE 326
 - ROUTE 327
 - ROUTE 328
 - ROUTE 329
 - ROUTE 330
 - ROUTE 331
 - ROUTE 332
 - ROUTE 333
 - ROUTE 334
 - ROUTE 335
 - ROUTE 336
 - ROUTE 337
 - ROUTE 338
 - ROUTE 339
 - ROUTE 340
 - ROUTE 341
 - ROUTE 342
 - ROUTE 343
 - ROUTE 344
 - ROUTE 345
 - ROUTE 346
 - ROUTE 347
 - ROUTE 348
 - ROUTE 349
 - ROUTE 350
 - ROUTE 351
 - ROUTE 352
 - ROUTE 353
 - ROUTE 354
 - ROUTE 355
 - ROUTE 356
 - ROUTE 357
 - ROUTE 358
 - ROUTE 359
 - ROUTE 360
 - ROUTE 361
 - ROUTE 362
 - ROUTE 363
 - ROUTE 364
 - ROUTE 365
 - ROUTE 366
 - ROUTE 367
 - ROUTE 368
 - ROUTE 369
 - ROUTE 370
 - ROUTE 371
 - ROUTE 372
 - ROUTE 373
 - ROUTE 374
 - ROUTE 375
 - ROUTE 376
 - ROUTE 377
 - ROUTE 378
 - ROUTE 379
 - ROUTE 380
 - ROUTE 381
 - ROUTE 382
 - ROUTE 383
 - ROUTE 384
 - ROUTE 385
 - ROUTE 386
 - ROUTE 387
 - ROUTE 388
 - ROUTE 389
 - ROUTE 390
 - ROUTE 391
 - ROUTE 392
 - ROUTE 393
 - ROUTE 394
 - ROUTE 395
 - ROUTE 396
 - ROUTE 397
 - ROUTE 398
 - ROUTE 399
 - ROUTE 400

**ONSLOW COUNTY
NORTH CAROLINA**

PREPARED BY THE
NORTH CAROLINA DEPARTMENT OF TRANSPORTATION
OPERATIONS PROGRAM MANAGEMENT UNIT - MAPPING SECTION
IN COOPERATION WITH THE
U.S. DEPARTMENT OF TRANSPORTATION
FEDERAL HIGHWAY ADMINISTRATION

SCALE
1" = 1 MILE

NORTH CAROLINA PLANE COORDINATE SYSTEM
LAMBERT CONFORMAL CONIC PROJECTION