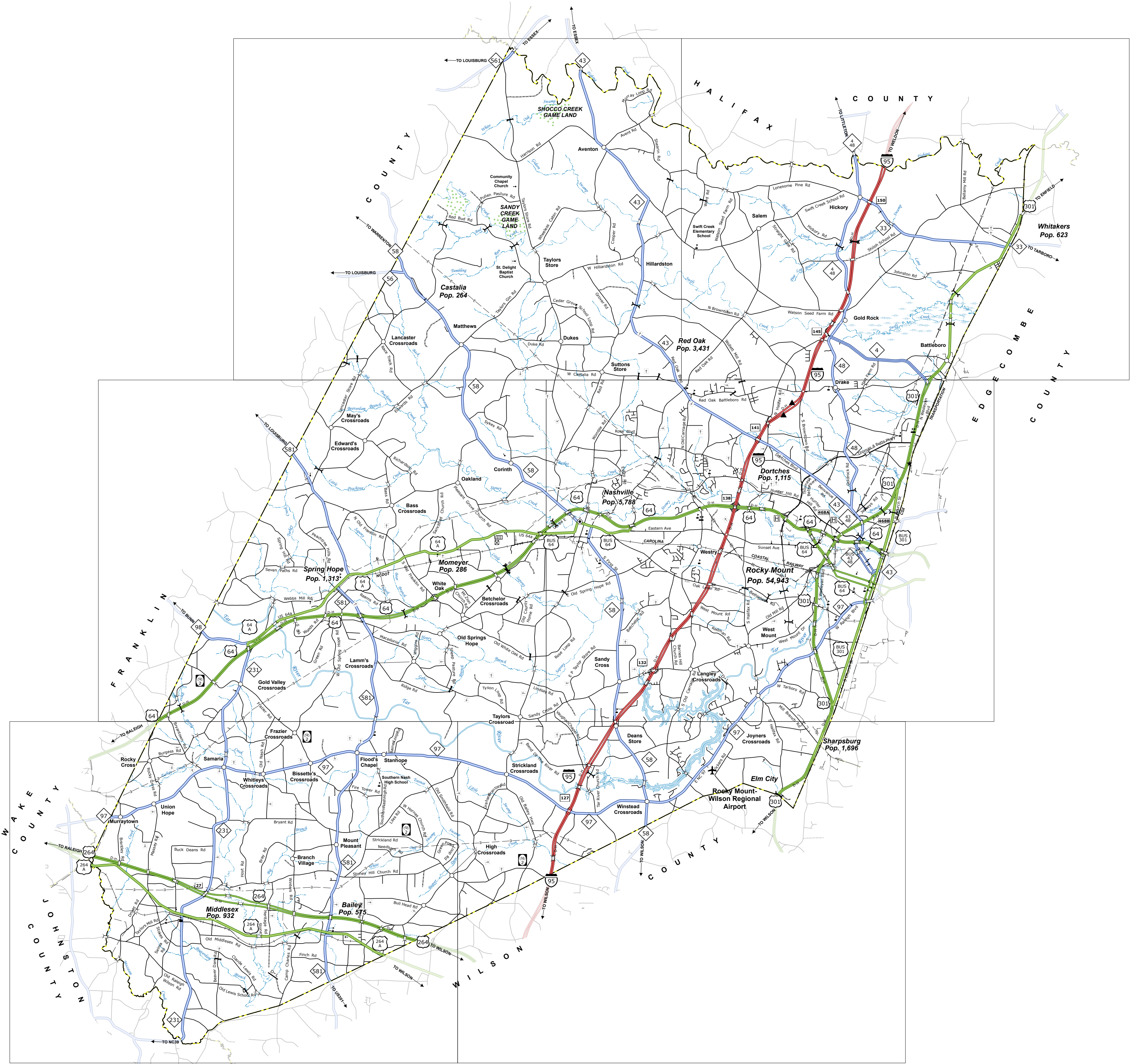
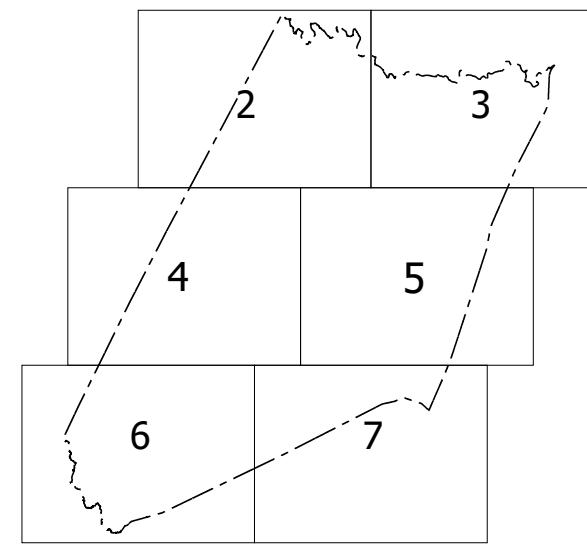


THIS MAP IS THE PROPERTY OF THE NORTH CAROLINA DEPARTMENT OF TRANSPORTATION. IT IS TO BE USED ONLY FOR THE PURPOSES FOR WHICH IT WAS DESIGNED. THE USER ASSUMES ALL LIABILITY FOR ANY DAMAGE OR INJURY RESULTING FROM THE USE OF THIS MAP. THE NORTH CAROLINA DEPARTMENT OF TRANSPORTATION IS NOT RESPONSIBLE FOR ANY SUCH DAMAGE OR INJURY.

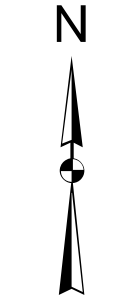
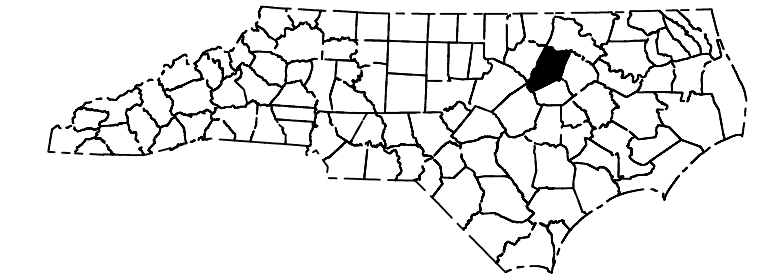
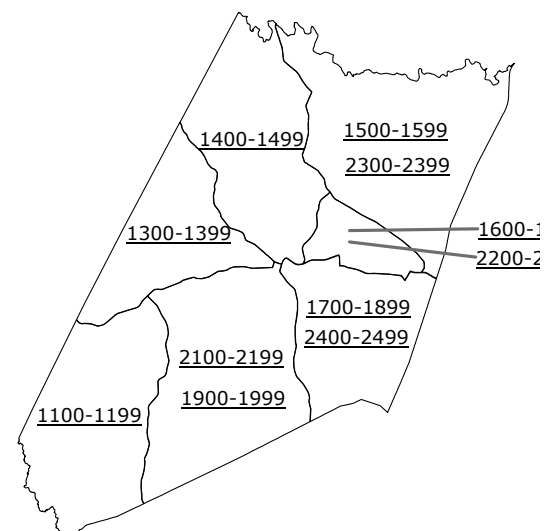
FOR A FULL LIST OF THE NORTH CAROLINA DEPARTMENT OF TRANSPORTATION'S PRODUCTS, VISIT [www.ncdot.gov](http://www.ncdot.gov). FOR A FULL LIST OF THE NORTH CAROLINA DEPARTMENT OF TRANSPORTATION'S CONTRACTORS, VISIT [www.ncdot.gov/contractors](http://www.ncdot.gov/contractors).

Sheet Key



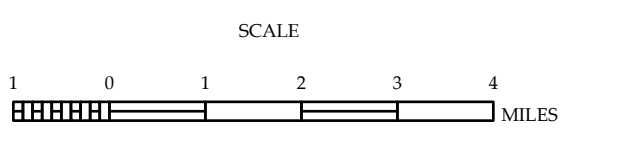
LEGEND

- INTERSTATE US NC
- Divided Hwy
- Undivided Hwy
- BLUE RIDGE PARKWAY
- UNPAVED UNCLASSIFIED ROAD
- HIGHWAY BRIDGE
- NON-SYSTEM ROAD
- PROPOSED/PLANNED BRIDGE ROAD
- PROTECTED/LOCK-AWAY
- INTERESTED/CONTRACT
- STANDARD ROAD BRIDGE
- RAILROAD BRIDGE
- IRON-SPAN OVERBRIDGE
- PEDESTRIAN BRIDGE
- PEDESTRIAN WALKWAY
- PEDESTRIAN UNDERPASS
- VEHICULAR UNDERPASS
- TUNNEL
- CULVERT
- PYI
- INTERSTATE HIGHWAY
- U.S. NUMBERED HIGHWAY
- N.C. NUMBERED HIGHWAY
- U.S. NUMBERED BI-CYCLE ROUTE
- N.C. NUMBERED BI-CYCLE ROUTE
- INTERSTATE INTERCHANGE NUMBER
- SECONDARY ROAD NUMBER
- UTILITY LINES
- RAILROAD LINES
- RAILROAD STATION
- INSTIT AREA
- STATE LINE
- COUNTY LINE
- CITY LIMITS
- FERRY ROUTE
- NARROW GREEK OR STREAM
- WIDE RIVER OR CREEK
- BEACH, POOL OR LAKE W/ ISLAND
- DAM OR DAM WITH LOCK
- WATERFALL
- SWAMP
- COMMUNITY, TOWN OR CITY CENTER
- COUNTY SEAT
- SCHOOL
- COLLEGE OR UNIVERSITY
- HOSPITAL
- COAST GUARD STATION
- CHURCH
- CHURCH WITH CEMETERY
- CEMETERY
- PRISON STATION
- CORRECTION OR PENAL INSTITUTION
- QUARRY
- MINE OR PIT
- HIGHWAY GARAGE OR MAINT. YARD
- HIGHWAY DEP. OR DIST. OFFICE
- MILITARY POST
- WEIGH STATION
- FABRIQUOUS
- HISTORICAL SITE
- POINTS OF INTEREST
- STATE FOREST
- LIGHTHOUSE
- MONUMENT/SHRINE
- OVERLOOK
- REST AREA
- VISITOR CENTER REST AREA
- WELCOMING CENTER REST AREA
- AIRPORT
- MILITARY AIRPORT
- HELIPAD
- NATIONAL STATE FOREST BOUNDARY
- WILDLIFE REFUGE
- NATIONAL STATE PARK BOUNDARY
- GAME LANDS BOUNDARY
- MILITARY RESERVATION BOUNDARY
- INDIAN RESERVATION BOUNDARY



NASH COUNTY  
NORTH CAROLINA

PREPARED BY THE  
NORTH CAROLINA DEPARTMENT OF TRANSPORTATION  
OPERATIONS PROGRAM MANAGEMENT UNIT - MAPPING SECTION  
IN COOPERATION WITH THE  
U.S. DEPARTMENT OF TRANSPORTATION  
FEDERAL HIGHWAY ADMINISTRATION



NORTH CAROLINA PLANE COORDINATE SYSTEM  
LAMBERT CONFORMAL CONIC PROJECTION