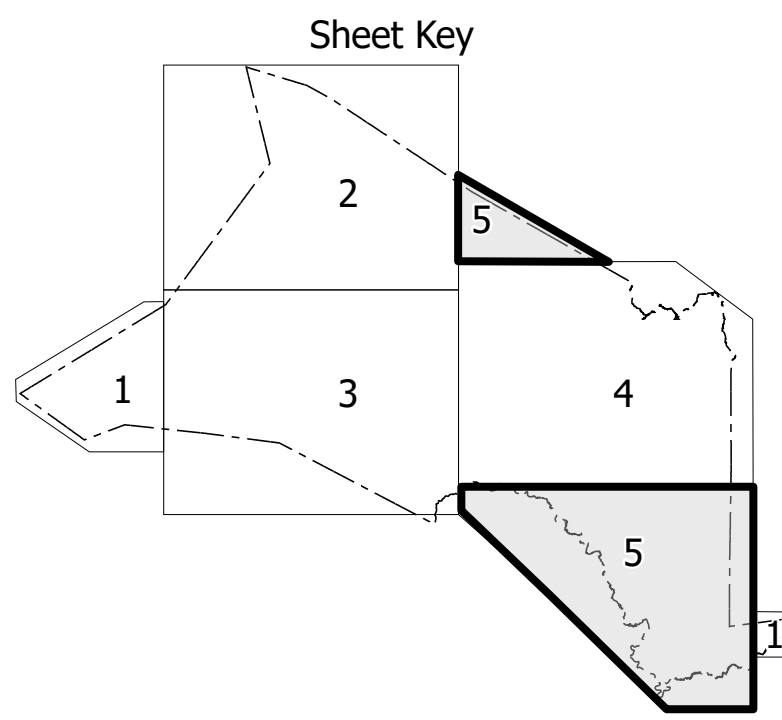
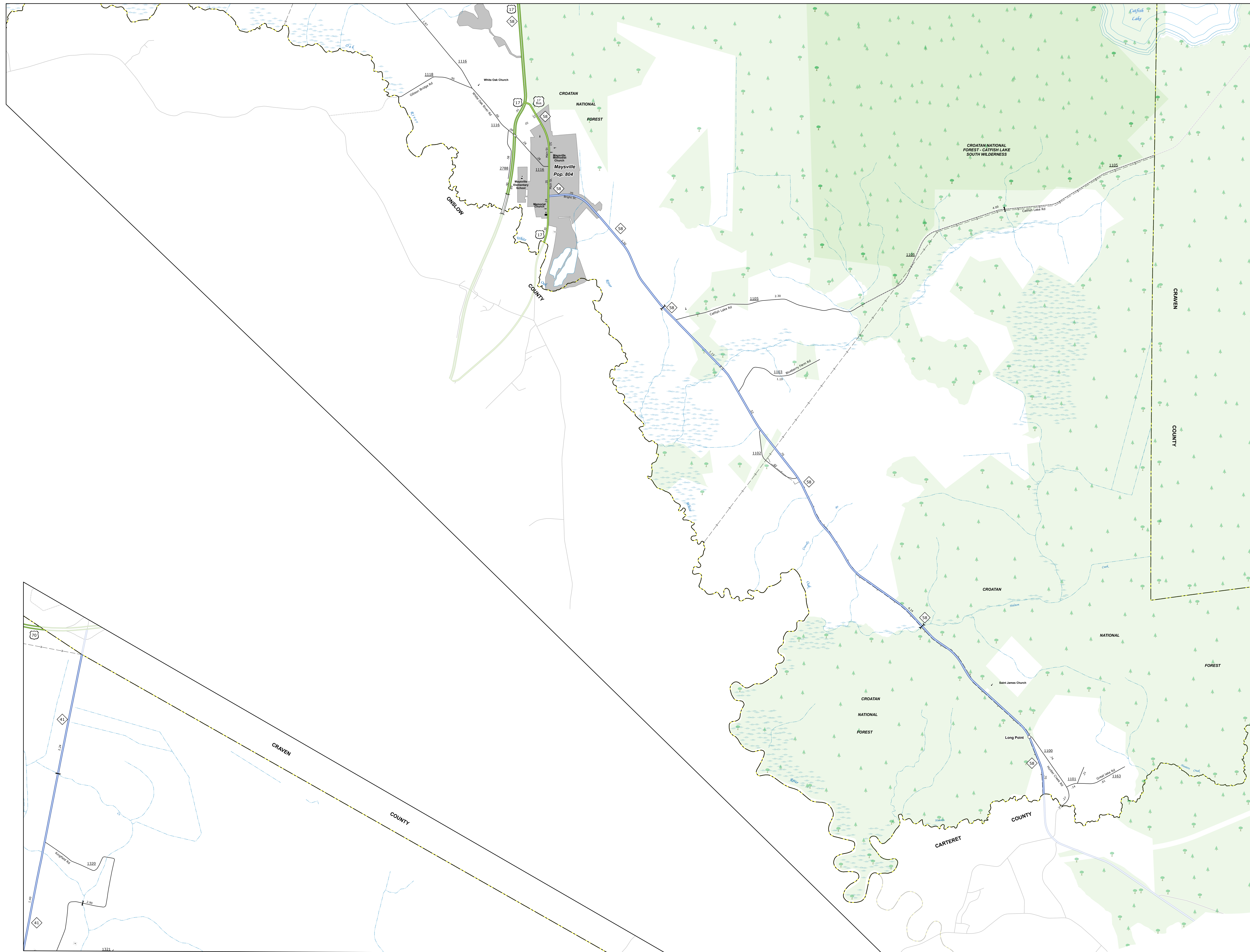


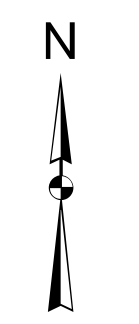
THE NORTH CAROLINA DEPARTMENT OF TRANSPORTATION (NCDOT) HAS COMPLETED THIS PROJECT UNDER THE PROVISIONS OF THE FEDERAL-AID HIGHWAY ACT OF 1956, AS AMENDED. THE NCDOT HAS CONDUCTED THE NECESSARY SURVEYS AND DESIGN WORK TO COMPLETE THIS PROJECT. THE NCDOT HAS CONDUCTED THE NECESSARY SURVEYS AND DESIGN WORK TO COMPLETE THIS PROJECT. THE NCDOT HAS CONDUCTED THE NECESSARY SURVEYS AND DESIGN WORK TO COMPLETE THIS PROJECT.

CONTRACT NO. 1301-10-0001 FOR THE DESIGN AND CONSTRUCTION OF THE PROJECT. THE CONTRACTOR IS RESPONSIBLE FOR THE ACCURACY OF THE DATA AND INFORMATION PROVIDED TO THE NCDOT. THE NCDOT HAS CONDUCTED THE NECESSARY SURVEYS AND DESIGN WORK TO COMPLETE THIS PROJECT.



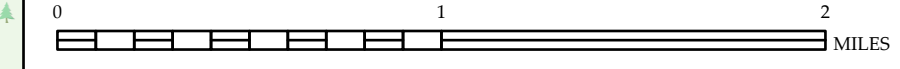
LEGEND

- INTERSTATE US NC Divided Hwy Undivided Hwy
- HEAVY TRUCK PARKWAY
- UNPAVED SURFACE ROAD
- HARD SURFACE ROAD
- PAVED SURFACE ROAD
- PROPOSEDLY DRAWN ROAD
- PREDICTED BY ADJACENT
- INTERSTATE INTERCHANGE
- STANDARD ROAD BRIDGE
- RAILROAD BRIDGE
- DRY SPAN ON BRIDGE
- PIERCEAN BRIDGE
- PIERCEAN WALKWAY
- PIERCEAN UNDERPASS
- VEHICLE UNDERPASS
- TUNNEL
- CULVERT
- PIV
- INTERSTATE HIGHWAY
- US NUMBERED HIGHWAY
- NC NUMBERED HIGHWAY
- US NUMBERED BI-CYCLE ROUTE
- NC NUMBERED BI-CYCLE ROUTE
- INTERSTATE INTERCHANGE NUMBER
- SECONDARY ROAD NUMBER
- UTILITY LINE
- RAILROAD LINE
- RAILROAD STATION
- POST OFFICE
- STATE LINE
- COUNTY LINE
- SMOOTHED URBAN BOUNDARIES
- CITY LIMITS
- FERRY ROUTE AND RAMP
- SARAWAY CREEK OR STREAM
- WATER BODY
- RESERVOIR, POND OR LAKE W/ ISLAND
- INDIAN DAM WITH LOCK
- WATERFALL
- SWAMP
- COMMUNITY
- COUNTY SEAT
- SCHOOL
- COLLEGE OR UNIVERSITY
- HOSPITAL
- COAST GUARD STATION
- CHURCH
- CHURCH WITH CEMETERY
- CEMETERY
- PARK STATION
- CORRECTION OR PENAL INSTITUTION
- QUARRY
- SHED OR PIT
- INDUSTRIAL GARAGE OR SALES YARD
- HIGHWAY DIV. OR DIST. OFFICE
- MILITARY POST
- WRESTLING STATION
- FARMHOUSE
- HISTORICAL SITE
- POINTS OF INTEREST
- POST OFFICE
- STATE FOREST
- LIGHTHOUSE
- MOUNTAIN SUMMIT
- MOUNTAIN GAP
- OVERLOOK
- REST AREA
- VISITOR CENTER AREA
- WELCOME CENTER AREA
- AIRPORT
- MILITARY AIRPORT
- NATIONAL STATE FOREST BOUNDARY
- WILDLIFE REFUGE
- NATIONAL STATE PARK BOUNDARY
- GAME LANDS BOUNDARY
- MILITARY RESERVATION BOUNDARY
- INDIAN RESERVATION BOUNDARY



**JONES COUNTY
NORTH CAROLINA**

PREPARED BY THE
NORTH CAROLINA DEPARTMENT OF TRANSPORTATION
OPERATIONS PROGRAM MANAGEMENT UNIT - MAPPING SECTION
IN COOPERATION WITH THE
U.S. DEPARTMENT OF TRANSPORTATION
FEDERAL HIGHWAY ADMINISTRATION
SCALE



NORTH CAROLINA PLANE COORDINATE SYSTEM
LAMBERT CONFORMAL CONIC PROJECTION