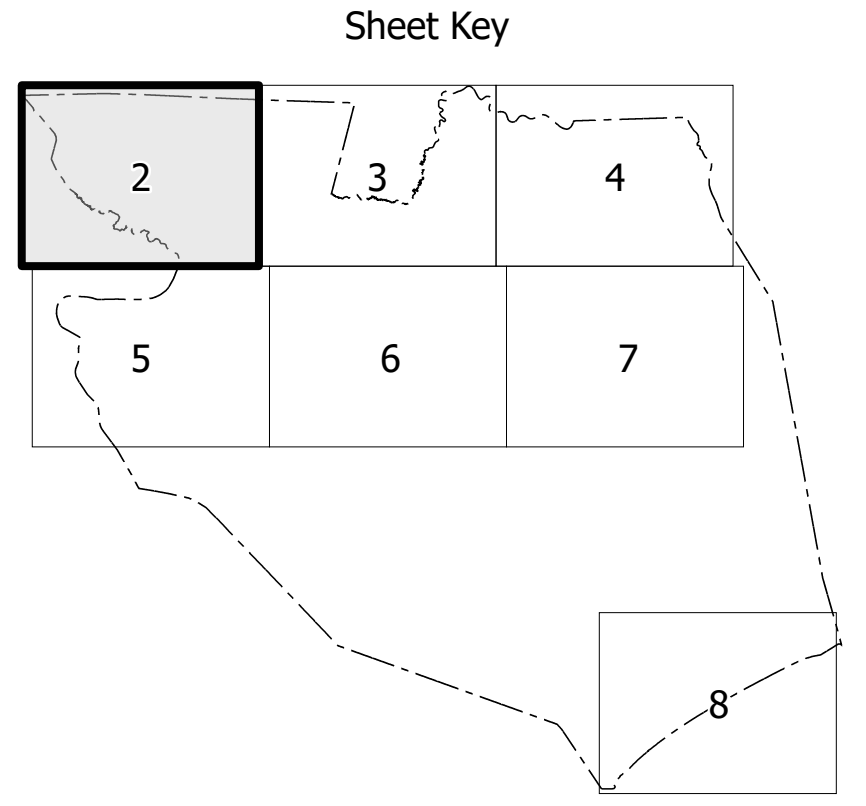
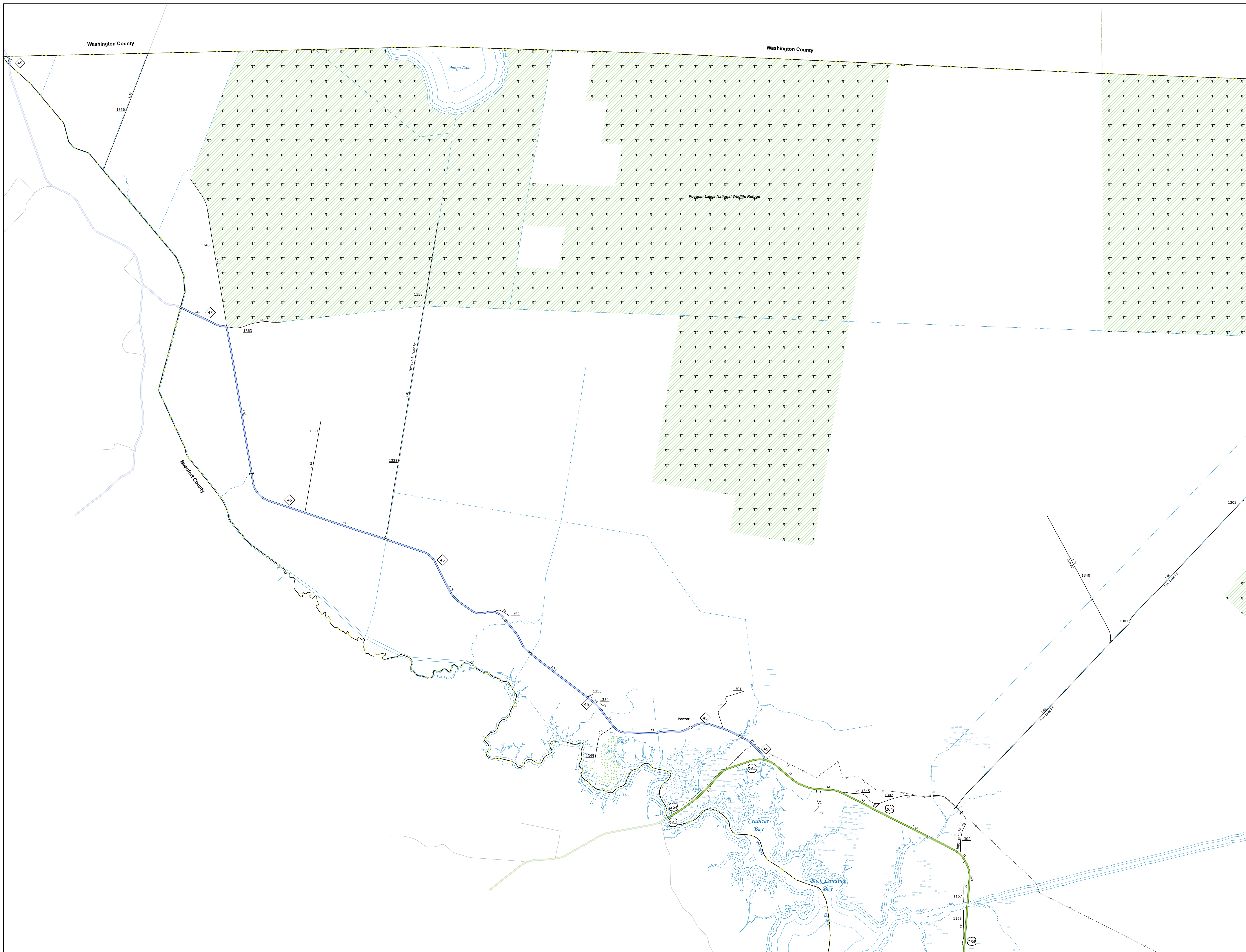


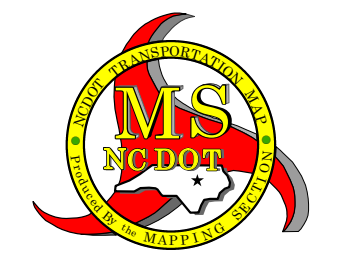
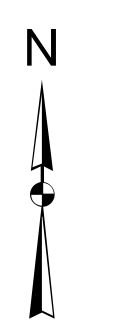
THE STATE OF NORTH CAROLINA. The Mapping Section's goal is to provide the most accurate and current information possible. Map data is compiled from numerous sources with varying degrees of authority and may not be perfectly accurate. As a result, the accuracy, reliability, and completeness of these data cannot be guaranteed. The information shown on this map was last updated in March 2024. For digital copies of this map or additional information, visit <https://www.ncdot.gov/transportation/transportation-services/transportation-services.aspx>.

COPIES OF THIS MAP ARE AVAILABLE TO THE PUBLIC AT THE OFFICE OF THE STATE ARCHIVIST, 100 EAST COLLETT STREET, RALEIGH, NC 27601. (919) 737-4400. <https://www.nc.gov/archives/>



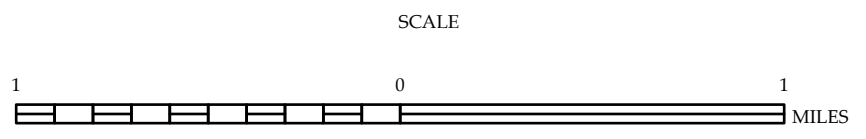
LEGEND

- INTERSTATE US NC Divided Hwy Undivided Hwy
- BLUE RIDGE PARKWAY
- UNPAVED ROAD/UNPAVED ROAD
- ROAD SHOULDERS
- NON-SYSTEM ROAD
- PROVISIONALLY DESIGN ROAD
- PROTECTIVE CURB
- INTERSECTION
- STANDARD ROAD BRIDGE
- RAILROAD BRIDGE
- DRAW SPAN ON BRIDGE
- PIEDMONT BRIDGE
- PIEDMONT UNDERPASS
- VIADUCT UNDERPASS
- TUNNEL
- CULVERT
- PIV
- INTERSTATE HIGHWAY
- U.S. NUMBERED HIGHWAY
- U.S. NUMBERED HIGHWAY
- U.S. NUMBERED BI-CYCLE ROUTE
- N.C. NUMBERED BI-CYCLE ROUTE
- INTERSTATE INTERCHANGE NUMBER
- SECONDARY ROAD NUMBER
- UTILITY LINES
- RAILROAD LINE
- RAILROAD STATION
- INSET AREA
- STATE LINE
- COUNTY LINE
- CITY LIMITS
- CHURCH
- FERRY ROUTE AND RAMP
- NARROW CREEK OR STREAM
- WIDE RIVER OR CREEK
- RESERVOIR, POND OR LAKE IN ISLAND
- DAM OR DAM WITH LOCK
- WATERFALL
- SWAMP
- COURTNEY
- COUNTY SEAT
- SCHOOL
- COLLEGE OR UNIVERSITY
- HOSPITAL
- COAST GUARD STATION
- CHURCH
- CHURCH WITH CEMETERY
- CEMETERY
- PRISON STATION
- CORRECTIONS OR PENAL INSTITUTION
- QUARRY
- MNS OR PTT
- HIGHWAY CARPOOL OR SHUTTLE YARD
- HIGHWAY DIV. OR DIST. OFFICE
- MILITARY POST
- WATER STATION
- FARMS
- HISTORICAL SITE
- POINTS OF INTEREST
- STATE FOREST
- LIGHTHOUSE
- MOUNTAIN SUMMIT
- MOUNTAIN GAP
- OTHELORIC
- REST AREA
- VISITOR CENTER AREA
- WILDLIFE REST AREA
- AIRPORT
- MILITARY AIRPORT
- NATIONAL STATE FOREST BOUNDARY
- WILDLIFE REFUGE
- NATIONAL STATE PARK BOUNDARY
- GAME LANDS BOUNDARY
- MILITARY RESERVATION BOUNDARY
- INDIAN RESERVATION BOUNDARY



**HYDE COUNTY
NORTH CAROLINA**

PREPARED BY THE
NORTH CAROLINA DEPARTMENT OF TRANSPORTATION
OPERATIONS PROGRAM MANAGEMENT UNIT - MAPPING SECTION
IN COOPERATION WITH THE
U.S. DEPARTMENT OF TRANSPORTATION
FEDERAL HIGHWAY ADMINISTRATION



NORTH CAROLINA PLANE COORDINATE SYSTEM
LAMBERT CONFORMAL CONIC PROJECTION