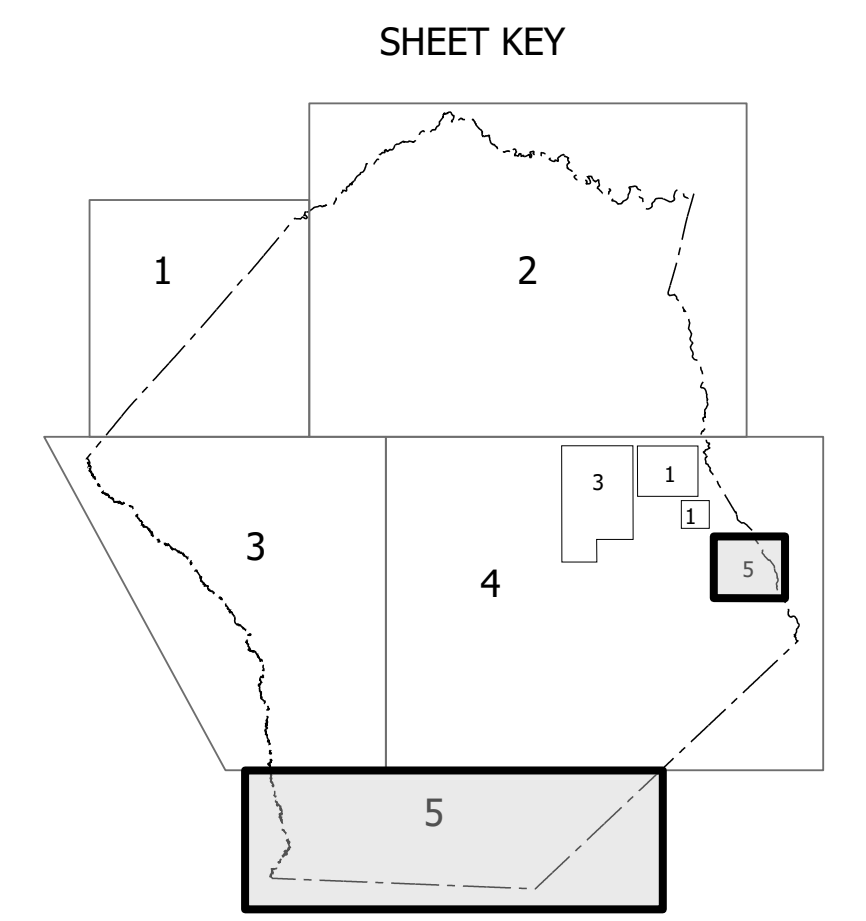
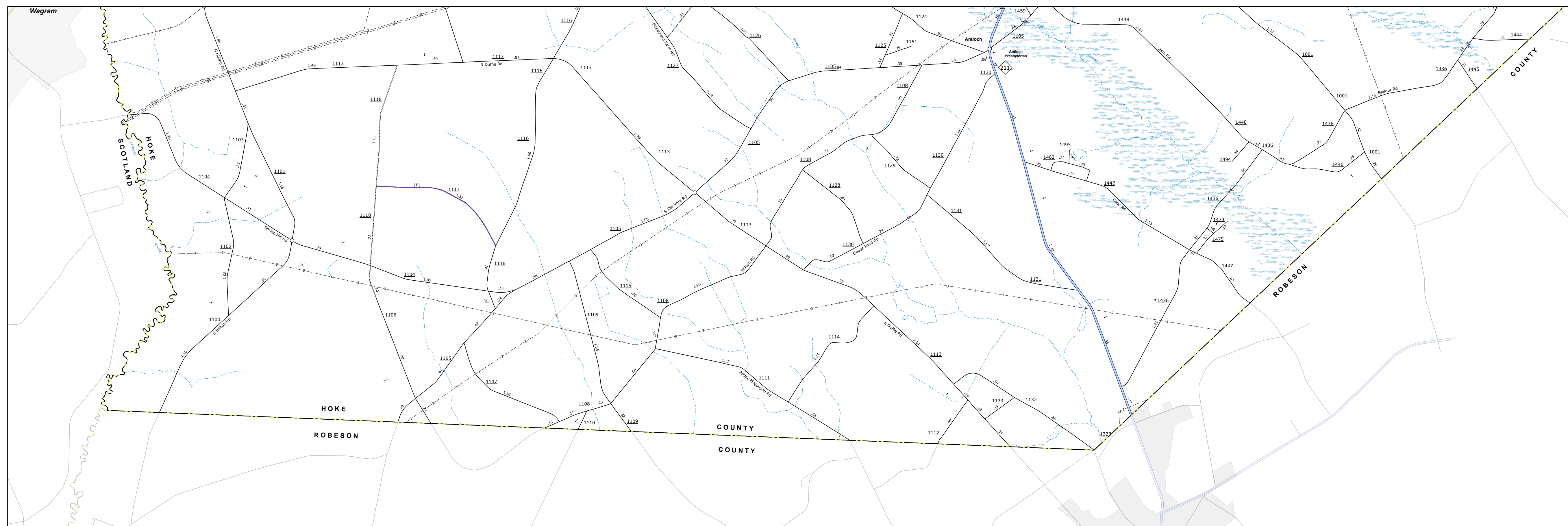
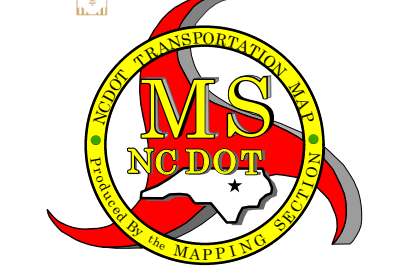
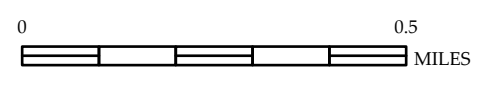
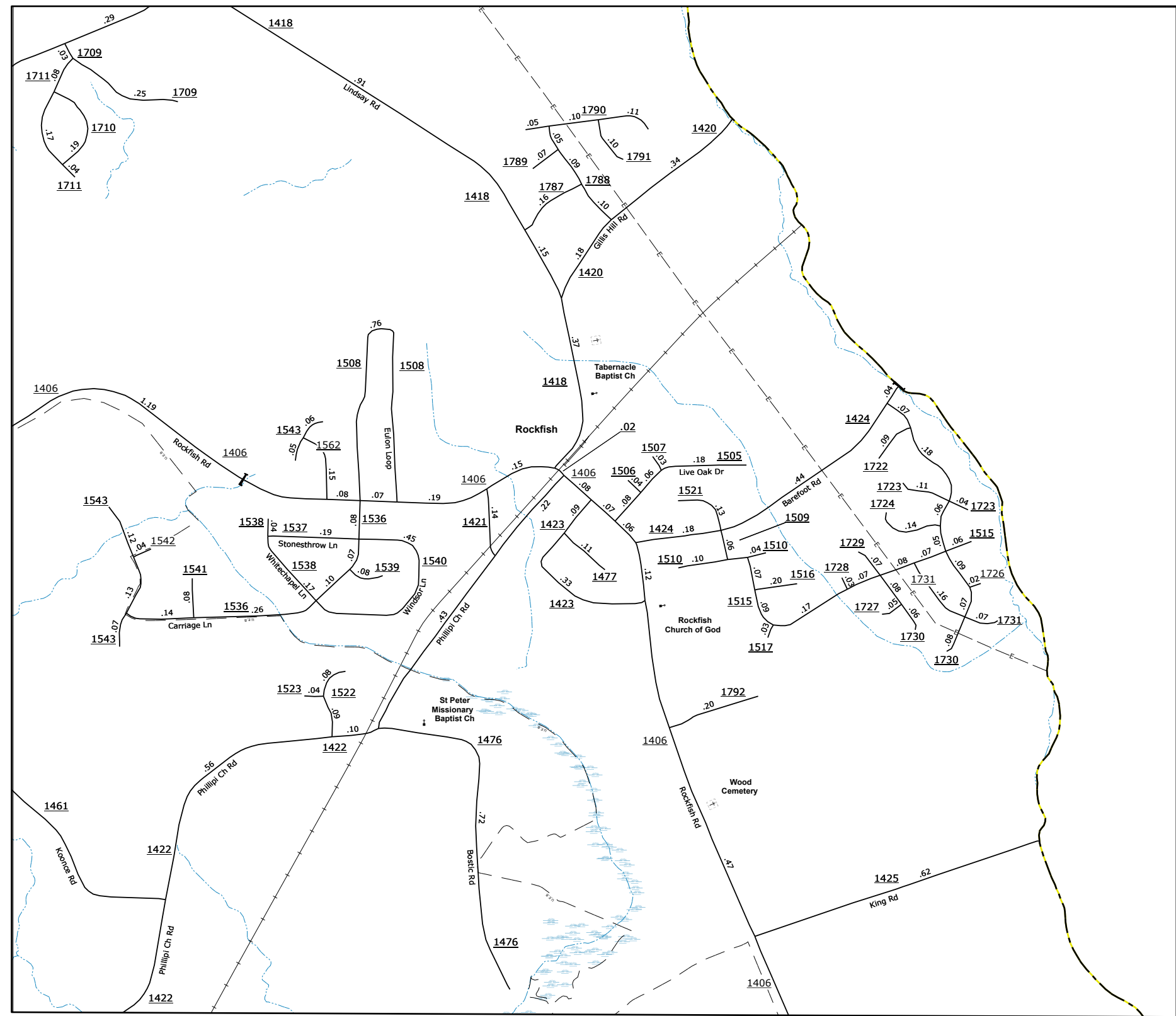


THIS MAP IS THE PROPERTY OF THE STATE OF NORTH CAROLINA. IT IS TO BE USED ONLY FOR THE PURPOSES FOR WHICH IT WAS PREPARED. THE STATE OF NORTH CAROLINA DOES NOT WARRANT THE ACCURACY OF THE INFORMATION SHOWN ON THIS MAP. THE INFORMATION SHOWN ON THIS MAP IS BASED ON THE BEST AVAILABLE DATA AS OF THE DATE OF PREPARATION. THE STATE OF NORTH CAROLINA DOES NOT WARRANT THE ACCURACY OF THE INFORMATION SHOWN ON THIS MAP. THE INFORMATION SHOWN ON THIS MAP IS BASED ON THE BEST AVAILABLE DATA AS OF THE DATE OF PREPARATION.

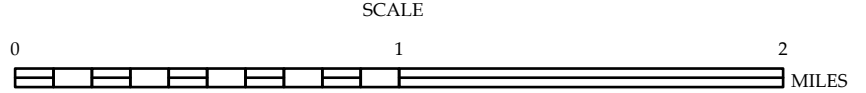


- LEGEND**
- INTERSTATE US NC Divided Hwy
  - INTERSTATE US NC Undivided Hwy
  - BLUE RIDGE PARKWAY
  - UNPAVED SURFACED ROAD
  - HARD SURFACED ROAD
  - NON-SYSTEM ROAD
  - PROVISIONALLY DRAWN ROAD
  - PROTECTED LOCATION
  - INTERSECTION DISTANCE
  - STANDARD ROAD BRIDGE
  - RAIL ROAD BRIDGE
  - DRAW SPAN ON BRIDGE
  - PEDESTRIAN BRIDGE
  - PEDESTRIAN WALKWAY
  - PEDESTRIAN UNDERPASS
  - VEHICULAR UNDERPASS
  - TUNNEL
  - CULVERT
  - PIPE
  - INTERSTATE HIGHWAY
  - U.S. NUMBERED HIGHWAY
  - S.C. NUMBERED HIGHWAY
  - U.S. NUMBERED BI-CYCLE ROUTE
  - N.C. NUMBERED BI-CYCLE ROUTE
  - INTERSTATE INTERCHANGE NUMBER
  - SECONDARY ROAD NUMBER
  - UTILITY LINES
  - RAILROAD LINE
  - RAILROAD STATION
  - INSET AREA
  - STATE LINE
  - COUNTY LINE
  - SUBDIVISION BOUNDARIES
  - CITY LIMITS
  - FERRY ROUTE AND RAMP
  - NARROW CREEK OR STREAM
  - WIDE RIVER OR CREEK
  - RESERVOIR, POND OR LAKE W/ ISLAND
  - DAM OR DAM WITH LOCK
  - WATERFALL
  - WATERFALL
  - SWAMP
  - COMMUNITY
  - COUNTY SEAT
  - SCHOOL
  - COLLEGE OR UNIVERSITY
  - HOSPITAL
  - COAST GUARD STATION
  - CHURCH
  - CHURCH WITH CEMETERY
  - CEMETERY
  - PUBLIC STATION
  - CORRECTION OR PENAL INSTITUTION
  - QUARRY
  - MINE OR PIT
  - HIGHWAY GARAGE OR MAINT. YARD
  - HIGHWAY DIV. OR DIST. OFFICE
  - MILITARY POST
  - WEIGHT STATION
  - FABRICATIONS
  - HISTORICAL SITE
  - POINTS OF INTEREST
  - POST OFFICE
  - STATE FOREST
  - LIGHTHOUSE
  - MOUNTAIN SUMMIT
  - MOUNTAIN GAP
  - OVERLOOK
  - REST AREA
  - VISITOR CTR. REST AREA
  - WELCOME CTR. REST AREA
  - AIRPORT
  - MILITARY AIRPORT
  - NATIONAL / STATE FOREST BOUNDARY
  - WILDLIFE REFUGE
  - NATIONAL / STATE PARK BOUNDARY
  - GAME LANDS BOUNDARY
  - MILITARY RESERVATION BOUNDARY
  - INDIAN RESERVATION BOUNDARY



**HOKE COUNTY  
NORTH CAROLINA**

PREPARED BY THE  
NORTH CAROLINA DEPARTMENT OF TRANSPORTATION  
OPERATIONS PROGRAM MANAGEMENT UNIT - MAPPING SECTION  
IN COOPERATION WITH THE  
U.S. DEPARTMENT OF TRANSPORTATION  
FEDERAL HIGHWAY ADMINISTRATION



NORTH CAROLINA PLANE COORDINATE SYSTEM  
LAMBERT CONFORMAL CONIC PROJECTION

COPIES OF THIS MAP ARE AVAILABLE TO THE PUBLIC AT NOMINAL COST. CONTACT US TO ORDER.  
1-800-368-3346  
WWW.NCDOT.GOV