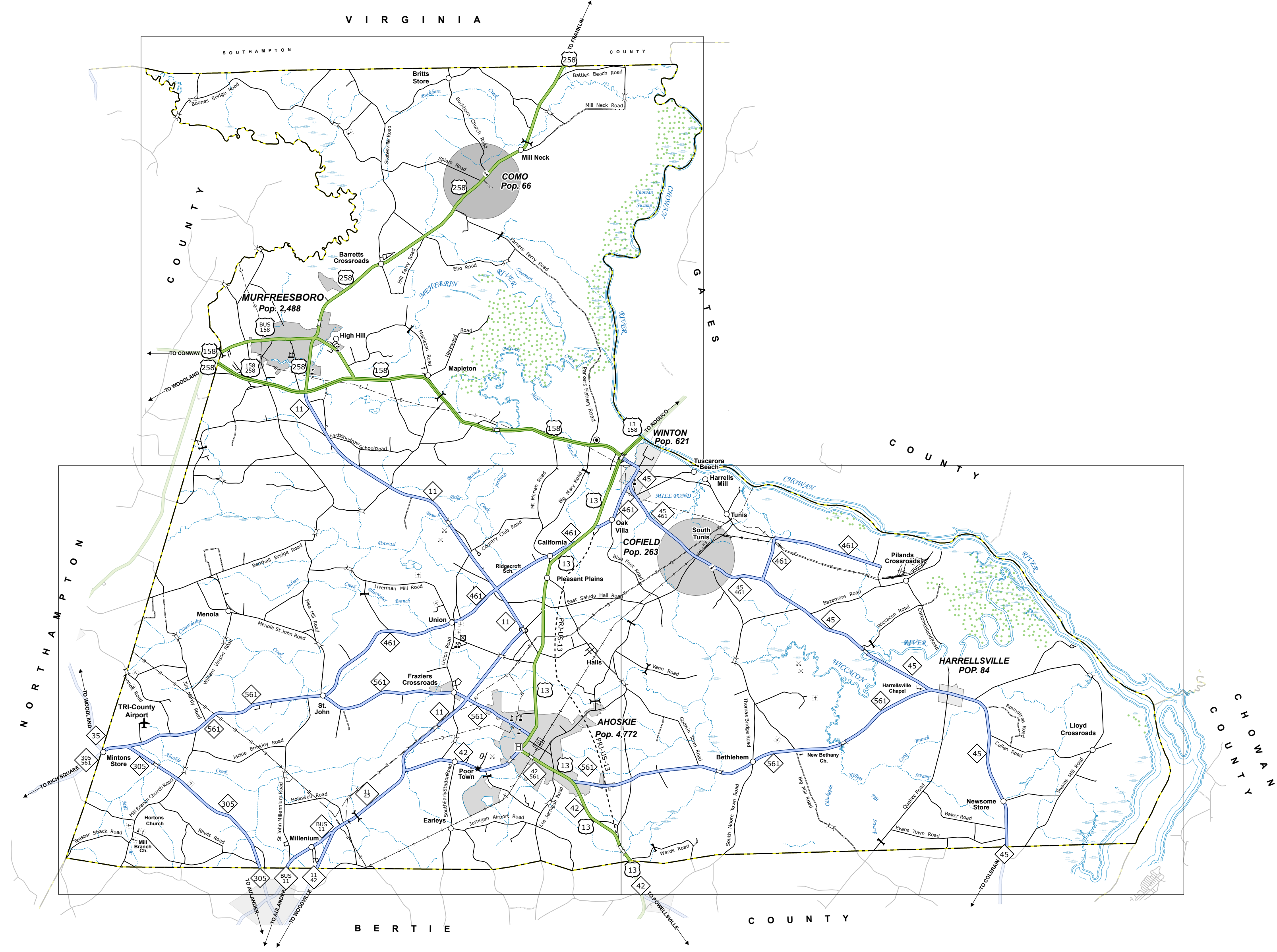
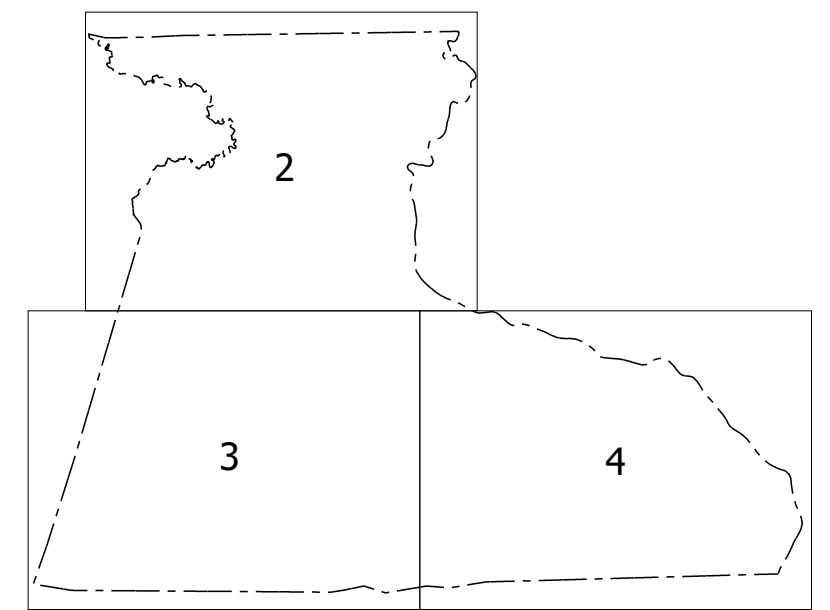
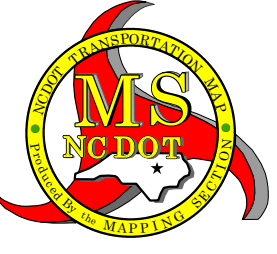
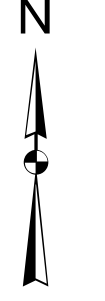
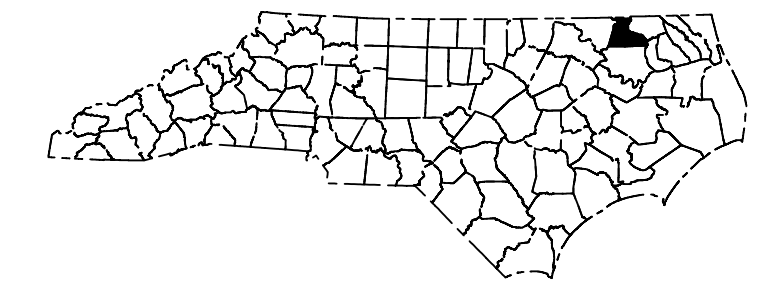
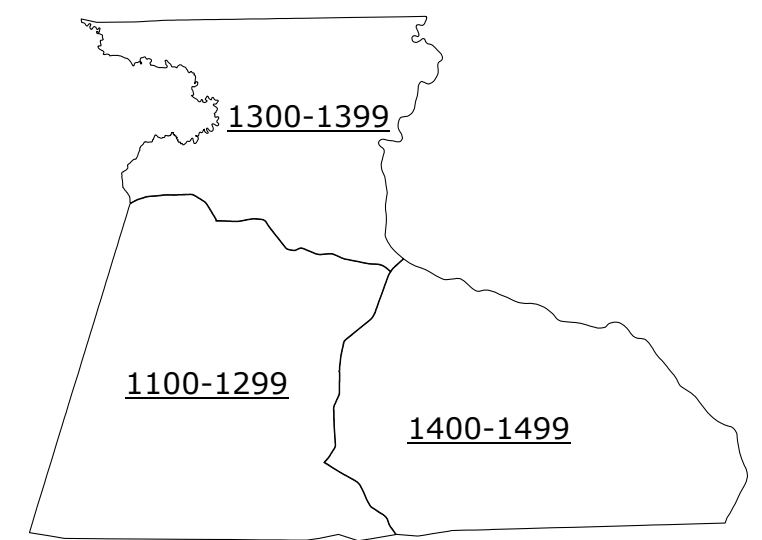


Sheet Key



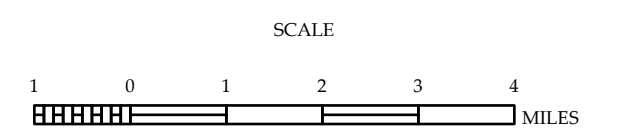
LEGEND

- INTERSTATE US NC Divided Hwy Undivided Hwy
- ROUTE WEDGE PARKWAY
- CORNER-TO-CORNER ROAD
- HARD SURFACED ROAD
- PAVEMENT ROAD
- PROVISIONALLY GRAINED ROAD
- PROVISED DAILY ATION
- INTERSTATE INTERCHANGE
- STANDARD ROAD BRIDGE
- RAILROAD BRIDGE
- TRAVEL SPAN TO BRIDGE
- PEDESTRIAN BRIDGE
- PEDESTRIAN WALKWAY
- PEDESTRIAN UNDERPASS
- VEHICLE UNDERPASS
- TUNNEL
- VIADUCT
- PIV
- INTERSTATE HIGHWAY
- US-NUMBERED HIGHWAY
- NC-NUMBERED HIGHWAY
- US-NUMBERED BI-CYCLE ROUTE
- NC-NUMBERED BI-CYCLE ROUTE
- INTERSTATE INTERCHANGE NUMBER
- SECONDARY ROAD NUMBER
- UTILITY LINE
- RAILROAD LINE
- RAILROAD STATION
- POST AREA
- STATE LINE
- COUNTY LINE
- SMOOTHED URBAN BOUNDARIES
- CITY LIMITS
- FERRY ROUTE AND RAMP
- SAWPOW CREEK OR STREAM
- WIDE RIVER OR CREEK
- RESERVOIR, POND OR LAKE W/ ISLAND
- DAM OR DAM WITH LOCK
- WATERFALL
- SWAMP
- COMMUNITY
- COUNTY SEAT
- SCHOOL
- COLLEGE OR UNIVERSITY
- BRIDGE
- COAST GUARD STATION
- CHEMIST
- CENTER WITH CEMETERY
- CHEMISTRY
- PARK STATION
- CORRECTION OR PENAL INSTITUTION
- QUARRY
- MINE OR PIT
- HIGHWAY CABLE OR MOUNTAIN YARD
- RAILROAD DEP. OR DEST. OFFICE
- MILITARY POST
- WEIGH STATION
- BARRIOQUIN
- HISTORICAL SITE
- POINTS OF INTEREST
- POUNCE
- STATE FOREST
- RECREATIONAL
- MOUNTAIN SUMMIT
- MOUNTAIN GAP
- CORNER
- REST AREA
- VIADUCT REST AREA
- WELCOME REST AREA
- BARROW
- MILITARY AIRPORT
- NATIONAL STATE FOREST BOUNDARY
- WILDLIFE REFUGE
- NATIONAL STATE PARK BOUNDARY
- GAME LANDS BOUNDARY
- MILITARY RESERVATION BOUNDARY
- INDIAN RESERVATION BOUNDARY



**HERTFORD COUNTY
NORTH CAROLINA**

PREPARED BY THE
NORTH CAROLINA DEPARTMENT OF TRANSPORTATION
OPERATIONS PROGRAM MANAGEMENT UNIT - MAPPING SECTION
IN COOPERATION WITH THE
U.S. DEPARTMENT OF TRANSPORTATION
FEDERAL HIGHWAY ADMINISTRATION



NORTH CAROLINA PLANE COORDINATE SYSTEM
LAMBERT CONFORMAL CONIC PROJECTION

COPIES OF THIS MAP ARE AVAILABLE TO THE
PUBLIC AT NOMINAL COST. CONTACT US TO ORDER:
<https://connect.ncdot.gov/resources/State/Mapping/Pages/Ordering-Maps.aspx>
(919) 884-4949

TERMS OF USE: The Mapping Section's goal is to provide the most accurate and current information possible. Map data is compiled from numerous sources with varying dates of publication and map accuracy standards. As a result, the accuracy, currency, and completeness of the data provided will vary. The North Carolina Department of Transportation shall not be held liable for any errors in the map data. This map cannot be construed to be a legal document. The information shown on this map was last updated in March 2024. For digital copies of this map or additional map products, visit <https://connect.ncdot.gov/resources/State/Mapping>.