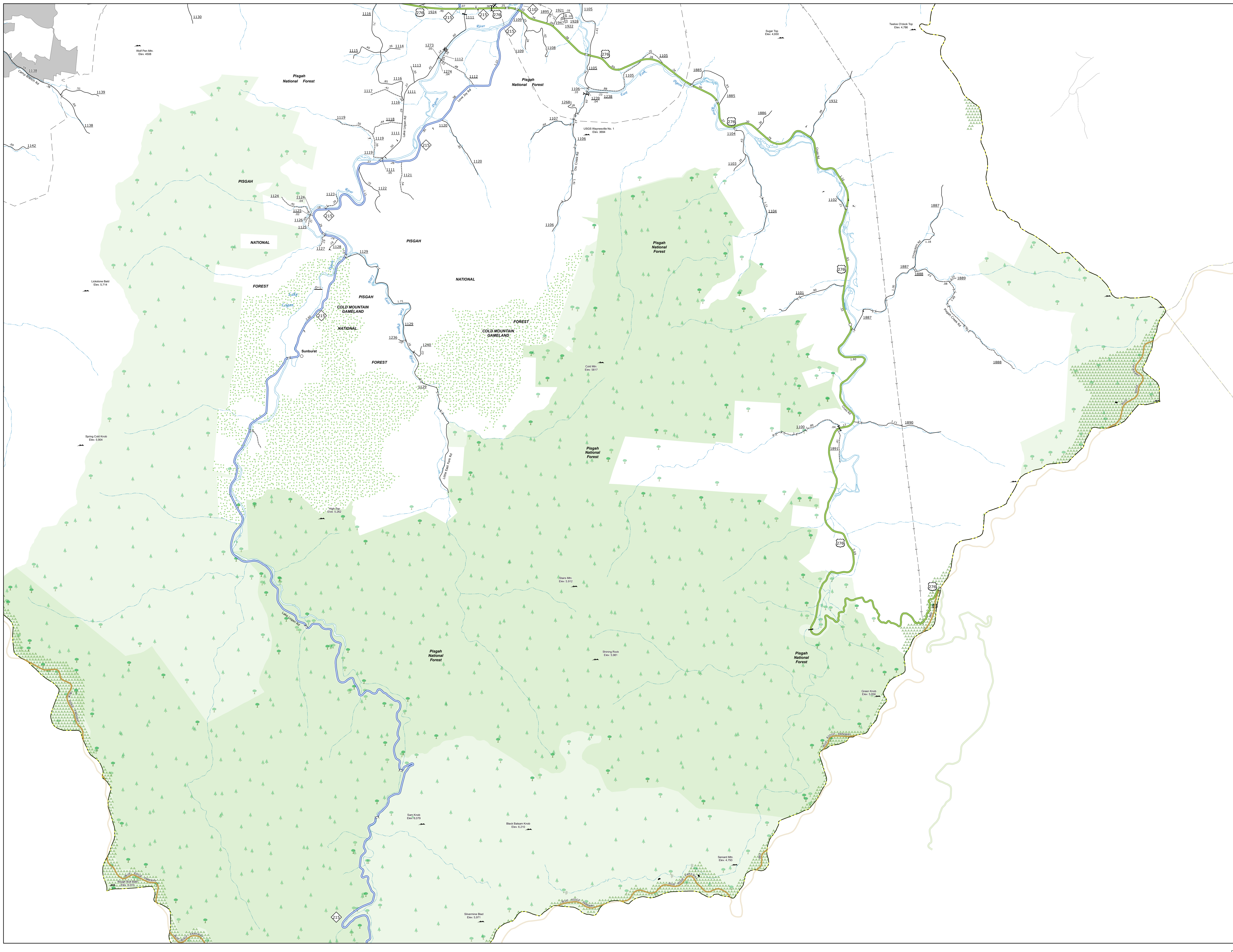
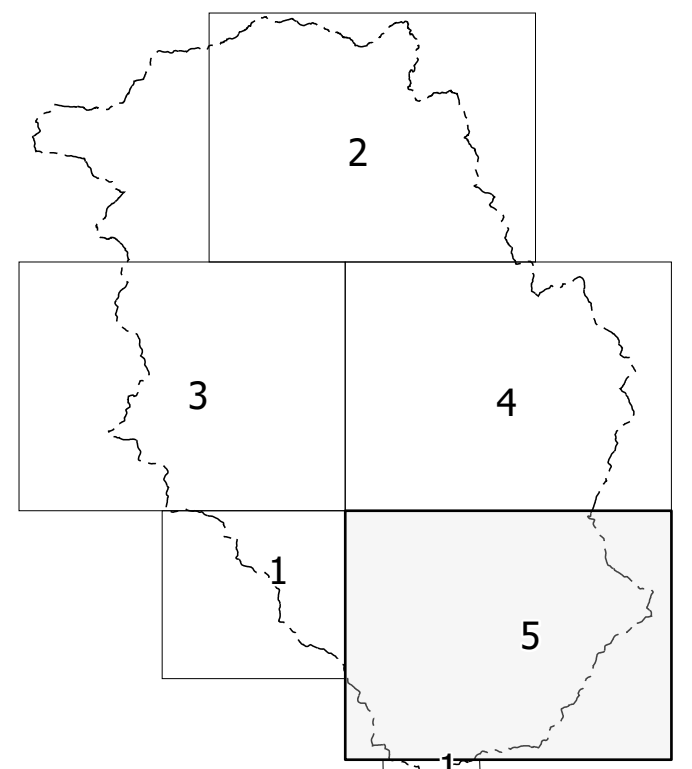


TERMS OF USE: This Mapping Section's goal is to provide the most accurate and current information possible. Map data is compiled from the most current available sources. The North Carolina Department of Transportation and the U.S. Department of Transportation are not responsible for errors or for any consequences arising from the use of the information contained on this map. The information on this map was derived from the most current available data. For additional information, contact the Mapping Section at 703-948-2000.

COPIES OF THIS MAP ARE AVAILABLE TO THE PUBLIC AT NO CHARGE. CONTACT US TO ORDER: 703-948-2000 OR VISIT OUR WEBSITE AT: www.ncdot.gov



Sheet Key



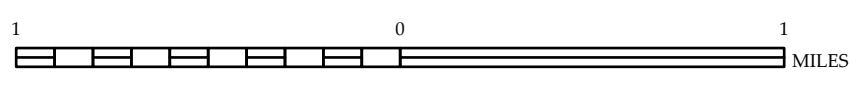
LEGEND

- INTERSTATE - NC
- INTERSTATE - US
- DISCOUNTED Hwy
- UNDISCOUNTED Hwy
- BLUE RIDGE PARKWAY
- CONCRETE OR GRAVEL ROAD
- PAVED SURFACED ROAD
- NON-SYSTEM ROAD
- PROFESSIONALLY DRAWN ROAD
- PROFESSIONAL LOCATION
- INTERSECTION BREAK
- STANDARD ROAD BRIDGE
- RAILROAD BRIDGE
- DRAW SPAN ON BRIDGE
- FEEDSTREAM UNDERPASS
- TRUCK LANE UNDERPASS
- TUNNEL
- RAILROAD
- RAILROAD STATION
- RAILROAD TRACK
- STATE LINE
- COUNTY LINE
- CITY LIMITS
- FERRY ROUTE
- NARROW CREEK OR STREAM
- WIDE RIVER OR CREEK
- RESERVOIR, POND OR LAKE W/ ISLAND
- DAM OR DAM WATER LAKE
- WATERFALL
- SWAMP
- COMMUNITY, TOWN OR CITY CENTER
- COUNTY SEAT
- SCHOOL
- COLLEGE OR UNIVERSITY
- HOSPITAL
- COURT HOUSE
- CHURCH
- CHURCH WITH CEMETERY
- CEMETERY
- PARK STATION
- CORRECTION OR PENAL INSTITUTION
- QUARRY
- MINOR OR PVI
- HIGHWAY GARAGE OR MAINT. YARD
- HIGHWAY DIST. OR DIST. OFFICE
- MILITARY POST
- FIRE STATION
- FIREHOUSE
- HISTORICAL SITE
- POINTS OF INTEREST
- STATE FOREST
- LIGHTHOUSE
- MOUNTAIN SUMMIT
- OVERLOOK
- REST AREA
- VISITOR CTR REST AREA
- WELCOME CTR REST AREA
- AIRPORT
- MILITARY AIRPORT
- FIELD OFFICE
- NATIONAL STATE FOREST BOUNDARY
- WILDLIFE REFUGE
- NATIONAL STATE PARK BOUNDARY
- GAME LAND BOUNDARY
- MILITARY RESERVATION BOUNDARY
- INDIAN RESERVATION BOUNDARY



HAYWOOD COUNTY NORTH CAROLINA

PREPARED BY THE
NORTH CAROLINA DEPARTMENT OF TRANSPORTATION
OPERATIONS PROGRAM MANAGEMENT UNIT - MAPPING SECTION
IN COOPERATION WITH THE
U.S. DEPARTMENT OF TRANSPORTATION
FEDERAL HIGHWAY ADMINISTRATION



NORTH CAROLINA PLANE COORDINATE SYSTEM
LAMBERT CONFORMAL CONIC PROJECTION