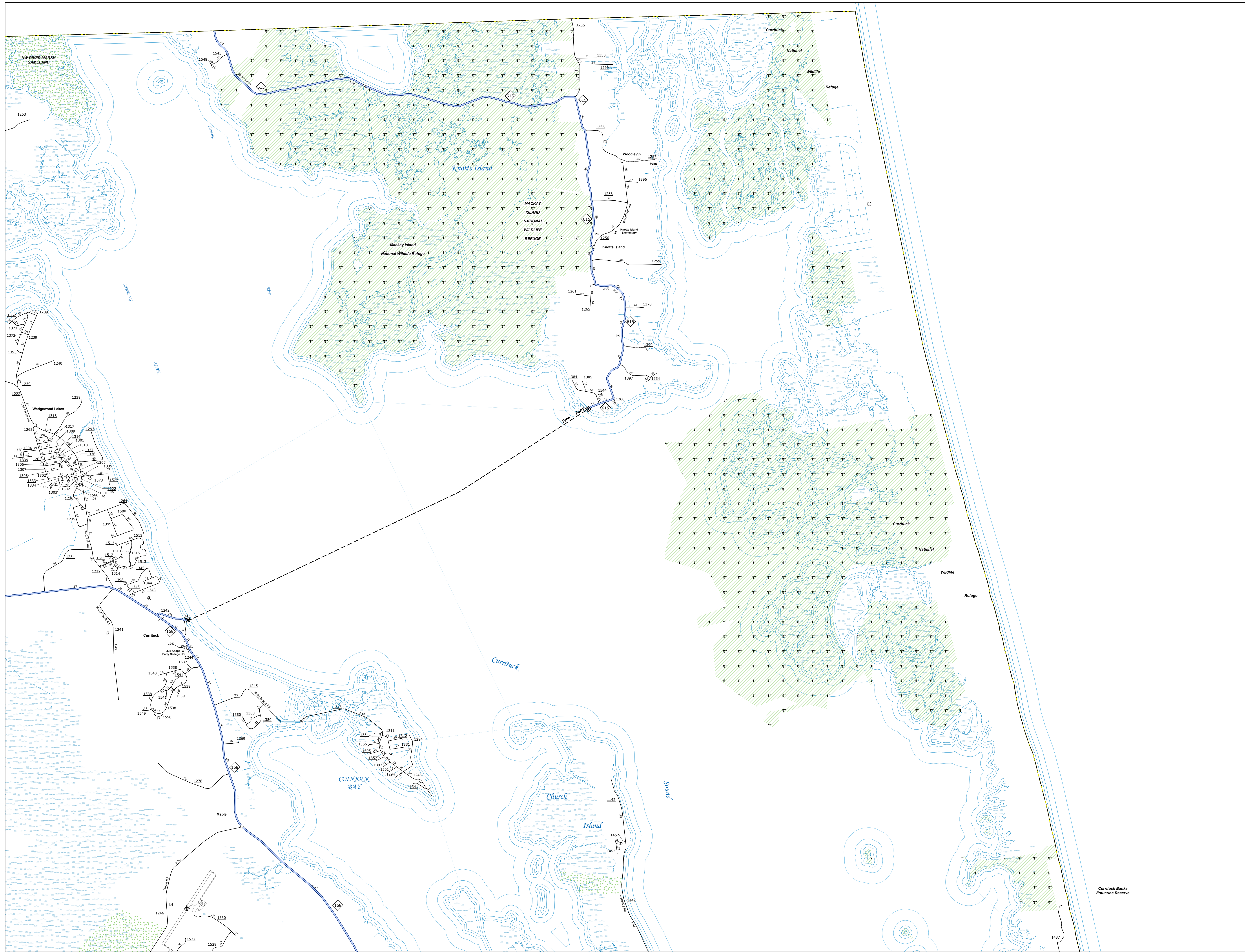
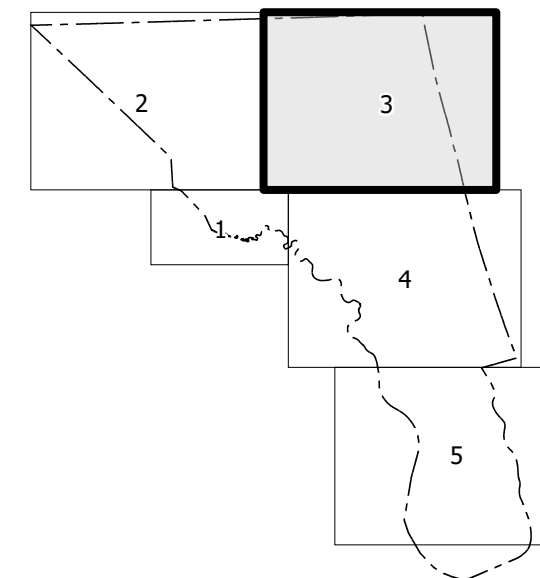


COPIES OF THIS MAP ARE AVAILABLE TO THE
PUBLIC AT NOMINAL COST. CONTACT US TO ORDER:
mapping@support@ncdot.gov
<https://connect.ncdot.gov/resources/State-Mapping/Pages/Ordering-Maps.aspx>
(919) 834-8480



Sheet Key



LEGEND

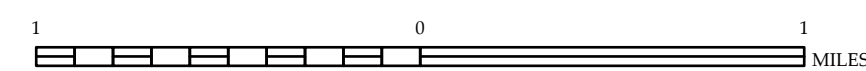
- | | | | | | |
|--|----------------------------------|----|----|--|-----------|
| | INTERSTATE | US | NC | | Disputed |
| | STATE ROUTE | | | | Unclaimed |
| | BLUE RIDGE PARKWAY | | | | |
| | UNPAVED UNRESERVED ROAD | | | | |
| | PROPOSED HIGHWAY | | | | |
| | NON-SYSTEM ROAD | | | | |
| | PROBABLY IRON ROAD | | | | |
| | PROBABLY COTTON | | | | |
| | INTERSECTION DISTANCE | | | | |
| | RAILROAD BRIDGE | | | | |
| | TRAILROAD BRIDGE | | | | |
| | PERISTERN BRIDGE | | | | |
| | PERISTERN WALKWAY | | | | |
| | INTEREST OVERPASS | | | | |
| | VEHICULAR OVERPASS | | | | |
| | TUNNEL | | | | |
| | CULVERT | | | | |
| | PIPE | | | | |
| | INTERSTATE HIGHWAY | | | | |
| | U.S. NUMBERED HIGHWAY | | | | |
| | N.C. NUMBERED HIGHWAY | | | | |
| | N.C. NUMBERED BICYCLE ROUTE | | | | |
| | N.C. NUMBERED BIKE ROUTE | | | | |
| | INTEREST INTERSECTION NUMBER | | | | |
| | SECONDARY ROAD NUMBER | | | | |
| | UTILITY LINES | | | | |
| | RAILROAD | | | | |
| | RAILROAD STATION | | | | |
| | RAILROAD | | | | |
| | STATE LINE | | | | |
| | COUNTY LINE | | | | |
| | UNPAVED INTERNATIONAL BOUNDARIES | | | | |
| | CITY LIMITS | | | | |
| | POOR FORT AND RAMP | | | | |
| | NARROW CREEK OR STREAM | | | | |
| | WATER POOL OR LAKES W/INLAND | | | | |
| | ROAD OR DAM WITH CHECK | | | | |
| | WATERSHED | | | | |
| | SWAMP | | | | |
| | COMMUNITY | | | | |
| | SCHOOL | | | | |
| | COLLEGE OR UNIVERSITY | | | | |
| | HOSPITAL | | | | |
| | COST GUARD STATION | | | | |
| | CHURCH | | | | |
| | CHURCH WITH CEMETERY | | | | |
| | CENOTAPH | | | | |
| | PATROL STATION | | | | |
| | CORRECTION OR PENAL INSTITUTION | | | | |
| | MINE OR PIT | | | | |
| | WATER GATE OR MOUNTAIN YARD | | | | |
| | HIWAY BAY OR DIST. OFFICE | | | | |
| | MILITARY POST | | | | |
| | WATER TOWER | | | | |
| | FABRICATION | | | | |
| | WATER TOWER SITE | | | | |
| | POINTS OF INTEREST | | | | |
| | POSSIBLE | | | | |
| | STATE FOREST | | | | |
| | LIGHTHOUSE | | | | |
| | MOUNTAIN SUMMIT | | | | |
| | MOUNTAIN GAP | | | | |
| | REST AREA | | | | |
| | VISITOR REST AREA | | | | |
| | WATER REST AREA | | | | |
| | AIRPORT | | | | |
| | MILITARY AIRPORT | | | | |
| | NATIONAL STATE FOREST BOUNDARY | | | | |
| | WILDLIFE REFUGE | | | | |
| | NATIONAL STATE PARK BOUNDARY | | | | |
| | GAME LANDS BOUNDARY | | | | |
| | MILITARY RESERVATION BOUNDARY | | | | |
| | INDIAN RESERVATION BOUNDARY | | | | |



CURRITUCK COUNTY
NORTH CAROLINA

PREPARED BY THE
NORTH CAROLINA DEPARTMENT OF TRANSPORTATION
OPERATIONS PROGRAM MANAGEMENT UNIT - MAPPING SECTION
IN COOPERATION WITH THE
U.S. DEPARTMENT OF TRANSPORTATION
FEDERAL HIGHWAY ADMINISTRATION

SCALE



NORTH CAROLINA PLANE COORDINATE SYSTEM
LAMBERT CONFORMAL CONIC PROJECTION