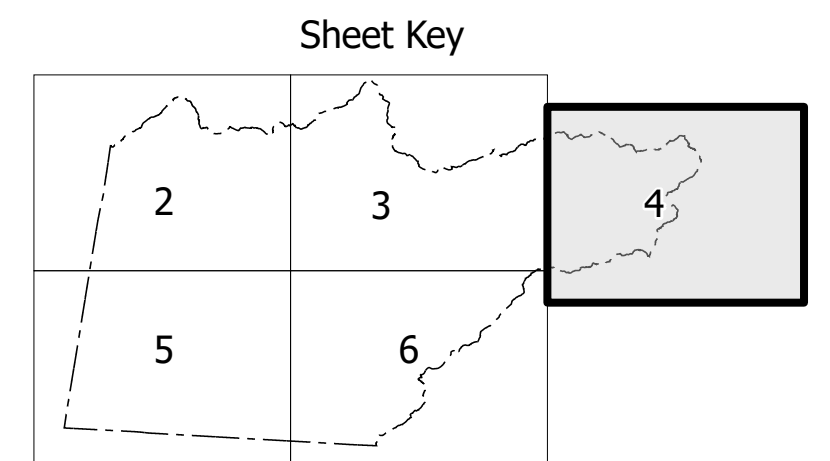
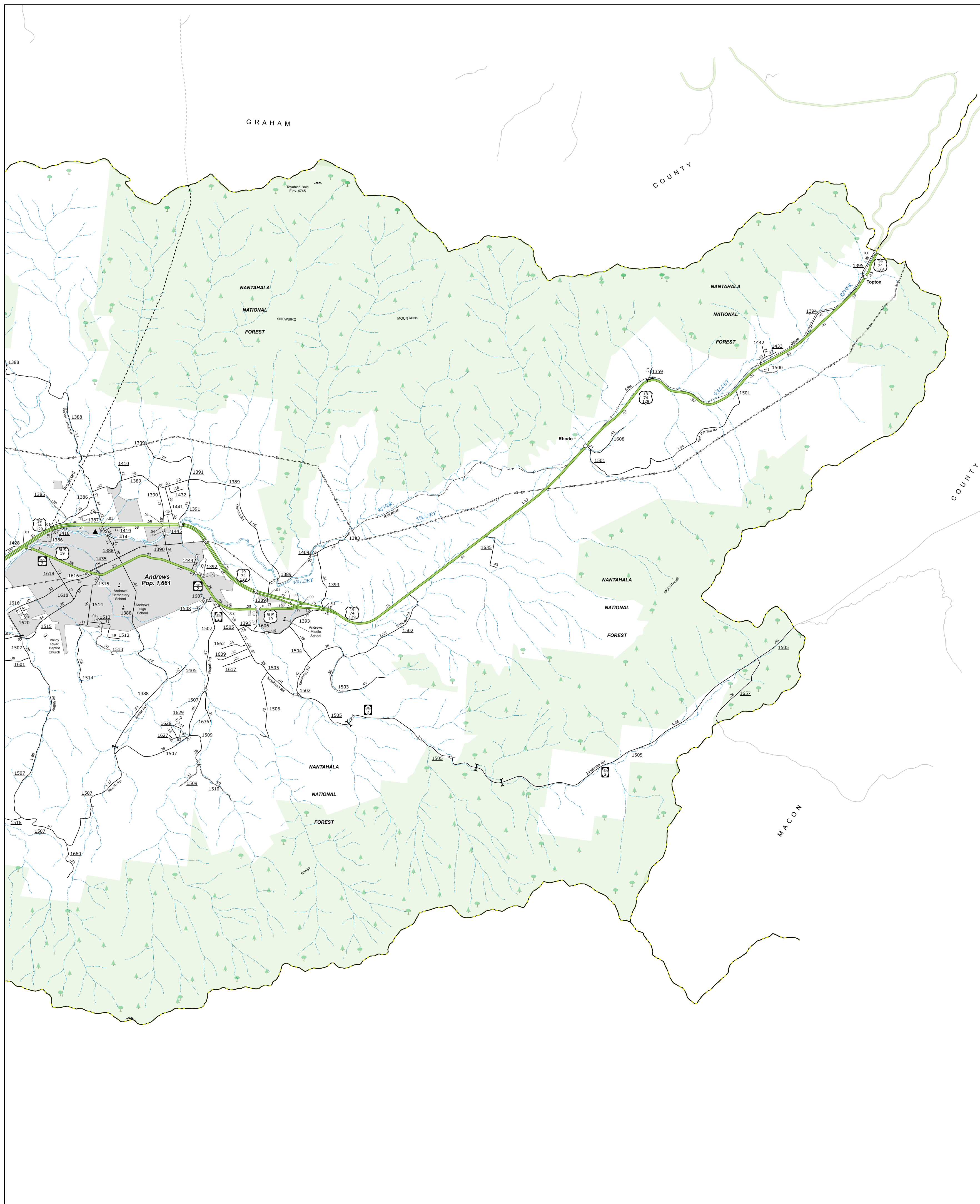


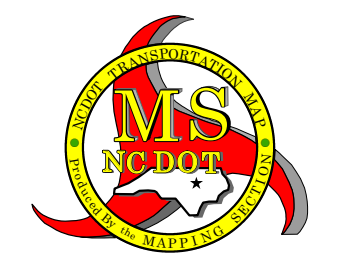
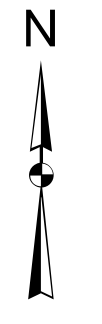
TERMS OF USE: The Mapping Section's goal is to provide the most accurate and current information possible. Map users should consult the most current sources with varying dates of publication and map accuracy standards. As a result, the accuracy, currency, and completeness of this information cannot be guaranteed. The information shown on this map was last updated in August 2024.

COPYIES OF THIS MAP ARE AVAILABLE TO THE PUBLIC AT NORMAL COST. CONTACT US TO ORDER: 252.733.4000 or 252.733.4001. Website: www.ncdot.gov/transportation/operations-program-management/infrastructure



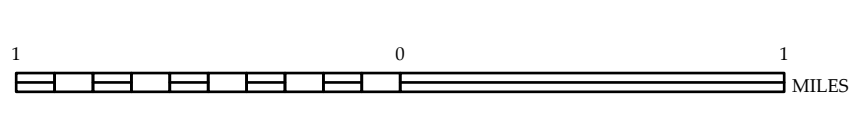
LEGEND

- INTERSTATE US NC
- INTERSTATE US NC
- Decided Hwy
- Undecided Hwy
- BLUE RIDGE PARKWAY
- UNPAVED SURFACED ROAD
- HARD SURFACED ROAD
- NON-SYSTEM ROAD
- PROPOSEDLY DRAIN ROAD
- PROPOSED LOCATION
- INTERSECTION BREAK
- STANDARD ROAD BRIDGE
- RAILROAD BRIDGE
- DRAW SPAN ON BRIDGE
- FOOTPATH BRIDGE
- FOOTPATH WALKWAY
- FOOTPATH UNDERPASS
- VEHICLE UNDERPASS
- TUNNEL
- UTILITY
- POLE
- INTERSTATE HIGHWAY
- U.S. NUMBERED HIGHWAY
- U.S. NUMBERED HIGHWAY
- U.S. NUMBERED BI-CYCLE ROUTE
- U.S. NUMBERED BI-CYCLE ROUTE
- INTERSTATE INTERCHANGE NUMBER
- SECONDARY ROAD NUMBER
- UTILITY LINES
- RAILROAD LINE
- RAILROAD STATION
- POST AREA
- STATE LINE
- COUNTY LINE
- CITY LIMITS
- FERRY ROUTE
- NARROW CREEK OR STREAM
- WIDE RIVER OR CREEK
- RESERVOIR, POND OR LAKE W/ ISLAND
- DAM OR DAM WITH LAKE
- WATERFALL
- SWAMP
- COMMUNITY, TOWN OR CITY CENTER
- COUNTY SEAT
- SCHOOL
- COLLEGE OR UNIVERSITY
- HOSPITAL
- COURT HOUSE
- CHURCH
- CHURCH WITH CEMETERY
- CEMETERY
- PARK STATION
- CORRECTION OR PENAL INSTITUTION
- QUARRY
- WATER OR PUMP
- HIGHWAY GARAGE OR MAINT. YARD
- HIGHWAY DIST. OR DIST. OFFICE
- MILITARY POST
- WEIGH STATION
- FARGO STATION
- HISTORICAL SITE
- POINT OF INTEREST
- STATE FOREST
- LIGHTHOUSE
- MOUNTAIN SUMMIT
- OVERLOOK
- REST AREA
- VISITOR CTR. REST AREA
- WELCOME CTR. REST AREA
- AIRPORT
- MILITARY AIRPORT
- HELIPORT
- NATIONAL STATE FOREST BOUNDARY
- WILDLIFE REFUGE
- NATIONAL STATE PARK BOUNDARY
- GAME LANDS BOUNDARY
- MILITARY RESERVATION BOUNDARY
- INDIAN RESERVATION BOUNDARY



**CHEROKEE COUNTY
NORTH CAROLINA**

PREPARED BY THE
NORTH CAROLINA DEPARTMENT OF TRANSPORTATION
OPERATIONS PROGRAM MANAGEMENT UNIT - MAPPING SECTION
IN COOPERATION WITH THE
U.S. DEPARTMENT OF TRANSPORTATION
FEDERAL HIGHWAY ADMINISTRATION



NORTH CAROLINA PLANE COORDINATE SYSTEM
LAMBERT CONFORMAL CONIC PROJECTION