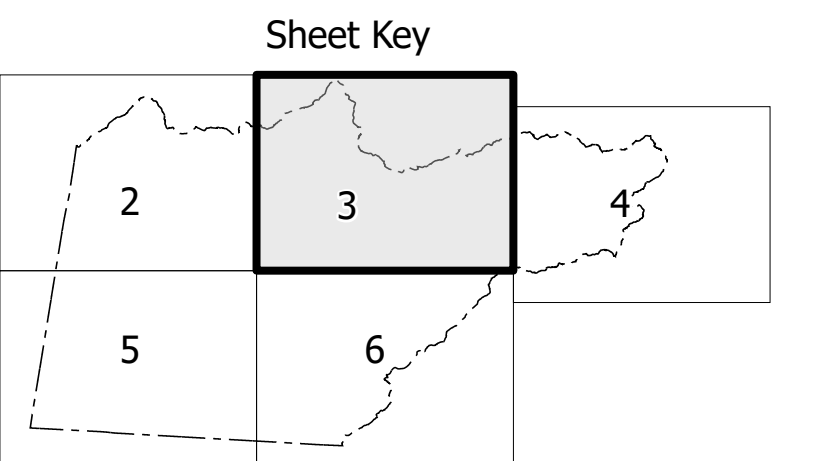
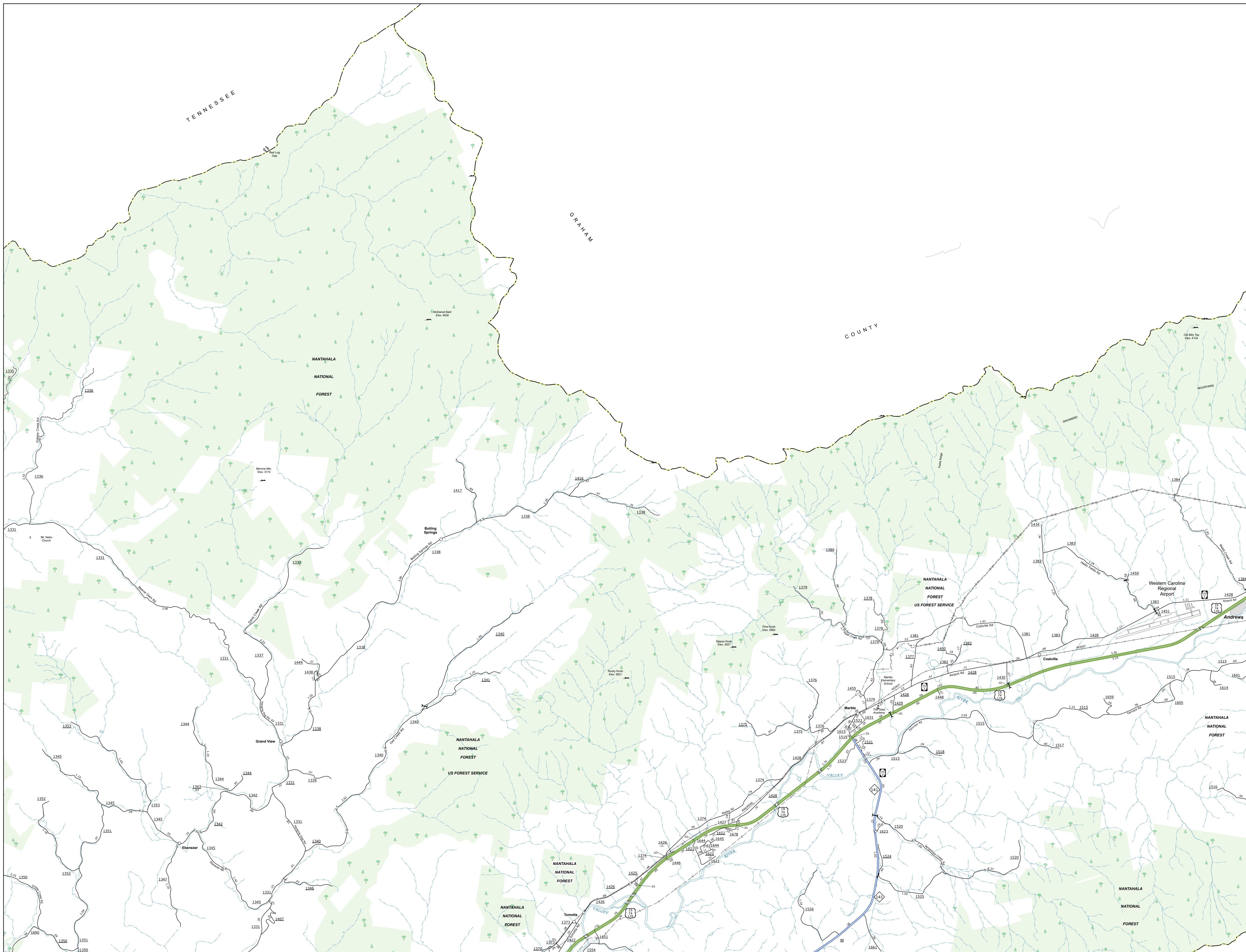


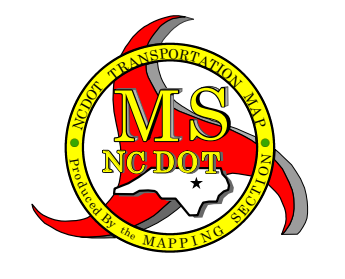
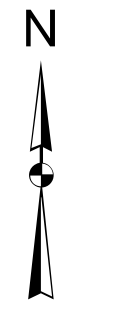
TERMS OF USE: The Mapping Section's goal is to provide the most accurate and current information possible. Map data is compiled from numerous sources with varying dates of publication and map accuracy standards. As a result, the accuracy, currency, and completeness of this information cannot be guaranteed. The information shown on this map was last updated in April 2024.

COPIES OF THIS MAP ARE AVAILABLE TO THE PUBLIC AT NORMAL COST. CONTACT US TO ORDER: 704.333.3333 OR WWW.NCDEPARTMENTOFTRANSPORTATION.COM



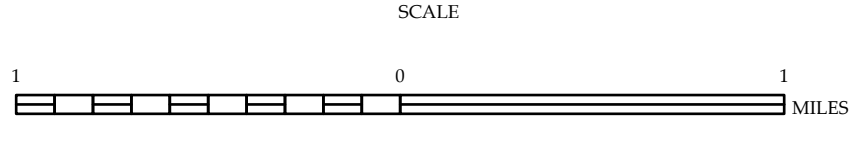
LEGEND

- INTERSTATE US
- INTERSTATE NC
- Blue Ridge Parkway
- Unimproved Hwy
- CONCRETE PAVED ROAD
- HARD SURFACED ROAD
- NON-SYSTEM ROAD
- PROVISIONALLY DRAWN ROAD
- PROPOSED LOCATION
- INTERSECTION OVERPASS
- STANDARD ROAD BRIDGE
- RAILROAD BRIDGE
- DRAW SPAN ON BRIDGE
- PIEDMONT WALKWAY
- PIEDMONT UNDERPASS
- TRUCK LANE UNDERPASS
- TUNNEL
- RAILROAD
- INTERSTATE HIGHWAY
- U.S. NUMBERED HIGHWAY
- N.C. NUMBERED HIGHWAY
- N.C. NUMBERED BI-CYCLE ROUTE
- INTERSTATE INTERCHANGE NUMBER
- SECONDARY ROAD NUMBER
- UTILITY LINES
- RAILROAD LINE
- RAILROAD STATION
- POST AREA
- STATE LINE
- COUNTY LINE
- CITY LIMITS
- FERRY ROUTE
- NARROW CREEK OR STREAM
- WIDE RIVER OR CREEK
- RESERVOIR, POND OR LAKE W/ ISLAND
- DAM OR DAM WITH LAKE
- WATERFALL
- SWAMP
- COMMUNITY, TOWN OR CITY CENTER
- COUNTY SEAT
- SCHOOL
- COLLEGE OR UNIVERSITY
- HOSPITAL
- COURT HOUSE STATION
- CHURCH
- CHURCH WITH CEMETERY
- CEMETERY
- PARK STATION
- CORRECTION OR PENAL INSTITUTION
- QUARRY
- STREET LIGHT
- HIGHWAY GARAGE OR MAINT. YARD
- HIGHWAY DIST. OR DIST. OFFICE
- MILITARY POST
- WATER STATION
- FARGO STATION
- HISTORICAL SITE
- POINT OF INTEREST
- STATE FOREST
- SOUTH FORK
- MOUNTAIN SUMMIT
- OVERLOOK
- REST AREA
- VISITOR OR REST AREA
- WILDCAM OR REST AREA
- AIRPORT
- MILITARY AIRPORT
- FIELD POINT
- NANTAHALA NATIONAL FOREST BOUNDARY
- WILDLIFE REFUGE
- NANTAHALA NATIONAL FOREST BOUNDARY
- GAME LANDS BOUNDARY
- MILITARY RESERVATION BOUNDARY
- INDIAN RESERVATION BOUNDARY



CHEROKEE COUNTY  
NORTH CAROLINA

PREPARED BY THE  
NORTH CAROLINA DEPARTMENT OF TRANSPORTATION  
OPERATIONS PROGRAM MANAGEMENT UNIT - MAPPING SECTION  
IN COOPERATION WITH THE  
U.S. DEPARTMENT OF TRANSPORTATION  
FEDERAL HIGHWAY ADMINISTRATION



NORTH CAROLINA PLANE COORDINATE SYSTEM  
LAMBERT CONFORMAL CONIC PROJECTION