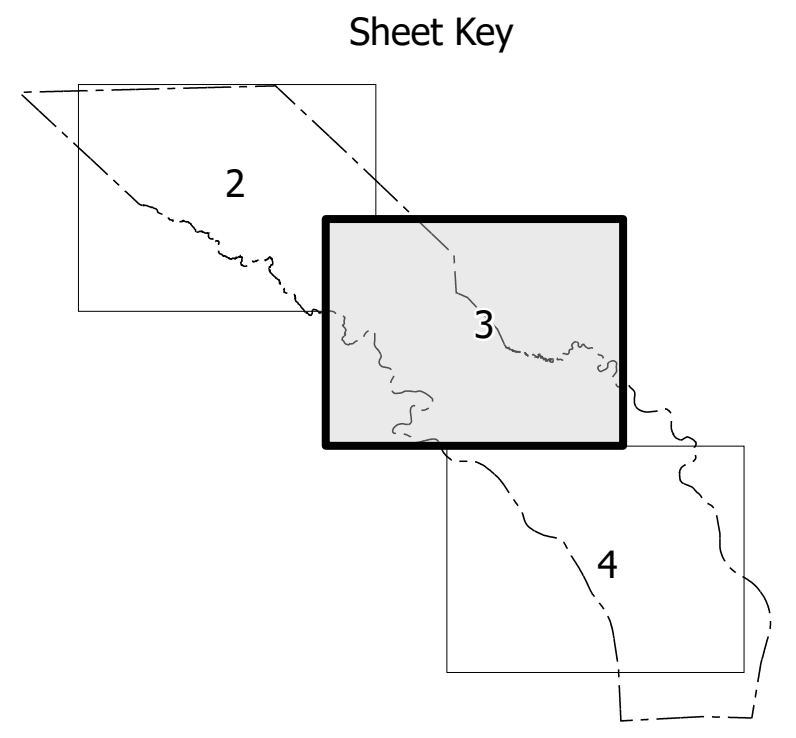
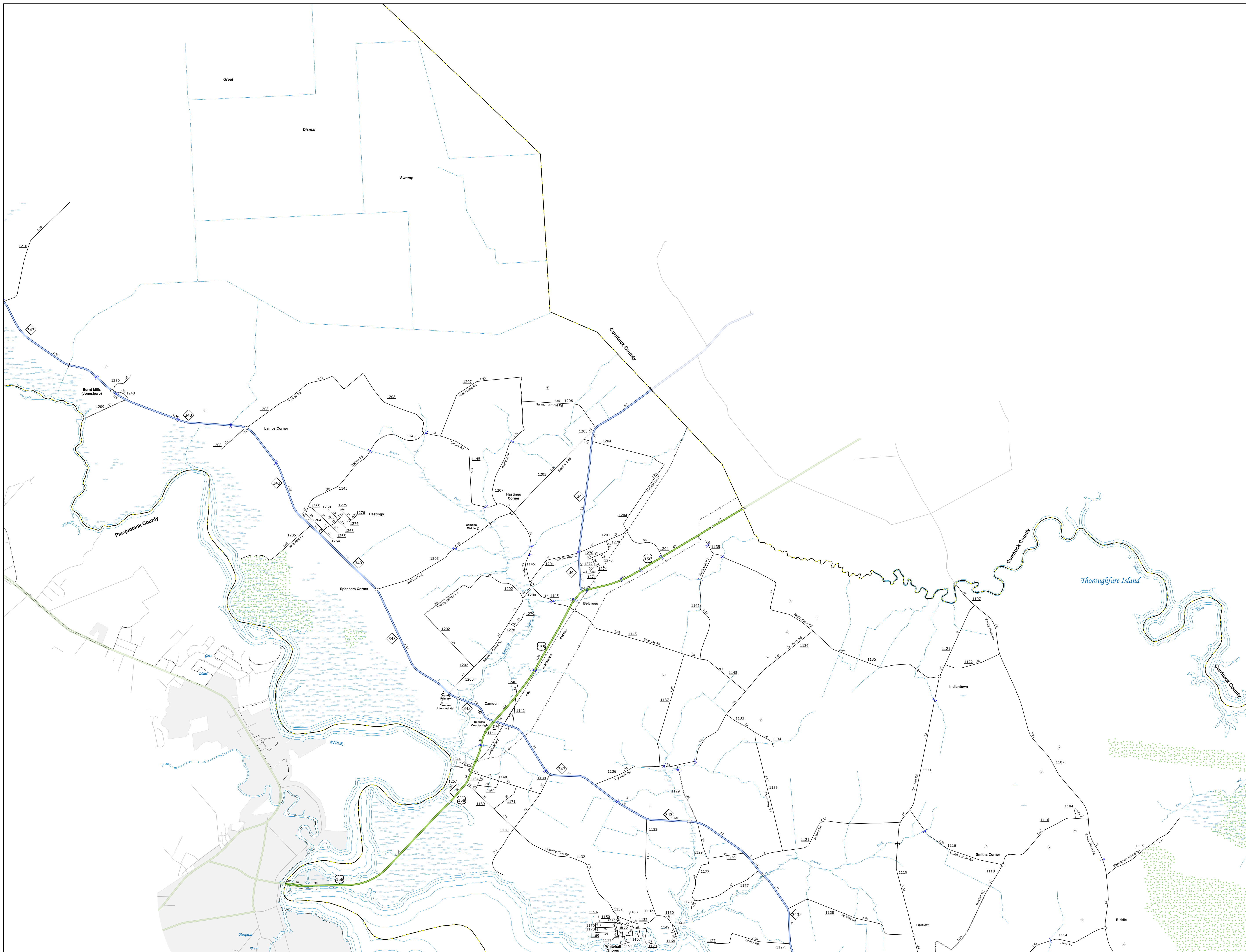
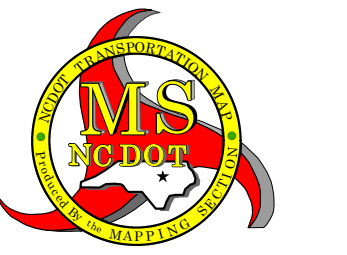
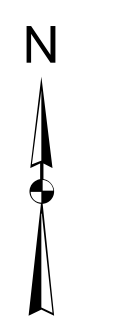


TERMS OF USE: The Mapping Section's goal is to provide the most accurate and current information possible. Any data is collected from numerous sources with varying degrees of accuracy. As a result, the accuracy, reliability, and completeness of these data cannot be guaranteed. The information shown on this map was last updated in 2024.  
 For digital copies of this map or additional information, visit <https://www.ncdot.gov/transportation/planning-and-policy/transportation-planning-and-policy.aspx>.

COPIES OF THIS MAP ARE AVAILABLE TO THE PUBLIC AT THE FOLLOWING URL:  
<https://www.ncdot.gov/transportation/planning-and-policy/transportation-planning-and-policy.aspx>

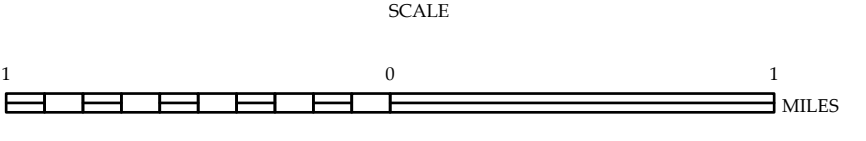


- ### LEGEND
- INTERSTATE US NC
  - Divided Hwy
  - Undivided Hwy
  - BLUES RIDGE PARKWAY
  - UNPAVED SURFACED ROAD
  - HARD SURFACED ROAD
  - SUBDIVISION ROAD
  - PROVISIONALLY DRAINED ROAD
  - PROTECTED LOCKS
  - INTERSECTION DISTANCE
  - STANDARD ROAD BRIDGE
  - RAILROAD BRIDGE
  - IRON SPAN ON BRIDGE
  - PEDERIAN BRIDGE
  - PEDERIAN WALKWAY
  - PEDERIAN UNDERPASS
  - VEHICULAR UNDERPASS
  - TUNNEL
  - CANYON
  - PIH
  - INTERSTATE HIGHWAY
  - U.S. NUMBERED HIGHWAY
  - N.C. NUMBERED HIGHWAY
  - U.S. NUMBERED BI-CYCLE ROUTE
  - N.C. NUMBERED BI-CYCLE ROUTE
  - INTERSTATE INTERCHANGE NUMBER
  - SECONDARY ROAD NUMBER
  - ROADWAY TYPE
  - THRUWAY
  - RAILROAD LINE
  - RAILROAD STATION
  - RAILROAD
  - STATE LINE
  - COUNTY LINE
  - UNINCORPORATED URBAN BOUNDARIES
  - CITY BOUNDARY
  - TERRACE ROAD RAMP
  - NARROW CREEK OR STREAM
  - WIDE RIVER OR CREEK
  - RESERVOIR, POND OR LAKE W/ ISLAND
  - DAM OR DAM WITH LOCK
  - WATERFALL
  - SWAMP
  - COMBINATION
  - CONVENT
  - SCHOOL
  - COLLEGE OR UNIVERSITY
  - HOSPITAL
  - STATE HEAD-QUARTERS
  - CITY
  - CITY WITH CEMETERY
  - CITY
  - CORRECTION OR PENAL INSTITUTION
  - QUARRY
  - SEWAGE TREATMENT PLANT
  - BIOPHYSICAL RESERVE
  - WEIR
  - RAILROAD
  - HISTORICAL SITE
  - POINT OF INTEREST
  - STATE FOREST
  - FOREST
  - SOUTHERN STATE
  - MONUMENT
  - OVERLOOK
  - BEST AREA
  - WATER CONTROL AREA
  - WILDLIFE REFUGES
  - WILDLIFE REFUGE
  - NATIONAL / STATE PARK BOUNDARY
  - NATIONAL / STATE PARK BOUNDARY
  - GAME LANDS BOUNDARY
  - MILITARY RESERVATION BOUNDARY
  - INDIAN RESERVATION BOUNDARY



## CAMDEN COUNTY NORTH CAROLINA

PREPARED BY THE  
 NORTH CAROLINA DEPARTMENT OF TRANSPORTATION  
 OPERATIONS PROGRAM MANAGEMENT UNIT - MAPPING SECTION  
 IN COOPERATION WITH THE  
 U.S. DEPARTMENT OF TRANSPORTATION  
 FEDERAL HIGHWAY ADMINISTRATION



NORTH CAROLINA PLANE COORDINATE SYSTEM  
 LAMBERT CONFORMAL CONIC PROJECTION