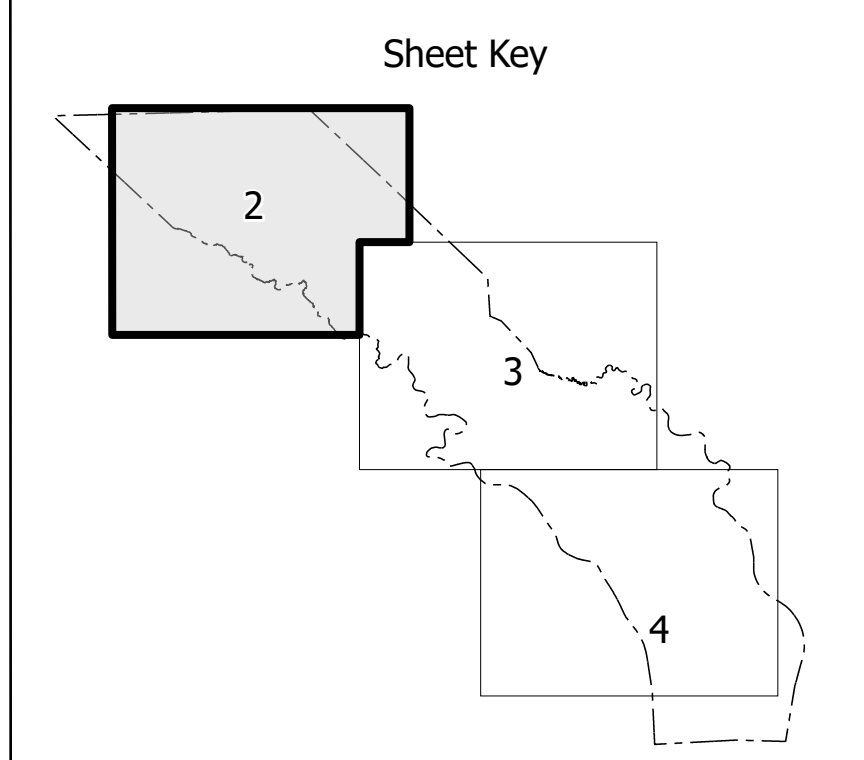
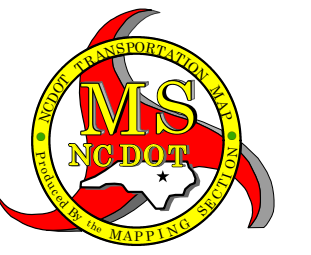
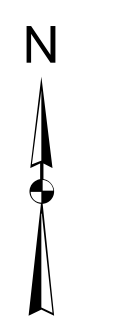


TERMS OF USE: The Mapper's Bureau seeks to provide the most accurate and current information possible. Map data is collected from numerous sources with varying degrees of jurisdiction and map accuracy. As a result, the accuracy, currency and completeness of information cannot be guaranteed by the Mapper's Bureau. The information shown on this map was last updated in July 2024. For digital copies of this map, visit <https://www.ncdot.gov/Mapping/Products/InteractiveMaps.aspx>.

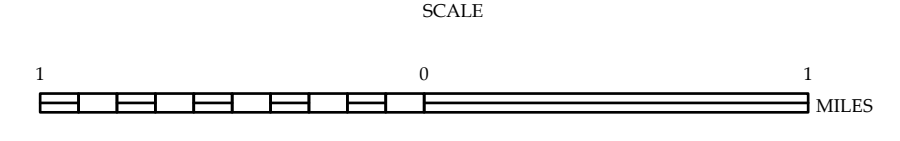


- LEGEND**
- Interstate US NC
 - Divided Hwy
 - Undivided Hwy
 - Blue Ridge Parkway
 - - - Unimproved Road
 - - - Hard Surface Road
 - - - Non-Surfaced Road
 - - - Privately Maintained Road
 - - - Projected Road
 - - - Intersection Distance
 - - - Standard Road Bridge
 - - - Railroad Bridge
 - - - Beam Span On Bridge
 - - - Pier Span Bridge
 - - - Pedestrian Walkway
 - - - Pedestrian Underpass
 - - - Vehicle Underpass
 - - - Tunnel
 - - - Culvert
 - - - POB
 - - - Interstate Highway
 - - - U.S. Numbered Highway
 - - - N.C. Numbered Highway
 - - - U.S. Numbered Bicycle Route
 - - - N.C. Numbered Bicycle Route
 - - - Interstate Reference Number
 - - - Secondary Road Number
 - - - 8888
 - - - Trolley Line
 - - - Railroad Line
 - - - Railroad Station
 - - - State Line
 - - - County Line
 - - - Subdivided Urban Boundaries
 - - - City Limits
 - - - Ferry Route and Ramp
 - - - Narrow Creek or Stream
 - - - Side Stream or Ditch
 - - - Reservoir, Pond or Lake with Island
 - - - Dam or Dam with Lock
 - - - Watershed
 - - - Swamp
 - - - Community
 - - - County Seat
 - - - School
 - - - College or University
 - - - Hospital
 - - - State Road Station
 - - - Fire Station
 - - - Fire Station with Cemetery
 - - - Cemetery
 - - - Park Station
 - - - Correctional or Penal Institution
 - - - Quarry
 - - - Mine or Pit
 - - - Highway Exit or On-Ramp
 - - - Military Post
 - - - Weather Station
 - - - Radar Station
 - - - Historical Site
 - - - Point of Interest
 - - - Post Office
 - - - State Forest
 - - - Log Home
 - - - Mountain Summit
 - - - Mountain Camp
 - - - Overlook
 - - - Rest Area
 - - - Visitor Center Area
 - - - Wheel Chair Rest Area
 - - - Airport
 - - - Military Airport
 - - - National / State Forest Boundary
 - - - Wildlife Refuge
 - - - National / State Park Boundary
 - - - Game Lands Boundary
 - - - Military Reservation Boundary
 - - - Indian Reservation Boundary



**CAMDEN COUNTY
NORTH CAROLINA**

PREPARED BY THE
NORTH CAROLINA DEPARTMENT OF TRANSPORTATION
OPERATIONS PROGRAM MANAGEMENT UNIT - MAPPING SECTION
IN COOPERATION WITH THE
U.S. DEPARTMENT OF TRANSPORTATION
FEDERAL HIGHWAY ADMINISTRATION



NORTH CAROLINA PLANE COORDINATE SYSTEM
LAMBERT CONFORMAL CONIC PROJECTION