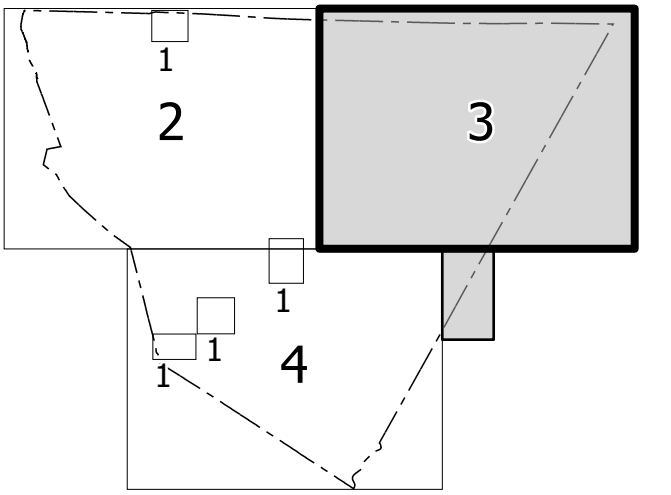


ROWAN

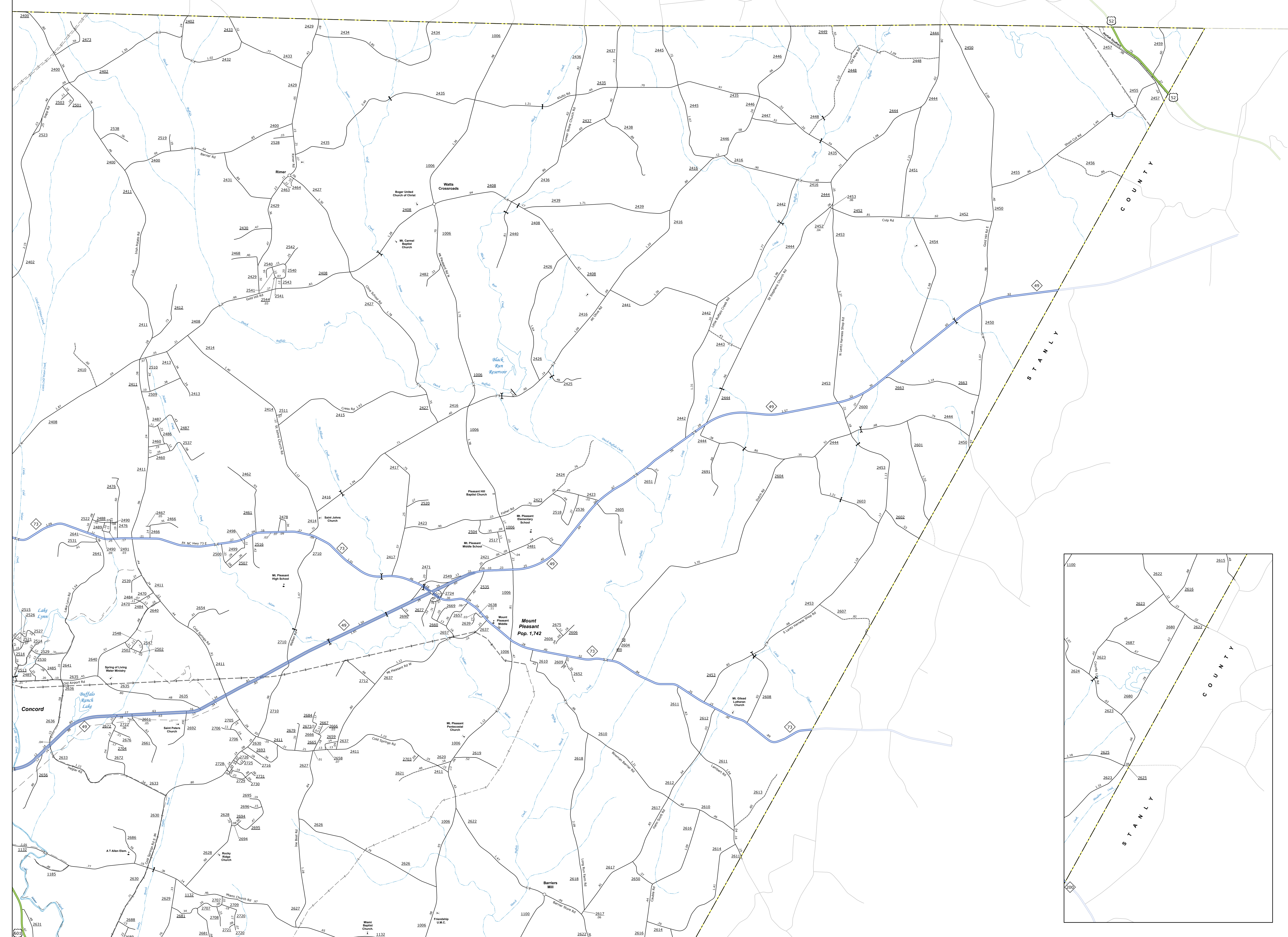
COUNTY

Sheet Key



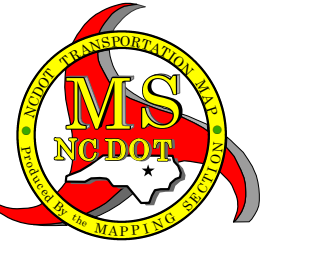
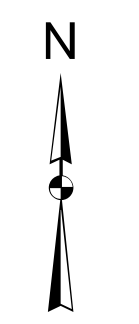
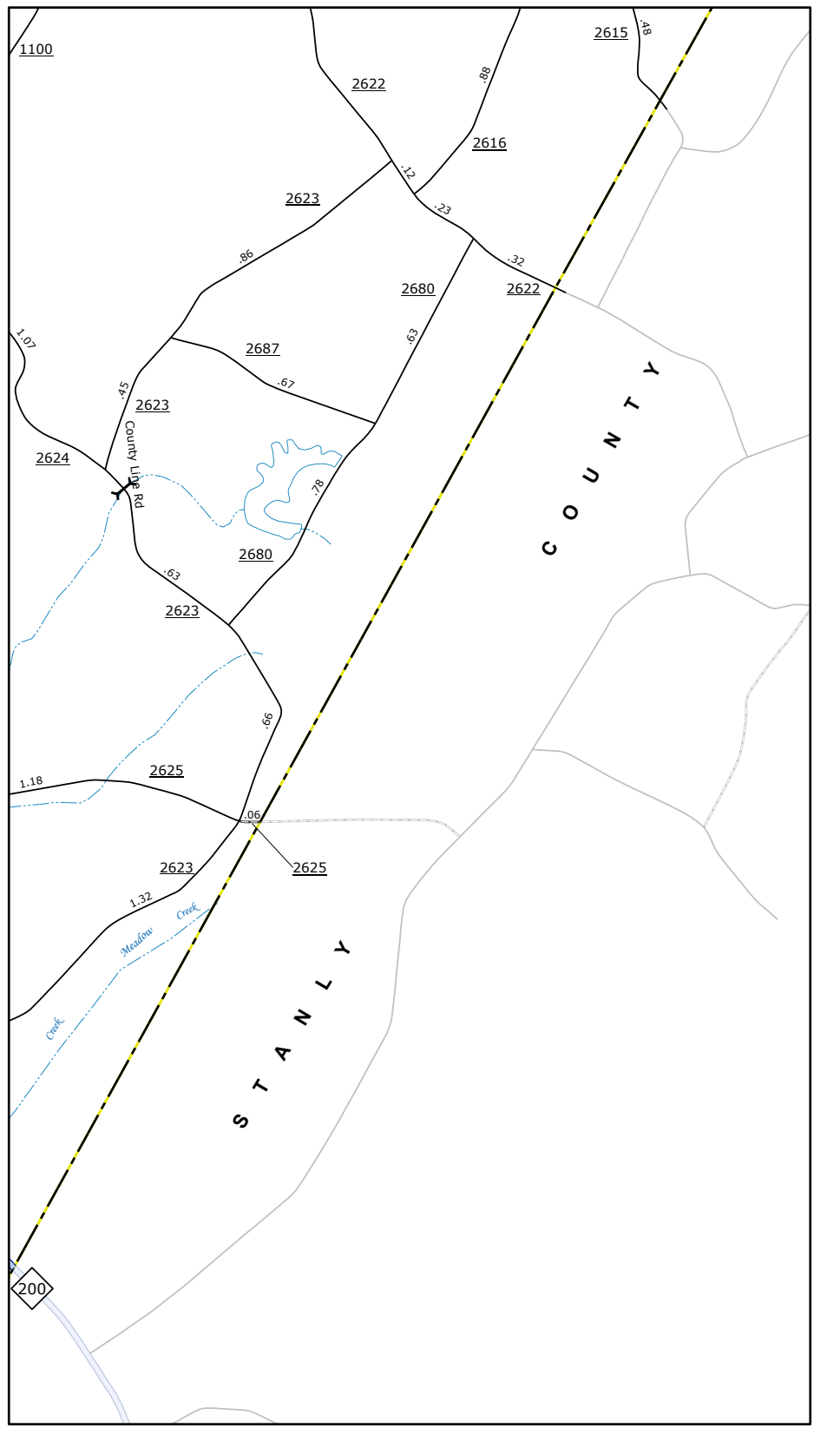
THIS IS A PRELIMINARY MAP. It is intended to provide a general overview of the project area. The information shown on this map is for informational purposes only. The information shown on this map is for informational purposes only. The information shown on this map is for informational purposes only.

CONCORD, NC



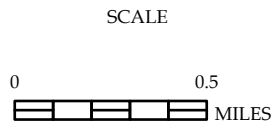
LEGEND

- INTERSTATE US
- US
- NC
- Divided Hwy
- Undivided Hwy
- HIGHWAY PARKWAY
- UNPAVED SHOULDER ROAD
- HARD SHOULDERS ROAD
- PROPOSED SHOULDER ROAD
- PROPOSEDLY DRAINED ROAD
- PREDICTED OPEN ADJAC
- INTERSECTION
- STANDARD ROAD BRIDGE
- RAILROAD BRIDGE
- DRAW SPAN OR BRIDGE
- PIEDMONT BRIDGE
- PIEDMONT WALKWAY
- PIEDMONT UNDERPASS
- VEHICLE CLEARANCE
- TUNNEL
- VIADUCT
- PIV
- INTERSTATE HIGHWAY
- US NUMBERED HIGHWAY
- NC NUMBERED HIGHWAY
- US NUMBERED BI-CYCLE ROUTE
- NC NUMBERED BI-CYCLE ROUTE
- INTERSTATE INTERCHANGE NUMBER
- SECONDARY ROAD NUMBER
- UTILITY LINE
- RAILROAD LINE
- RAILROAD STATION
- POST OFFICE
- SHEET LINE
- COUNTY LINE
- SMOOTHED URBAN BOUNDARIES
- CITY LINE
- FERRY ROUTE AND RAMP
- SHADOW CREEK OR STREAM
- WIDE RIVER OR CREEK
- RESERVOIR, POND OR LAKE W/ ISLAND
- DAM OR DAM WITH LOCK
- WATERFALL
- SWAMP
- COMMUNITY
- COUNTY SEAT
- SCHOOL
- COLLEGE OR UNIVERSITY
- HOSPITAL
- COAST GUARD STATION
- CHURCH
- CEMETERY WITH CEMETERY
- CEMETERY
- PARK STATION
- COOPERATION OR PENAL INSTITUTION
- QUARRY
- MINE OR PIT
- INDUSTRIAL GARAGE OR SALES YARD
- HIGHWAY DIV. OR DIST. OFFICE
- MILEAGE POST
- VIADUCT
- FERRIS WHEEL
- HISTORICAL SITE
- POINTS OF INTEREST
- POST OFFICE
- STATE FOREST
- LIGHTHOUSE
- MOUNTAIN SUMMIT
- MOUNTAIN GAP
- OVERLOOK
- REST AREA
- VISITOR CENTER AREA
- WELCOME CENTER AREA
- AMPHITHEATRE
- MILITARY AIRPORT
- NATIONAL STATE FOREST BOUNDARY
- WILDLIFE REFUGE
- NATIONAL STATE PARK BOUNDARY
- GAME LANDS BOUNDARY
- MILITARY RESERVATION BOUNDARY
- INDIAN RESERVATION BOUNDARY



CABARRUS COUNTY NORTH CAROLINA

PREPARED BY THE NORTH CAROLINA DEPARTMENT OF TRANSPORTATION OPERATIONS PROGRAM MANAGEMENT UNIT - MAPPING SECTION IN COOPERATION WITH THE U.S. DEPARTMENT OF TRANSPORTATION FEDERAL HIGHWAY ADMINISTRATION



NORTH CAROLINA PLANE COORDINATE SYSTEM LAMBERT CONFORMAL CONIC PROJECTION