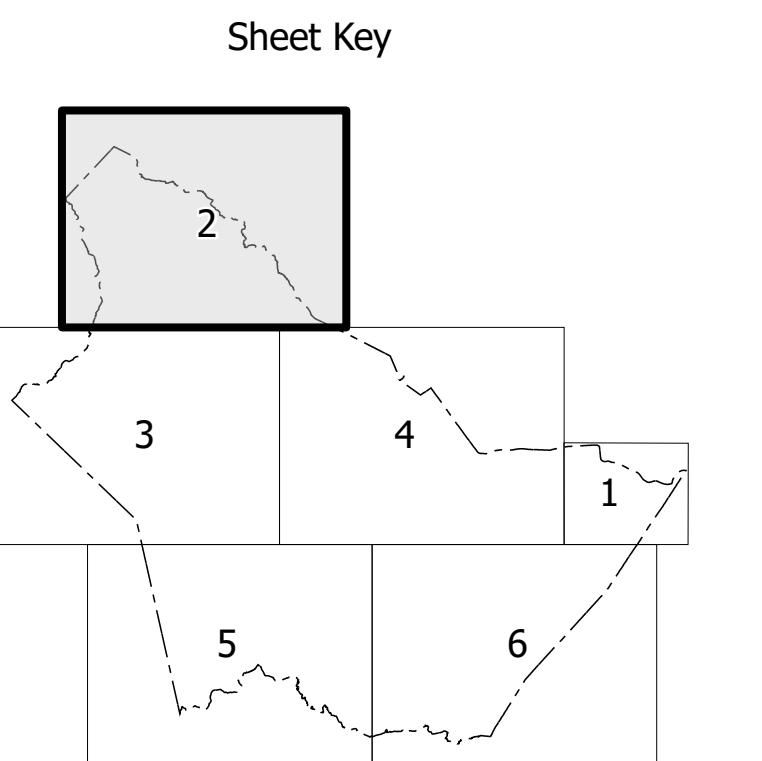
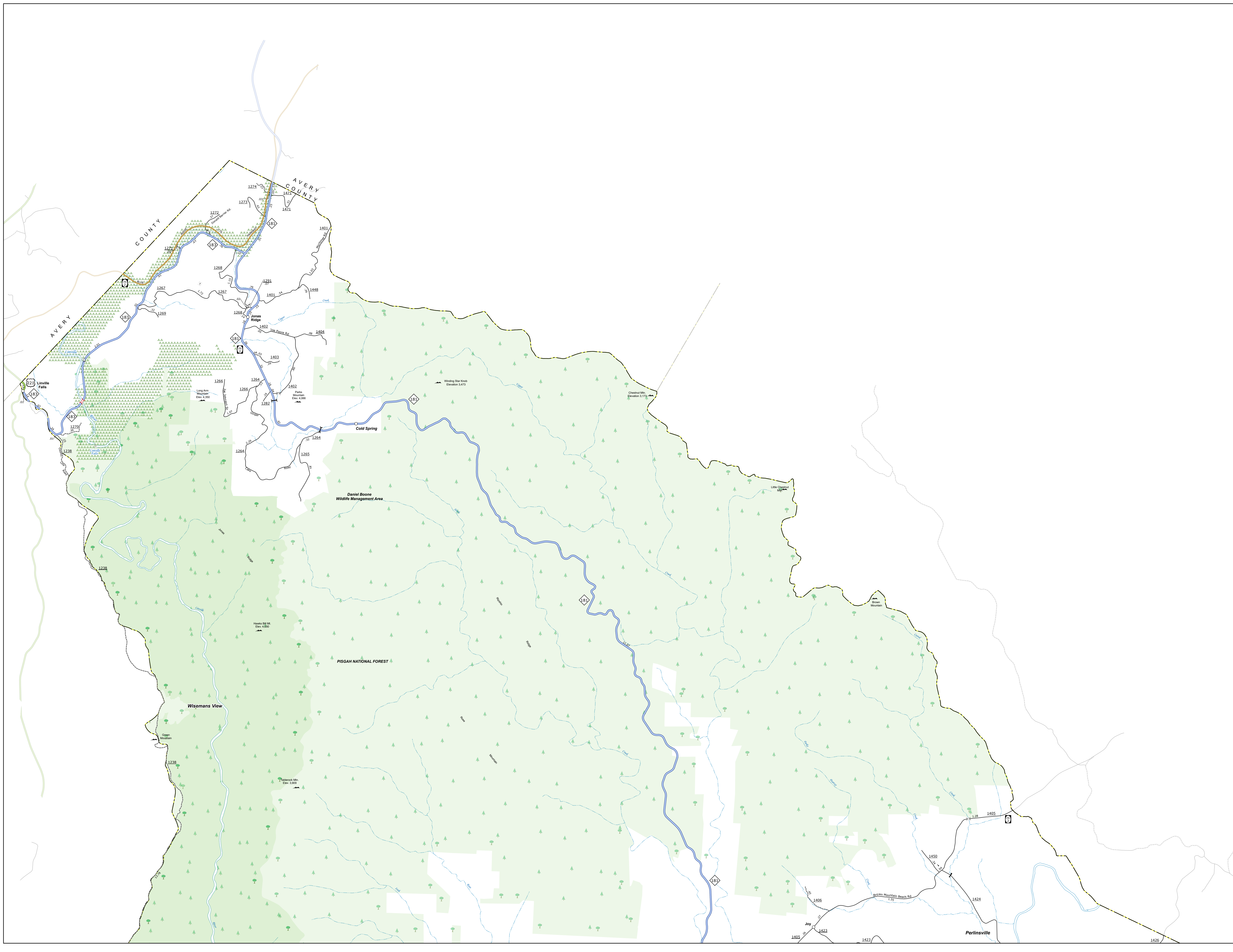


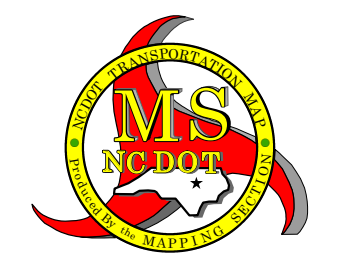
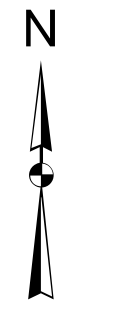
TERMS OF USE: The Mapping Section shall provide the most accurate and current information possible. Map data is compiled from various sources including aerial photography, ground surveys, and other available information. The user assumes all responsibility for any errors or omissions. This map is provided as a guide only and should not be used for legal or financial purposes. The information shown on this map was last updated on 4/1/2024. Copyright © 2024 by the State of North Carolina. All rights reserved.

COPIES OF THIS MAP ARE AVAILABLE TO THE PUBLIC AT NO CHARGE. CONTACT US TO ORDER: maps@ncdot.gov or call 1-800-388-3353.



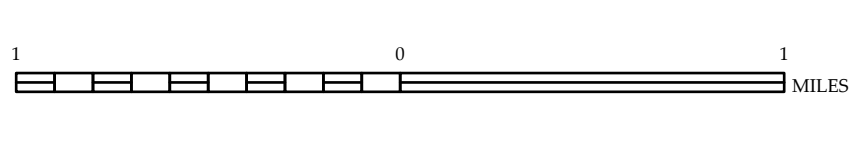
LEGEND

- INTERSTATE I-85
- INTERSTATE I-77
- INTERSTATE I-40
- STATE HIGHWAY
- UNPAVED SURFACE ROAD
- RAILROAD
- PROFESSIONALLY GRADED ROAD
- PROJECTED ROAD
- INTERSECTION DISTANCE
- STANDARD ROAD BRIDGE
- RAILROAD BRIDGE
- RAILROAD SWAY BRIDGE
- PRELIMINARY BRIDGE
- PEDESTRIAN WALKWAY
- VEHICULAR UNDERPASS
- VEHICULAR UNDERPASS
- TUNNEL
- PIPE
- PIPE
- INTERSTATE HIGHWAY
- U.S. NUMBERED HIGHWAY
- N.C. NUMBERED HIGHWAY
- U.S. NUMBERED BI-CYCLE ROUTE
- N.C. NUMBERED BI-CYCLE ROUTE
- INTERSTATE INTERCHANGE NUMBER
- SECONDARY ROAD NUMBER
- TRAILHEAD
- RAILROAD LINE
- RAILROAD STATION
- POST AREA
- STATE LINE
- COUNTY LINE
- SMOOTHED URBAN BOUNDARIES
- CITY BIRTH
- FERRY ROUTE AND RAMP
- NARROW CREEK OR STREAM
- WIDE RIVER OR CREEK
- RESERVOIR, POND OR LAKE W/ ISLAND
- DAM OR DAM WITH LOCK
- WATERFALL
- SWAMP
- COMMUNITY
- COUNTY SEAT
- SCHOOL
- COLLEGE OR UNIVERSITY
- HOSPITAL
- COURT HOUSE
- CHURCH
- CHURCH WITH CEMETERY
- CEMETERY
- PASTOR STATION
- CORRECTIONAL INSTITUTION
- QUARRY
- MISSILE SITE
- HIGHWAY GARAGE OR MAINT. YARD
- HIGHWAY DOC. OR DIST. OFFICE
- MILEPOST
- WEIGH STATION
- FARGO STATION
- HISTORICAL SITE
- WORTHY OF INTEREST
- POST OFFICE
- STATE FOREST
- LIGHTHOUSE
- MOUNTAIN SUMMIT
- MOUNTAIN GAP
- OVERLOOK
- REST AREA
- VISITOR CENTER AREA
- WELCOME CENTER AREA
- AIRPORT
- MILITARY AIRPORT
- NATIONAL STATE FOREST BOUNDARY
- WILDLIFE REFUGE
- NATIONAL STATE PARK BOUNDARY
- NATIONAL STATE PARK BOUNDARY
- GAME LANDS BOUNDARY
- MILITARY RESERVATION BOUNDARY
- INDIAN RESERVATION BOUNDARY



**BURKE COUNTY
NORTH CAROLINA**

PREPARED BY THE
NORTH CAROLINA DEPARTMENT OF TRANSPORTATION
OPERATIONS PROGRAM MANAGEMENT UNIT - MAPPING SECTION
IN COOPERATION WITH THE
U.S. DEPARTMENT OF TRANSPORTATION
FEDERAL HIGHWAY ADMINISTRATION



NORTH CAROLINA PLANE COORDINATE SYSTEM
LAMBERT CONFORMAL CONIC PROJECTION